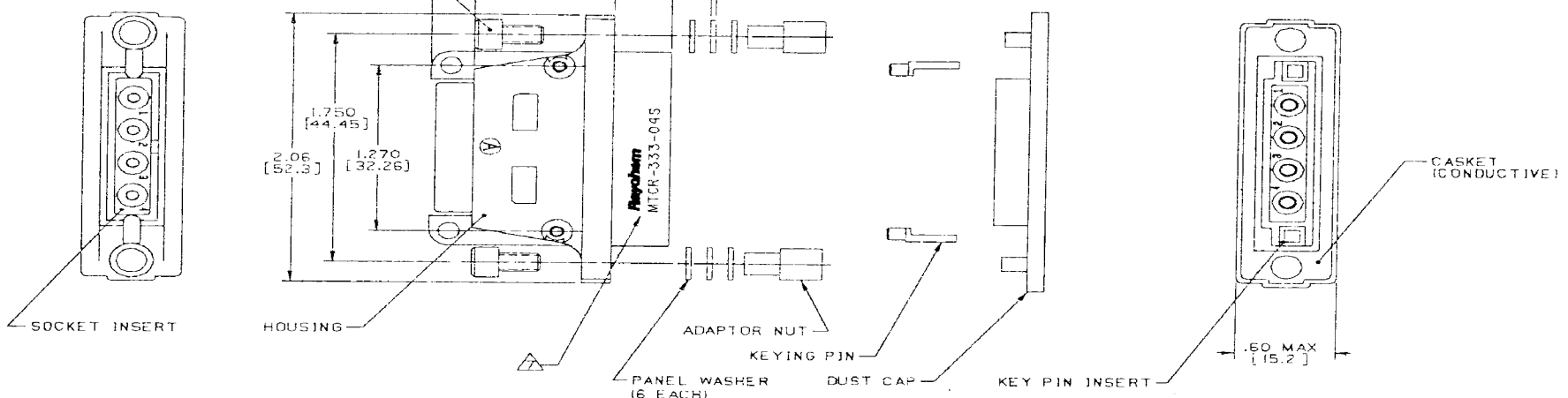


ADAPTOR SCREW
SOCKET HEAD
SELF LOCKING
17/64 ALLEN WRENCH)



REVISIONS			
LTR	DESCRIPTION	DATE	APPROVED
A	Revised Per ECNT-18229	6-1-93	[Signature]
B	REVISED PER DCR# T-22913	6/8/99	M.Higgy

NOTES:

- THIS PART IS DESIGNED TO MEET THE REQUIREMENTS OF RAYCHEM SPECIFICATION C-6115. QUALIFICATION IS PENDING.
- MATERIALS ARE IN ACCORDANCE WITH RAYCHEM SPECIFICATION C-6115.
- FINISH: FINISHES ARE IN ACCORDANCE WITH RAYCHEM SPECIFICATION C-6115.
- FOR MOUNTING / MATING AND KEYING INFORMATION, SEE RAYCHEM DRAWING D652-0012
- THE FOLLOWING MOUNTING AND MATING HARDWARE IS SUPPLIED NOT INSTALLED WITH EACH RECEPTACLE:
A) (2) KEYING PINS
B) (2) ADAPTOR SCREWS
C) (2) ADAPTOR NUTS
D) (16) PANEL WASHERS
- DUST CAP SUPPLIED INSTALLED WITH EACH RECEPTACLE
- RAYCHEM, PART NO. MTCR-333-045, AND DATE CODE ARE STAMPED APPROXIMATELY AS SHOWN.
- CONNECTOR ACCOMODATES CONTACTS PER TABLE 1.
- INSERT IS PERMANENTLY INSTALLED.
- CONTACTS ARE INSERTED AND REMOVED USING TOOL NUMBER M81969/14-04.
- UNUSED CAVITIES ARE TO BE SEALED USING SEALING PLUG NUMBER MS27488-12.
- TOLERANCES: UNLESS OTHERWISE SPECIFIED
.XXX ± .005 [±.13]
.XX ± .02 [±.5]
- WEIGHT: .066 Lbs [29.96 Grams] MAXIMUM.
- REPLACEMENT MOUNTING HARDWARE IS SHOWN ON CHA-0051-003.

SOCKET CONTACT AND TOOLING INFORMATION

CONTACT TYPE	MILITARY PART NO.	WIRE STRIP LENGTH	TERMINATION TOOL
SHIELDED CONTACT FOR COAX CABLE D-602-0107 OR D-602-0095		SEE DRAWING D-602-0107 OR D-602-0095	SEE DRAWING D-602-0107 OR D-602-0095
CONTACT FOR TWISTED PAIR D-602-0105		SEE DRAWING D-602-0105	SEE DRAWING D-602-0105
POWER CONTACT SIZE 12	M39029/5-12-12	1/4" TO 5/16"	M22520/1-01 POSITIONER M22520/1-02

- UNLESS OTHERWISE SPECIFIED DIMENSIONS ARE IN INCHES. METRIC DIMENSIONS ARE IN PARENTHESES
- WEIGHT: .066 Lbs [29.96 Grams] MAXIMUM.

If this document is printed it becomes uncontrolled.
Check with the web for latest revision.

CAD: T22913.TIF
CONTRACT NO
F32657-81-C-0067

DRAWN	D.J.K	11-24-86
CHECKED	[Signature]	
APPROVED	[Signature]	11-25-86
APPROVED	[Signature]	12-4-86

Raychem RAYCHEM CORPORATION
300 CONSTITUTION DRIVE
MENLO PARK, CALIFORNIA 94025

CONNECTOR, RECEPTACLE, FLANGED, 1"
CADMIUM PLATED, FIXED SOCKET, INSERT
EME CLASS, MTC SERIES

SIZE	CODE IDENT. NO.	DWG. NO.	
A	06090	MTCR-333-045	B
DO NOT SCALE THIS DRAWING		WEIGHT	SHEET 1 OF 1