

PSR – Phoenix Safety Relay PSR-URM/2X21

- Universal safety relay
- Safe isolation (input/output)
- Housing width 17.5 mm (0.689in.)
- DPDT contacts

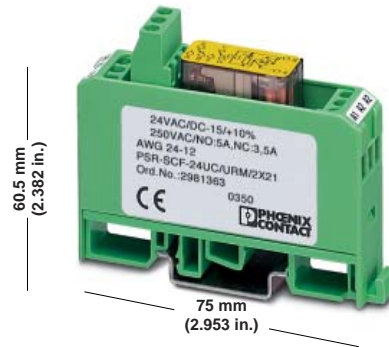
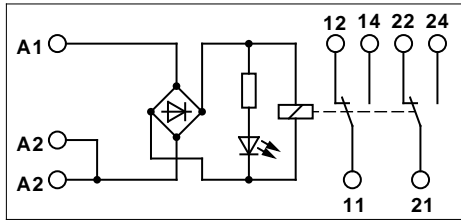
1. Short Description

The PSR-SCF-...UC/URM/2X21 safety relay is a universal safety relay with positively driven contacts according to EN 50 205 Class A.

The relay has DPDT contacts with positive drive. If an opening failure occurs at the Form A contact when operating DPDT contacts, the other Form A contact opens when changing to the idle position and the Form B contact remains open.



2. Technical Data



PSR-URM/2X21

with positively driven contacts
according to EN 50 205 application type A

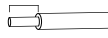
Housing width 17.5 mm (0.689 in.)

listed applied for



M 3

7/10 mm
(0.28/0.39 in.)



	Solid	Flexible	
	[mm ²]		AWG

Connection data: 0.2 - 2.5 0.2 - 2.5 25 - 14
Stripping length: Screw version 7 mm (0.28 in.)

Description

Universal safety relay,
with positively driven contacts

Technical Data

Input Data

Nominal input voltage U_N
Permissible range
Typical current consumption at U_N
Typical response time at U_N
Typical release time at U_N

Type

PSR-SCF- 24UC/URM/2X21
PSR-SCF-120UC/URM/2X21

Order No.

Pcs.
Pkt.

29 81 36 3 1
29 81 37 6 1

24 and 120 V AC/DC¹⁾
0.85 - 1.1 x U_N
30 mA, 9 mA
10 ms (at U_N)
10 ms (at U_N)

Output Data

Contact type
Contact material
Maximum switching voltage
Minimum switching voltage
Limiting continuous current
Maximum inrush current
Minimum switching current
Maximum shutdown power

DPDT contacts
Silver nickel (AgNi)
250 V AC/DC
15 V AC/DC
Form A contact: 5 A, Form B contact: 3.5 A
6 A
10 mA
Ohmic load
 $\tau = 0$ ms
144 W
288 W
88 W
110 W
1500 VA
0.15 W
10⁷ cycles, approximately

24 V DC
48 V DC
110 V DC
220 V DC
250 V AC

Minimum switching power
Mechanical life

¹⁾ 230 V UC on request.

General Data

Permissible ambient operating temperature	-20°C to +50°C (-4°F to +122°F)
Nominal operating mode	100% ED
Air and creepage distances between circuits	DIN EN 50 178/VD E0160:1998-04, basic insulation ²⁾
Degree of protection	According to VDE 0470 Part 1
- Housing	IP20
- Connection terminal blocks	IP20
- Mounting location	IP54, minimum
Mounting position	Any
Mounting	Can be mounted without spacing
Rated voltage	250 V AC
Impulse voltage withstand level	4 kV ²⁾
Degree of pollution	2
Surge Voltage Category	III
Dimensions (W x H x D)	17.5 mm x 60.5 mm x 75 mm (0.689 x 2.382 x 2.953 in.)
Cable cross section	0.2 - 2.5 mm ² (25 -14 AWG)
Housing material	Polycarbonate

3. Connection Notes and Safety Instructions

Note: When operating relay modules the operator must meet the requirements for emitted interference for electrical and electronic equipment (EN 61 000-6-4) on the contact side and, if required, take appropriate measures.

3.1. Safety Instructions

- The safety relay is a universal safety relay with positively driven contacts according to EN 50 205.
- According to EN 50 205, only 1 Form A contact (N/O)/ 1 Form B contact (N/C) may be used a positively driven contacts.

²⁾Safe isolation, reinforced insulation, and 6 kV between the input circuit and the output contact paths.

3.2. Connection Notes

To maintain the UL, use copper cables, which are designed for operating temperatures of 75°C (167°F).

For reliable and safe contacts, strip the connector ends accordingly.

