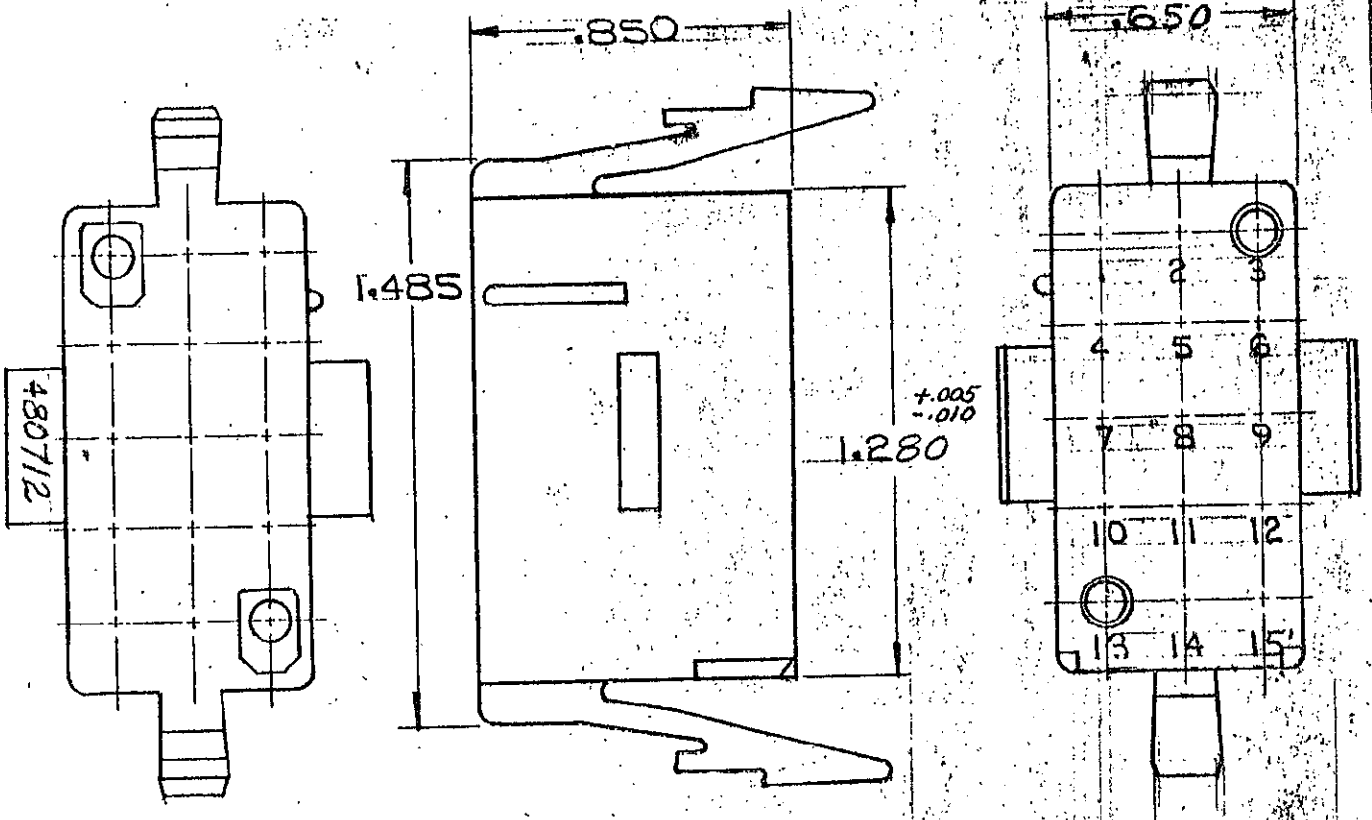


195

SHEET 1 OF 2
NUMBER 480712

+ .005
- .010



- 1. MATES WITH CAP 480713.
- 2. TO BE USED WITH MATE-N-LOK DUAL LANCE SOCKETS.

HOUSING	MATERIAL	COLOR
1-480712-0	NYLON	NATURAL

DIMENSIONS IN INCHES. DO NOT SCALE PRINT.

Unpublished copy not to be reproduced nor published without written permission of AMP Inc.

© 1972 BY AMP INCORPORATED. ALL RIGHTS RESERVED. AMP PRODUCTS COVERED BY PATENTS AND/OR PATENTS PENDING.

CUSTOMER COPY REFERENCE ONLY

MATERIAL AND FINISH.

SEE TABLE



AMP INCORPORATED HARRISBURG, PENNA.

CLASS .084 SOCKET HOUSING

WIRE RANGE INSULATION TYPE

PANEL MOUNT

TOLERANCE EXCEPT AS NOTED ± .010

SCALE NTS

LOC CM

NO. SHEET 1 OF 2

480712

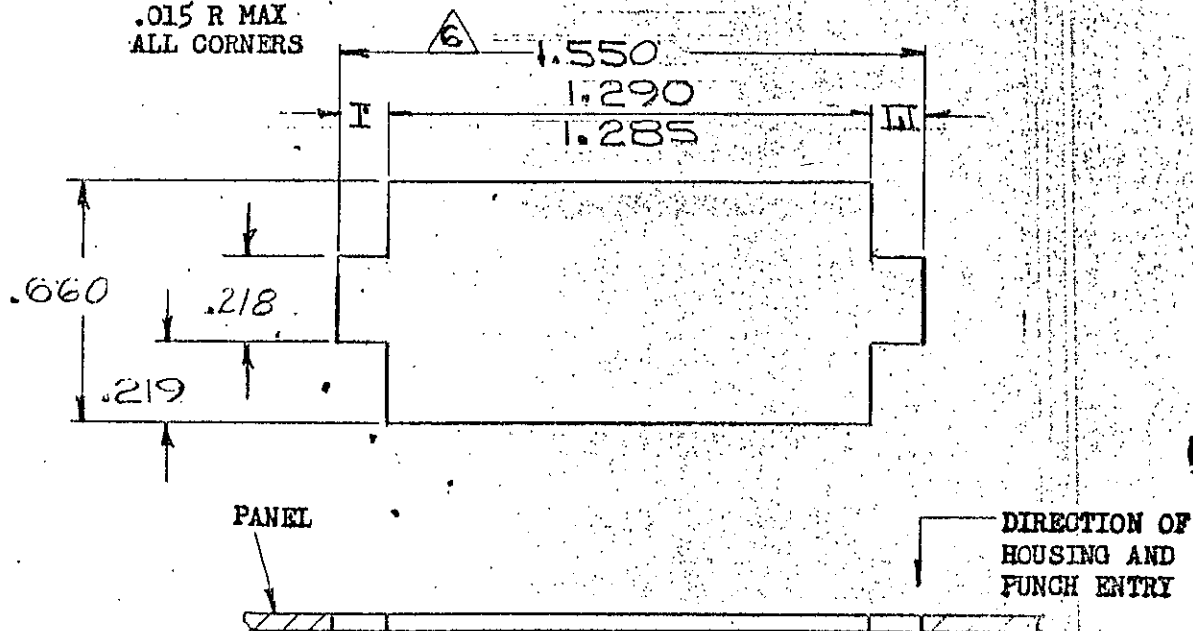
REV F

NAME 15 CIRCUIT MATE-N-LOK PLUG DUAL LANCE HOUSING

DR	DE	DATE
<i>[Signature]</i>	<i>[Signature]</i>	3-21-73
CHK	APP	DATE
<i>[Signature]</i>	<i>[Signature]</i>	3-21-73

PRINT DIST 53

SHEET 2 OF 2
NUMBER 480712



- NOTE: 1. Recommended panel thickness .025 - .065.
2. Both locking legs to be squeezed together and housing to be inserted straight-in, as opposed to a rocking manner of insertion.
3. The panel must be punched so that the housing enters the panel in the same direction as the punch.
4. Dimensions I and II to be equal within .005.
5. Panel must not have any material (paint, porcelain, etc.) applied in the mounting hole area that would decrease retention of the housing in the panel.
6. IF NOTES 3 AND/OR 5 ARE NOT COMPLIED WITH, THE 1.550 DIMENSION SHOULD BE REDUCED TO 1.530 TO ASSURE PROPER HOUSING RETENTION IN THE PANEL.

DIMENSIONS IN INCHES. DO NOT SCALE PRINT

©1973 BY AMP, INCORPORATED. ALL RIGHTS RESERVED. AMP PRODUCTS COVERED BY PATENTS AND/OR PATENTS PENDING

**CUSTOMER COPY
REFERENCE ONLY**

MATERIAL AND FINISH
//



AMP INCORPORATED
HARRISBURG, PENNA.

WIRE — RANGE — INSULATION
//

CLASS //

TOLERANCE EXCEPT AS NOTED
± .005 ± .005

SCALE
NTS

LOC
CM

NO SHEET 2 OF 2
480712

REV
F

LTR	REVISION RECORD	ECN	DR	CHK	DATE
DR	3/19/73		J. Kumbler		3-21-73
CHK	3/19/73		J. Kumbler		3-21-73

NAME RECOMMENDED MOUNTING INFORMATION
15 CIRCUIT MATE-N-LOK PANEL MOUNT PLUG

PRINT DIST
53