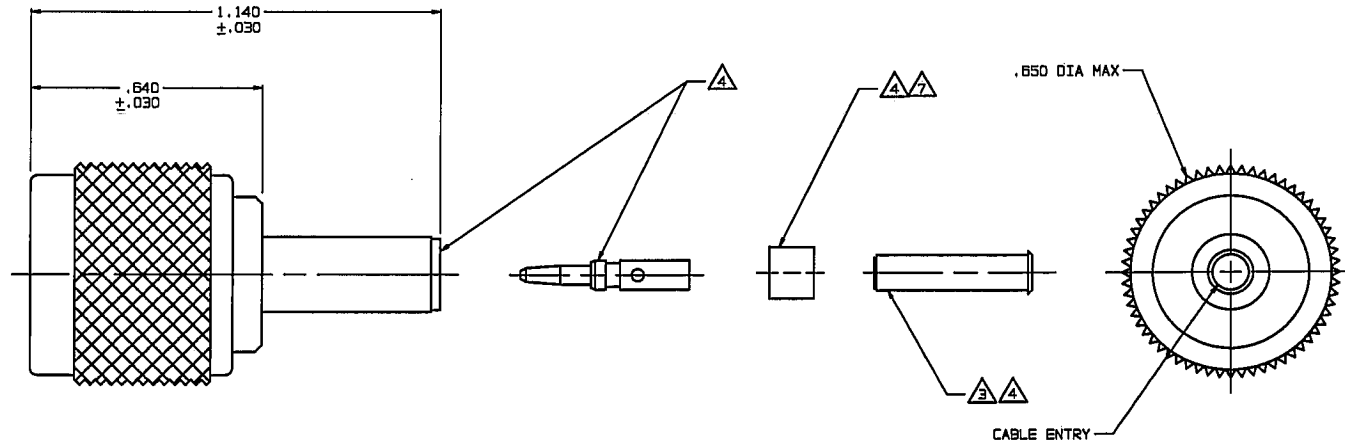


RED INDICATES ORIGINAL

DWG SIZE C	DATA CONTAINED IN THIS DOCUMENT IS PROPRIETARY TO TROMPETER ELECTRONICS, INC. AND SHALL NOT BE DISCLOSED, COPIED OR USED FOR PROCUREMENT OR MANUFACTURE WITHOUT EXPRESS WRITTEN PERMISSION.			REVISIONS			1-0446	SH 1
	REV	ED	DESCRIPTION	DWN	APPROVED	DATE		
	W	10491	DELETED -026 CABLE GROUP; ADDED ITEM 38; SEE ECD	DKC	<i>DKC</i>	3/21/74		

DASH NO	CABLES ACCOMMODATED	A HEX	ASSEMBLE PER
-001	RG-178, -186	.178	TAI-A118
-002	HEWLETT-PACKARD 8120-1107	.187	
-003	RG-174, -188, -316	.178	
-004	RG-178, -187		
-005	MIL 17/094		
-006	GRUMMAN-GCB75GP1 DEL-SHLD RG-188	.197	
-007	275-3991 MICRODOT		
-008	RG-185, -180 421-111 ESSEX	.178	
-009	B21B BELDEN YR23023 21-597 ESSEX		
-010	RG-122		
-011	RG-58, -141, -303 21-537 ESSEX	.213	
-012	RG-55, -142, -223 RG-400		
-013	RG-59		
-013A	TCC-75-2	.255	
-013B	RG-62		
-014	B212 BELDEN		
-015	730A AT&T	.290	
-015A	RG-71		
-016	724 AT&T 8281 BELDEN	.324	
-017	RG-6	.344	
-018	8288 BELDEN		
-019	8278 BELDEN	.255	
-020	8248 BELDEN	.290	
-021	88240 BELDEN	.213	
-022	88241, 88268 BELDEN	.255	
-023	89108 BELDEN		
-024	89120 BELDEN	.290	
-025	734A, AT&T	.255	
-026	735A, AT&T	.178	
-027	KS19224L2, AT&T		



-001 SHOWN

INCH	MM
.005	0.13
.030	0.76
.178	4.52
.187	4.70
.213	5.41
.255	6.48
.290	7.37
.324	8.23
.344	8.73
.640	16.26
.650	16.51
1.140	28.98



A CONTACT SUPPORT BUSHING REQUIRED ON -013B, -015A & -022 ONLY

6. IF SAFETY WIRE TYPE REQD ADD SUFFIX *S* TO MODEL NO EX: PL240S

5. RF COAXIAL TNC FULL CRIMP CABLE PLUG (EQUIV MIL-CAT *D*)

A PIN, SLEEVE, CRIMP SLEEVE & CONTACT SUPPORT BUSHING ARE SUPPLIED LOOSE

A SLEEVE REQUIRED ON -001 THRU -007 & -027 ONLY

2. FINISH: TFS-1A (NICKEL)

1. ALL DIM ARE IN INCHES

B FOR CABLE GROUP -011 SUPPLY 1 EA ACC011 FOR CABLE GROUPS -013, -013A & -013B SUPPLY 1 EA ACC013 MAY BE ASSEMBLED TO CABLE/CONNECTOR ASSY USING 3M SCOTCHGRIP NO. 1099 PLASTIC ADHESIVE, OR EQUIV.

A IF PLASTIC STRAIN RELIEF REQUIRED, ADD SUFFIX *BT* TO MODEL NO. (ONLY AVAILABLE WITH -011, -013, -013A & -013B)

QTY	DESCRIPTION	PART NUMBER	ITEM
TOL UNLESS SPECIFIED ±.005 ±.0005 ANGLES	TROMPETER ELECTRONICS, INC.	PL240/PL240S	
DWN DKC 3-16-84	MATERIAL	CODE IDENT	REV
CHK <i>Bmt</i> 3-18-84		14949	1-0446
ENGR			W
APPR <i>W</i> 3-18-84	SCALE 4/1	DATE 2/3/77	SHEET 1 OF 2

NEXT ASSY