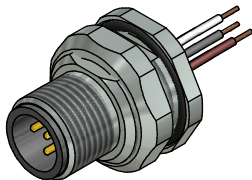


**Contact assignment:**

- 1 ■ brown
- 2 ■ white
- 3 ■ blue
- 4 ■ black
- 5 ■ grey



**Technical specification:**

Rated voltage: 60 V  
IEC 61076-2-101

Current rating: 4 A at 40°C  
IEC 61076-2-101

Insulation resistance: >=100 MΩ  
IEC 60512

Pollution degree: 3/2  
IEC 60664-1

Degree of protection: IP 67, in mated condition  
IEC 60529

Temperature range: -30°C ... +80°C

Mating cycles: >=100  
IEC 60512-9a

**Materials:**

Contact: CuZn

Contact plating: Nickel, gold plated

Contact carrier: PBT GF, UL 94

Sealing chassis: NBR

Counternut: CuZn, nickel plated

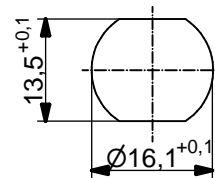
Socket housing: CuZn, nickel plated

Grouting: Polyurethane-resin, UL 94

**Installation specification:**

Recommended torque: 1-1,2 Nm

Conec installation tool: Torque wrench: 36-000200  
Insert across flats 19: 36-000250



Minimum wall thickness 1,5mm,  
alternativ panel cut-out d=16,1

Part no:	Description:	Pos	Length L:	Wire:
43-01052	SAL - 12 - FSH5.1 - 0,5	5	0,5m	AWG 24 PVC, UL
43-xxxxx	SAL - 12 - FSH5.1 - ...	5	x	

DO NOT ALTER CAD DRAWING BY HAND Directive 2002/95/EC RoHS compliant	Index: c 23.11.12 MG Ä4555 Data sheet revised, technical specification changed, materials corrected	dim. in mm	title: <b>Male socket M12x1 with wire, backmounting</b>		
			date	name	dwg no: <b>43K1A209</b>
	tolerance of wire: L <= 0,5m: L + 20mm L > 0,5m: L + 4%	drawn	01.03.07	Fromm	
	general tolerance: 0 ± 0,50mm 0,0 ± 0,25mm 0,00 ± 0,10mm	appd.	01.03.07	Mankopf	



THIS DRAWING MAY NOT BE COPIED OR REPRODUCED IN ANY WAY, AND MAY NOT BE PASSED ON TO A THIRD PARTY WITHOUT WRITTEN PERMISSION. OWNERSHIP AND COPYRIGHT OF CONEC GmbH