

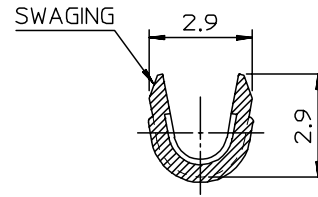
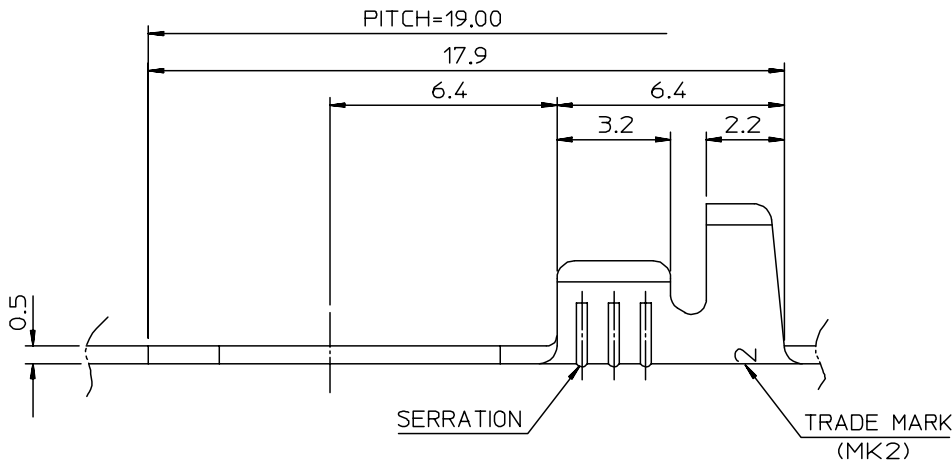
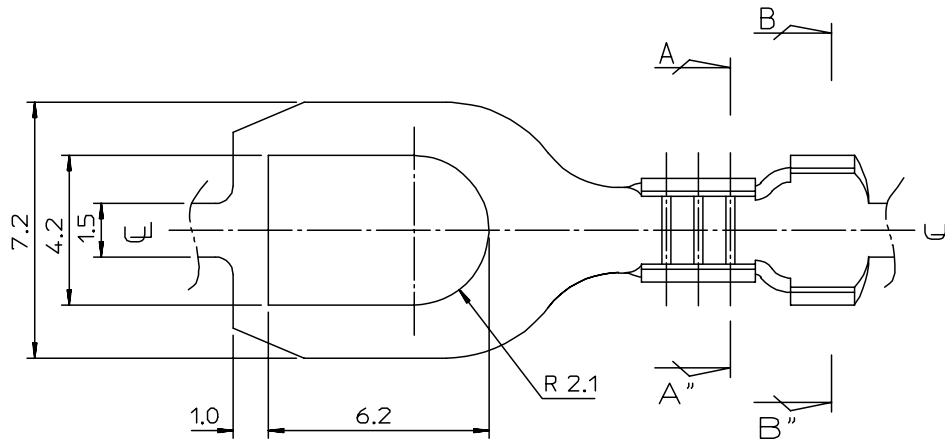
DWG. NO.  
SD-35749-090

SIMILAR ITEM

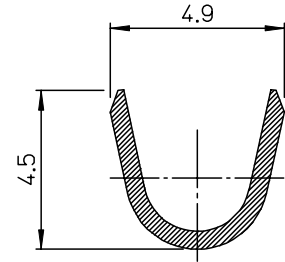
PROJECT NO.

B

DO NOT SCALE DRAWING  
DIMENSION IN METRIC



SEC' : A-A"



SEC' : B-B"

- NOTES
1. MATERIAL : BRASS , 0.5 mm THICKNESS
  2. FINISH : 35749-0900(UNPLATED)  
35749-0910(POST PLATED TIN)  
35749-0940(POST PLATED TIN-LEAD)
  3. RECOMMENDED LENGTH OF WIRE STRIP IS 4.2-4.8 mm.
  4. APPLICABLE WIRE RANGE : AWG #20-#16

REVISED ECN NO. KR2005-0011 DRWN: C.B.CHIN 04/08/16 CHK: W.Y.YANG APPR: C.W.LEE	DESCRIPTION	QUALITY SYMBOLS	GENERAL TOLERANCES: (UNLESS SPECIFIED)		SCALE 7:1	DESIGN UNITS <input checked="" type="checkbox"/> mm <input type="checkbox"/> INCH	THIRD ANGLE PROJECTION <input checked="" type="checkbox"/> THIRD ANGLE	DIMENSIONS: <input type="checkbox"/> mm <input type="checkbox"/> INCH <input checked="" type="checkbox"/> mm ONLY	SHT	REV
		MAJOR ▽ = 0 CRITICAL ▽C = 0	mm	INCH	DRAWN BY & DATE J.SKANG 93/08/25	TITLE: SPADE TERMINAL				
C	REV	4 PLACES	±0.	±-	CHECKED BY & DATE B.K.CHOI 93/08/25		MOLEX INCORPORATED			
		3 PLACES	±0.	±-	APPROVED BY & DATE C.W.LEE 93/08/25					
		2 PLACES	±0.3	±-	CAD FILENAME S7490910AA.MI	MATERIAL NO. SEE NOTES	DRAWING NO. SD-35749-090	SHEET NO. 1 OF 1		
		1 PLACE	±0.3	±-	DRAFT WHERE APPLICABLE MUST REMAIN WITHIN DIMENSIONS		THIS DRAWING CONTAINS INFORMATION THAT IS PROPRIETARY TO MOLEX INCORPORATED AND SHOULD NOT BE USED WITHOUT WRITTEN PERMISSION.		SIZE B	
ANGULAR: ± °										
KOREA MX-A3										