

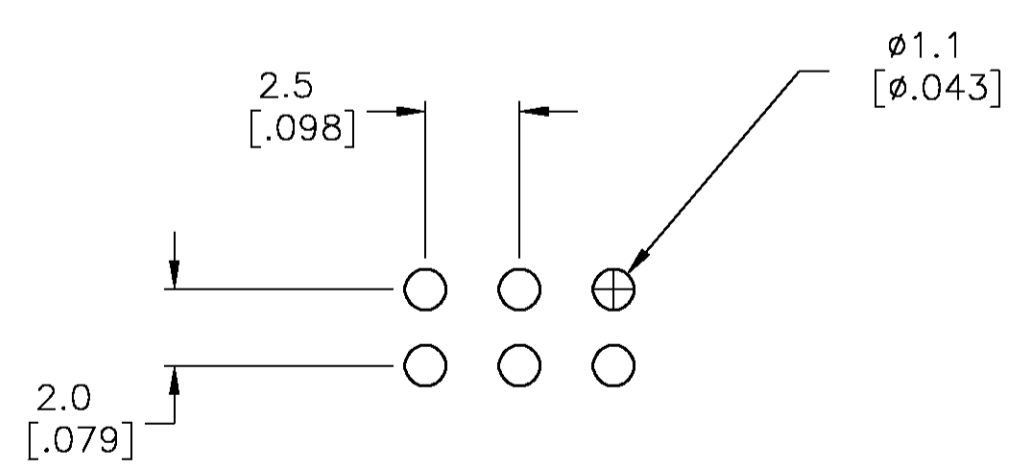
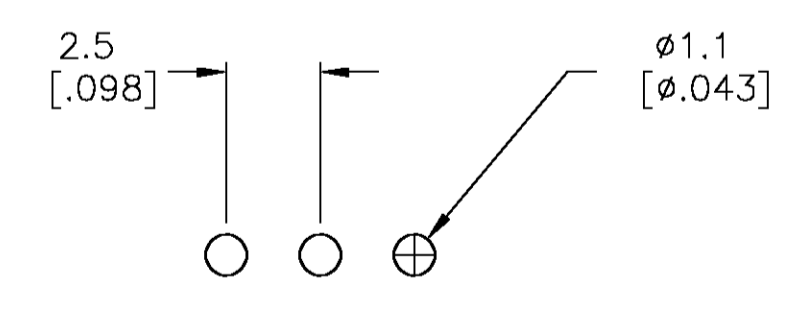
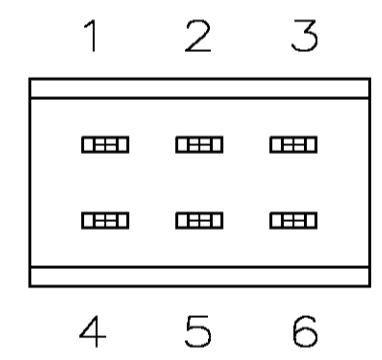
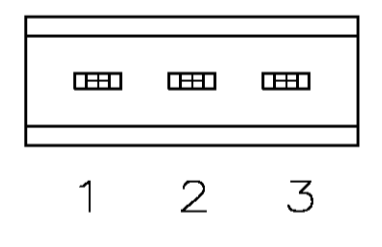
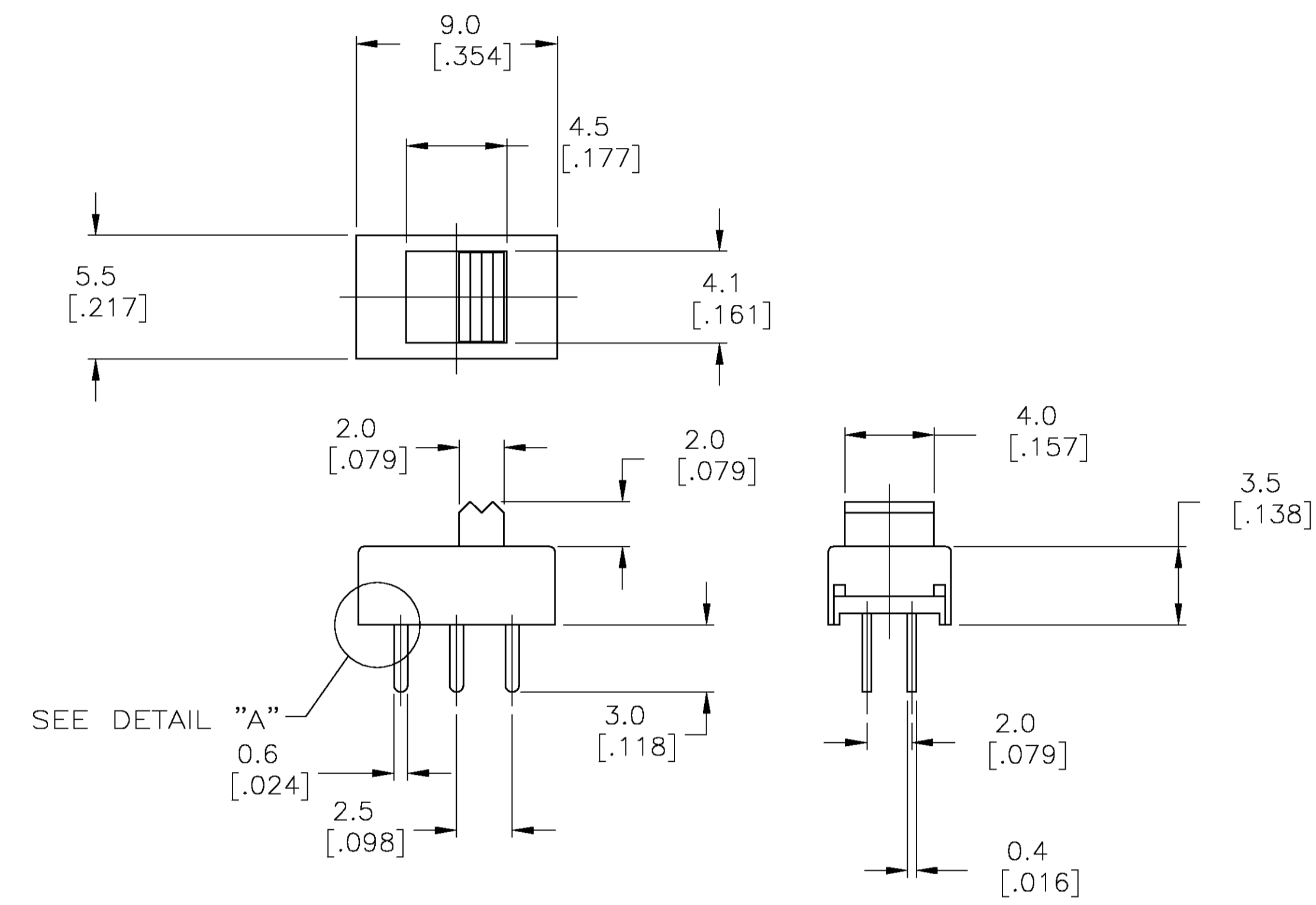
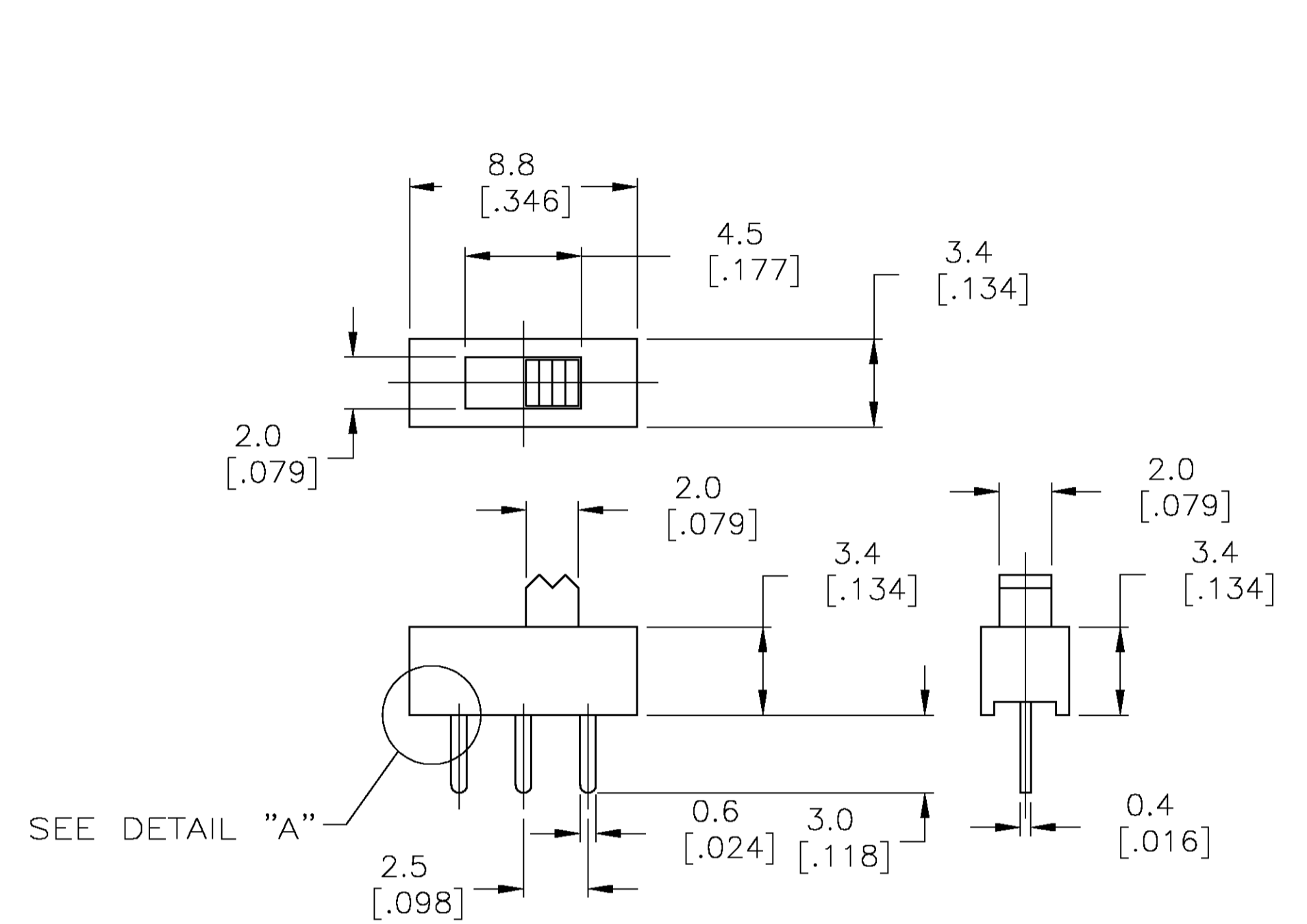
BREAK-BEFORE-MAKE
Specifications:
Materials:
 Case, PPS UL94V-0, Black
 Cover, Polyamide UL94-HB, Black
 Actuator, Polyamide, UL94-HB
 Moving Contact, Copper Alloy-Plate Silver or Gold over Nickel
 Fixed Contact/Terminal, Copper Alloy-Plate Silver or Gold over Nickel

Electrical:
 Contact Rating, (Silver)100mA@30VDC, (Gold) .4VA @ 20V DC, Per EIA-448, Method 6
 Initial Contact resistance, 30 milliohms max, Per EIA-364-23B, each position
 Insulation Resistance, 100 Megohm min. Per EIA-364-21C each position
 Dielectric strength, 500 V AC for 1 minute, Per EIA-364-20B, Condition 1, each position

Mechanical:
 Actuation force, 250 +/-150 grams
 Actuation Travel, .098
 Life Expectancy, 10,000 cycles, Per EIA-448
 Methods 8 and 9 12-15 cycles/min.
 Vibration, Per EIA 364-28D, Condition VII, Level E
 Mechanical Shock, Per EIA-364-27C, Condition A

Environmental:
 Operating Temperature, -20 to +85 degrees C, Per EIA-448, Method 10
 Storage Temperature, -40 to +100 degrees C
 Humidity and Temperature Cycling (Silver), Per EIA-364-31B, Method III
 Mixed Flowing Gas (Gold), Per EIA-364-65A, Class IIIA, 20 days
 Thermal Shock, Per EIA-364-32C, -40 to +100 degrees C
 Solderability, Per EIA-364-52, Class 2, Category 1, 95% Minimum coverage
 Resistance to Solder Heat, Per EIA-364-56A, Procedure 3, Cond. B

1. TESTING TO BE COMPLETED PER 102-2469.

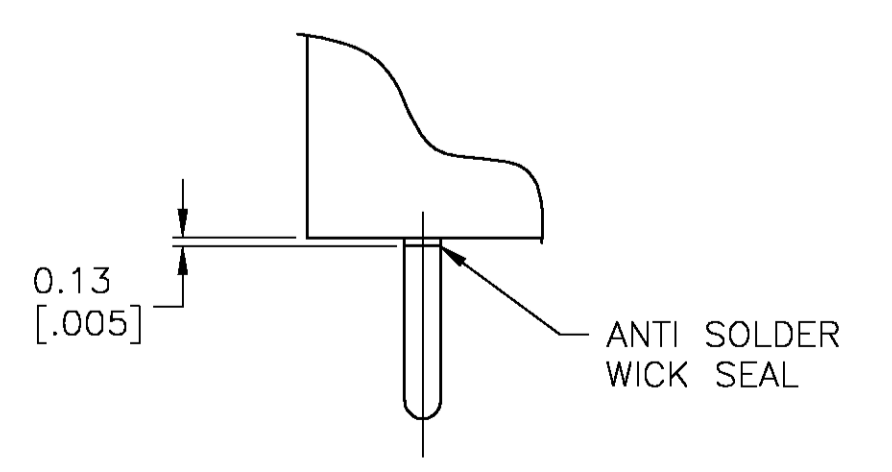


P.C.B. HOLE LAYOUT
 TOLERANCE = ±002

P.C.B. HOLE LAYOUT
 TOLERANCE = ±002

SSA-12

SSA-22



DETAIL "A"
 SCALE 8:1

1571981-4	SSA22G04	DPDT	GOLD	1-2, 4-5	2-3, 5-6
1571981-3	SSA2204	DPDT	SILVER	1-2, 4-5	2-3, 5-6
1571981-2	SSA12G04	SPDT	GOLD	1-2	2-3
1571981-1	SSA1204	SPDT	SILVER	1-2	2-3
TYCO P/N	ALCO P/N	TYPE	PLATING	LEFT	RIGHT

THIS DRAWING IS A CONTROLLED DOCUMENT.

DIMENSIONS: mm [INCHES]	TOLERANCES UNLESS OTHERWISE SPECIFIED: 0 PLC ± - 1 PLC ± - 2 PLC ± 0.25[.010] 3 PLC ± - 4 PLC ± - ANGLES ± 1°	DIM M. BINNER 23AUG04 CHK M. SARVER 23AUG04 APVD M. SARVER 23AUG04 PRODUCT SPEC APPLICATION SPEC WEIGHT CUSTOMER DRAWING	Tyco Electronics Corporation Harrisburg, Pa 17105-3608 NAME: SLIDE SWITCH, LOW PROFILE SSA 12 & 22 Series SIZE: A1 CAGE CODE: 00779 DRAWING NO: 1571981 SCALE: 5:1 SHEET: 1 OF 1 REV: A
----------------------------	---	--	--