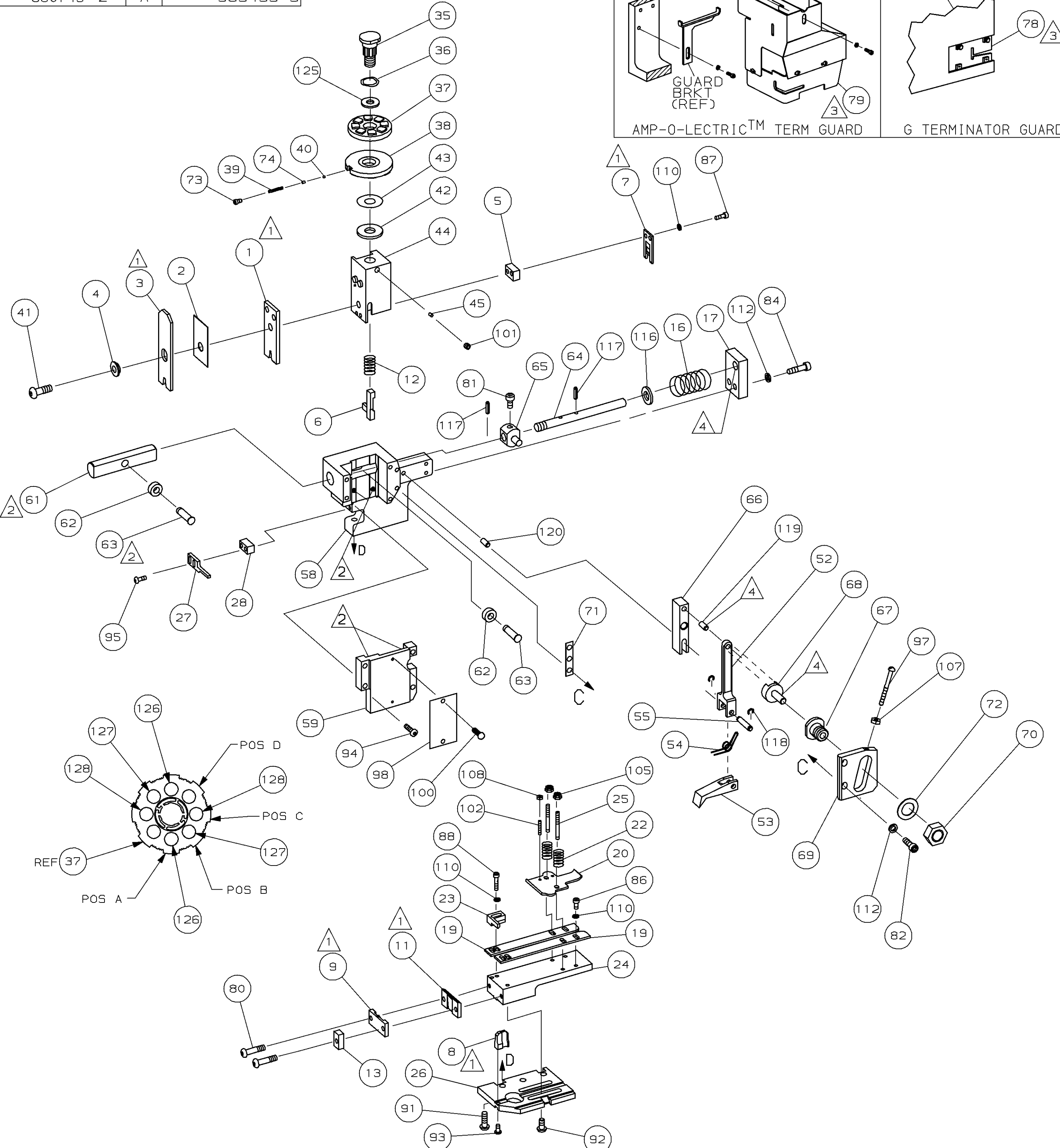
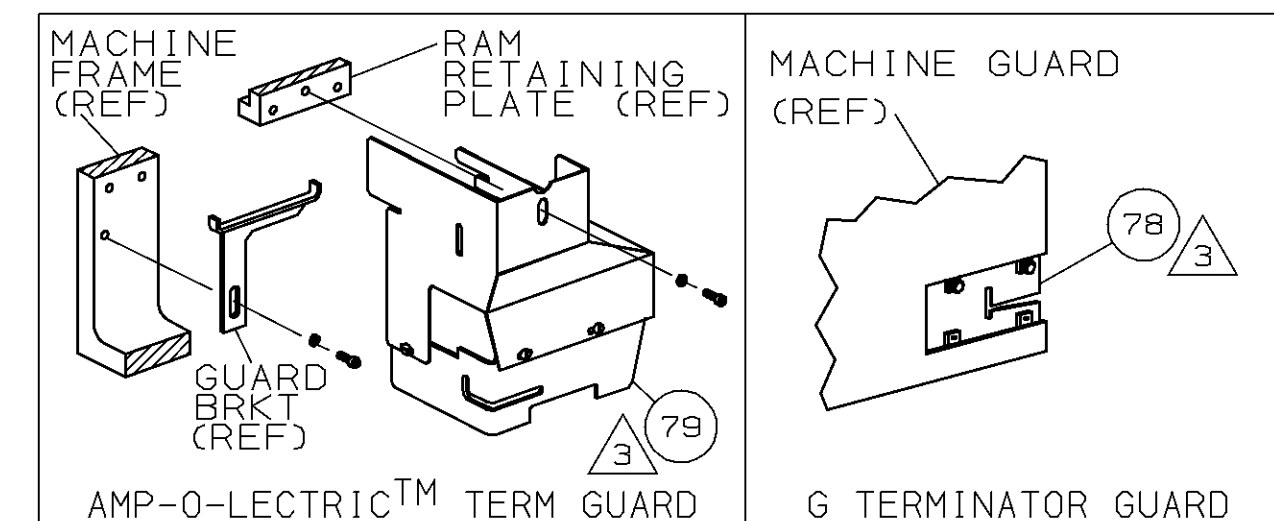


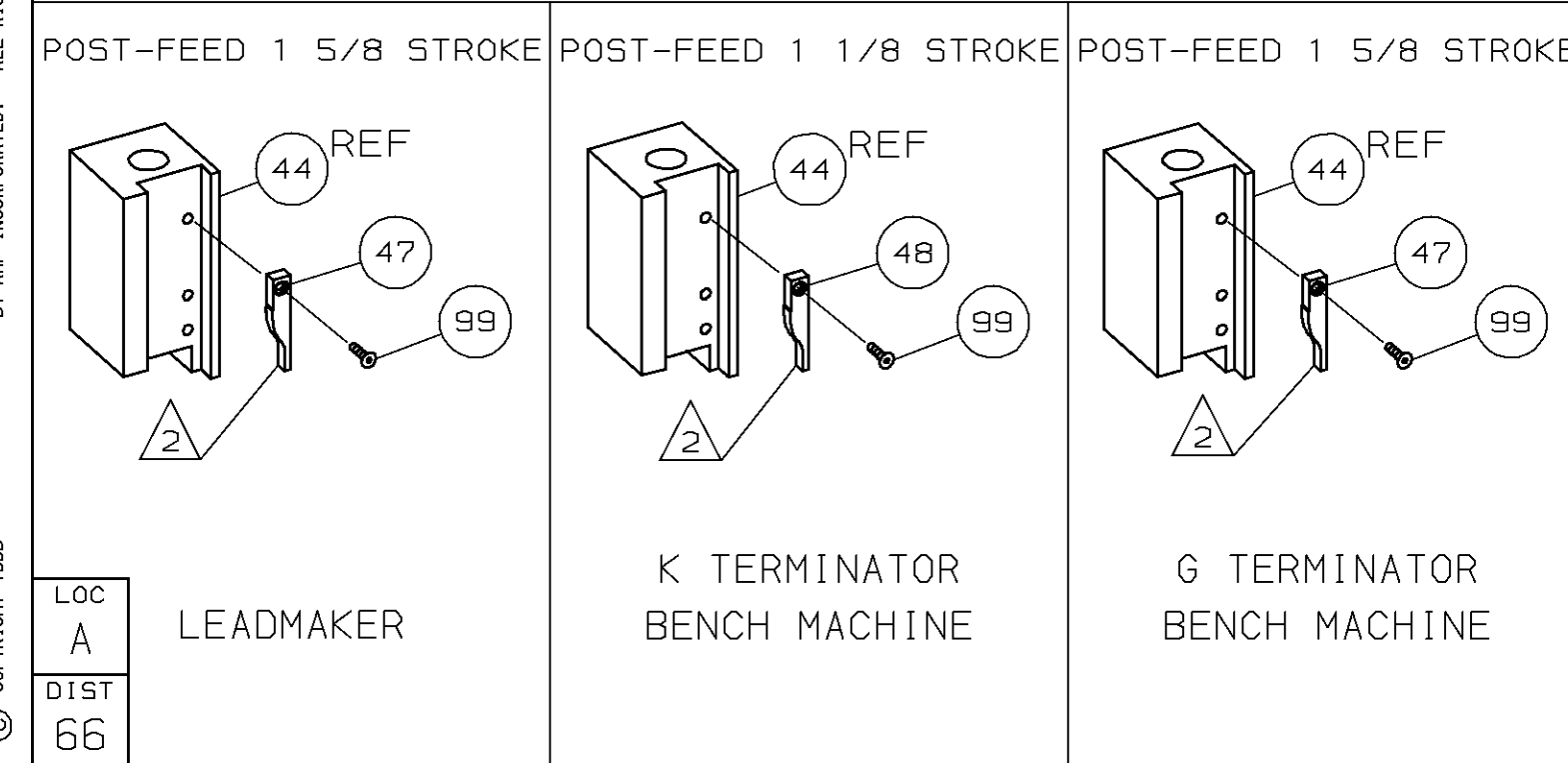
PART NUMBER	REV	FIRST USED
680743-1	A	122500-1
680743-2	A	565435-5



TERMINAL NAME: .250 SRS FASTIN-ON™ RECEPTACLE				
160860 CRIMP DATA (AMP TERMINAL)				
PAD LTR	CRIMP HEIGHT	WIRE SIZE		
A	.063 ± .002 [1.61 ± 0.05mm]	1.00mm ²		
B	.060 ± .002 [1.52 ± 0.05mm]	0.75mm ²		
C	.056 ± .002 [1.43 ± 0.05mm]	0.50mm ²		
D	NOT	USED		
CRIMP	SIZE	TYPE	RANGE	
WIRE	.080 [2.03mm]	F	0.50mm ² - 1.00mm ²	
INSUL	.110 [2.79mm]	OV	ø1.4mm - 2.3mm	
WIRE STRIP LENGTH	TERM APPL SPEC	FEED	APPL INSTRUCTION	SET UP GAGE LAYOUT
.172-.203	114-2065	.843	408-8039	458638-1 L2169

-1 LEADMAKER & BENCH MODEL G		MECH POST FEED			
-2 BENCH MODEL K		MECH POST FEED			
REF	REF	-	A	22594-8	NUT, HEX
REF	REF	-	B	240628-1	PLATE, ADJ
REF	REF	-	B	240626-1	SHAFT, PIVOT
REF	REF	-	B	240633-1	BUSHING
REF	REF	-	A	455680-1	LEVER, INTERMEDIATE
REF	REF	-	B	240629-1	BLOCK, PIVOT
REF	REF	-	A	240632-2	SCR, ADJ
REF	REF	-	B	240659-3	PIN, CAM ROLLER
REF	REF	-	B	240658-1	CAM, ROLLER
REF	REF	-	B	454398-1	ROD, FEED
REF	REF	-	C	454220-1	CAP, RAM
REF	REF	-	D	453736-1	HOUSING
REF	REF	-	B	240624-1	PIN, FEED FINGER
REF	REF	-	B	691499-1	SPRING, FEED FINGER
REF	REF	-	B	240635-1	FINGER, FEED
REF	REF	-	B	240634-1	LEVER, TERMINAL
1	-	-	B	690501-3	CAM, POST FEED 1 1/8 ST
-	1	-	B	690501-4	CAM, POST-FEED 1 5/8 ST
1	1	-	A	690191-1	PLUG, NYLON
1	1	-	C	455674-1	RAM
1	1	-	A	690125-1	WASHER, LAMINATED
1	1	-	A	690124-1	WASHER, RAM
1	1	-	A	7-21002-9	BOLT, CRIMPER (5/16-24x1.00)
1	1	-	A	23241-6	BALL, STEEL
1	1	-	A	690170-1	SPRING, COMPRESSION
1	1	-	C	690142-1	DISC, INSULATION
1	1	-	D	354777-1	WIRE DISC, PLASTIC
1	1	-	A	22480-5	WASHER, SPRING
1	1	-	B	690212-1	POST, RAM
1	1	-	A	458980-1	APPLICATOR, BASIC (SUB ASSY)
1	1	-	B	3-690451-2	SPACER, STRIPPER
1	1	-	A	240639-1	STRIPPER
REF	REF	-	C	455676-1	PLATE, BASE
2	2	-	A	22354-8	DRAG, STUD
1	1	-	B	458803-2	PLATE, STRIP GUIDE
1	1	-	C	240825-1	PLATE, STRIP HOLD DOWN
2	2	-	A	4-22281-1	SPRING, DRAG
1	1	-	A	454177-1	DRAG, STOCK
2	2	2	B	454204-1	GUIDE, STRIP (REAR)
REF	REF	-	A	454178-1	GUIDE, FEED ROD
REF	REF	-	A	4-22284-9	SPRING, FEED RETURN
1	1	-	C	690481-2	SPACER, HOLD DOWN
1	1	-	A	23846-1	SPRING, HOLD DOWN
1	1	-	B	240833-2	PLATE, REAR SHEAR
1	1	-	B	690482-3	PLATE, FRONT SHEAR
1	1	-	D	2-356038-4	ANVIL
1	1	-	B	690474-3	BLADE, SLUG
1	1	-	D	2-455892-7	HOLD DOWN, TERMINAL
1	1	-	C	1-240641-0	SPACER, SLUG BLADE
1	1	-	B	238009-1	SPACER, BLOCK CRIMPER
1	1	-	C	2-854830-8	CRIMPER, INSULATION
1	1	-	B	1-455888-0	SPACER, CRIMPER
1	1	-	C	1-456405-3	CRIMPER, WIRE

QTY	REF	REV	U/M	DWG SIZE	PART NO	DESCRIPTION	ITEM NO
2	2	-	C		1-354779-7	PIN, WIRE DISC (.3075)C	129
2	2	-	C		354779-9	PIN, WIRE DISC (.3035)B	127
2	2	-	C		354779-3	PIN, WIRE DISC (.3005)A	126
1	1	-	A		986950-1	WASHER, FLAT PRECISION	125
1	1	-	A		217238-1	GENERAL INSTRUCTION PACKAGE	124
1	1	-	-		4088039	EF APPL INST 408-8039	123
REF	REF	-	A		1-21030-7	PIN, DOWEL (ø.187x1.50)HSG	120
REF	REF	-	A		1-21030-1	PIN, DOWEL (ø.187x.50)LEVER	119
REF	REF	-	A		21045-3	RING, RET "C" (ø.187)FD PIN	118
REF	REF	-	A		5-21028-1	PIN, STD SPRING (ø.12)FD ADJ ROD	117
REF	REF	-	A		21899-4	WASHER, FLAT (ø5/16)SCR ADJ	116
REF	REF	-	A		21024-5	WASHER, LOCK (NO.10)FD ROD GDE	112
6	6	-	A		21024-4	WASHER, LOCK (NO.8)SHEAR BL	110
2	2	-	A		21018-4	NUT, HEX (4-40)DRAG	109
REF	REF	-	A		21018-5	NUT, HEX (6-32)FD ADJ PL	107
2	2	-	A		21022-2	NUT, HEX SL (8-32)DRAG STUD	105
2	2	-	A		2-21006-6	SCR, SKT SET (4-40x.62)DRAG	102
1	1	-	A		21009-2	SCR, SKT SET (1/4-20x.25)RAM	101
2	2	-	A		21017-2	SCR, DRIVE (#2x.19) ID PLATE	100
1	1	-	A		1-21002-7	SCR, BHC (6-32x.38)CAM	99
1	1	-	B		461264-1	PLATE, IDENTIFICATION	98
REF	REF	-	A		6-23715-5	SCR, PAN HD (6-32x1.50)FEED ADJ	97
2	2	-	A		2-21002-2	SCR, BHC (8-32x.50)STRIPPER	95
REF	REF	-	A		2-21002-9	SCR, BHC (10-32x.75)HSG CAP	94
1	1	-	A		22733-8	SCR, BHC (8-32x.38 LW)ANVIL	93
4	4	-	A		3-21002-3	SCR, BHC (1/4-20x.50)ST GD PL	92
REF	REF	-	A		2-22733-8	SCR, BHC (1/4-20x.62)BASE PL	91
1	1	-	A		2-21000-8	SCR, SHC (8-32x.62)STRIP HLD DWN	88
2	2	-	A		2-21000-7	SCR, SHC (8-32x.50)SLUG BLADE	87
3	3	-	A		2-21000-6	SCR, SHC (8-32x.38)STRIP GUIDE	86
REF	REF	-	A		3-21000-7	SCR, SHC (10-32x.75)FEED ROD GDE	84
REF	REF	-	A		3-21000-6	SCR, SHC (10-32x.62)FEED ADJ PL	82
REF	REF	-	A		3-21000-4	SCR, SHC (10-32x.38)PIVOT BLOCK	81
2	2	-	A		3-21002-0	SCR, BHC (10-32x.88)SHEAR PL	80
REF	-	-	A		455745-1	GUARD, WINDOW	79
-	REF	-	A		679532-1	INSERT, GUARD	78
1	1	-	A		690603-1	SPRING, ASSIST	74
1	1	-	A		23030-1	SCR, SKT CAP (6-32x.25)CP DSC	73
REF	REF	-	A		458109-1	WASHER, FLAT (SPECIAL)	72
REF	REF	-	A		690517-1	SPACER	71



- 1 RECOMMENDED SPARE PARTS.
- 2 GREASE LIGHTLY.
- 3 GUARD MUST BE IN PLACE WHEN OPERATING APPLICATOR IN A BENCH MACHINE.
- 4 LUBRICATE DAILY USING NO. 20 MACHINE OIL.
- 5. ITEMS WITH QTY OF REF SPECIFIED (EXCEPT ITEMS 78 AND 79) ARE USED ON ITEM 32.
- 6 ITEM 78 USED WITH G TERMINATOR ONLY.

QTY	REF	REV	U/M	DWG SIZE	PART NO	DESCRIPTION	ITEM NO
-2	-1	-	U/M				

THIS DRAWING IS A CONTROLLED DOCUMENT.

THIS DRAWING IS UNCLASSIFIED
 RELEASED FOR PUBLICATION
 BY AMP INCORPORATED. ALL RIGHTS RESERVED.
 JAMES 1989
 COPYRIGHT 1989
 LOC A
 DIST 66
 AMP 1756 REV 3-92

DIMENSIONS IN INCHES. DO NOT SCALE PRINT.
 TOLERANCES UNLESS OTHERWISE SPECIFIED:
 2 PLC DEC ±
 3 PLC DEC ±
 4 PLC DEC ±
 ANGLES ±
 SURF TEXTURE: ✓
 REMOVE BURRS, BREAK SHARP EDGES R.015 MAX

MATL - HT TR - FIN -
 DR 04NOV98 APP 05NOV98
 R.O.WILSON T.ELBIN
 CHK 05NOV98 REL -
 C.ERISMAN
AMP AMP Incorporated
 Harrisburg, PA 17105-3608
 NAME END FEED HDM APPLICATOR MACHINE REF
 SCALE - DWG NO 680743 SHEET 1 OF 1 REV A
 CASE CODE 00779 CUSTOMER AND ASSEMBLY DRAWING RESTRICTED TO