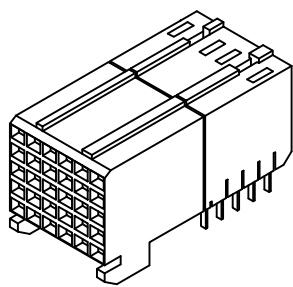
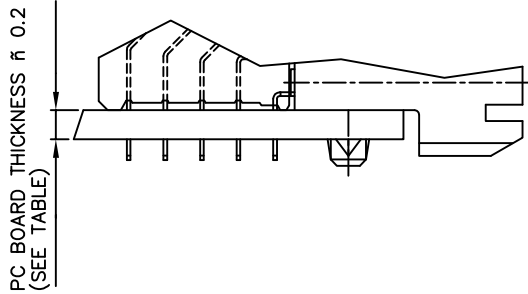
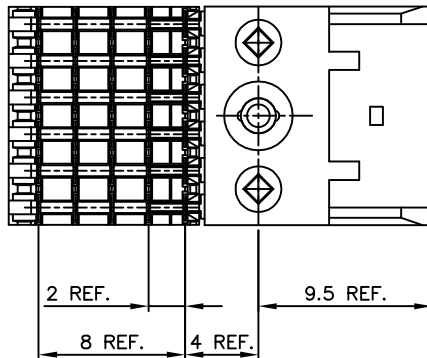
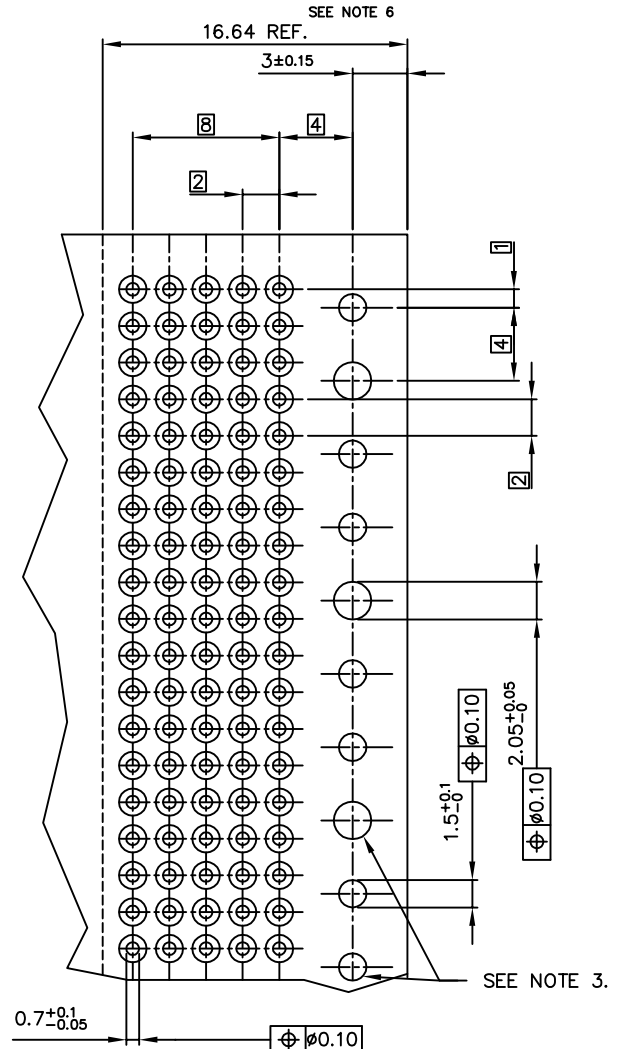
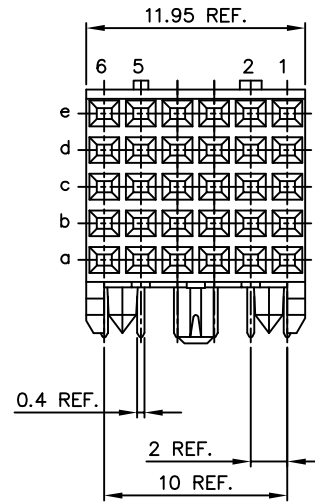
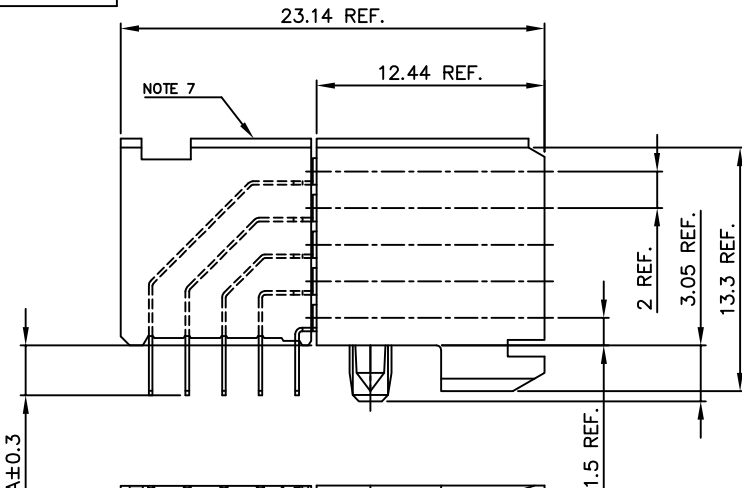


PRODUCT NR
85638-YYY



- NOTES:
 1 BODY MAT'L: LIQUID CRYSTAL POLYMER 30% GLASS
 FLAME RETARDANT ACC. UL 94-V0
 2 TERMINAL MATERIAL: PHOSPHOR BRONZE.
 3 INDICATED HOLES ARE UNPLATED.
 4 PLATING OF SOLDER TAILS 2-8 um SnPb 90-97
 5 PRODUCT MARKING: PART NUMBER & BATCH ID.
 6 SET BACK FOR TAIL BLOCK
 7 TOP SURFACE OF PRESS BLOCK MAY EXTEND UP TO 4mm
 HIGHER THAN HOUSING. THIS MAY AFFECT THE TAIL LENGTH
 BEFORE APPLICATION TO A BOARD

PLATING CONTACT AREA:	
DASH NR:	PERFORMANCE LEVEL
-1YY/1YLF	TELCORDIA CO
-2YY/2YLF	CUSTOMER SPECIAL
-3YY/3YLF	CUSTOMER SPECIAL

mat'l. code		tolerances unless otherwise specified		CUSTOMER COPY		FCG ELECTRONICS	
SEE NOTES						www.fcconnect.com	
lfr	ecn no	dr	date	linear	projection	title	5R RA Stb Sig
H	D609-0088	Cent	06/06/09			RECEIPT	12mm PP SL
J	D610-0147	Cent	04/19/10				
K	D610-0231	Cent	2010/7/7	angles			
		dr	VISSCHERS IB	980512	mm	product famil	METRAL(tm)
E	V10906	VIB	010222	engr	M LOMAN	980512	code
F	D607-0188	Cent	05/10/07	chr	M LOMAN	980512	size
G	D606-0171	TER	8/26/08	app	COOLMANS	980512	scale
sheet	revision	K	K			5:1	A2
index	sheet	1	2				85638
							213
							sheet
							1 of 2

All rights reserved. Reproduction or use in third parties, in any form, without written authority from the copyright holder is prohibited.
 All rights reserved. Reproduction or use in third parties, in any form, without written authority from the copyright holder is prohibited.
 All rights reserved. Reproduction or use in third parties, in any form, without written authority from the copyright holder is prohibited.
 All rights reserved. Reproduction or use in third parties, in any form, without written authority from the copyright holder is prohibited.

PRODUCT NUMBER	CONFIGURATION						DIM A	PCB Thickness	
	ROW	1	2	3	4	5			6
85638-X01LF	E	X	-	X	-	X	-	2.90	1.6
	D	-	X	-	X	-	X		
	C	X	-	X	-	X	-		
	B	-	X	-	X	-	X		
	A	X	-	X	-	X	-		
85638-X02LF	E	X	-	X	-	X	-	3.53	2.4
	D	-	X	-	X	-	X		
	C	X	-	X	-	X	-		
	B	-	X	-	X	-	X		
	A	X	-	X	-	X	-		
85638-X03LF	E	X	-	X	-	X	-	2.90	1.6
	D	X	-	X	-	X	-		
	C	-	-	-	-	-	-		
	B	X	-	X	-	X	-		
	A	X	-	X	-	X	-		
85638-X04LF	E	X	-	X	-	X	-	3.53	2.4
	D	-	-	-	-	-	-		
	C	X	-	X	-	X	-		
	B	-	-	-	-	-	-		
	A	X	-	X	-	X	-		
85638-X05LF	E	X	X	X	X	X	X	2.90	1.6
	D	X	X	X	X	X	X		
	C	X	X	X	X	X	X		
	B	-	-	-	-	-	-		
	A	X	X	X	X	X	X		
85638-X06LF	E	X	X	X	X	X	X	3.53	2.4
	D	X	X	X	X	X	X		
	C	X	X	X	X	X	X		
	B	-	-	-	-	-	-		
	A	X	X	X	X	X	X		
85638-X07LF	E	X	X	X	X	X	X	2.90	1.6
	D	X	X	X	X	X	X		
	C	-	-	-	-	-	-		
	B	X	X	X	X	X	X		
	A	X	X	X	X	X	X		

"-" POSITION NOT LOADED
 "X" POSITION LOADED

mat'l. code		tolerances unless otherwise specified		CUSTOMER COPY	FCI ELECTRONICS	
SEE NOTES					www.fciconnect.com	
ltr	ecn no	dr	date	linear	projection	title
K						5R RA Stb Sig
				angles		RECEIPT 12mm PP SL
		dr	VISSCHERS IB	980512	mm	product familMETRAL(TM)
		enr	M LOMAN	980512	scale	code
		chr	M LOMAN	980512	1:1	213
		app	H COOLMANS	980512	size	sheet
					A2	85638
sheet index	revision sheet					2 of 2