

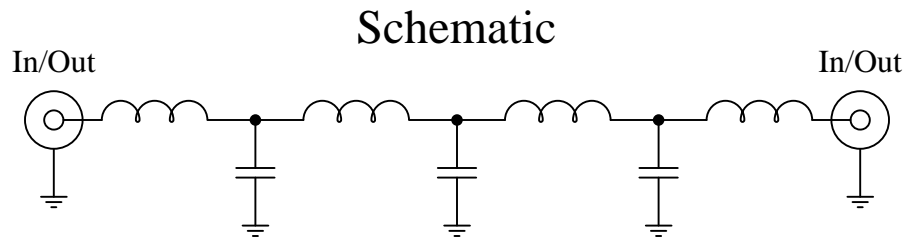
Low Pass Filter
50Ω SMA
7th Order



Part Number: CLPFL-0600

Low Pass Range
DC to 600MHz

New
Low Pass Filters



Features:

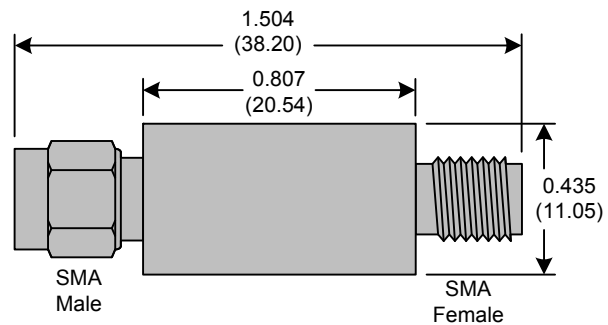
- 7th Order Butterworth Response
- 50Ω SMA Connectors

Applications:

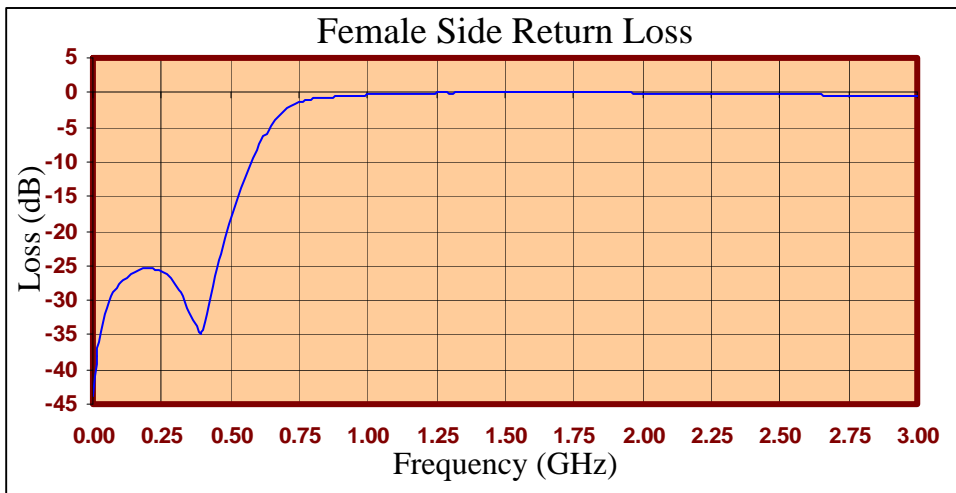
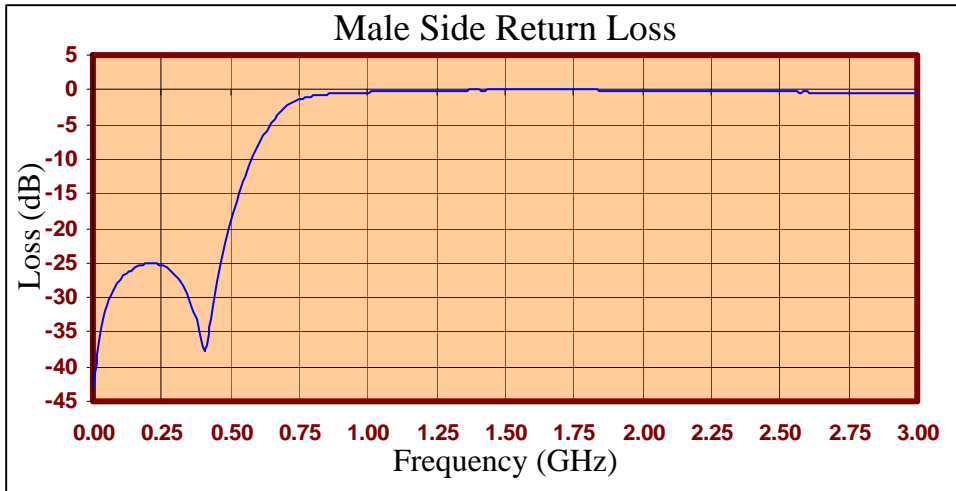
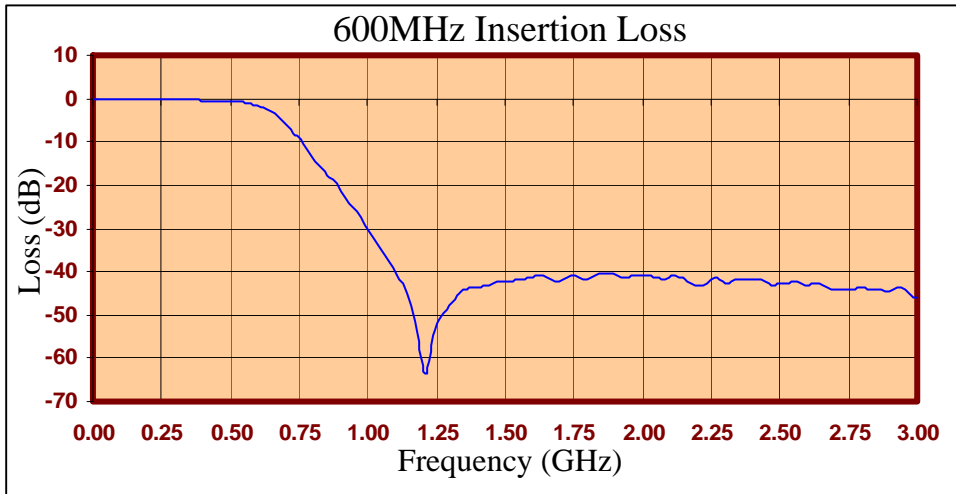
- Test Equipment
- Lab Use

Maximum Ratings:

- +36dBm (4 Watts)
- Operating Temperature: -40°C to 85°C
- Storage Temperature: -55°C to 100°C



Crystek's new line of Low Pass Filters are designed in a rugged SMA housing. This filter line has excellent out-of-band rejection. Designed for Test Equipment and General Lab Use.





| FREQ (MHz) | INSERTION LOSS (dB) | Male Return Loss (dB) | Female Return Loss (dB) |
|------------|---------------------|-----------------------|-------------------------|
| 0.3 | -0.05 | -43.91 | -43.81 |
| 15.3 | -0.05 | -38.35 | -38.04 |
| 30.3 | -0.13 | -34.55 | -34.48 |
| 45.3 | -0.12 | -32.11 | -31.97 |
| 60.3 | -0.15 | -30.39 | -30.25 |
| 75.3 | -0.16 | -29.08 | -28.94 |
| 90.3 | -0.20 | -28.09 | -28.10 |
| 105 | -0.18 | -27.27 | -27.23 |
| 120 | -0.19 | -26.61 | -26.74 |
| 135 | -0.20 | -26.18 | -26.17 |
| 150 | -0.26 | -25.77 | -25.83 |
| 165 | -0.26 | -25.43 | -25.54 |
| 180 | -0.28 | -25.22 | -25.48 |
| 195 | -0.27 | -25.13 | -25.35 |
| 210 | -0.27 | -25.06 | -25.30 |
| 225 | -0.29 | -25.08 | -25.50 |
| 240 | -0.30 | -25.23 | -25.59 |
| 255 | -0.32 | -25.44 | -25.99 |
| 270 | -0.32 | -25.76 | -26.35 |
| 285 | -0.32 | -26.17 | -26.86 |
| 300 | -0.33 | -26.69 | -27.68 |
| 330 | -0.38 | -28.36 | -29.36 |
| 405 | -0.43 | -37.66 | -33.24 |
| 450 | -0.56 | -27.67 | -25.44 |
| 510 | -0.61 | -17.88 | -17.30 |
| 585 | -1.39 | -9.58 | -9.47 |
| 705 | -6.27 | -2.35 | -2.37 |
| 810 | -14.48 | -0.86 | -0.89 |
| 900 | -21.24 | -0.55 | -0.54 |
| 1005 | -30.89 | -0.37 | -0.32 |
| 1245 | -53.38 | -0.14 | -0.09 |
| 1500 | -42.23 | -0.03 | 0.00 |
| 1755 | -41.06 | -0.05 | 0.00 |
| 1995 | -40.94 | -0.10 | -0.09 |
| 2250 | -41.82 | -0.18 | -0.19 |
| 2505 | -42.84 | -0.31 | -0.30 |
| 2745 | -44.29 | -0.44 | -0.41 |
| 3000 | -45.80 | -0.58 | -0.49 |

Product Control:

| | | | |
|----------------------|------------|---------------|---------------|
| Crystek Part Number: | CLPFL-0600 | Release Date: | 09-Jun-10 |
| Revision Level: | A | Responsible: | K. Piotrowicz |

