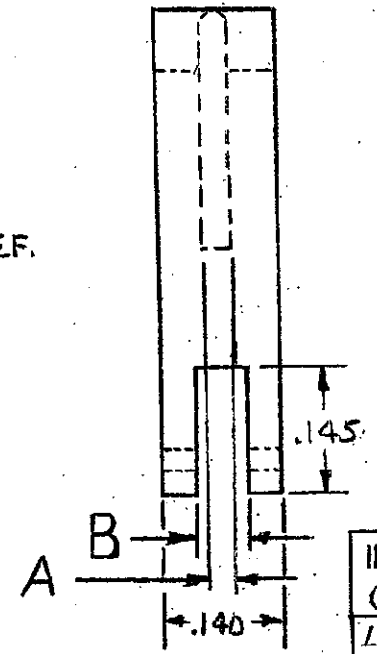
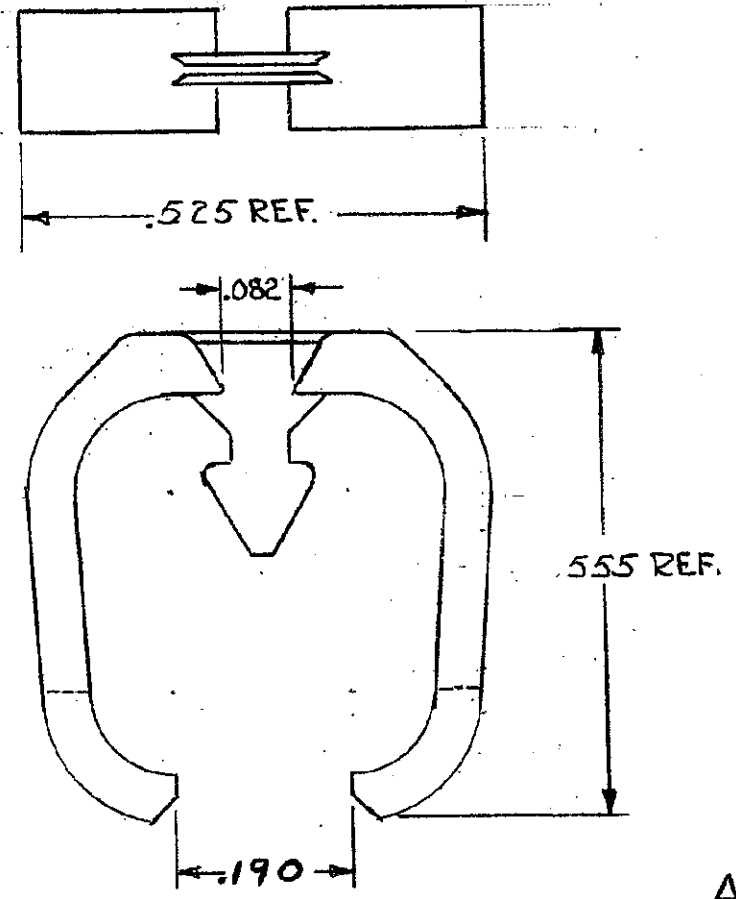


DRAWING MADE IN THIRD ANGLE PROJECTION

© COPYRIGHT 1974 BY AMP INCORPORATED, HARRISBURG, PA.  
 ALL INTERNATIONAL RIGHTS RESERVED. AMP INCORPORATED PRODUCTS  
 COVERED BY U. S. AND FOREIGN PATENTS AND/OR PATENTS PENDING.

Unpublished copy not to be reproduced  
 without written permission of AMP Incorporated


		REVISIONS			LOC	DIST
F	ZONE	LTR	DESCRIPTION	DATE	FT	22
✓		0	RELEASED 5193-324-1 m.s.	4-28-75		
✓		01	ADDED - 2 WAS 5193-324-2 4517	7-2-75	m.s.	D.R.
✓		A	REVISED 5843 m.s.	1-17-77		
✓		B	REV PER AD4842	8/90	CP/HWR	
✓		C	REV PER EC 0320-209-97	7-1-97	NS	



OBSOLETE

INTERCONTACT KEY FOR .100 & CONN.; USE INSERTION TOOL 91081-2	.040	.033 .028	530286-3
INTER CONTACT KEY FOR .125, .150 & .156 & CONN.; USE INSERTION TOOL 91081-1	.050	.048 .043	530286-2
INTER CONTACT KEY FOR .100 & CONN.; USE INSERTION TOOL 91081-2	.040	.033 .028	530286-1

REMARKS "B" "A" PART NO

UNLESS OTHERWISE SPECIFIED DIMENSIONS ARE IN INCHES. TOLERANCES ON: DECIMALS ± ANGLES ±	CONTRACT NO	 <b>AMP INCORPORATED</b> Harrisburg, Pa.	
	DR <i>Amabile</i> 12-12-74		
MATERIAL <b>NYLON.</b>	CHK <i>Amabile</i> 4-28-75	NAME <b>KEYING PLUG, TWIN LEAF CONNECTOR.</b>	
	APPD <i>Kaufman</i> 4-28-75	SIZE <b>B</b>	CODE IDENT-NO <b>00779</b>
FINISH	APPD <i>Sholima</i> 4/29/75	DRAWING NO <b>530286</b>	SHEET <b>1</b> OF <b>1</b>
	DSGN APPD	SCALE	
OTHER APPD			