

NOTES)
 1. ALL LEADS METAL FITTINGS CO-PLANARITY SHALL BE 0.1mm MAX.
 2. IS NON-CONDUCTIVE AREA.

RECOMMENDED METAL MASK THICKNESS: 120 μm
 RECOMMENDED MASK OPENING RATIO: 80% FOR LEAD PAD

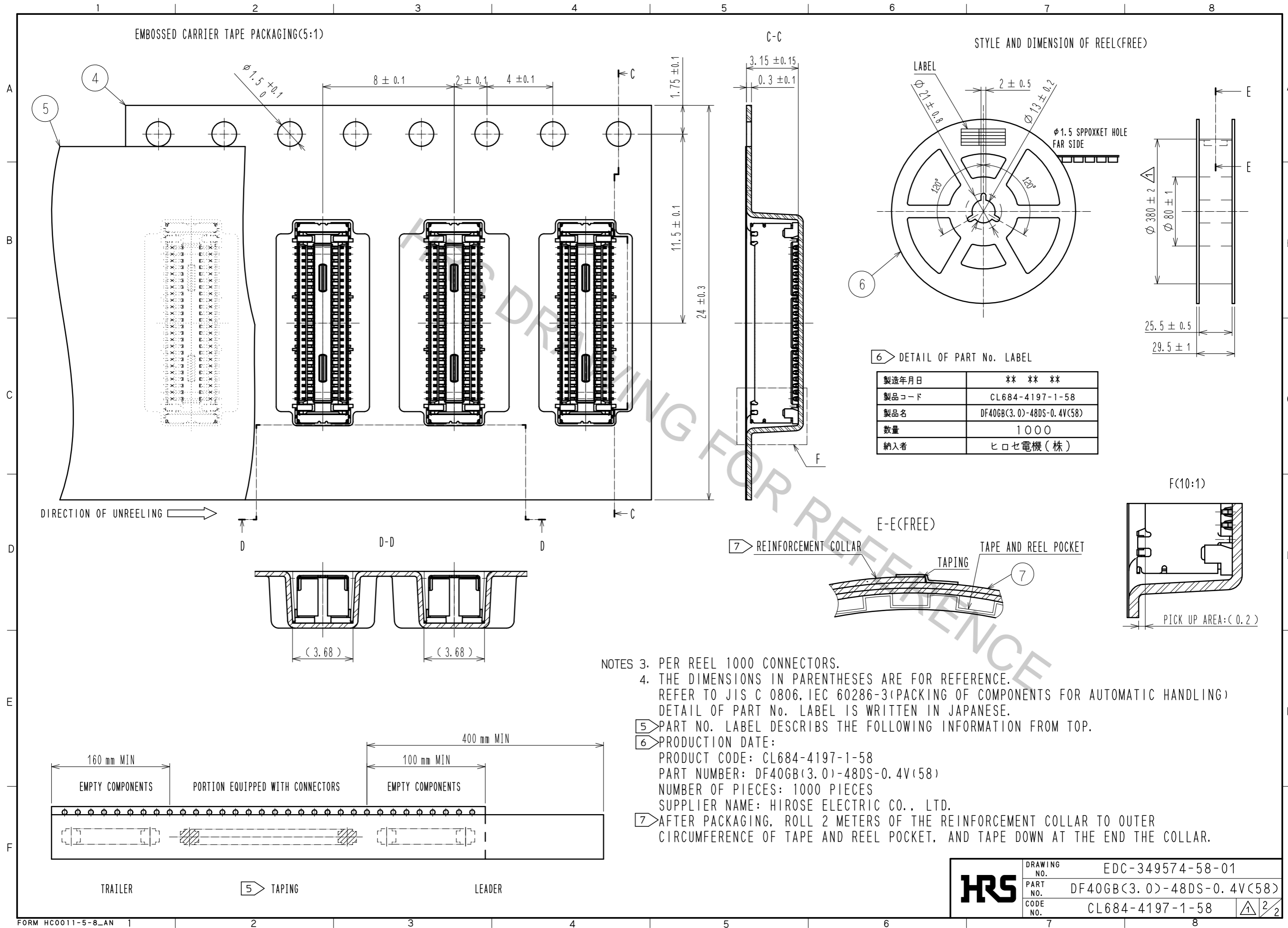
7	PS	CLEAR(REINFORCEMENT COLLAR)
6	PS	BLACK(PLASTIC REEL)
5	POLYESTER	CLEAR(COVER TAPE)
4	PS	CLEAR(EMBOSSED CARRIER TAPE)
3	PHOSPHOR BRONZE	CONTACT AREA: Au 0.05 μm MIN SMT LEAD: Au 0.05 μm MIN UNDERPLATING: NICKEL 1 μm MIN
2	PHOSPHOR BRONZE	CONTACT AREA: Au 0.05 μm MIN SMT LEAD: Au 0.05 μm MIN UNDERPLATING: NICKEL 1 μm MIN
1	LCP	BLACK, UL94V-0

NO.	MATERIAL	FINISH	REMARKS	NO.	MATERIAL	FINISH	REMARKS
7	PS			7	PS		
6	PS			6	PS		
5	POLYESTER			5	POLYESTER		
4	PS			4	PS		
3	PHOSPHOR BRONZE			3	PHOSPHOR BRONZE		
2	PHOSPHOR BRONZE			2	PHOSPHOR BRONZE		
1	LCP			1	LCP		

UNITS		SCALE	COUNT	DESCRIPTION OF REVISIONS	DESIGNED	CHECKED	DATE
mm		10 : 1	1	DIS-H-00000833	SH. HOSODA	TS. MIYAZAKI	15. 08. 20
APPROVED : MO. ISHIDA		15. 07. 01		DRAWING NO.		EDC-349574-58-01	
CHECKED : TS. MIYAZAKI		15. 07. 01		PART NO.		DF40GB(3.0)-48DS-0.4V(58)	
DESIGNED : SH. HOSODA		15. 07. 01		CODE NO.		CL684-4197-1-58	
DRAWN : KR. AJITO		15. 07. 01					

EMBOSSED CARRIER TAPE PACKAGING(5:1)

STYLE AND DIMENSION OF REEL(FREE)



6) DETAIL OF PART No. LABEL

製造年月日	** ** *
製品コード	CL684-4197-1-58
製品名	DF40GB(3.0)-48DS-0.4V(58)
数量	1000
納入者	ヒロセ電機(株)

- NOTES
- PER REEL 1000 CONNECTORS.
 - THE DIMENSIONS IN PARENTHESES ARE FOR REFERENCE. REFER TO JIS C 0806, IEC 60286-3(PACKING OF COMPONENTS FOR AUTOMATIC HANDLING) DETAIL OF PART No. LABEL IS WRITTEN IN JAPANESE.
 - PART No. LABEL DESCRIBES THE FOLLOWING INFORMATION FROM TOP.
 - PRODUCTION DATE:
 - PRODUCT CODE: CL684-4197-1-58
 - PART NUMBER: DF40GB(3.0)-48DS-0.4V(58)
 - NUMBER OF PIECES: 1000 PIECES
 - SUPPLIER NAME: HIROSE ELECTRIC CO., LTD.
 - AFTER PACKAGING, ROLL 2 METERS OF THE REINFORCEMENT COLLAR TO OUTER CIRCUMFERENCE OF TAPE AND REEL POCKET, AND TAPE DOWN AT THE END THE COLLAR.

HRS	DRAWING NO.	EDC-349574-58-01
	PART NO.	DF40GB(3.0)-48DS-0.4V(58)
	CODE NO.	CL684-4197-1-58
		$\frac{1}{2}$