

PART NUMBER	REV	FIRST USED	TERMINATOR	FEED TYPE	DESCRIPTION
1339748-1	A		BENCH & LEADMAKER	MECH POST FEED	HD-I APPLICATOR
7-1339748-1	A		BENCH & LEADMAKER	MECH POST FEED	-1 AND SPARE PARTS
7-1339748-7	A		-	-	SPARE PARTS KIT

CRIMP DATA STOCKO TERMINAL AMP CRIMP SPECS

CRIMP	SIZE	TYPE	RANGE
WIRE	2.54 [1.00 IN]	F	0.50-1.50mm ² or 18-16 AWG
INSUL	4.83 [1.90 IN]	F	1.30-3.50 [0.051-.138 IN]
WIRE STRIP LENGTH	APPL INSTRUCTION		
4.60-5.40 [1.81-.213 IN]	408-8323		

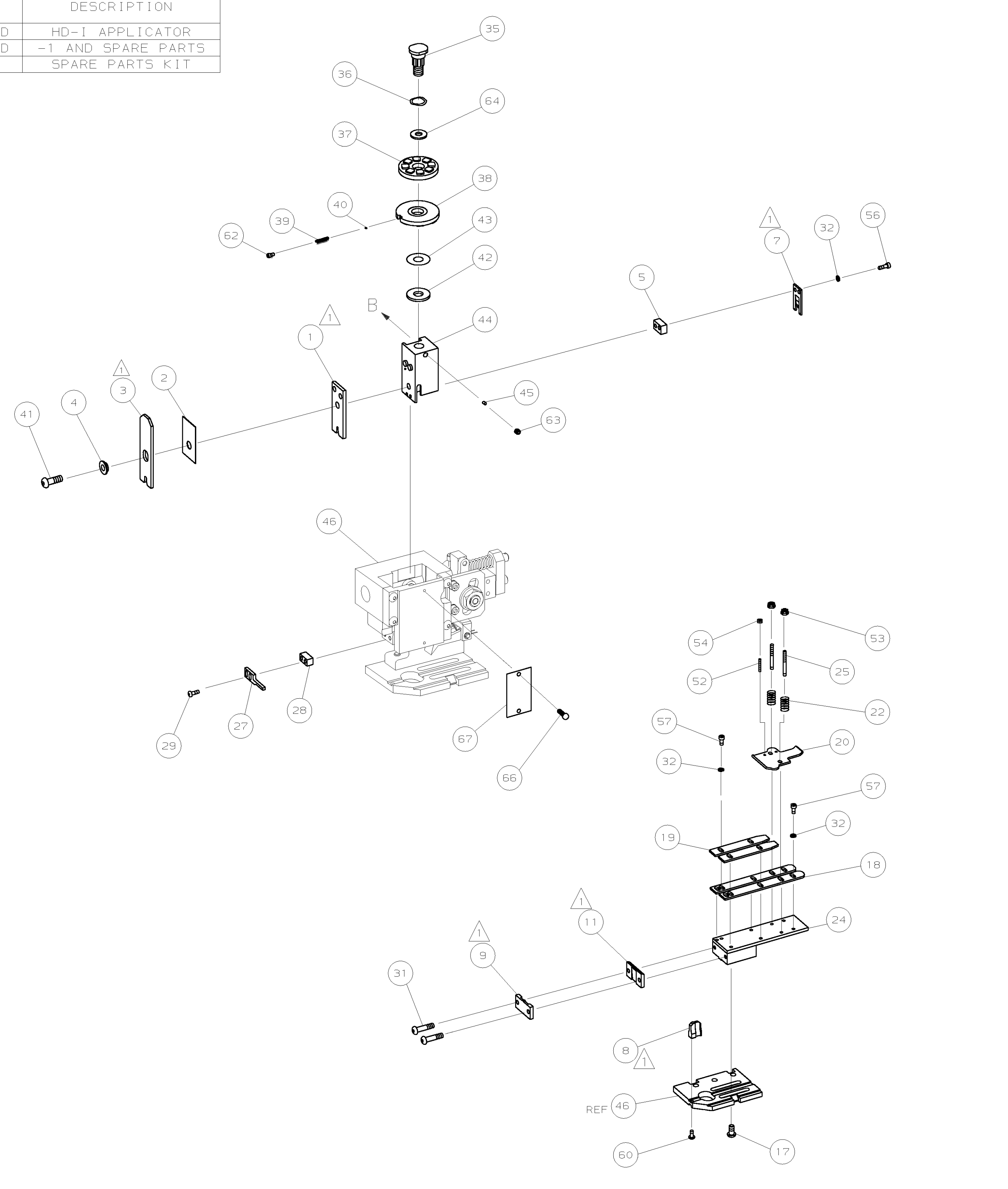
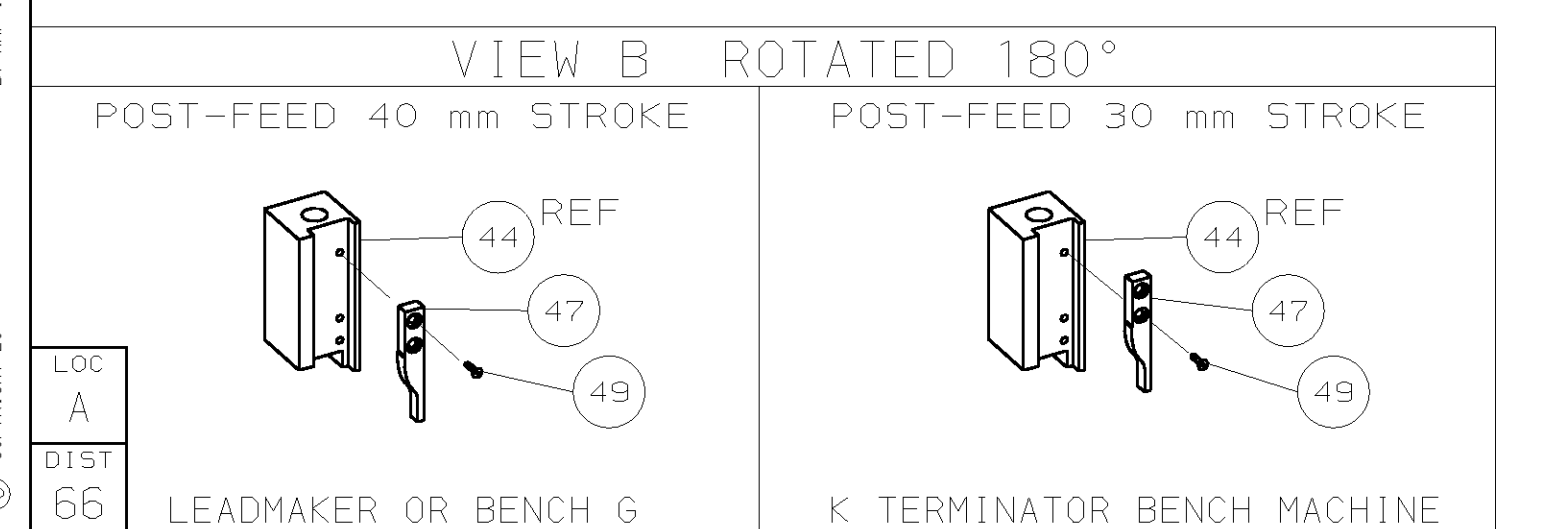
TERMINAL	FEED
APPL SPEC	18.80 [1.740 IN]

TERMINALS APPLIED

AMP PN	MFR PN			
1572588-1	RSB 7881 A 6-1.5	-	-	-
1572588-2	RSB 7881 A 5-1.5	-	-	-
1572588-3	RSB 7881 A 4-1.5	-	-	-
1572588-4	RSB 7881 A 3.5-1.5	-	-	-
1572588-5	RSB 7881 A 3-1.5	-	-	-

WIRE SIZE	CRIMP HEIGHT	PIN PN AND LENGTH [IN]
1.40mm ²	2.08 ±0.05 [0.082 ±0.002 IN]	5-354778-5 [1.2770]
1.00mm ²	1.96 ±0.05 [0.077 ±0.002 IN]	6-354778-7 [1.2830]
0.75mm ²	1.85 ±0.05 [0.073 ±0.002 IN]	7-354778-5 [1.2870]
0.50mm ²	1.75 ±0.05 [0.069 ±0.002 IN]	8-354778-3 [1.2910]

- 1. RECOMMENDED SPARE PARTS.
- 2. GREASE RAM, CAM, CAM FOLLOWER AND FEED ROD LIGHTLY.
- 3. LUBRICATE DAILY PER THE APPLICATOR INSTRUCTION SHEET SUPPLIED WITH THE APPLICATOR.
- 4. ALL CRIMP DATA CALCULATED BY TYCO ELECTRONICS UK LTD.
- 5. RANGE QUOTED IS THAT OF THE TERMINAL, NOT THE APPLICATOR.



QTY	REQD	PER ASSY	PART NO	DESCRIPTION	ITEM NO
-	1	1	1339748	PRINT, APPLICATOR LOG SHEET	73
-	1	1	1338705-2	DOCUMENTATION PACKAGE	71
					70
					69
					68
-	1	1	461264-1	PLATE, IDENTIFICATION	67
-	2	2	21017-2	SCR,DRIVE (#2X.19) ID PLATE	66
					65
-	1	1	986950-1	WASHER, FLAT PRECISION	64
-	1	1	3-18031-0	SCR,SKT SET (M6X6) RAM	63
-	1	1	18023-9	SCR,SKT CAP (M4X6) CP D5C	62
					61
-	1	1	18024-7	SCR,BHC (M4X10) ANVIL	60
					59
					58
-	6	6	18023-9	SCR,SHC (M4X6) STRIP GUIDE	57
-	2	2	1-18023-2	SCR,SHC (M4X12) SLUG BLADE	56
					55
-	2	2	18029-1	NUT, HEX (M3) DRAG	54
-	2	2	986965-1	NUT, HEX SL (M4) DRAG STUD	53
-	2	2	2-18032-2	SCR,SKT SET (M3X10) DRAG	52
					51
					50
-	1	1	18024-3	SCR,BHC (M3X10) CAM	49
					48
-	1	1	1338676-1	CAM, POST-FEED 30 & 40 mm ST	47
-	1	1	1338662-1	APPLICATOR, BASIC (SUBASSY)	46
-	1	1	690191-1	PLUG, NYLON	45
-	1	1	1320998-1	RAM	44
-	1	1	690125-1	WASHER, LAMINATED	43
-	1	1	690124-1	WASHER, RAM	42
-	1	1	2-18024-6	SCREW,BHC (M8X25) CRIMPER	41
-	1	1	23241-1	BALL, STEEL	40
-	1	1	2-22278-7	SPRING, COMPRESSION	39
-	1	1	1320922-1	DISC, INSULATION	38
-	1	1	354777-1	WIRE DISC, PLASTIC	37
-	1	1	22480-5	WASHER, SPRING	36
-	1	1	690212-1	POST, RAM	35
					34
					33
-	8	8	18025-2	WASHER, LOCK (M4) SHEAR BL	32
-	2	2	1-18024-0	SCR,BHC (M4X20) SHEAR PL	31
					30
-	2	2	18024-8	SCR,BHC (M4X12) STRIPPER	29
-	1	1	3-690451-2	SPACER, STRIPPER	28
-	1	1	240639-1	STRIPPER	27
					26
-	2	2	1320906-1	DRAG, STUD	25
-	1	1	1320995-1	PLATE, STRIP GUIDE	24
					23
-	2	2	4-22281-1	SPRING, DRAG	22
					21
-	1	1	1338665-1	DRAG, STOCK	20
-	2	2	1338664-1	GUIDE, UPPER STRIP	19
-	2	2	1338663-1	GUIDE, LOWER STRIP	18
-	4	4	1-18024-8	SCR,BHC (M6X12) STRIP 6D PL	17
					16
					15
					14
					13
					12
1	1	1	240644-1	PLATE, REAR SHEAR	11
					10
1	1	1	690482-5	PLATE, FRONT SHEAR	9
1	2	1	1-1333218-8	ANVIL	8
1	1	1	690474-5	BLADE, SLUG	7
					6
-	1	1	2-240641-9	SPACER, SLUG BLADE	5
-	1	1	238009-1	SPACER, BLOCK CRIMPER	4
1	2	1	9-456134-6	CRIMPER, INSULATION	3
-	1	1	455888-5	SPACER, CRIMPER	2
1	2	1	3-456407-2	CRIMPER, WIRE	1

REVISION OF EACH ASSY NO (WHEN BLANK, USE DWG REVISION)

QTY	REQD	PER ASSY	PARTS LIST
			MATL HT TR FIN

DIMENSIONS: mm [INCHES] MATL HT TR FIN
DO NOT SCALE PRINT.
TOLERANCES UNLESS OTHERWISE SPECIFIED:
1 PLC DEC ±
2 PLC DEC ±
3 PLC DEC ±
ANGLES ±
SURF TEXTURE: ✓
REMOVE BURRS, BREAK SHARP EDGES RO.38 MAX

DR	15SEP04	APP	15SEP04	F.BACKHURST	AMP Tyco Electronics Harrisburg, PA 17105-3608
CHK		REL	18OCT04	L.LOFTHOUSE	

NAME: END FEED HD-I APPLICATOR MACHINE REF: HD-I APPL

SCALE: DWG NO: 1339748 SHEET 1 OF 1 REV A

CASE CODE: 00779 CUSTOMER AND ASSEMBLY DRAWING RESTRICTED TO

THIS DRAWING IS A CONTROLLED DOCUMENT.

LAYOUT L1339748 SET UP GAGE 458638-3

THIS DRAWING IS UNRELEASED. RELEASED FOR PUBLICATION BY AMP INCORPORATED. ALL RIGHTS RESERVED.