

SCALA NON DIMENSIONATA
(DO NOT SCALE)
DIMENSIONI IN
DIMENSIONS IN

METRIC

PROIEZIONE EUROPEA
(EUROPEAN PROJECTION)

*N°1 SEMIGUSCIA MAT. ABS COLORE NERO
(HALF SHELL) (ABS, BLACK)*

*N°1 GRANO M4
MAT. ACC. ZINCATO (PUSHING SCREW)
(ZINC PLTD STEEL)*

*TAPPO PORTA GRANO N°1
MAT. POLIAMMIDE 6/6 NERO
(SCREW HOLDER) (PA BLACK)*

*FORO ϕ 12 PER UCIITA DIRITTA
(RIGHT CABLE OUTLET)*

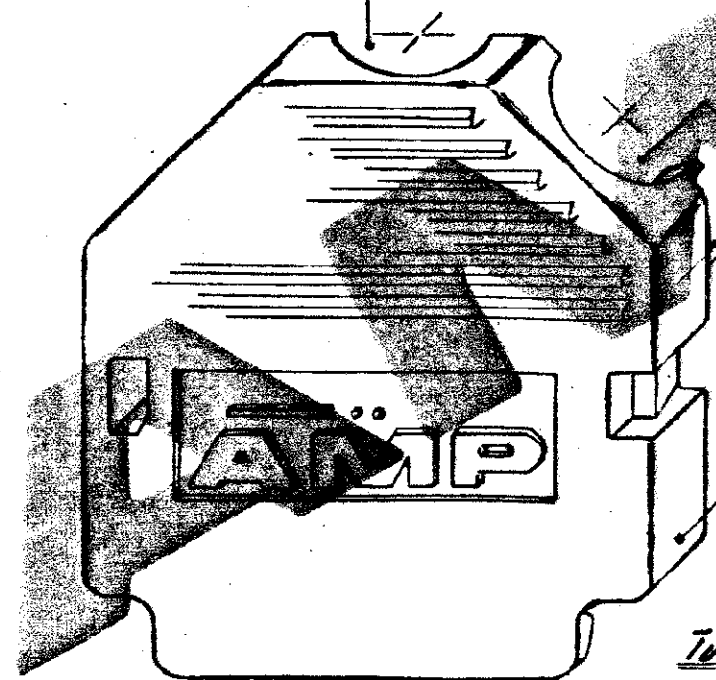
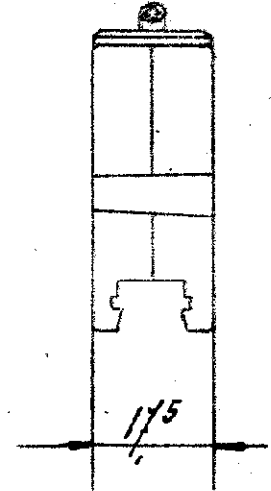
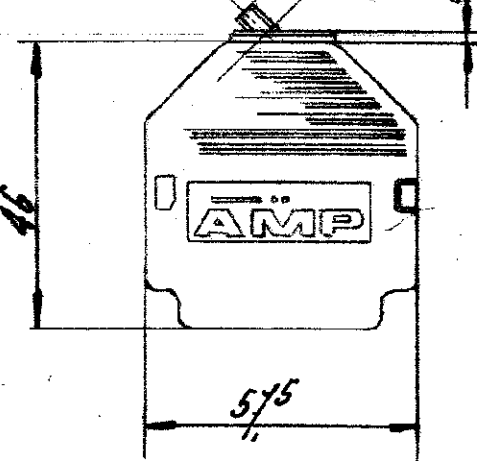
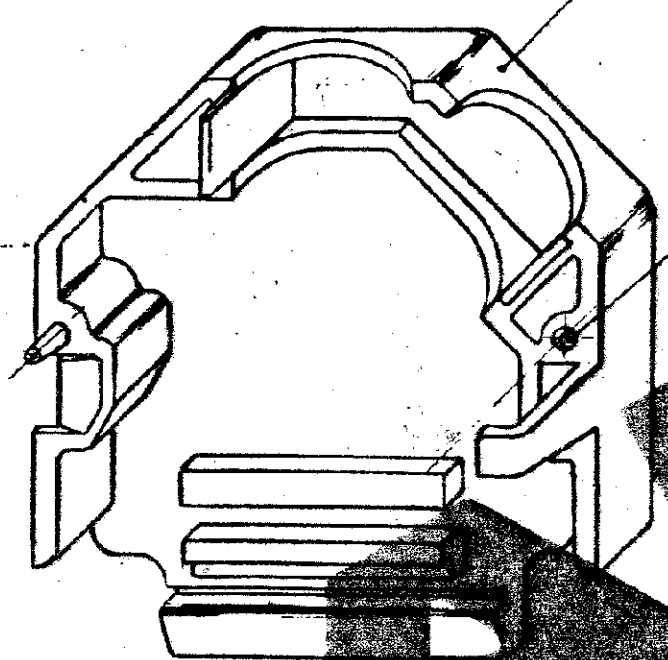
*N°1 SERRATURA MAT. ABS COLORE NERO
(CABLE CLAMP) (ABS, BLACK)*

*FORO ϕ 12 PER UCIITA 45°
(45° CABLE OUTLET)*

*N°1 SEMIGUSCIA MAT. ABS COLORE NERO
(HALF SHELL) (ABS, BLACK)*

*Tutti i particolari che compongono il KIT
saranno forniti scelti non assemblati
contenuti in apposite sacchette di plastica*

*THE KIT IS COMPOSED OF NOT ASSEMBLED
ITEMS PACKED IN PLASTIC BAG.*



REV.	REV. LIN.	REVISIONE (REVISION RECORD)	DIS. (DR.)	DATA (DATE)
3		Revised		5/84
2		REVISED		5/84
1		REVISED		5/84

FINITURA / COLORE (FINISH / COLOUR)	MATERIALE (MATERIAL)	NUMERO (PART NUMBER)
CUSTOMER DWG. FOR REFERENCE ONLY		DISEGNO PER CLIENTE SOLO PER RIFERIMENTO
-THIS DRAWING IS UNPUBLISHED-		RELEASE FOR PUBLICATION July 27 1984
© COPYRIGHT 1984 BY AMP INCORPORATED, HARRISBURG, PA ALL INTERNATIONAL RIGHT RESERVED AMP PRODUCTS MAY BE COVERED BY U.S. AND FOREIGN PATENT AND/OR PATENT PENDING		
TOLLERANZE: SE NON DIVERSAMENTE SPECIFICATO (TOLERANCES UNLESS OTHERWISE SPECIFIED)	DIAM. ISOLANTE (INS. DIA. RANGE)	RANGO FILI (WIRE RANGE)
± 0,3		SCALA (SCALE)
ANGOLI (ANGLES) ± 2°	AMP AMP ITALIA S.p.A. Corso F.lli Cervi, 15 COLLEGNO (TORINO)	
DIS. (DR.)	DESCRIZIONE (DESCRIPTION) SHELL AND CABLE CLAMP FOR HA20 C.O.S.I. CONN.3/ PAI KIT.	
CORR. (CHK)	LOC. (LOC.)	NUMERO (DWG NO.)
APP. (APP.)	IA3	C-182668-1
	REV. (REV.)	FORNITORE (SUPPLIER)
	3	1 (OF) 1

DISTRIBUZIONE (PRINT DIST.)