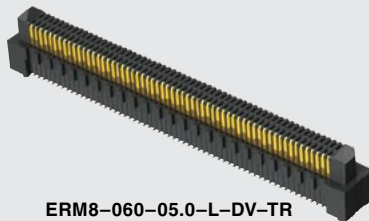


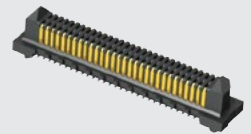
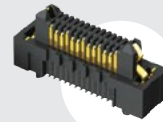


**EDGE RATE**  
CONTACT

ERM8-013-05.0-S-DV-DS-L-TR



ERM8-060-05.0-L-DV-TR



ERM8-030-02.0-S-DV-TR

**ERM8 SERIES**

**(0.80 mm) .0315"**

# RUGGED HIGH-SPEED HEADER

## SPECIFICATIONS

For complete specifications and recommended PCB layouts see [www.samtec.com?ERM8](http://www.samtec.com?ERM8)

**Insulator Material:**

Black LCP

**Terminal Material:**

Phosphor Bronze

**Plating:**

Au or Sn over

50 μm (1.27 μm) Ni

**Current Rating:**

2.2 A per pin

(1 pin powered per row)

**Operating Temp Range:**

-55 °C to +125 °C

**Voltage Rating:**

225 VAC / 318 VDC

**RoHS Compliant:**

Yes

**Board Mates:**

ERF8

**Cable Mates:**

ERCD, ERDP

MATED HEIGHT*			
ERM8 LEAD STYLE	ERF8 LEAD STYLE		
	-05.0	-07.0	
-02.0	(7.00) .276	(9.00) .354	
-05.0	(10.00) .394	(12.00) .472	
-08.0	(13.00) .512	(15.00) .591	
-09.0	(14.00) .551	(16.00) .629	

\*Processing conditions will affect mated height.

## HIGH-SPEED CHANNEL PERFORMANCE

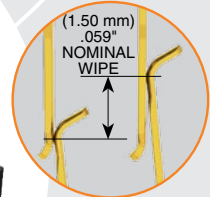
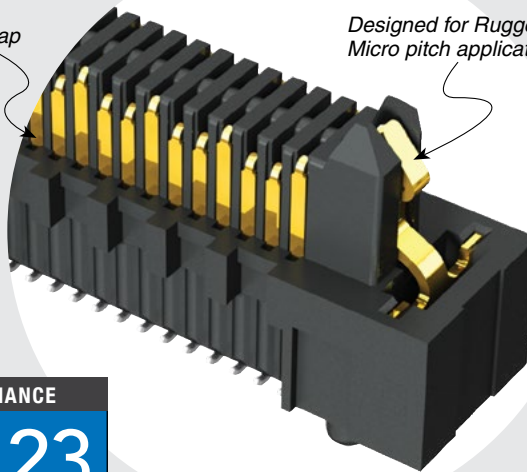
ERM8/ERF8 @ 7 mm Mated Stack Height

Rating based on Samtec reference channel. For full SI performance data visit [Samtec.com](http://Samtec.com) or contact [SIG@samtec.com](mailto:SIG@samtec.com)

**23**  
Gbps

Hot Swap option

Designed for Rugged Micro pitch applications



## PROCESSING

**Lead-Free Solderable:**

Yes

**SMT Lead Coplanarity:**

(0.10 mm) .004" max (005-030)

(0.12 mm) .005" max (040-060)

(0.15 mm) .006" max (070-100)

## RECOGNITIONS

For complete scope of recognitions see [www.samtec.com/quality](http://www.samtec.com/quality)



## PROTOCOLS

- 100 GbE
- PCI Express®

## APPLICATIONS

STANDARD	POS.	PART NOS.	SERIES
NEXUS5001™.org	11	ASP-137968-01	ERM8-DV
POWER.org™	17	ASP-137972-01	ERM8-DV
ARM/HSSTP	20	ASP-130365-01	ERM8-DV
NEXUS5001™.org	23	ASP-130366-01	ERM8-DV
POWER.org™	35	ASP-135020-01	ERM8-DV

LEAD STYLE	A	B
-02.0	(1.61) .063	(5.97) .235
-05.0	(4.61) .181	(8.91) .351
-08.0	(7.61) .300	(11.91) .469
-09.0	(8.61) .339	(12.91) .508

**Notes:**

Patented

Some lengths, styles and options are non-standard, non-returnable.

ERM8	POSITIONS PER ROW	LEAD STYLE	PLATING OPTION	DV	OTHER OPTION	TR
	-005, -010, -011, -013, -020, -025, -030, -035, -040, -049, -050, -060, -070, -075, -100 (Available with -09.0 lead style only)	Specify LEAD STYLE from chart	-L = 10 μm (0.25 μm) Gold on contact, Matte Tin on tail -S = 30 μm (0.76 μm) Gold on contact, Matte Tin on tail	-DS = Differential Pair (-05.0 lead style only) (-010, -013, -025, -049 Positions only) -K = (4.00 mm) .157" DIA Polyimide Film Pick & Place Pad -L = Latching (-05.0 lead styles only) (Not available with -EGP & -EGPS options) -EGP = Extended Guide Post (-05.0 lead style only) (Not available with -L option) -EGPS = Extended Guide Post Shield (-05.0 lead style only) (-010, -020, -025, -030 Positions only) (Not available with -L option) -DSP = Differential Pair + Extended Guide Post (-05.0 lead styles only) (-013 & -025 Positions only) -DSS = Differential Pair + Extended Guide Post Shield (-05.0 lead styles only) (-025 positions only)	-TR = Tape & Reel Packaging	

Due to technical progress, all designs, specifications and components are subject to change without notice.

[WWW.SAMTEC.COM](http://WWW.SAMTEC.COM)

All parts within this catalog are built to Samtec's specifications. Customer specific requirements must be approved by Samtec and identified in a Samtec customer-specific drawing to apply.