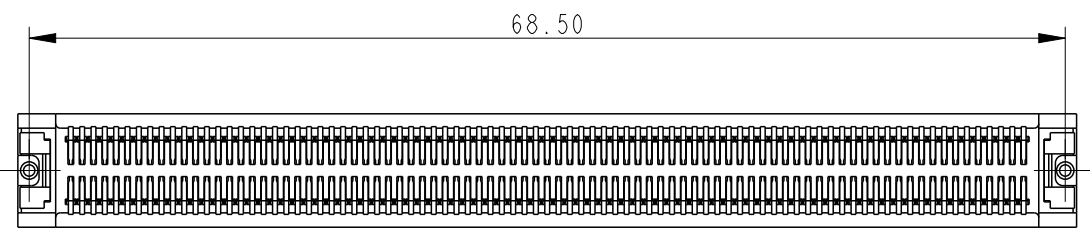
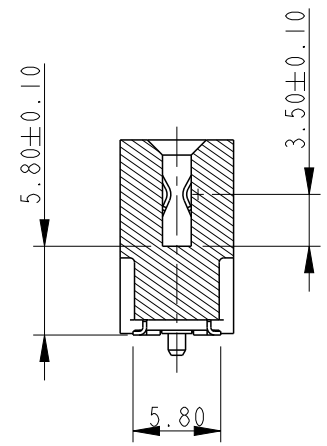
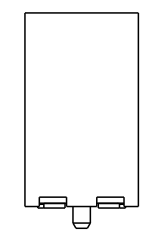
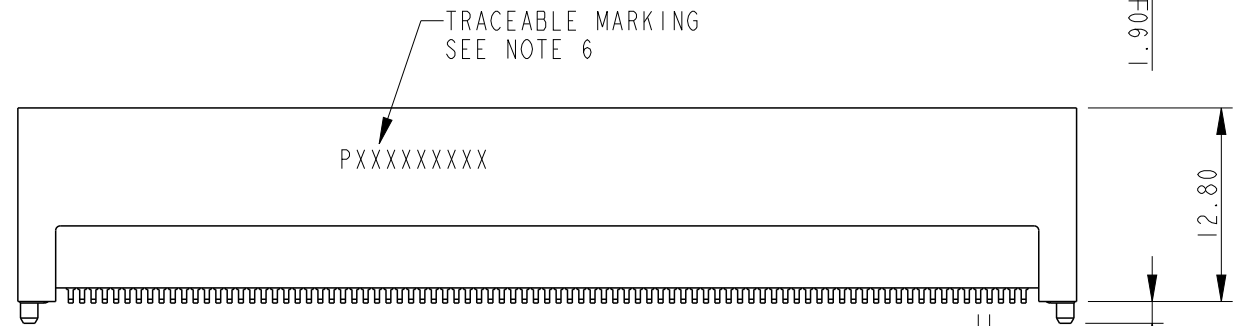
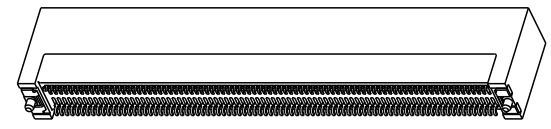
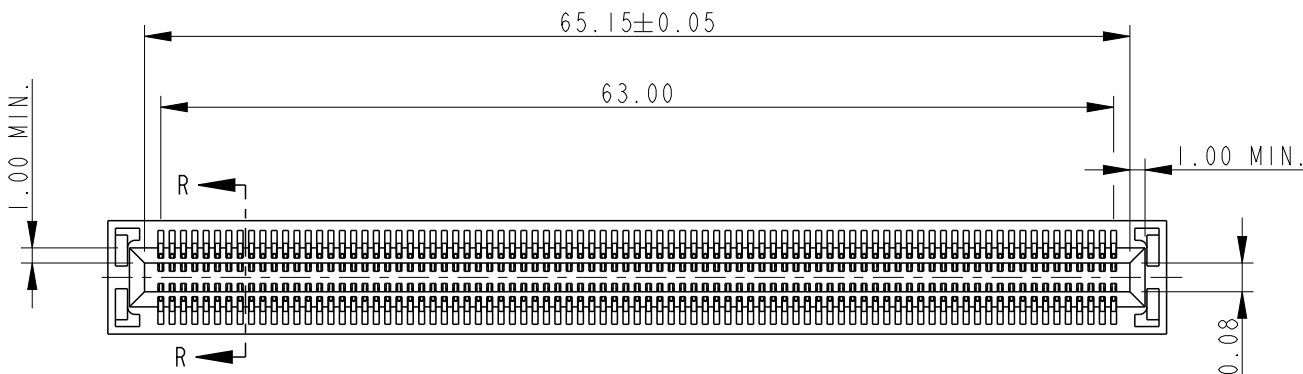


PART NUMBER 10058835-1000LF



spec ref	*	dr	w wcadmin	2006/08/30	projection	MM	size	A4	scale	1:1
tolerance std	TOLERANCES UNLESS OTHERWISE SPECIFIED	eng	Wei Yang	2014/08/27			←→	ecn no	ELX-DG-18450-1	
ASME Y14.5		chr	Terry Qiu	2014/09/17		product family		rel level	Released	
-		appr	Pei-Ming Zheng	2014/09/19	title		dwg no	10058835		rev
surface	linear	0.X	±0.3		cat. no.	Product - Customer Drw	sheet 1 of 6			
ASME Y14.5	angular	0.XX	±0.20							
		0.XXX	±0.100							
		0°	±2°	www.fci.com	*	STATUS:Released		Printed: Sep 19, 2014		

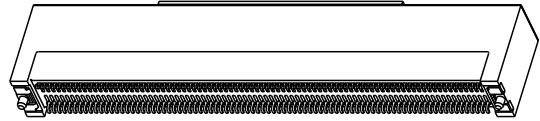
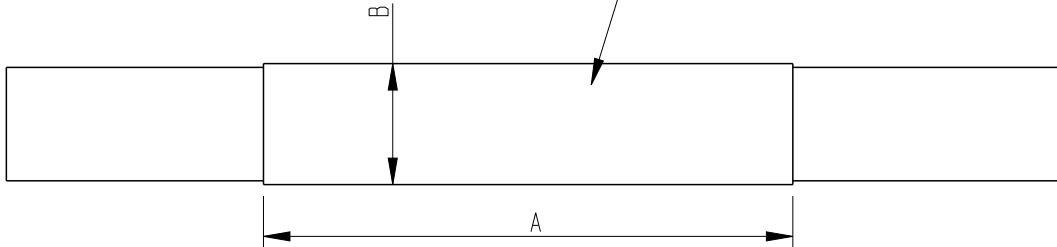
PrdE File - REV C - 2009-06-09

Copyright FCI.

PART NUMBER
10058835-1001LF
10058835-1003LF

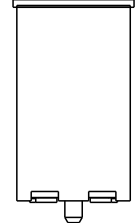
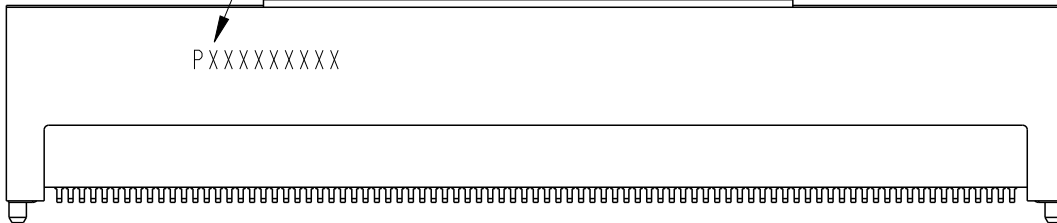


MYLAR FOR PLACE AND PICK
THICKNESS 0.12MM



TRACEABLE MARKING
SEE NOTE 6

PXXXXXXXXX



PART NUMBER	DIM "A"±0.5	DIM "B"±0.3
10058835-1001LF	35	8.0
10058835-1003LF	22	7.0

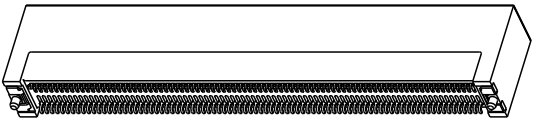
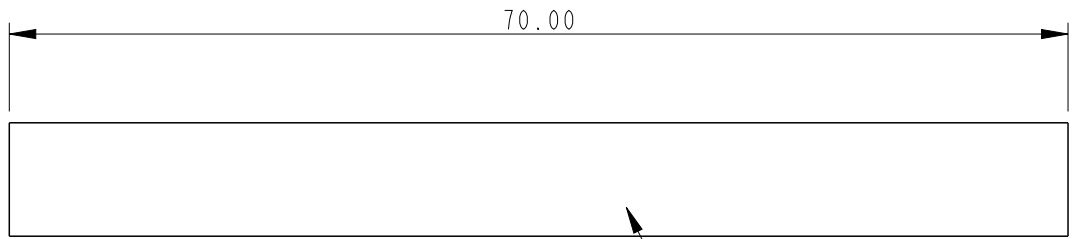
NOTE: ALL THE CONNECTOR DIMENSIONS REFER TO PART NUMBER 10058835-1000LF

spec ref	*	dr	w wadmin	2006/08/30	projection	MM	size	A4	scale	1:1		
tolerance std	TOLERANCES UNLESS OTHERWISE SPECIFIED	eng	Wei Yang	2014/08/27			ecn no	ELX-DG-18450-1				
ASME Y14.5		chr	Terry Qiu	2014/09/17				rel level	Released			
-		appr	Pei-Ming Zheng	2014/09/19					product family			
surface	linear	0.X	±0.3		title	SMT TYPE ASS'Y	dwg no	10058835			rev	
ASME Y14.5		0.XX	±0.20					www.fci.com	cat. no.	Product - Customer Drw		sheet 2 of 6
	0.XXX	±0.100										
	angular	0°	±2°									

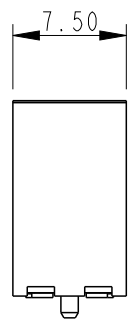
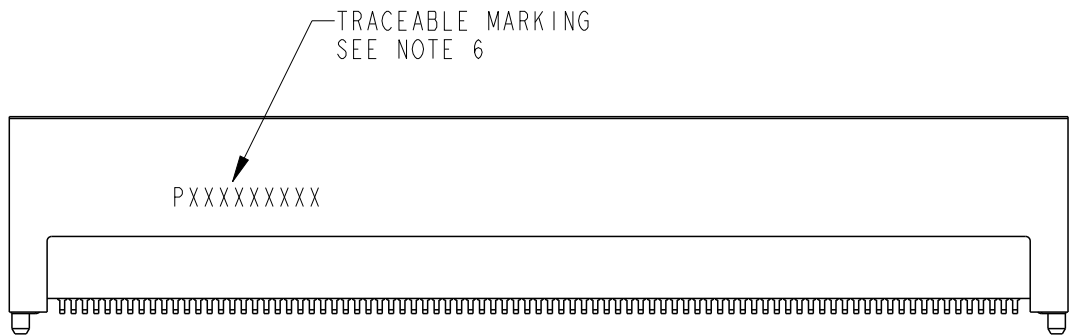


Copyright FCI.

PART NUMBER 10058835-1002LF



MYLAR FOR PLACE AND PICK THICKNESS 0.12MM



NOTE: ALL THE CONNECTOR DIMENSIONS REFER TO PART NUMBER 10058835-1000LF

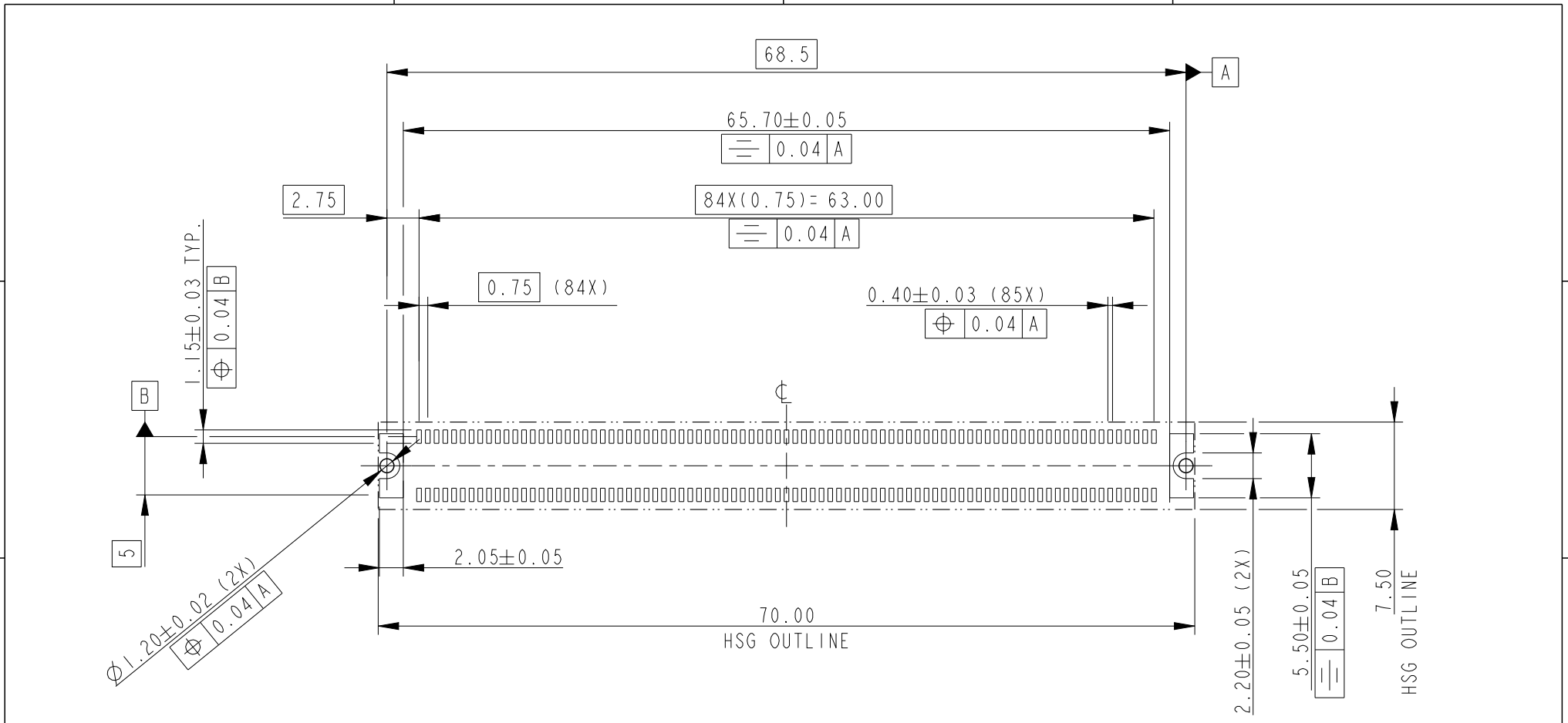


spec ref *		dr w wcadmin		2006/08/30		projection		size A4		scale 1:1	
tolerance std ASME Y14.5		TOLERANCES UNLESS OTHERWISE SPECIFIED		eng Wei Yang		2014/08/27		MM		ecn no ELX-DG-18450-1	
				chr Terry Qiu		2014/09/17		←→		rel level Released	
				appr Pei-Ming Zheng		2014/09/19		product family		rev H	
surface ASME Y14.5		linear		0.X ±0.3		FCI		title SMT TYPE ASS'Y		dwg no 10058835	
				0.XX ±0.20		www.fci.com		cat. no. *		Product - Customer Drw	
				0.XXX ±0.100						sheet 3 of 6	
		angular		0° ±2°							

Print File - REV C - 2009-06-09



Copyright FCI.



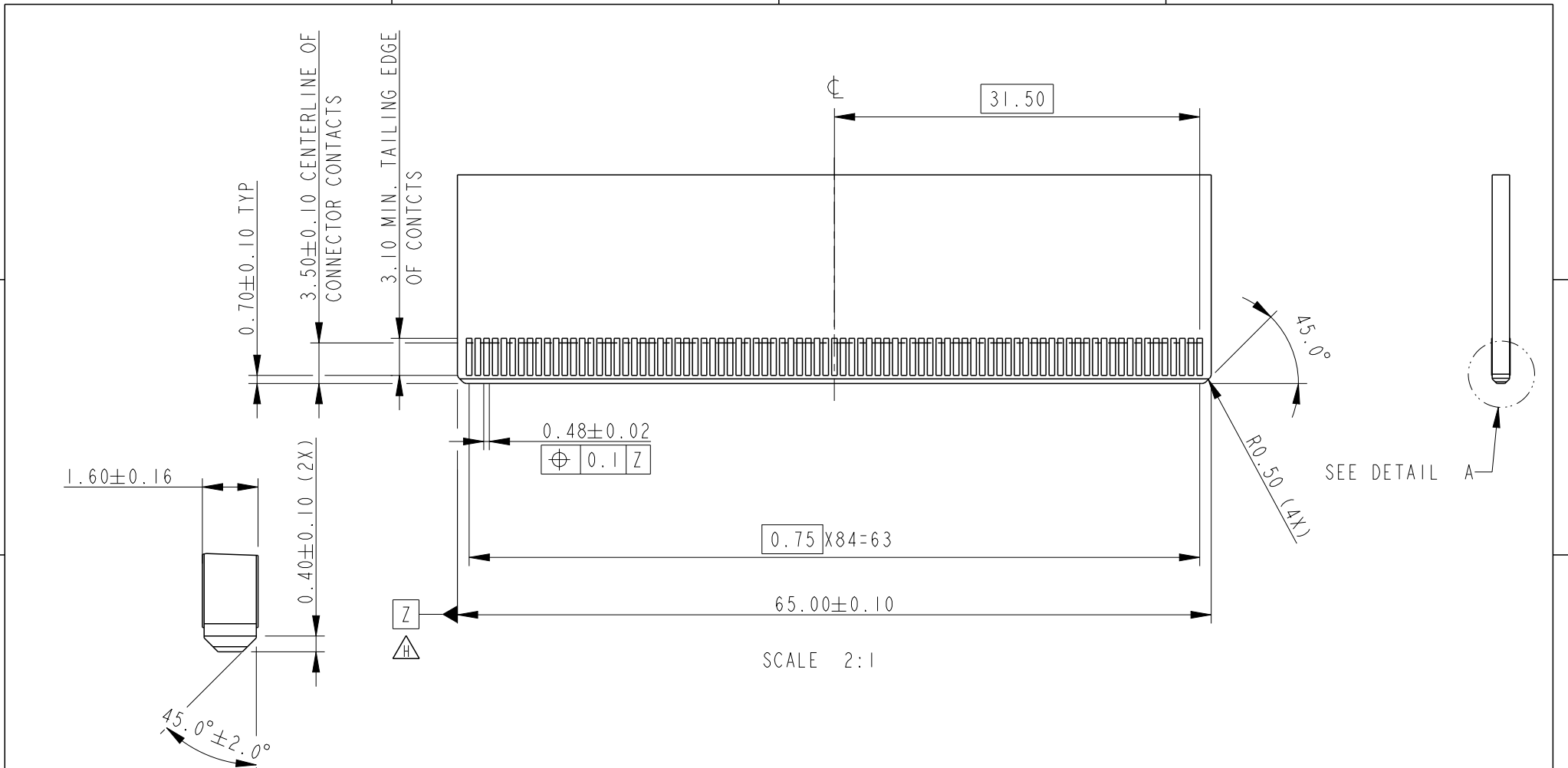
RECOMMENDED PCB LAYOUT
(SEE PICMG MICROTCA BASE SPECIFICATION FOR DETAIL)

spec ref	*	dr	w wcadmin	2006/08/30	projection	MM ←→	size	A4	scale	1:1	
tolerance std	TOLERANCES UNLESS OTHERWISE SPECIFIED	eng	Wei Yang	2014/08/27			ecn no	ELX-DG-18450-1			
ASME Y14.5		chr	Terry Qiu	2014/09/17				rel level	Released		
-		appr	Pei-Ming Zheng	2014/09/19		product family					
surface	✓	linear	0.X	±0.3		title	SMT TYPE ASS'Y	dwg no	10058835	rev	H
ASME Y14.5			0.XX	±0.20							
		angular	0°	±2°	www.fci.com	cat. no.	*	Product - Customer Drw	sheet 4 of 6		

PrdE File - REV C - 2009-06-09



Copyright FCI.



DETAIL A
SCALE 6:1

RECOMMENDED MODULE LAYOUT
(SEE PICMG ADVANCED MEZZANINE CRAD BASE SPECIFICATION FOR DETAIL)

SCALE 2:1

spec ref	*	dr	w wcadmin	2006/08/30	projection	MM	size	A4	scale	1:1			
tolerance std	ASME Y14.5	eng	Wei Yang	2014/08/27			ecn no		ELX-DG-18450-1				
TOLERANCES UNLESS OTHERWISE SPECIFIED		chr	Terry Qiu	2014/09/17			product family		3G10		rel level	Released	
surface	✓	appr	Pei-Ming Zheng	2014/09/19	product family		3G10		rel level		Released		
ASME Y14.5	linear	0.X	±0.3		title		SMT TYPE ASS'Y		dwg no		10058835	rev	H
		0.XX	±0.20		cat. no.		Product - Customer Drw		sheet 5 of 6				
		0.XXX	±0.100		www.fci.com								
ASME Y14.5	angular	0°	±2°										

Print File - REV C - 2009-06-09

NOTES:

1. MATERIAL:

HOUSING: HIGH TEMPERATURE, GLASS FILLED UL94V-0 RATED.

TERMINAL: COPPER ALLOY

PLATING: 1.27um NICKEL UNDERPLATE ALL OVER

CONTACT AREA PLATING - SEE PRODUCT NUMBER CODE

SOLDER TAIL: MAT TIN - 2.54um MIN.

SEE PRODUCT NUMBER CODE

2. PRODUCT SPECIFICATION: GS-12-362

3. PACKING SPECIFICATION: GS-14-1047

4. RoHS COMPATIBLE PRODUCT SPECIFICATIONS

a-PLATING:

- "LF" MEANS THE PRODUCT IS LEAD-FREE, 2um MINIMUM MATTE TIN OVER 1.27um MINIMUM NICKEL UNDERPLATE.

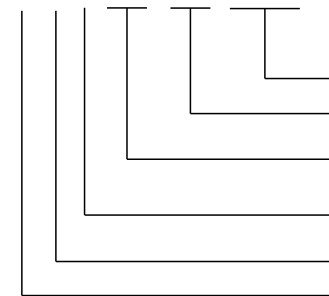
b-MANUFACTURING PROCESS COMPATIBILITY

- THE HOUSING WILL WITHSTAND EXPOSURE TO 260°C±5°C SOLDER BATH TEMPERATURE FOR 5 SECONDS IN A REFLOW SOLDER APPLICATION WITH A 1.6mm MIN THICK CIRCUIT BOARD.

△ 5. A △ SYMBOL WILL BE NEXT TO ANY DIMENSION, VIEW, OR NOTE WHICH HAS BEEN MODIFIED WITH THE CURRENT DRAWING REVISION.

6. MARKING INFORMATION:

P X X X X X X X X



PRODUCTION LINE CODE

DATE CODE THROUGH 01 TO 31

WEEK NUMBER 01 THROUGH 53

YEAR CODE:
MOST RIGHT OF DIGIT OF PRODUCTION.
(e.g 2007=7)

MANUFACTURE SITE; 2 FOR DONGGUAN

SOURCE, P FOR CHINA

HEIGHT OF THE MAKING TEXT: IMM MIN

PRODUCT NUMBER CODE
10058835 - X X X X L F

HOUSING COLOR OPTIONS
1-BLACK
2-WHITE

PEGS OPTIONS
0-PLASTIC PEGS

TERMINAL PLATING OPTIONS
0-0.76um Au CONTACT AREA

LEAD FREE

RESERVE

- 0-----WITHOUT MYLAR
- 1-----WITH MYLAR(35X8.0)
- 2-----WITH MYLAR(70X7.5)
- △ 3-----WITH MYLAR(22X7.0)



Copyright FCI.

spec ref *		dr w cadmin		2006/08/30	projection 	MM ←→	size A4	scale 1:1	
tolerance std ASME Y14.5		eng Wei Yang		2014/08/27			ecn no ELX-DG-18450-1		
TOLERANCES UNLESS OTHERWISE SPECIFIED		chr Terry Qiu		2014/09/17			rel level Released		
surface ✓		appr Pei-Ming Zheng		2014/09/19	product family 3G10		rev		
ASME Y14.5		linear	0.X ±0.3	FCI www.fci.com		title SMT TYPE ASS'Y MICRO TCA		dwg no 10058835	
			0.XX ±0.20						
			0.XXX ±0.100						
		angular	0° ±2°	cat. no. *		Product - Customer Drw		sheet 6 of 6	