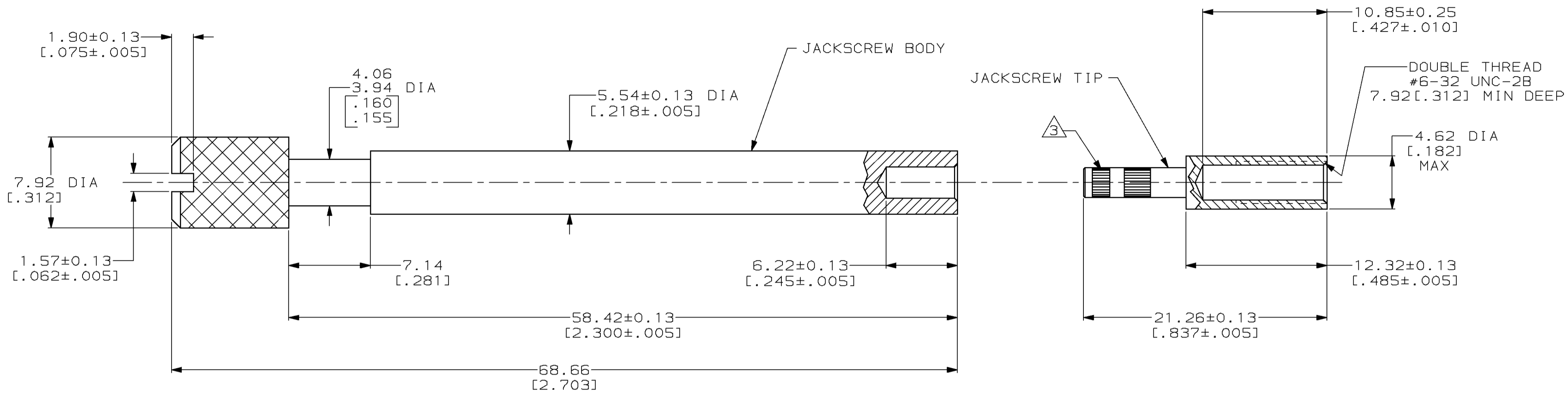
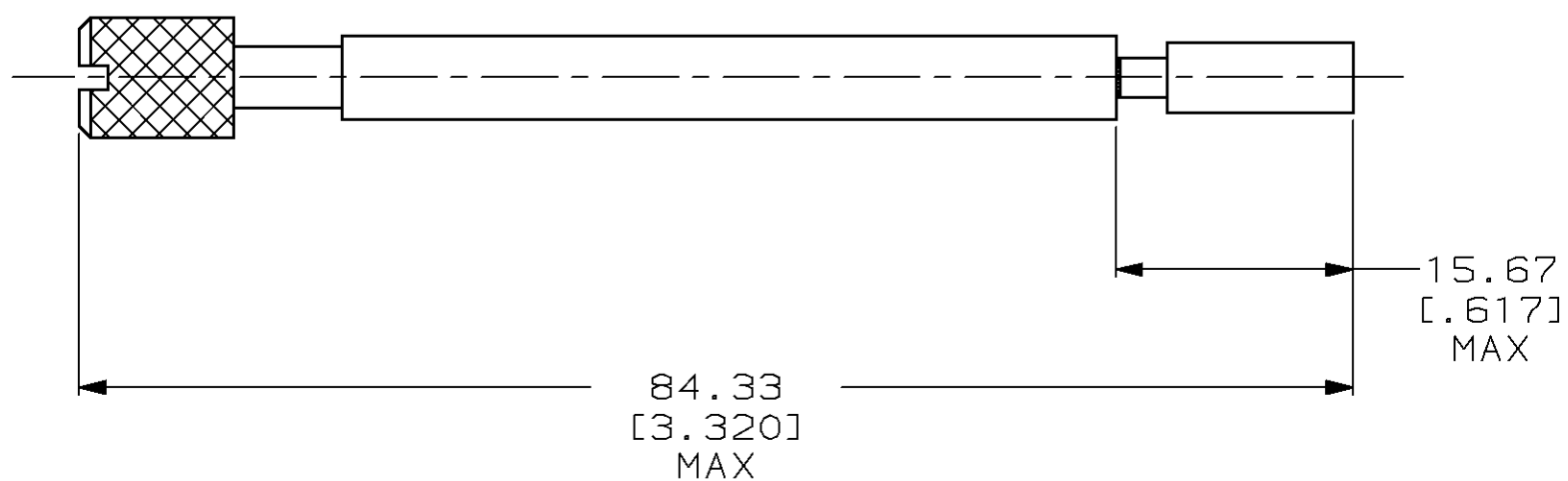


THIS DRAWING IS UNPUBLISHED. RELEASED FOR PUBLICATION  
 BY AMP INCORPORATED. ALL RIGHTS RESERVED.

LOC	DIST	REVISIONS			
P	LTR	DESCRIPTION	DATE	DWN	APVD
FT	8	F	REDRAWN W/O CHANGE PER EC 0020-289-96	08 AUG 96	-



- ① JACKSCREW BODY: BRASS.  
JACKSCREW TIP: STAINLESS STEEL.
- ② JACKSCREW BODY: 5.08µm [0.000200] MIN NICKEL.
- ③ TIP KNURLED 2 PLC FOR PRESS FIT.



ASSEMBLED VIEW

THIS DRAWING IS A CONTROLLED DOCUMENT.		DWN B. CARBO	08 AUG 96	AMP Incorporated Harrisburg, PA 17105-3608	
DIMENSIONS: mm [INCHES]		CHK R. STONE	04 JUN 97	NAME JACKSCREW KIT, UNASSEMBLED, FEMALE, LONG, M SERIES	
TOLERANCES UNLESS OTHERWISE SPECIFIED:		APVD G. STEINHAUER	02 SEP 97	PRODUCT SPEC	-
0 PLC ±-		APPLICATION SPEC		SIZE	A2
1 PLC ±-		WEIGHT		CAGE CODE	00779
2 PLC ±0.38 [0.015]		CUSTOMER DRAWING		DRAWING NO	C-205269
3 PLC ±-		SCALE		SHEET	1 OF 1
4 PLC ±-		REV		REV	F
ANGLES ±-		SCALE		SHEET	1 OF 1
FINISH		SCALE		SHEET	1 OF 1

205269-1  
PART NUMBER