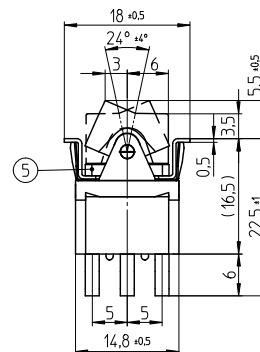
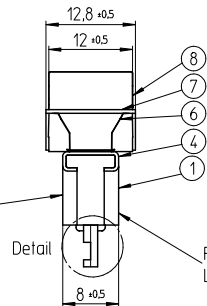
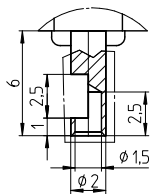


Detail
Scale 5:1

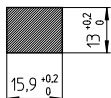


Date Code Printing
last digit of year
A-L = January to December
Day

Detail
Printing of
Logo and Rating

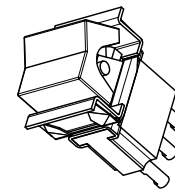
ALCO	Model No.
FLD2904	
6A AC 250V	Rating
ON - ON	SW. Funct.

Panel Cutout
thickness 1 to 2.5mm

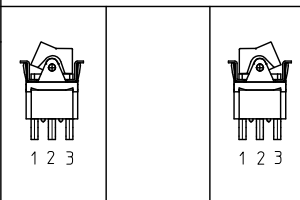


Specifications

TE PN	Part	Rating	Initial Contact Resistance	Insulation Resistance	Dielectric Strength	Endurance
2-6437630-9	FLD2904	AC 125V 6A AC 250V 6A	MAX 10 milliohms at DC 2 ~ 4V 1A	MIN 1000 M Ohms at DC 500V	AC 1kV/1min (AC 1.2kV/1sec)	electrically 50.000 cycles at 20 cycles/minutes (rated load resistive) mechanically 100.000 cycles at 20 cycles/minutes



Function Chart



TE PN	Button	Part	Terminals 1 and 2	Terminals 2 and 3
2-6437630-9	black	FLD2904	ON	ON

Materials Chart

1	Case	Polyester Resin	Black
2	Common	C3602BD	Ep-Cu/Ni 3Au F b
3	Fixed contact	C3602BD+Ag	Ep-Cu/Ni 3Au F b
4	Frame	SUS	
5	Mounting Sleeve	C3602BD	Ep-Cu/Ni 3 b
6	Leaf spring	SUS	
7	Plate	SUS	
8	Button	Nylon Resin	

PART NO:	PART NAME:	MATERIAL/SURFACE:	OPTIONAL DESCRIPTION
PART LIST			
TOLERANCES UNLESS OTHERWISE SPECIFIED ACCORDING TO ISO 8015 and ISO 2768-1			
DIMENSIONS: mm			
test dimen. / Prüfmaß () , auxiliary dimen. / Hilfsmaß () , theor. dimen. / theor. Maß () , production control dimen. / Fertigungskontrollmaß () , dimen. for measure technology / messtechn. rel. Maß () [,]			
DRAWER		DSE	
CHECKED		03.01.2007 SA008712	
APPROVED			
ECR-NO:	DATE	NAME	INFO

SCALE:	NAME:	DWG NO:
		1968518
REPLACEMENT FOR:		OPTIONAL NO:
Rocker Switch single pole		Customer Drawing
Small Rocker		

THIS INFORMATION IS CONFIDENTIAL AND PROPRIETARY TO TYCO ELECTRONICS AUSTRIA GMBH AND ITS WORLDWIDE SUBSIDIARIES AND AFFILIATES. IT MAY NOT BE DISCLOSED TO ANYONE OTHER THAN TYCO ELECTRONICS PERSONNEL WITHOUT WRITTEN AUTHORIZATION FROM TYCO ELECTRONICS AUSTRIA.