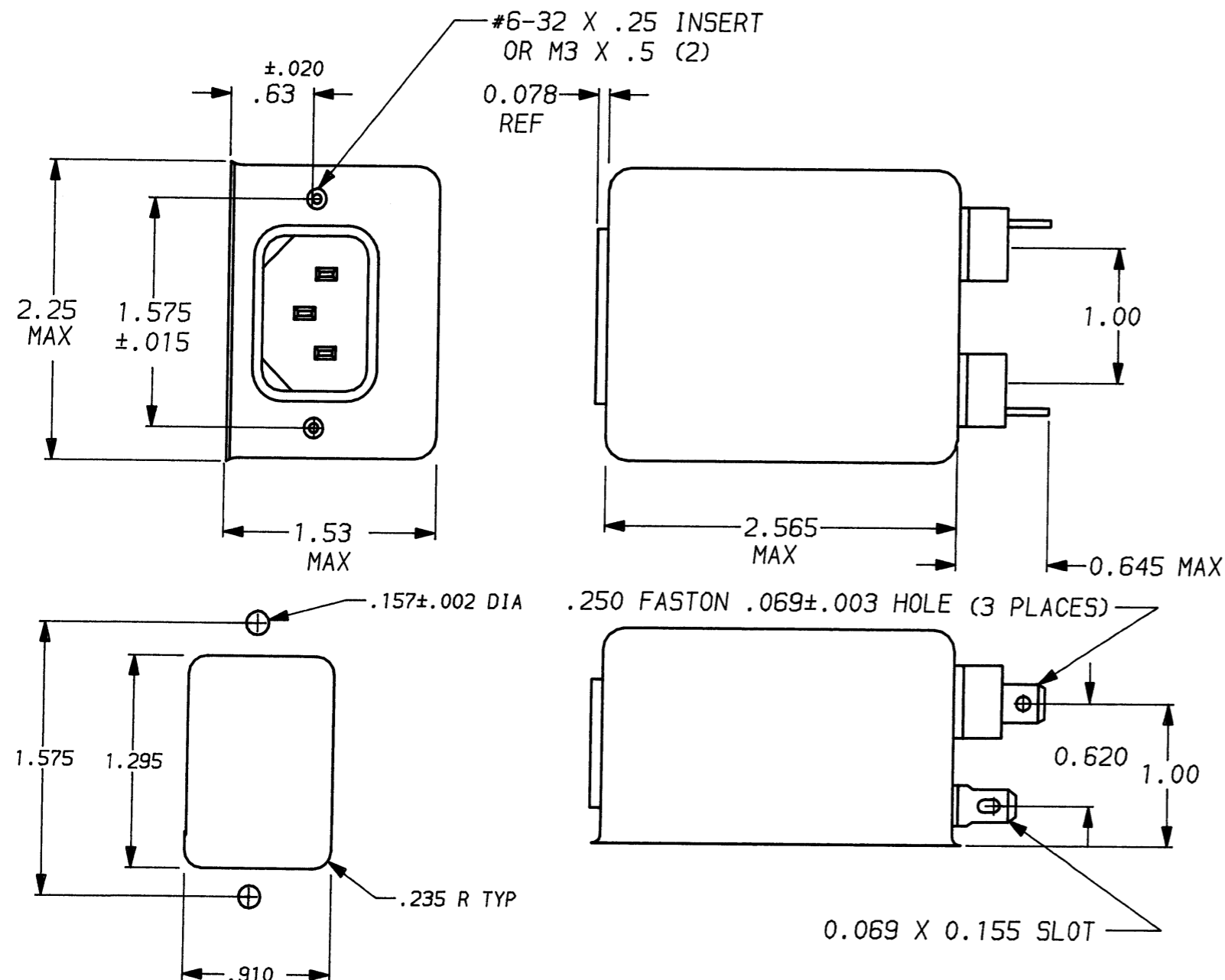


DESCRIPTION	APPROVED BY	DATE	REV
	C. Westby	5-21-92	6
ECO-09-026495	AEG	10DEC09	7



**SAFETY ORGANIZATION(S):**

THIS FILTER HAS BEEN FORMALLY RECOGNIZED, CERTIFIED OR APPROVED BY THE LISTED AGENCY. THEREFORE, ALL TEST/REQUIREMENTS SPECIFIED IN THE LATEST REVISION OF THE FOLLOWING AGENCY STANDARDS HAVE BEEN MET:

UL RECOGNIZED  
 CSA CERTIFIED  
 VDE APPROVED

UL 1283  
 CSA 22.2, NO.0,0.4,8  
 VDE 565-3

**OPERATING SPECIFICATIONS:**

LINE VOLTAGE/CURRENT: 3 AMP., 120/250 VAC  
 3 AMP./40°C, 250 VAC

LINE FREQUENCY: 50-60Hz

MAX. CASE RISE @ RATED CURRENT: 40°C

MAX. LEAKAGE CURRENT, EACH LINE TO GROUND: .5 mA at 120V 60 Hz  
 1.0 mA at 250V 50 Hz

OPERATING AMBIENT TEMP. RANGE: -10°C TO +40°C @ RATED CURRENT, I<sub>r</sub>

IN AN AMBIENT, T<sub>a</sub>, HIGHER THAN 40°C, THE MAXIMUM OPERATING CURRENT, I<sub>o</sub>, IS AS FOLLOWS:

$$I_o = I_r \sqrt{\frac{85 - T_a}{45}}$$

**RELIABILITY SPECIFICATIONS:**

STORAGE TEMPERATURE: -40°C TO +85°C

HUMIDITY: 21 DAYS @ 40°C 95% RH

CURRENT OVERLOAD TEST: 6 TIMES RATED CURRENT FOR 8 SECONDS

**TEST SPECIFICATIONS:**

INDUCTANCE: 7.06 mH NOMINAL

CAPACITANCE: (MEASURED @ 1 KHz, 0.25 VAC MAX., 25°C ±1°C)

LINE TO GROUND: .011 μF ±20%

LINE TO LINE: .54 μF ±20%

DISCHARGE RESISTOR: 330 KΩ

LINE/GROUND AND LINE/LINE INSULATION RESISTANCE: 6000 MΩ (MIN) AT 100 VDC 20°C AND 50% RH

**RECOMMENDED RECEIVING INSPECTION HIPOT:**

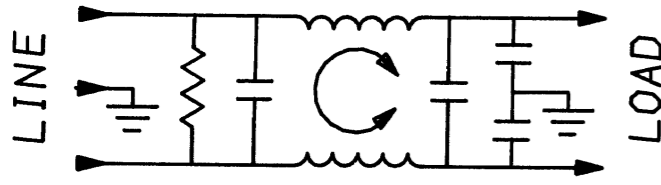
LINE TO GROUND: 2250 VDC FOR 1 MINUTE

LINE TO LINE: 1450 VDC FOR 1 MINUTE

**FILTER APPROVAL:**

THE BEST WAY TO SELECT AND QUALIFY A FILTER IS FOR YOUR ENGINEERING TO TEST THE UNIT IN YOUR EQUIPMENT.

PANEL CUTOUT TOLERANCE ±.005



**1** OBSOLETE PARTS: OBSOLETE CIS STREAMLINING PER D.RENAUD/D.SINISI

<del>1609036-4</del>	OBSOLETE	1
6609036-4		
1609036-3		
6609036-3		

50Ω - 50Ω (MINIMUM) INSERTION LOSS												
FREQUENCY MHz	.01	.02	.05	.08	.1	.15	.5	1	5	10	20	30
COMMON dB	6	11	19	24	26	31	50	44	42	42	42	42
DIFF. dB	1	1	2	3	10	25	59	65	62	40	40	40

TOLERANCE EXCEPT AS NOTED

DECIMAL: .XXX .XX .X ANGLES ± 1°

ENGLISH: ±.025

METRIC: ± —

MATERIAL: AS SUPPLIED

FINISH: AS SUPPLIED



**POWER LINE FILTER**

This document is proprietary to CORCOM INC. and is not to be reproduced nor used for manufacturing purposes except on CORCOM's order or prior written consent.

SCALE	DATE	DRG. NO.	REV.
NTS	8-7-90	3VSK7 & 3VSK7M	7
DRW. BY	ORIGINATOR		
CFW	CFW		