

SPECIFICATION FOR REFERENCE

REFERENCE SIGNATURE
DATE :

CUSTOMER : DIGI **PART NO :** _____

DESCRIPTION : DC to DC 12Watt Converter

PLEASE SIGN AND RETURN ONE COPY.

**ALL PRODUCTION UNITS WILL BE BUILT ACCORDING
TO THIS SPECIFICATIONS.**

MODEL NO: EDD0121-12 **Rev. A**

AGENCY APPROVAL: UL/cUL

PRESENTED BY: JACKY CHANG

CHECKED BY: JOHNSON LIN

APPROVED BY: MICHAEL CHEN

DATE : 1/27/2006

27F, NO.183, HSIN TAI WU ROAD SEC.1, HSIH-JR CITY, TAIPEI HSIEN, TAIWAN.

TEL# (886)2-2642-4205
WEBSITE: www.bobbintron.com

FAX# (886)2-2642-3654
EMAIL: sales@bobbintron.com

3.4 Transient response : output return within $\pm 10\%$ tolerance of nominal voltage within 1m sec.
for 50% load change, 120Hz 50% duty cycle.

3.5 Over voltage protection : 15V reference with output Zener Diode.

3.6 Short circuit protection : protection against short circuit for output

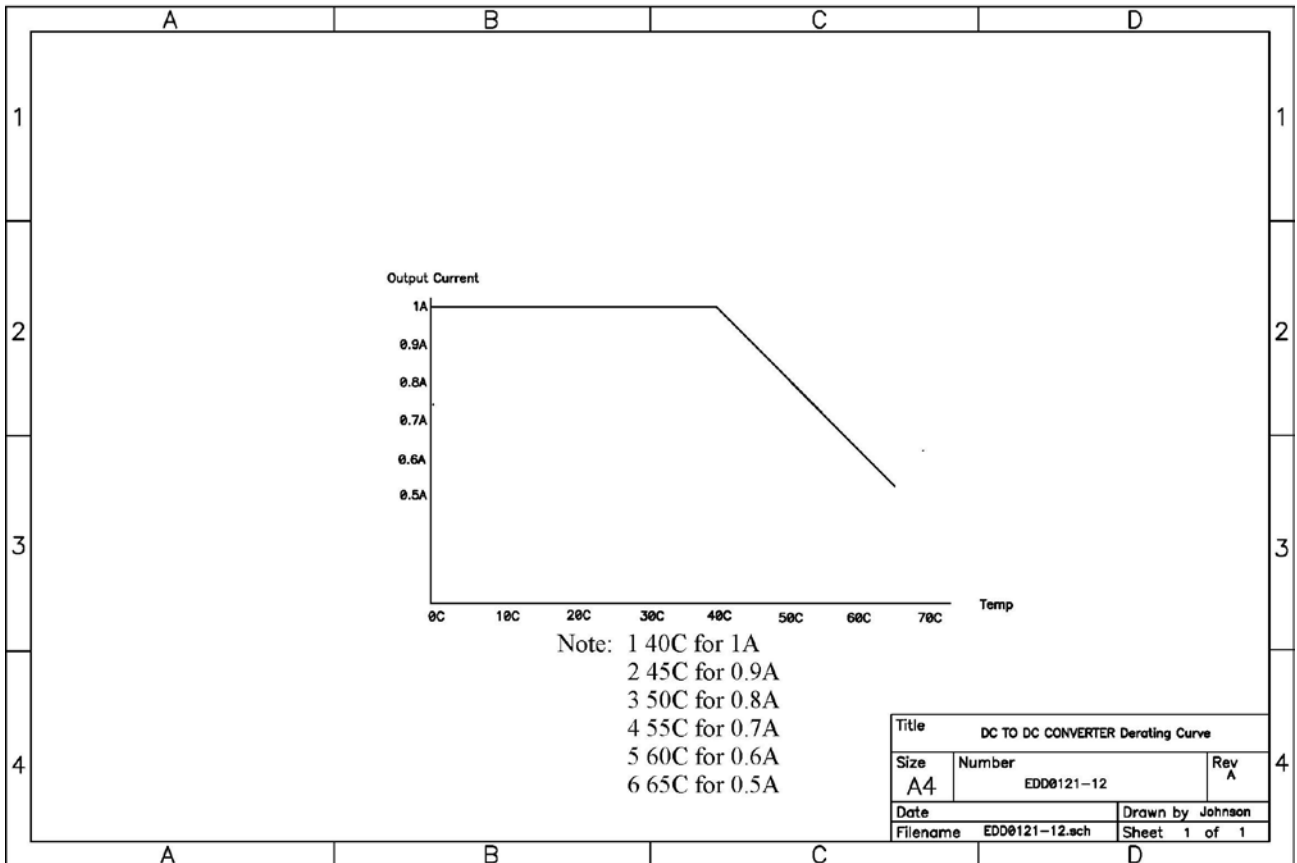
3.6.1 (1) Any protect condition shall cause no damage and no component fail.
(2) Automatic recovery when removal of protect condition.

3.7 Temperature coefficient : 0.2% per $^{\circ}\text{C}$ maximum over entire operating temperature range

4. Environmental :

4.1 Operating temperature : 0°C to 40°C

4.1.1 Derating Curve



4.2 Storage temperature : -20°C to 80°C

4.3 Operating relative humidity : 10% to 85%

4.4 Storage relative humidity : 5% to 95%

5. Safety requirement :(Meet) (1) UL 60950
(2) cUL / CSA 22.2, NO. 60950

6. EMI requirement : CISPR EN55022 class B rules.

7. Hi-pot test :

7.1 Primary to secondary : 2121VDC or 1500VAC for 1 sec. 10mA

9. Reliability

9.1 MTBF : 100K hours min.
@ full load at 25°C ambient temperature.

9.2 Vibration : Frequency range : 5-200Hz.

Vibration amplitude 0.5g ±10% over entire frequency range.

A complete sweep of the frequencies from 5-200Hz at 0.4 decades per mins. duration, if insufficient resonant point are established to provide for 30 minutes input per axis, then a constant acceleration continuous sweep at one octave per minute (0.3 decade / min.) shall be applied for the duration.

9.3 Altitude : will operate properly at any altitude between 0 to 10000ft.

10. Mechanical :

10.1 Dimensions(Ref.) : **74 mm long**
 49 mm width
 40.5 mm height

10.2 Weight (Ref.) : **TBA**

10.3 Input connector : **Molex 39-01-3028 5557 series or equivalent**

10.3.1 Pin Out configuration : **Location : 1. RTN**
 2. -48V

10.5 Output connector : **Shogyo MP-121AR or equivalent**

10.5.1 Pin Out configuration : **Center positive**

