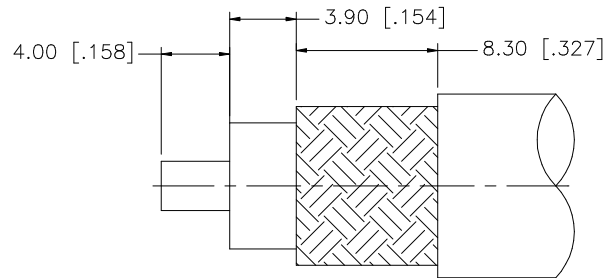
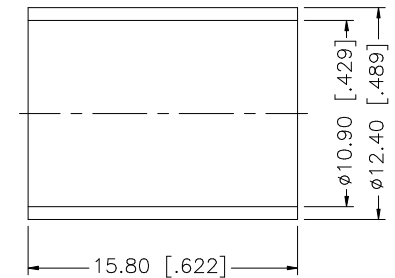
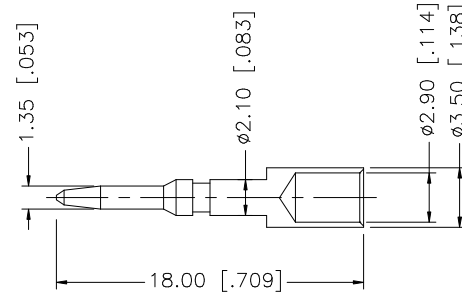
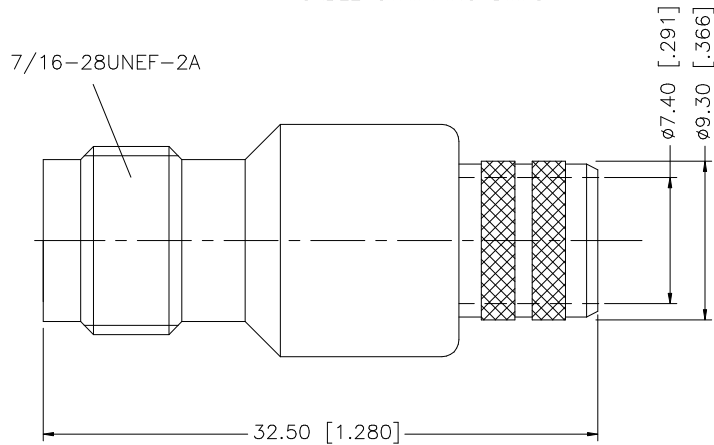


REV.	DATE	DESCRIPTION
NC	05/05/97	INITIAL RELEASE
A	01/11/07	UPDATE DRAWING FORMAT



RECOMMENDED
CABLE STRIPPING DIM'S



NOTE:

1. CRIMPED FERRULE HEX CRIMP SIZE .429"
2. CRIMPED CONTACT PIN HEX CRIMP SIZE .118"

DESCRIPTION	MATERIAL	FINISH	QTY	DO NOT SCALE DRAWING	APPROVALS	DATE	<h1 style="color: blue; margin: 0;">Amphenol Connex</h1> <p style="text-align: center; margin: 0;">PART DESCRIPTION</p> <p style="text-align: center; margin: 0;">TNC REVERSE POLARITY CRIMP JACK (FOR BELDEN 9913, 9914)</p> <p style="text-align: center; margin: 0;">PART NO.</p> <p style="text-align: center; margin: 0;">122392RP</p> <p style="text-align: center; margin: 0;">DWG. NO. 122392RP.DWG</p>	REV.	SIZE	SCALE	
8				<small>UNLESS OTHERWISE SPECIFIED DIMENSIONS ARE IN MILLIMETERS. DIMENSIONS IN [] ARE IN INCHES AND FOR CUSTOMER REFERENCE ONLY.</small> <small>UNLESS OTHERWISE SPECIFIED TOLERANCES FOR MILLIMETERS ARE:</small> 0.5 - 8mm ± 0.20mm 8 - 30mm ± 0.40mm 30 - 120mm ± 0.50mm <small>UNLESS OTHERWISE SPECIFIED TOLERANCES FOR INCHES ARE:</small> .020 - .315 = ± 0.007" .315 - 1.180 = ± 0.015" 1.180 - 4.724 = ± 0.020"							
7					DRAWN	G.R.S.		01/11/07			
6					CHECKED						
5					ISSUED						
4	FERRULE	COPPER	NICKEL		1	SHEET	1 OF 1				
3	CONTACT PIN	BRASS	GOLD	1	CAD FILE	C:/122/122392RP.DWG					
2	INSULATOR	TEFLON	NATURAL	1							
1	BODY	BRASS	NICKEL	1							