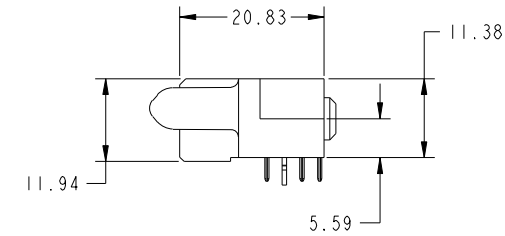
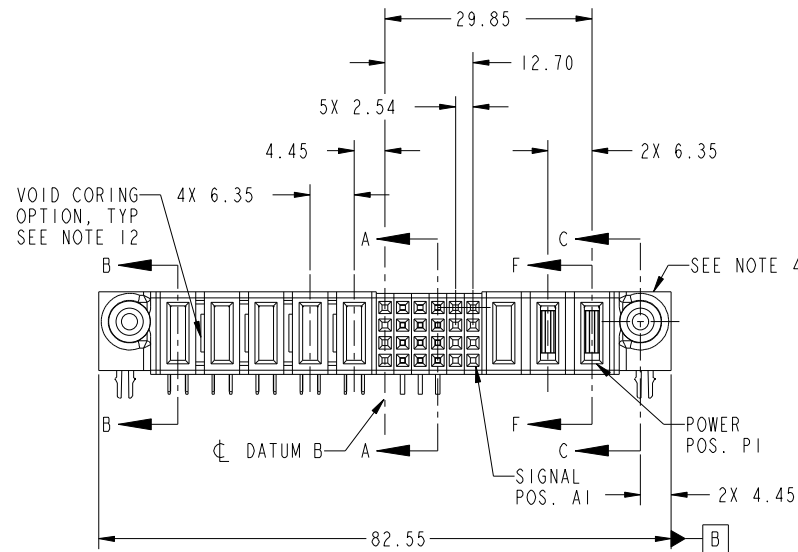


Tous droits strictement réservés. Reproduction ou communication a des tiers interdite sous quelque forme que ce soit sans autorisation écrite du propriétaire. Propriete de c FCI. Droits de reproduction FCI.



All rights strictly reserved. Reproduction or issue to third parties in any form whatever is not permitted without written authority from the proprietor. Property of FCI. Copyright FCI.

PRODUCT NO.	ROWS	POWER					SIGNAL					POWER					
		E2	P8	P7	P6	P5	P4	6	5	4	3	2	1	P3	P2	P1	E1
51915-215-- NOTE 3	D C B A	PC	PC	PC	PC	PA	X	H	H	H	X	X	X	X	X	X	X
							X	G	G	G	X	X	X	X	X	X	X
							X	F	F	F	X	X	X	X	X	X	X
							X	E	E	E	X	X	X	X	X	X	X



CODE	DIM "M" MATING LENGTH	CONTACT TYPE
PC	[2.34]	POWER
H	[N/A]	SIGNAL
G	[N/A]	SIGNAL
F	[N/A]	SIGNAL
E	[N/A]	SIGNAL
HA	[N/A]	HOLD-DOWN
PA	[1.07]	POWER
PH	[2.34]	POWER
X	OMITTED	

mat'l code				SEE NOTE 2		tolerances unless otherwise specified		CUSTOMER		FCI	
ltr	ecn no.	dr	date	linear	0.X ± 0.5	projection		COPY		www.fciconnect.com	
A	DG09-0248	JW	08/03/09		0.XX ± 0.25	M		title		3P + 24S + 5P	
				angles	0.XXX ± 0.1	MM		product family		PwrBlade	
				dr	0° ± 2°	scale		size		code	
				enr	JULIA WANG 07/24/09	1:1		dwg no		213	
				chr	JULIA WANG 07/24/09			51915-215		sheet	
				appd	PM ZHENG 07/24/09			A		1 of 4	
					JOSEPH HSIA 07/24/09						
sheet index	revision sheet	A	A	A	A						
1	2	3	4								

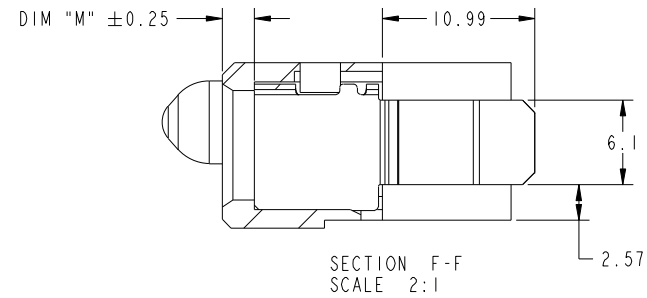
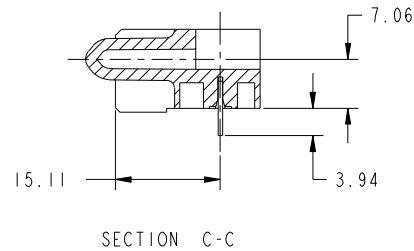
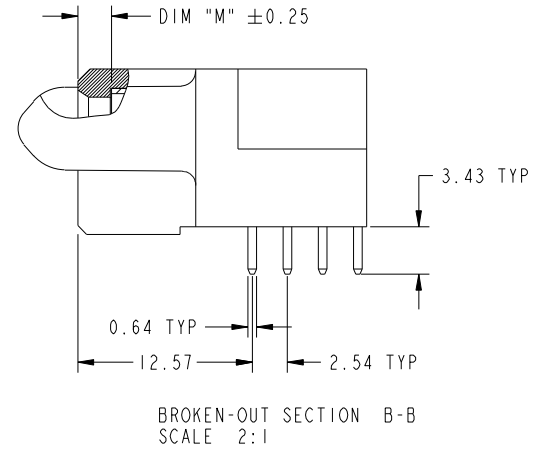
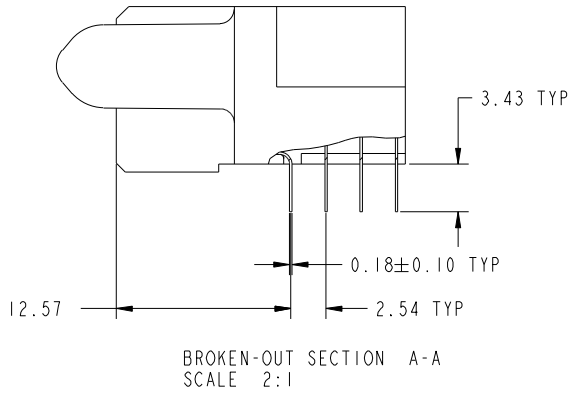
cage code 22526

Tous droits strictement reserves. Reproduction ou communication a des tiers interdite sous quelque forme que ce soit sans autorisation écrite du propriétaire. Propriete de c FCI. Droits de reproduction FCI.



All rights strictly reserved. Reproduction or issue to third parties in any form whatever is not permitted without written authority from the proprietor. Property of FCI. Copyright FCI.

PRODUCT NUMBER  
51915-215--  
NOTE 3



mat'l code		SEE NOTE 2		tolerances unless otherwise specified		CUSTOMER		 www.fciconnect.com	
ltr	ecn no.	dr	date	linear	0.X ± 0.5	COPY		title	
A					0.XX ± 0.25			3P + 24S + 5P R/A SOLDER RECEPTACLE	
				angles	0.XXX ± 0.1			product family PwrBlade code	
				dr	0° ± 2°	scale		size	
				enr	JULIA WANG 07/24/09	1:1		dwg no	
				chr	JULIA WANG 07/24/09			51915-215	
				appd	PM ZHENG 07/24/09			sheet	
					JOSEPH HSIA 07/24/09			2 of 4	
sheet index		revision sheet							

cage code 22526

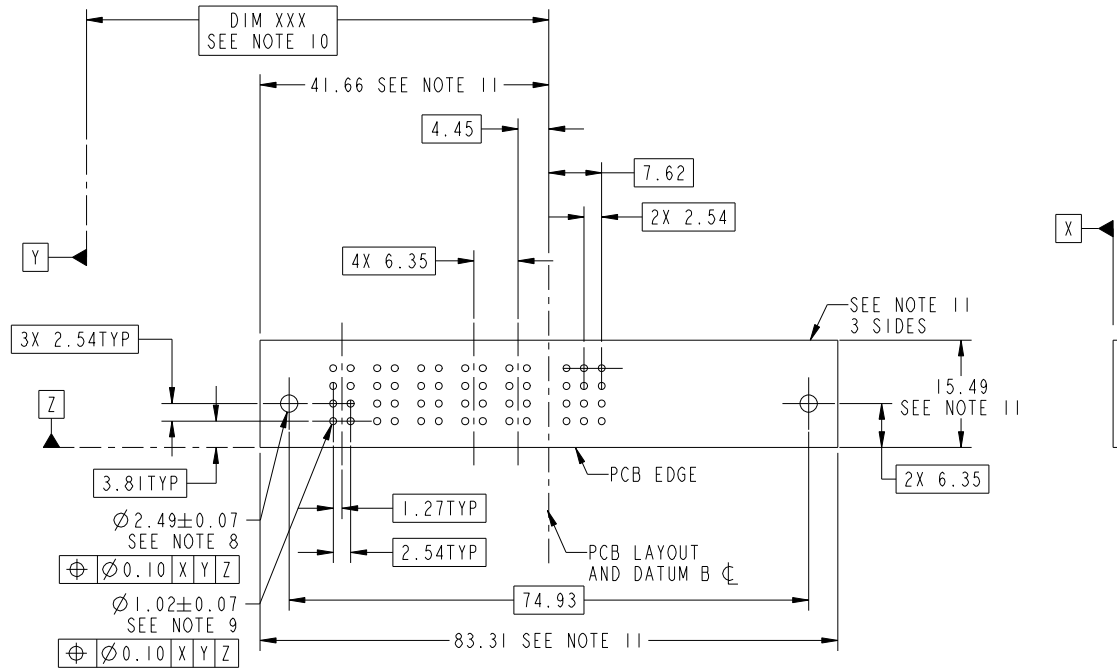
Pro/E

Tous droits strictement reserves. Reproduction ou communication a des tiers interdite sous quelque forme que ce soit sans autorisation écrite du propriétaire. Propriete de c FCI. Droits de reproduction FCI.



All rights strictly reserved. Reproduction or issue to third parties in any form whatever is not permitted without written authority from the proprietor. Property of FCI. Copyright FCI.

PRODUCT NUMBER  
51915-215--  
NOTE 3



RECOMMENDED PCB LAYOUT

mat'l code				SEE NOTE		tolerances unless otherwise specified		CUSTOMER		FCI	
ltr	ecn no.	dr	date	linear	0.X ± 0.5	COPY		www.fciconnect.com		title	
A					0.XX ± 0.25	projection		3P + 24S + 5P		R/A SOLDER RECEPTACLE	
				angles	0.XXX ± 0.1	MIM		product family		PwrBlade	code
				dr	0° ± 2°	scale		size	dwg no	213	sheet
				enr	JULIA WANG 07/24/09	1:1		A	51915-215	3 of 4	
				chr	JULIA WANG 07/24/09						
				appd	PM ZHENG 07/24/09						
					JOSEPH HSIA 07/24/09						
sheet index	revision sheet										

cage code 22526

Pro/E

Tous droits strictement reserves. Reproduction ou communication a des tiers interdite sous quelque forme que ce soit sans autorisation écrite du propriétaire. Propriete de c FCI. Droits de reproduction FCI.



All rights strictly reserved. Reproduction or issue to third parties in any form whatever is not permitted without written authority from the proprietor. Property of FCI. Copyright FCI.

PRODUCT NUMBER  
51915-215--  
NOTE 3

NOTES:

1. DIMENSIONS AND TOLERANCES ARE IN ACCORDANCE WITH ASME Y14.5M, 1994 UNLESS OTHERWISE SPECIFIED.

CONNECTOR NOTES:

2. HOUSING MATERIAL: UL 94 V-0 GLASS FILLED HIGH-TEMP THERMOPLASTIC  
POWER CONTACT MATERIAL: COPPER ALLOY  
SIGNAL PIN MATERIAL: COPPER ALLOY

3. PLATING:  
SEE ITEM 5 & 6 IN PRINT 10064183 FOR PLATING SPEC. OF 51915-215, 51915-215LF RESPECTIVELY.

4. MANUFACTURER'S NAME, P/N, AND DATE CODE TO APPEAR ON THIS SURFACE.

5. PRODUCT SPECIFICATION GS-12-149.  
APPLICATION SPECIFICATION BUS-20-067.

6. PACKAGED IN TRAYS.

PCB NOTES:

7. ALL HOLE DIAMETERS ARE FINISHED HOLE SIZE.

8. MOUNTING HOLES, WHERE APPLICABLE, ARE UNPLATED.

9.  $\varnothing 1.151 \pm 0.025$  DRILLED HOLES PLATED WITH 0.008 MIN SnPb OR Sn OVER 0.03 TO 0.08 Cu PLATING TO ACHIEVE  $\varnothing 1.02 \pm .07$  HOLE.

10. "DIM XXX" TO BE DETERMINED BY THE CUSTOMER.

11. CONNECTOR KEEP-OUT ZONE.

12. THE VOID CORING IN BETWEEN POWER MODULES, SIGNAL MODULES AND END MODULES ARE OPTIONAL AND THE SHAPE MAY BE DIFFERENT FOR OPTIMIZE THE MOLDING PROCESS. THE VOID CORING WILL NOT EFFECT TO PRODUCT FUNCTION.

mat'l code				SEE NOTE 2		tolerances unless otherwise specified		CUSTOMER		FCI www.fciconnect.com	
ltr	ecr no.	dr	date	linear	0.X ± 0.5		COPY		projection	title	
A					0.XX ± 0.25		MIM			3P + 24S + 5P R/A SOLDER RECEPTACLE	
					0.XXX ± 0.1		1:1			product family PwrBlade code 213	
				angles	0° ± 2°		scale		size A		sheet 4 of 4
				dr	JULIA WANG	07/24/09			dwg no 51915-215		
				enr	JULIA WANG	07/24/09					
				chr	PM ZHENG	07/24/09					
				appd	JOSEPH HSIA	07/24/09					
sheet index	revision sheet										

cage code 22526

Pro/E