



SAW filters for infrastructure systems

Series/Type: B4049

The following products presented in this data sheet are being withdrawn.

| Ordering Code | Substitute Product | Date of Withdrawal | Deadline Last Orders | Last Shipments |
|-----------------|--------------------|--------------------|----------------------|----------------|
| B39122B4049U410 | B39122B5102U810 | 2009-09-25 | 2009-12-31 | 2010-03-31 |

For further information please contact your nearest EPCOS sales office, which will also support you in selecting a suitable substitute. The addresses of our worldwide sales network are presented at www.epcos.com/sales.



SAW Components

B4049

Low-Loss Filter for Mobile Communication

1240,0 MHz

Preliminary Data



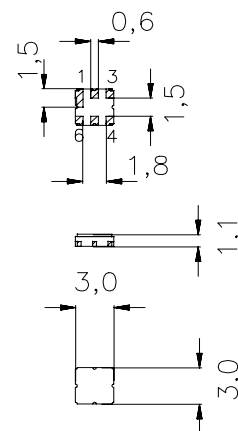
Ceramic package **DCC6C**

Features

- Low-loss RF filter for WLAN IF
- Low amplitude ripple
- Usable passband 20 MHz
- Ceramic package for **Surface Mounted Technology (SMT)**

Terminals

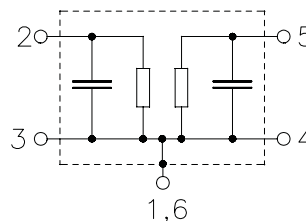
- Ni , gold-plated



Dimensions in mm, approx. weight 0,037 g

Pin configuration

- 2 Input
- 5 Output
- 1, 3, 4, 6 To be grounded
- 1, 3, 4, 6 Case ground



| Type | Ordering code | Marking and Package according to | Packing according to |
|-------|---------------|----------------------------------|----------------------|
| B4049 | | C61157-A7-A67 | F61074-V8088-Z000 |

Electrostatic **Sensitive Device (ESD)**

Maximum ratings

| | | | |
|----------------------------|-----------|-------------|-----|
| Operable temperature range | T | 0 / + 55 | °C |
| Storage temperature range | T_{stg} | - 40 / + 85 | °C |
| DC voltage | V_{DC} | 0 | V |
| Input power max. | P_{IN} | 0 | dBm |



SAW Components

B4049

Low-Loss Filter for Mobile Communication

1240,0 MHz

Preliminary Data



Characteristics

Operating temperature range: $T = 0$ to $+55$ °C
 Terminating source impedance: $Z_S = 50 \Omega$
 Terminating load impedance: $Z_L = 50 \Omega$

| | | min. | typ. | max. | |
|--|----------------|------|--------|------|-----|
| Center frequency | f_C | — | 1240,0 | — | MHz |
| Maximum insertion attenuation | α_{max} | | | | |
| 1230,0 ... 1250,0 MHz | | — | 2,9 | 4,0 | dB |
| Amplitude ripple (p-p) | $\Delta\alpha$ | | | | |
| 1230,0 ... 1250,0 MHz | | — | 0,6 | 1,5 | dB |
| Attenuation (relative to α_{max}) | α_{rel} | | | | |
| 0,0 ... 1150,0 MHz | | 40 | 53 | — | dB |
| 1150,0 ... 1200,0 MHz | | 35 | 39 | — | dB |
| 1200,0 ... 1212,0 MHz | | 27 | 30 | — | dB |
| 1268,0 ... 1500,0 MHz | | 24 | 27 | — | dB |
| 1500,0 ... 2500,0 MHz | | 40 | 46 | — | dB |
| 2500,0 ... 4000,0 MHz | | 17 | 21 | — | dB |



SAW Components

B4049

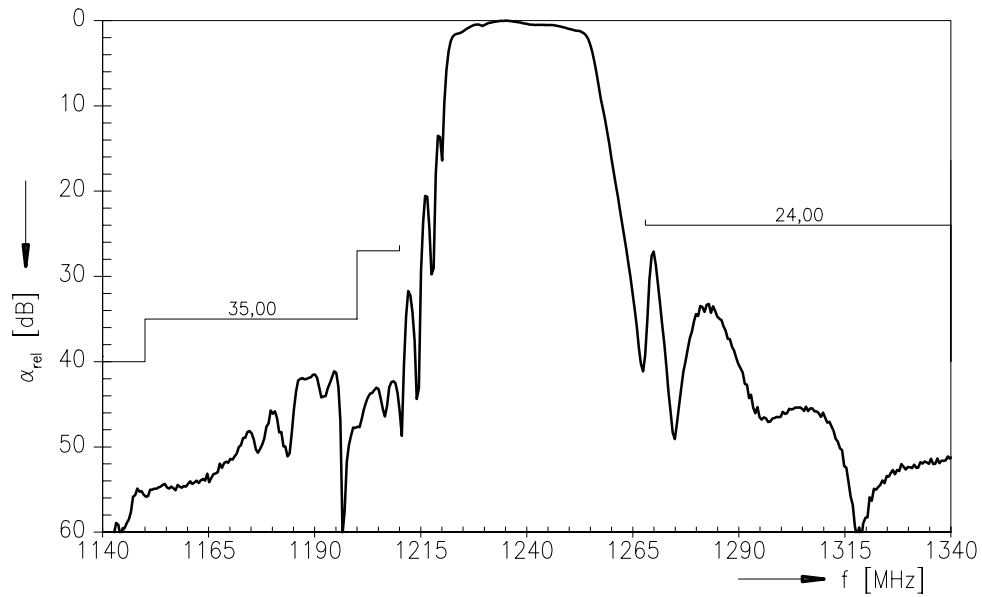
Low-Loss Filter for Mobile Communication

1240,0 MHz

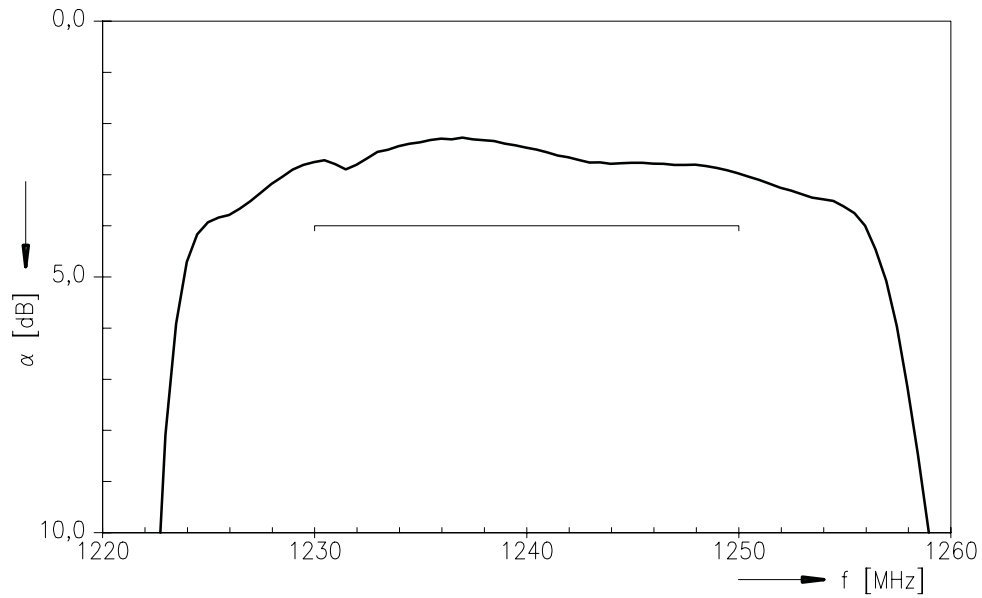
Preliminary Data



Transfer function (normalized)



Transfer function (passband)





SAW Components

B4049

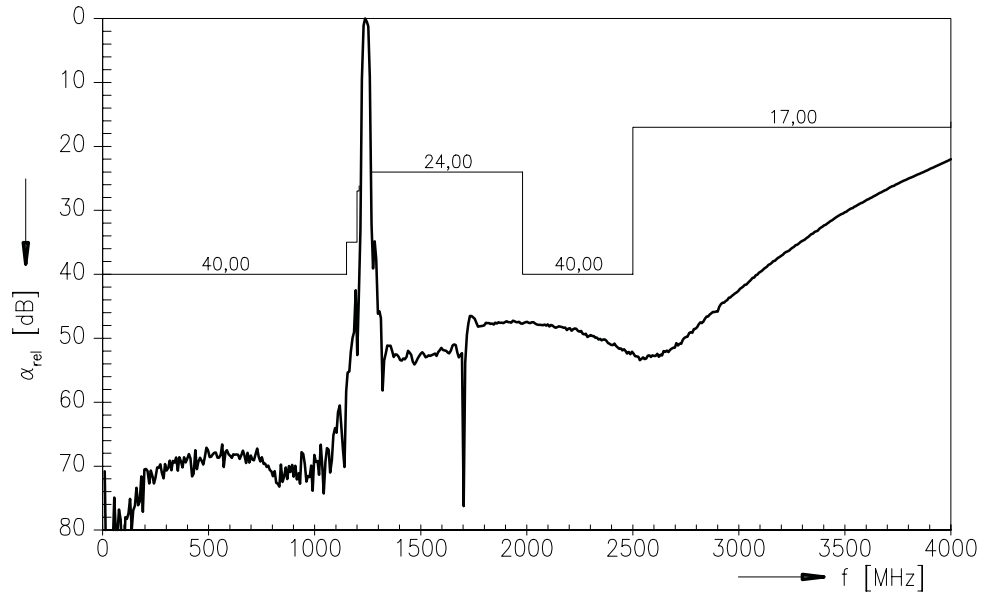
Low-Loss Filter for Mobile Communication

1240,0 MHz

Preliminary Data



Transfer function (wideband, normalized)





SAW Components

B4049

Low-Loss Filter for Mobile Communication

1240,0 MHz

Preliminary Data



Published by EPCOS AG
Surface Acoustic Wave Components Division, OFW E MF
P.O. Box 80 17 09, D-81617 München

© EPCOS AG 1999. All Rights Reserved.

As far as patents or other rights of third parties are concerned, liability is only assumed for components per se, not for applications, processes and circuits implemented within components or assemblies.

The information describes the type of component and shall not be considered as assured characteristics.

Terms of delivery and rights to change design reserved.

For questions on technology, prices and delivery please contact the sales offices of EPCOS AG or the international representatives.

Due to technical requirements components may contain dangerous substances. For information on the type in question please also contact one of our sales offices.