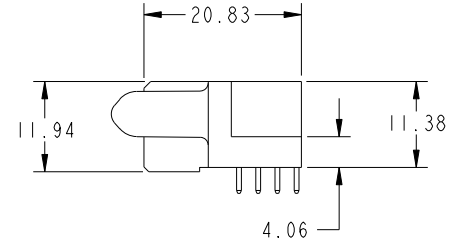
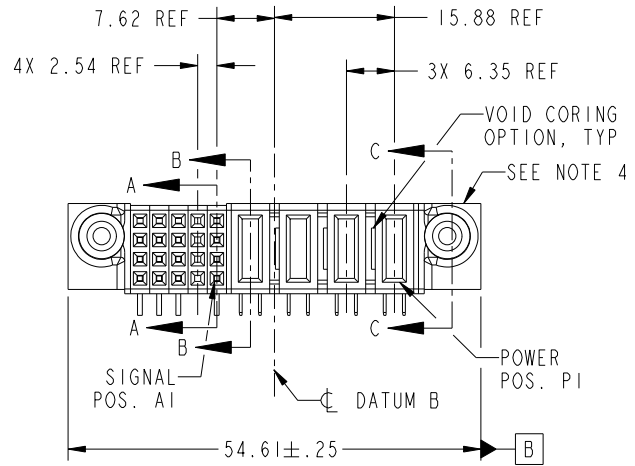
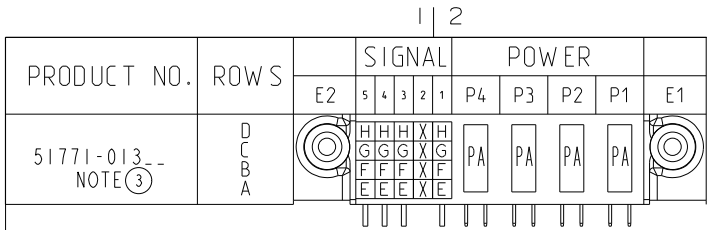


Tous droits strictement reserves. Reproduction ou communication a des tiers interdite sous quelque forme que ce soit sans autorisation ecrite du proprietaire. Propriete de c.FCI. Droits de reproduction FCI.

All rights strictly reserved. Reproduction or issue to third parties in any form whatever is not permitted without written authority from the proprietor. Property of FCI. Copyright FCI.



CODE	DIM "M" MATING LENGTH	CONTACT TYPE
PA	[1.07]	POWER
H	[N/A]	SIGNAL
G	[N/A]	SIGNAL
F	[N/A]	SIGNAL
E	[N/A]	SIGNAL
X	OMITTED	OMITTED

mat'l code				tolerances unless otherwise specified		CUSTOMER	
ltr	ecn no.	dr	date	linear	0.X ± 0.3	COPY	
A	DG07-0065	JMG	02/14/07		0.XX ± 0.13	projection	
B	DG08-0251	W D	09/15/08	angles	0.XXX ± 0.051	title	
					0° ± 2°	4P + 20S R/A STB RECEPTACLE	
				dr	JM GUO 02/14/07	product family	
				enrg	RYAN YUAN 02/14/07	PwrBlade	
				chr	BEER FU 02/14/07	code	213
				appd	JOSEPH HSIA 02/14/07	size	dwg no
sheet index	revision sheet	B 1	B 2	B 3	B 4	scale	1:1
						product	51771-013
						sheet	1 of 4

FCI www.fciconnect.com

product family PwrBlade

size A

dwg no 51771-013

code 213

sheet 1 of 4

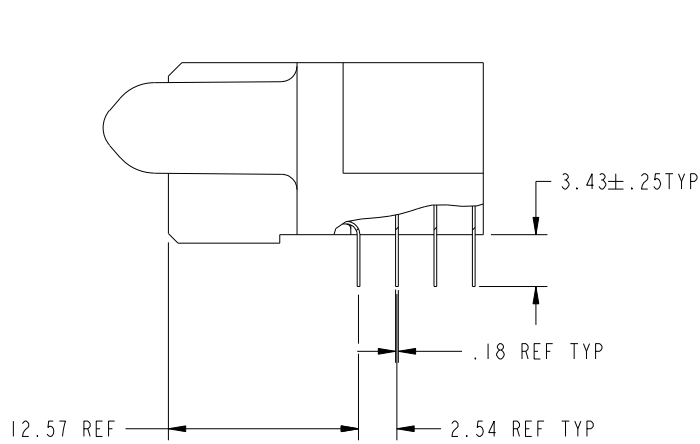
Tous droits strictement reserves. Reproduction ou communication a des tiers interdite sous quelque forme que ce soit sans autorisation ecrite du proprietaire. Propriete de c.FCI. Droits de reproduction FCI.

All rights strictly reserved. Reproduction or issue to third parties in any form whatever is not permitted without written authority from the proprietor. Property of FCI. Copyright FCI.

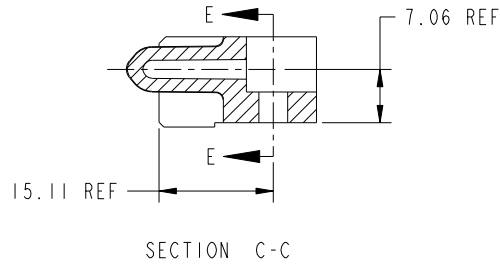


PRODUCT NUMBER

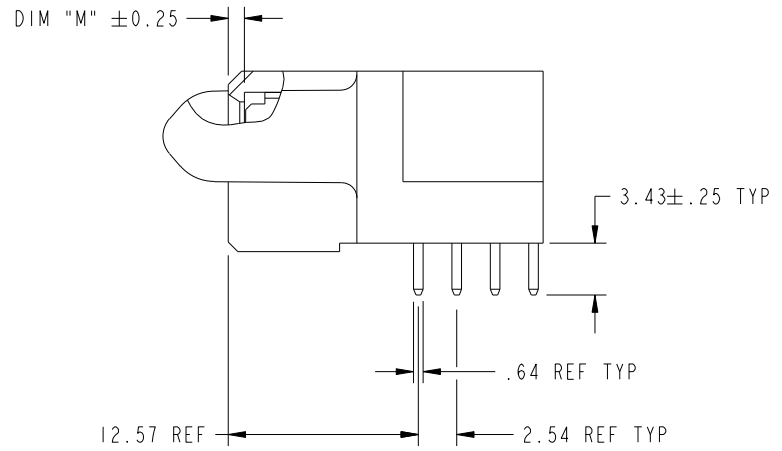
51771-013__
NOTE: 3



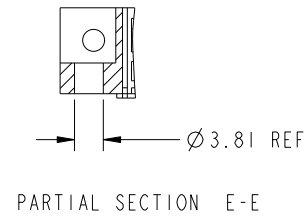
BROKEN-OUT SECTION A-A
SCALE 2:1



SECTION C-C



BROKEN-OUT SECTION B-B
SCALE 2:1



PARTIAL SECTION E-E

mat'l code				SEE NOTE		tolerances unless otherwise specified		CUSTOMER		 www.fciconnect.com	
ltr	ecn no.	dr	date	linear	0.X ± 0.3		COPY		title		
B					0.XX ± 0.13		projection		4P + 20S		
					0.XXX ± 0.051				R/A STB RECEPTACLE		
				angles	0° ± 2°		 MM		product family		code
					dr	JM GUO	02/14/07	 1:1		PwrBlade	
				enr	RYAN YUAN	02/14/07			size	dwg no	sheet
				chr	BEER FU	02/14/07			A	51771-013	2 of 4
				appd	JOSEPH HSIA	02/14/07					
sheet index	revision sheet										

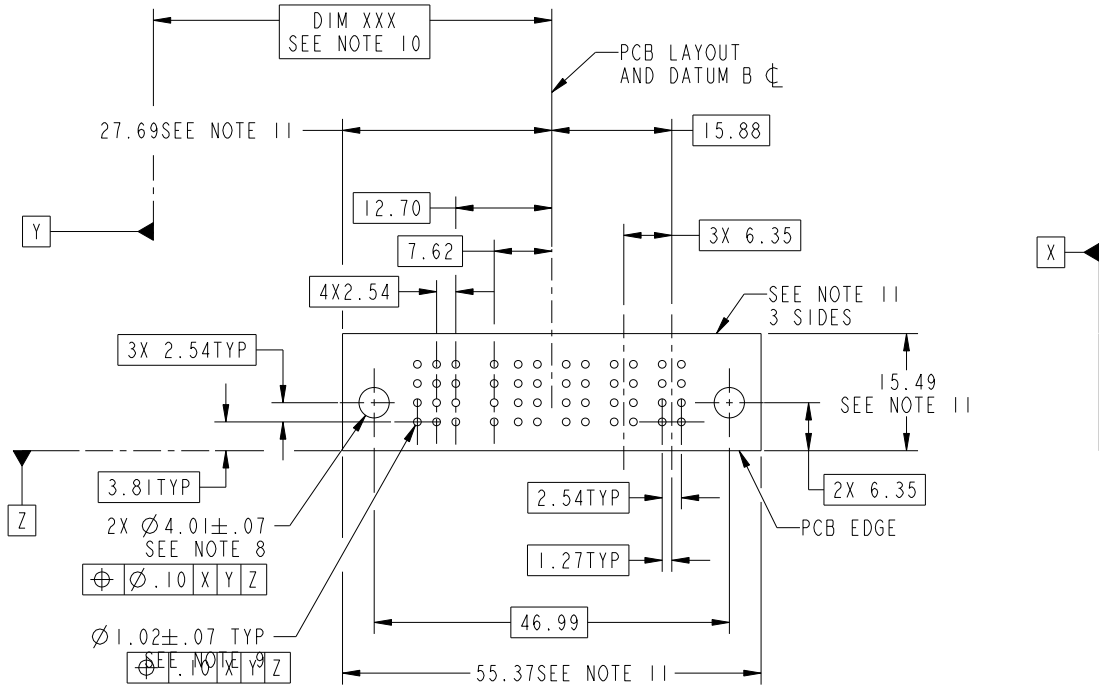
cage code 28506

Tous droits strictement reserves. Reproduction ou communication a des tiers interdite sous quelque forme que ce soit sans autorisation écrite du propriétaire. Propriete de c.FCI. Droits de reproduction FCI.

All rights strictly reserved. Reproduction or issue to third parties in any form whatever is not permitted without written authority from the proprietor. Property of FCI. Copyright FCI.



PRODUCT NUMBER
51771-013--
NOTE: 3



RECOMMENDED PCB LAYOUT

mat'l code		SEE NOTE		tolerances unless otherwise specified		CUSTOMER		 www.fciconnect.com	
ltr	ecn no.	dr	date	linear	0.X ± 0.3	COPY		title	
B				angles	0.XX ± 0.13	projection		4P + 20S	
					0.XXX ± 0.051			R/A STB RECEPTACLE	
				dr	0° ± 2°	MM		product family	
				enr	JM GUO 02/14/07	scale		PwrBlade	
				chr	RYAN YUAN 02/14/07	1:1		code	
				appd	BEER FU 02/14/07	A		213	
					JOSEPH HSIA 02/14/07	51771-013		sheet	
sheet index	revision sheet							3 of 4	

cage code 22526

PDM: Rev: B

STATUS: Released

Printed: Dec 20, 2010

Tous droits strictement reserves. Reproduction ou communication a des tiers interdite sous quelque forme que ce soit sans autorisation écrite du propriétaire. Propriete de c.FCI. Droits de reproduction FCI.

All rights strictly reserved. Reproduction or issue to third parties in any form whatever is not permitted without written authority from the proprietor. Property of FCI. Copyright FCI.



1 | 2

3

4

PRODUCT NUMBER

51771-013__
NOTE: 3

NOTES:

1. DIMENSIONS AND TOLERANCES ARE IN ACCORDANCE WITH ASME Y14.5M, 1994 UNLESS OTHERWISE SPECIFIED.

CONNECTOR NOTES:

2. HOUSING MATERIAL: UL 94 V-0 GLASS FILLED HIGH-TEMP THERMOPLASTIC
POWER CONTACT MATERIAL: COPPER ALLOY
SIGNAL PIN MATERIAL: COPPER ALLOY

3. SEE ITEM 5 & 6 IN PRINT I0064183 FOR PLATING SPEC OF 51771-013 AND 51771-013LF RESPECTIVELY.

4. MANUFACTURER'S NAME, P/N, AND DATE CODE TO APPEAR ON THIS SURFACE.

5. PRODUCT SPECIFICATION GS-12-149.
APPLICATION SPECIFICATION BUS-20-067.

6. PACKAGED IN TRAYS.

PCB NOTES:

7. ALL HOLE DIAMETERS ARE FINISHED HOLE SIZE.

8. MOUNTING HOLES, WHERE APPLICABLE, ARE UNPLATED.

9. $\varnothing 1.151 \pm 0.025$ DRILLED HOLES PLATED WITH
0.008 MIN SnPb OR Sn OVER 0.03
TO 0.08 Cu PLATING TO ACHIEVE
 $\varnothing 1.02 \pm .07$ HOLE.

10. "DIM XXX" TO BE DETERMINED BY THE CUSTOMER.

11. CONNECTOR KEEP-OUT ZONE.

12. A Δ SYMBOL WILL BE NEXT TO ANY DIMENSION, VIEW, OR NOTE WHICH HAS BEEN MODIFIED WITH THE CURRENT DRAWING REVISION.

mat'l code				SEE NOTE		tolerances unless otherwise specified		CUSTOMER		 www.fciconnect.com	
ltr	ecn no.	dr	date	linear	0.X ± 0.3		COPY		title 4P + 20S R/A STB RECEPTACLE		
B					0.XX ± 0.13		projection				
					0.XXX ± 0.051						
				angles	0° $\pm 2°$				product family PwrBlade code		
				dr	JM GUO	02/14/07	scale		size	dwg no	213
				enrg	RYAN YUAN	02/14/07	1:1		A	51771-013	sheet
				chr	BEER FU	02/14/07					4 of 4
				appd	JOSEPH HSIA	02/14/07					
sheet index	revision sheet										

1 | 2

Pro/E

PDM: Rev: B

STAT: US: Released

Printed: Dec 20, 2010