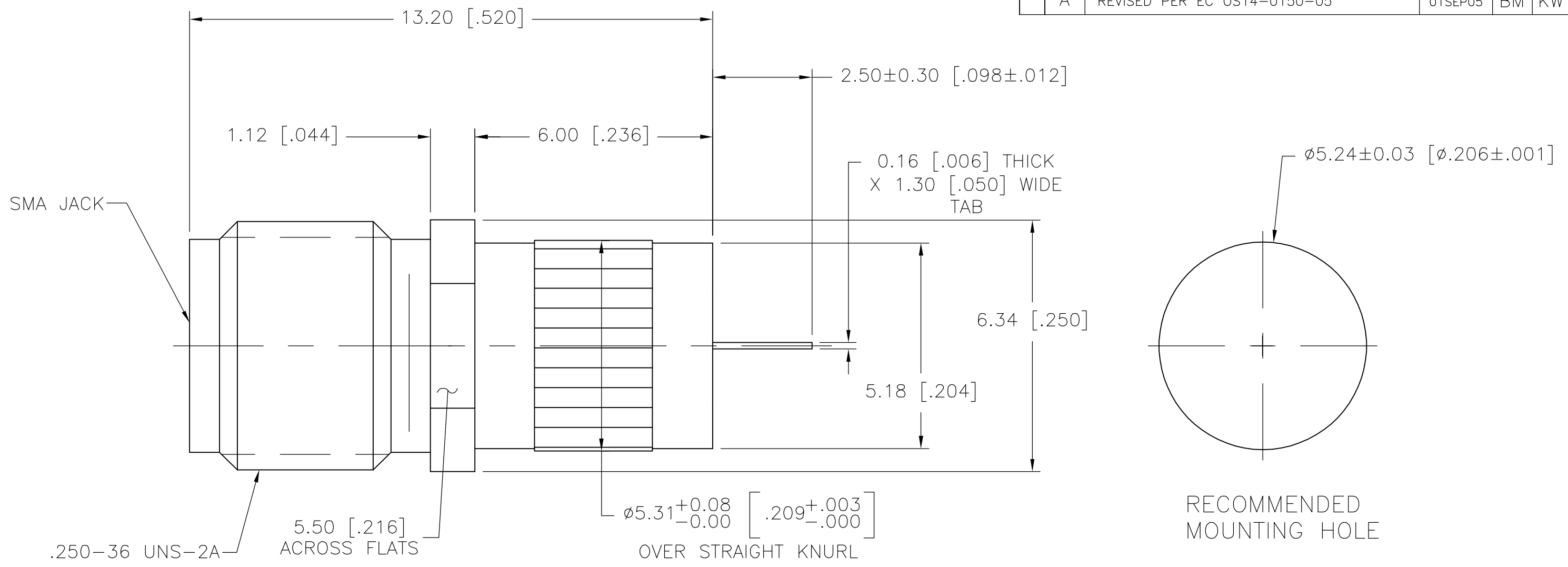


THIS DRAWING IS UNPUBLISHED. RELEASED FOR PUBLICATION
 © COPYRIGHT BY TYCO ELECTRONICS CORPORATION. ALL RIGHTS RESERVED.

LOC	DIST	REVISIONS					
AJ	17	P	LTR	DESCRIPTION	DATE	DWN	APVD
		A		REVISED PER EC OS14-0150-05	01SEP05	BM	KW



ELECTRICAL	MECHANICAL	ENVIRONMENTAL	HOUSING	MATERIAL	FINISH	PART NUMBER
Nominal Impedance (Ohms) <u>50</u> Frequency Range (GHz) <u>DC to 18 GHz</u> Volt Rating (VRMS MAX) @ Sea Level <u>335</u> VSWR <u>1.05 + .005 fGHz</u> Insertion Loss (dB MAX) <u>.03 √f(GHz)</u> RF Leakage (dB MIN) <u>[-90-f(GHz)]</u> Corona, 70,000 Ft (VRMS MIN) <u>250</u> Dielectric Withstanding Voltage (VRMS MIN) @ Sea Level <u>1000</u> Contact Resistance (Milliohms MAX) Center Contact <u>3.0</u> Outer Contact <u>2.0</u> Cable to Housing <u>N/A</u> RF High Potential @ Sea Level (VRMS MIN @ 5 MHz) <u>670</u> I.R.(Megohms MIN) <u>10,000</u>	Interface Dimensions MIL-STD-348A, Fig. <u>310.2</u> Recommended Mating Torque <u>3-5 in/lbs(0.34Nm-0.57Nm)</u> Mating Characteristics: Insertion (MAX Lbs) <u>3.0 (1.36Kg)</u> Withdrawal (MIN Oz) <u>1.0 (28.35g)</u> Force to Engage and Disengage (In-Lbs MAX) <u>2(0.23Nm)</u> Center Contact Captivation Axial (Lbs) <u>6.0 (2.7Kg) MIN FROM INTERFACE</u> <u>4.0 (1.8Kg) MIN FROM FLANGE</u> Radial (In-Oz) <u>4.0 (0.028Nm)</u>	TEMPERATURE RATING <u>-65 C TO +125 C</u> Vibration MIL-STD-202, Method 204, Condition D Shock MIL-STD-202, Method 213, Condition I Thermal Shock MIL-STD-202, Method 107, Condition B Moisture Resistance MIL-STD-202, Method 106, Except Vibration Shall Be Omitted Corrosion - MIL-STD-202, Method 101, Condition B, 5% salt spray	BRASS TFE FLUOROCARBON PER ASTM-D-1457 BERYLLIUM COPPER PER ASTM B 196, ALLOY C17300, CONDITION H	WHITE BRONZE N/A GOLD PLATE PER MIL-G-45204	6311167-1	
THIS DRAWING IS A CONTROLLED DOCUMENT.			DWN B. MCMASTER 27APR05 CHK J. HAVENER 27APR05 APVD J. HAVENER 27APR05		Tyco Electronics Corporation Harrisburg, Pa 17105-3608	
DIMENSIONS: mm [INCHES]			TOLERANCES UNLESS OTHERWISE SPECIFIED:		NAME	
			0 PLC ± - 1 PLC ± - 2 PLC ± 0.13 [.005] 3 PLC ± - 4 PLC ± - ANGLES ± 1°		SMA, PANEL MOUNT, JACK RECEPTACLE STRAIGHT TERMINAL (2058-5573-36)	
MATERIAL			FINISH		SIZE CAGE CODE DRAWING NO RESTRICTED TO	
-			-		A3 00779 C-6311167 -	
CUSTOMER DRAWING					SCALE 4:1	SHEET 1 OF 1 REV A