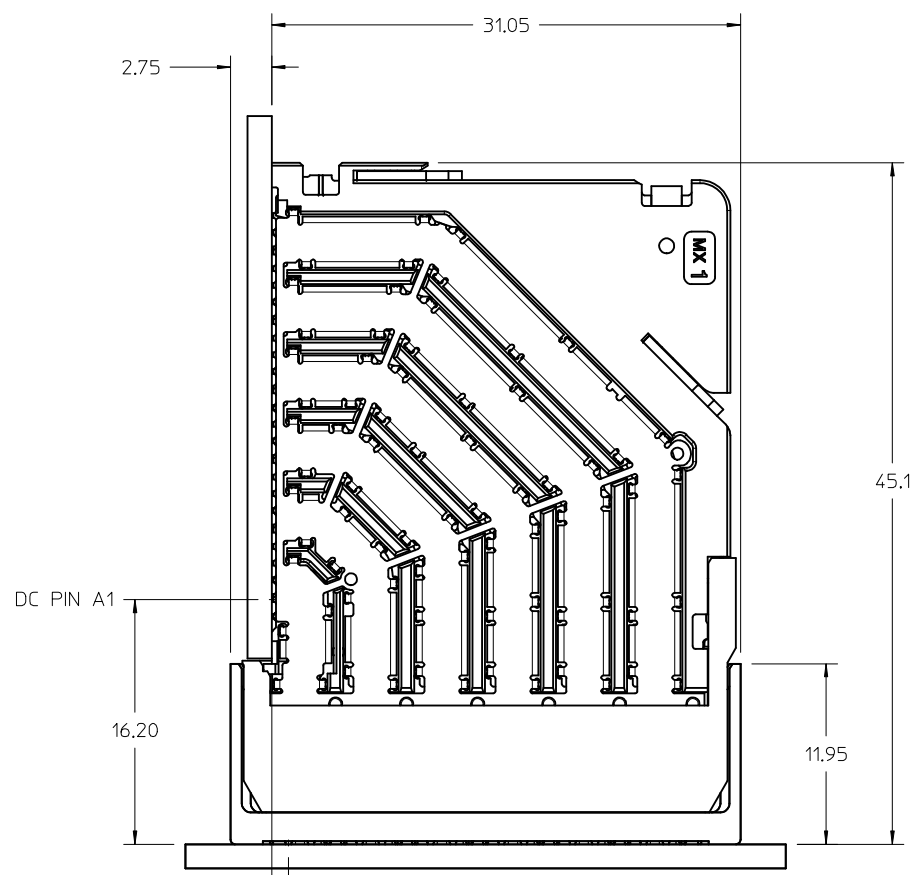


- NOTES:
1. MATERIALS: HOUSING - LIQUID CRYSTAL POLYMER (LCP)  
GLASS-FILLED, UL94V-0  
TERMINALS - HIGH PERFORMANCE COPPER ALLOY
  2. FINISH: 30uIN GOLD IN CONTACT AREA.  
SELECTIVE TIN ON PCB TAILS.  
NICKEL OVERALL.
  3. REFER TO MOLEX PRODUCT SPECIFICATION PS-171320-999 FOR PERFORMANCE SPECIFICATIONS.
  4. THIS PART CONFORMS TO CLASS B REQUIREMENTS OF MOLEX COSMETIC SPEC PS-45499-002.
  5. PRODUCT WILL BE PACKAGED PER PK-78888-087.
  6. SEE SHEETS 2 AND 3 FOR HOLE PATTERN AND MATED PART DIMENSIONS.
  7. MATES WITH IMPEL DC SERIES NUMBER 171400.
  8. REFER TO IMPEL PCB ROUTING GUIDE AS-171320-990 FOR ANTIPAD, ROUTING RECOMMENDATIONS, AND ADDITIONAL PCB INFORMATION.
  9. WHEN STACKING MODULES END TO END, THE MINIMUM COLUMN TO COLUMN SPACING IS 2.65mm.
  10. THE KEEP-OUT ZONE FOR THE BP HOUSING LENGTH INCLUDES THE NECESSARY SPACE REQUIRED FOR THE MATING DAUGHTERCARD HOUSING.

ADDED 12C OPTIONS EC NO: UCP2016-1379 DRW: MLEE01 CHKD: CYLAW APPR: SHLEN	DESCRIPTION 2015/09/09 2015/10/12	QUALITY SYMBOLS	GENERAL TOLERANCES (UNLESS SPECIFIED)		DIMENSION STYLE	SCALE	DESIGN UNITS	THIRD ANGLE PROJECTION		
		▽=0	mm	INCH	MM ONLY	4:1	METRIC	IMPEL 6 PAIR BACKPLANE UNGUIDED ASSEMBLY SALES DRAWING <b>molex</b>		
		▽=0	4 PLACES ± --- ± ---		DRAWN BY	DATE	TITLE			
		▽=0	3 PLACES ± --- ± ---		JLAURX	2012/01/13	IMPEL 6 PAIR BACKPLANE UNGUIDED ASSEMBLY SALES DRAWING			
▽=0	2 PLACES ± 0.13 ± ---		CHECKED BY	DATE	DOCUMENT NO. SD-171395-0001 SHEET NO. 1 OF 4					
▽=0	1 PLACE ± 0.25 ± ---		APPROVED BY	DATE						
		0 PLACE ± ±		JLAURX	2012/11/27	SEE CHART				
		ANGULAR ±1/2°		MATERIAL NO.		THIS DRAWING CONTAINS INFORMATION THAT IS PROPRIETARY TO MOLEX INCORPORATED AND SHOULD NOT BE USED WITHOUT WRITTEN PERMISSION				
		DRAFT WHERE APPLICABLE MUST REMAIN WITHIN DIMENSIONS		SIZE						

MATERIAL NUMBER	NUMBER OF COLUMNS	NUMBER OF DIFF PAIR	DIM "A"	DIM "B"	DIM "C"	DIM "P"	PTH $\phi$
171395-1804	8	48	15.80	13.30	1.10	4.90	0.46±0.05
171395-1805	8	48	15.80	13.30	1.10	5.50	0.46±0.05
171395-1807	8	48	15.80	13.30	1.20	4.90	0.36±0.05
171395-1808	8	48	15.80	13.30	1.20	5.50	0.36±0.05
171395-1104	10	60	19.60	17.10	1.10	4.90	0.46±0.05
171395-1105	10	60	19.60	17.10	1.10	5.50	0.46±0.05
171395-1107	10	60	19.60	17.10	1.20	4.90	0.36±0.05
171395-1108	10	60	19.60	17.10	1.20	5.50	0.36±0.05
171395-1204	12	72	23.40	20.90	1.10	4.90	0.46±0.05
171395-1205	12	72	23.40	20.90	1.10	5.50	0.46±0.05
171395-1207	12	72	23.40	20.90	1.20	4.90	0.36±0.05
171395-1208	12	72	23.40	20.90	1.20	5.50	0.36±0.05
171395-1604	16	96	31.00	28.50	1.10	4.90	0.46±0.05
171395-1605	16	96	31.00	28.50	1.10	5.50	0.46±0.05
171395-1607	16	96	31.00	28.50	1.20	4.90	0.36±0.05
171395-1608	16	96	31.00	28.50	1.20	5.50	0.36±0.05



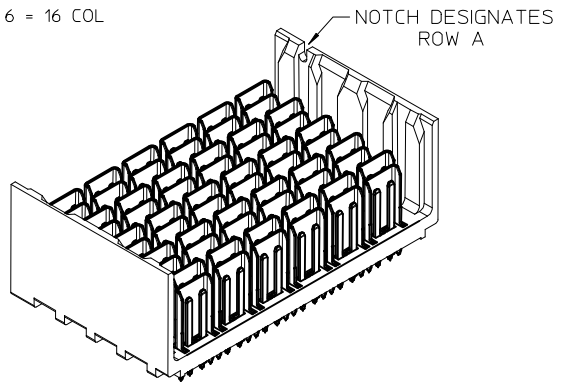
171395-1\*0\*

MODULE TYPE  
1 = UNGUIDED

# OF COLUMNS  
8 = 8 COL  
1 = 10 COL  
2 = 12 COL  
6 = 16 COL

PIN LENGTH (P)  
4 = 4.90 (0.46 PTH)  
5 = 5.50 (0.46 PTH)  
7 = 4.90 (0.36 PTH)  
8 = 5.50 (0.36 PTH)

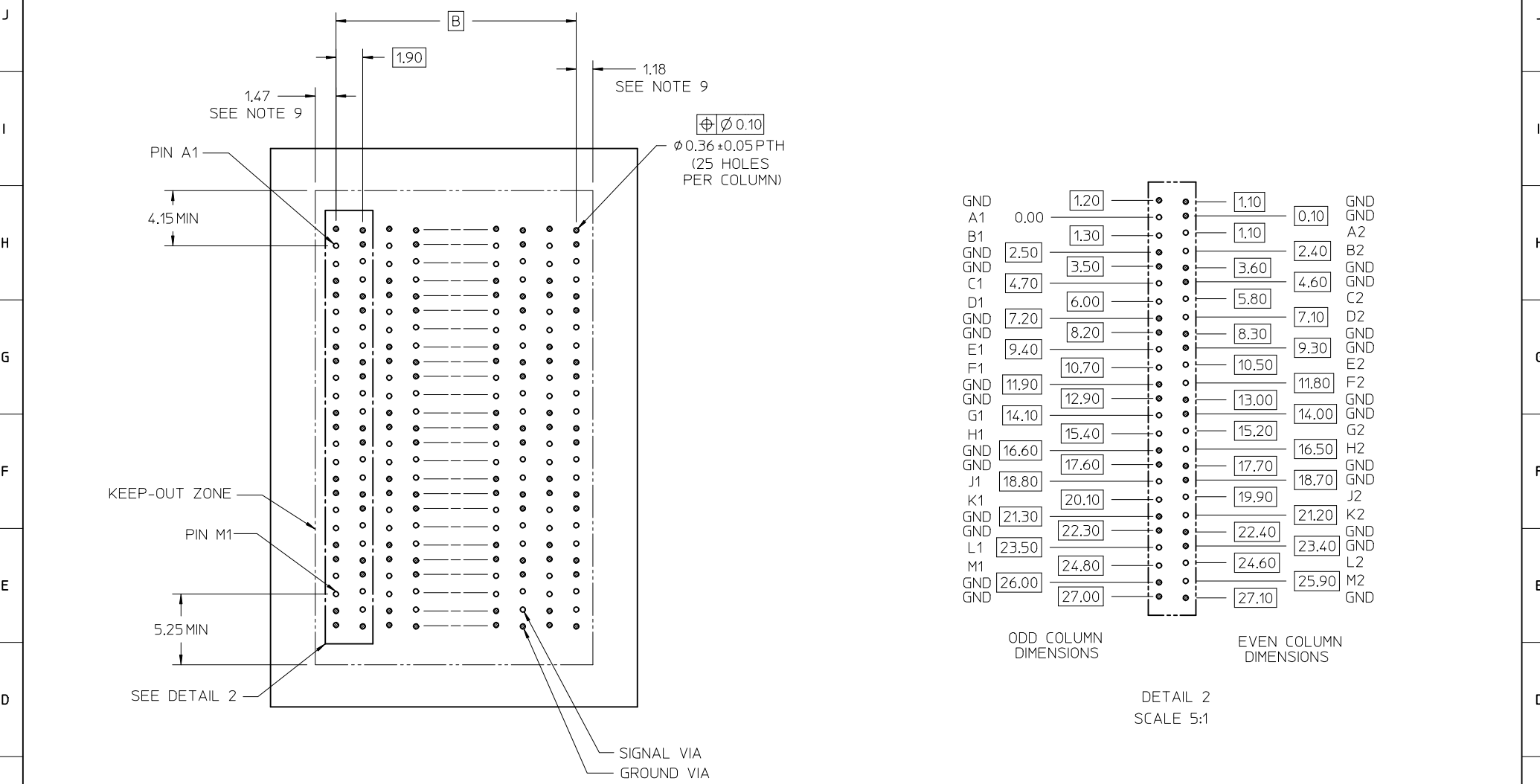
KEY ORIENTATION  
0 = OPEN ENDS



MATED PART DIMENSIONS

SEE SHEET 1 EC NO: UCP2016-1379 DRW: MWLE01 CHKD: CYL JAW APPR: SHLENI 2015/08/09 2015/10/12	QUALITY SYMBOLS	GENERAL TOLERANCES (UNLESS SPECIFIED)	DIMENSION STYLE MM ONLY	SCALE 4:1	DESIGN UNITS METRIC	THIRD ANGLE PROJECTION
	▽=0	mm INCH	DRAWN BY JLAURX	DATE 2012/01/13	TITLE IMPEL 6 PAIR BACKPLANE UNGUIDED ASSEMBLY SALES DRAWING	
	▽=0	4 PLACES ± --- + --- 3 PLACES ± --- ± --- 2 PLACES ± 0.13 ± --- 1 PLACE ± 0.25 ± --- 0 PLACE ± ±	CHECKED BY	DATE	DOCUMENT NO. SD-171395-0001	
	▽=0	ANGULAR ±1/2°	APPROVED BY JLAURX	DATE 2012/11/27	SHEET NO. 2 OF 4	
B3	REV	DRAFT WHERE APPLICABLE MUST REMAIN WITHIN DIMENSIONS	SIZE C	THIS DRAWING CONTAINS INFORMATION THAT IS PROPRIETARY TO MOLEX INCORPORATED AND SHOULD NOT BE USED WITHOUT WRITTEN PERMISSION		





GND	1.20	1.10	GND
A1	0.00	0.10	GND
B1	1.30	1.10	A2
GND	2.50	2.40	B2
C1	3.50	3.60	GND
D1	4.70	4.60	GND
GND	6.00	5.80	C2
E1	7.20	7.10	D2
GND	8.20	8.30	GND
F1	9.40	9.30	GND
GND	10.70	10.50	E2
G1	11.90	11.80	F2
H1	12.90	13.00	GND
GND	14.10	14.00	GND
H1	15.40	15.20	G2
GND	16.60	16.50	H2
J1	17.60	17.70	GND
GND	18.80	18.70	GND
K1	20.10	19.90	J2
GND	21.30	21.20	K2
GND	22.30	22.40	GND
L1	23.50	23.40	GND
M1	24.80	24.60	L2
GND	26.00	25.90	M2
GND	27.00	27.10	GND

ODD COLUMN DIMENSIONS      EVEN COLUMN DIMENSIONS

DETAIL 2  
SCALE 5:1

BACKPLANE HOLE PATTERN  
FOR Ø0.36 PTH  
(CONNECTOR SIDE)

SEE SHEET 1 EC NO: UCP2016-1379 DRAWN: MLEE01 2015/09/09 CHKD: CYLAW APPR: SHLENI 2015/10/12	QUALITY SYMBOLS	GENERAL TOLERANCES (UNLESS SPECIFIED)		DIMENSION STYLE <b>MM ONLY</b>		SCALE <b>5:1</b>	DESIGN UNITS <b>METRIC</b>	THIRD ANGLE PROJECTION
	▽=0	4 PLACES ±	mm	INCH	DRAWN BY JLAURX	DATE 2012/01/13	TITLE <b>IMPEL 6 PAIR BACKPLANE UNGUIDED ASSEMBLY SALES DRAWING</b>	
	▽=0	3 PLACES ±			CHECKED BY	DATE	<b>molex</b> DOCUMENT NO. <b>SD-171395-0001</b> SHEET NO. <b>4 OF 4</b>	
	▽=0	2 PLACES ±0.13			APPROVED BY JLAURX	DATE 2012/11/27		
		1 PLACE ±0.25			MATERIAL NO.		SIZE <b>C</b>	
		0 PLACE ±			ANGULAR ±1/2°		THIS DRAWING CONTAINS INFORMATION THAT IS PROPRIETARY TO MOLEX INCORPORATED AND SHOULD NOT BE USED WITHOUT WRITTEN PERMISSION	
			DRAFT WHERE APPLICABLE MUST REMAIN WITHIN DIMENSIONS					