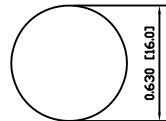
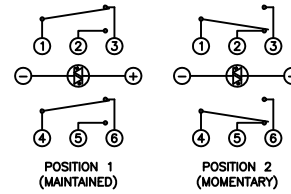


SUGGESTED PANEL CUTOUT



MAXIMUM PANEL THICKNESS: 0.551 [14.0mm]

SCHEMATIC



SPECIFICATIONS

FUNCTION:  
2P2T ON-(ON)

RATING:  
NOM-003-SCFI-2000 (200901C07839):  
2A 48VDC [NOM]

ILLUMINATION VOLTAGE:  
1.8V 20mA

CONTACT RESISTANCE:  
Initial: 50mΩ Max. at 1A 12VDC

INSULATION RESISTANCE:  
1,000MΩ Min. at 500VDC

DIELECTRIC STRENGTH:  
2,000VAC Min. for 1 Minute

ELECTRICAL LIFE:  
50,000 Cycles

MECHANICAL LIFE:  
200,000 Cycles

TEMPERATURE:  
Operating: -20°C to 55°C

INGRESS PROTECTION:  
IP65

APPROVALS:



COLORS AND FINISH

BEZEL:  
Nickel Plated Finish

ACTUATOR:  
Nickel Plated Finish

ILLUMINATION:  
Red (Forward)  
Red (Reverse)

LENS:  
Transparent Red

MARKING:  
None

MATERIALS

BUSHING:  
Nickel Plated Brass (H62)

BASE:  
Polybutylene Terephthalate (PBT)  
Polycarbonate (PC)

ACTUATOR:  
Stainless Steel (304)

ILLUMINATION LENS:  
Polycarbonate (PC)

HARDWARE:  
Nickel Plated Brass (H59)

SEAL:  
Silicone Rubber

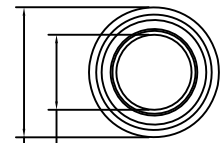
INNER ASSEMBLY:  
Polyoxymethylene (POM)  
Polycarbonate (PC)  
Polybutylene Terephthalate (PBT)  
Silver Plated Brass (H62)  
Beryllium Copper

SPRING:  
Stainless Steel (304)

CONTACTS:  
Silver/Cadmium Oxide (AgCdO)

TERMINALS:  
Silver Plated Brass (H62)

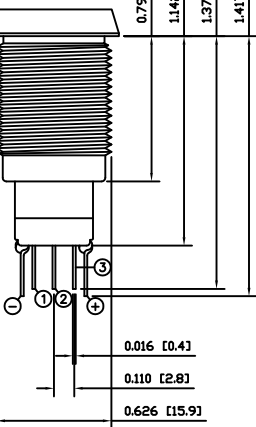
O-RING:  
Silicone Rubber



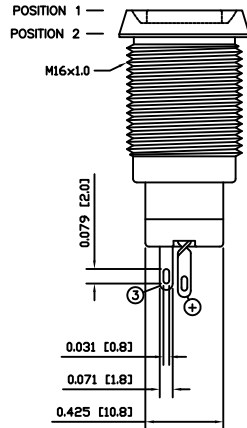
0.709 [18.0]  
0.409 [10.4]

0.791±0.039 [20.1±1.0]  
1.142±0.039 [29.0±1.0]  
1.378±0.039 [35.0±1.0]  
1.417±0.039 [36.0±1.0]

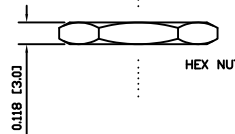
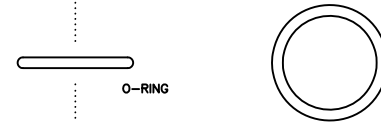
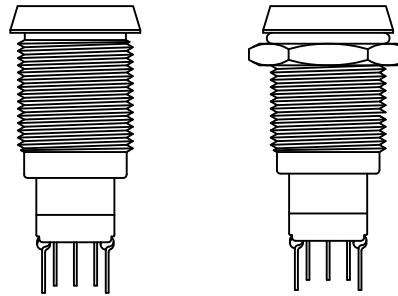
0.146 [3.7]



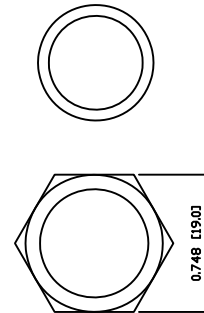
0.016 [0.4]  
0.110 [2.8]  
0.626 [15.9]



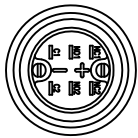
POSITION 1  
POSITION 2  
M16x1.0  
0.079 [2.0]  
0.031 [0.8]  
0.071 [1.8]  
0.425 [10.8]



EXPLODED VIEW



ASSEMBLED VIEW



BODY	A	10/10/20	CAB
COLORS	A	09/07/10	CAB
MATERIALS	A	10/12/10	CAB
SPECIFICATIONS	B	09/09/28	CAB
REFERENCE	REV.	DATE	BY

THE INFORMATION CONTAINED IN THIS DOCUMENT IS PROPRIETARY TO E-SWITCH AND IS NOT TO BE COPIED OR TRANSFERRED

A	INITIAL RELEASE	19505	10/12/10	CAB
REV.	DESCRIPTION	PCR	DATE	DRAWN BY

DIMENSIONS	INCHES [MILLIMETERS]
GENERAL TOLERANCES	±0.008 [±0.2] / ±1'
SCALE	DRAWING NOT TO SCALE

<p>TITLE</p> <p>PV3WG2HONN-311</p>			
ITEM NUMBER	DATE	REVISION	
52-PV3WG2HONN311	DECEMBER 10, 2010	A	