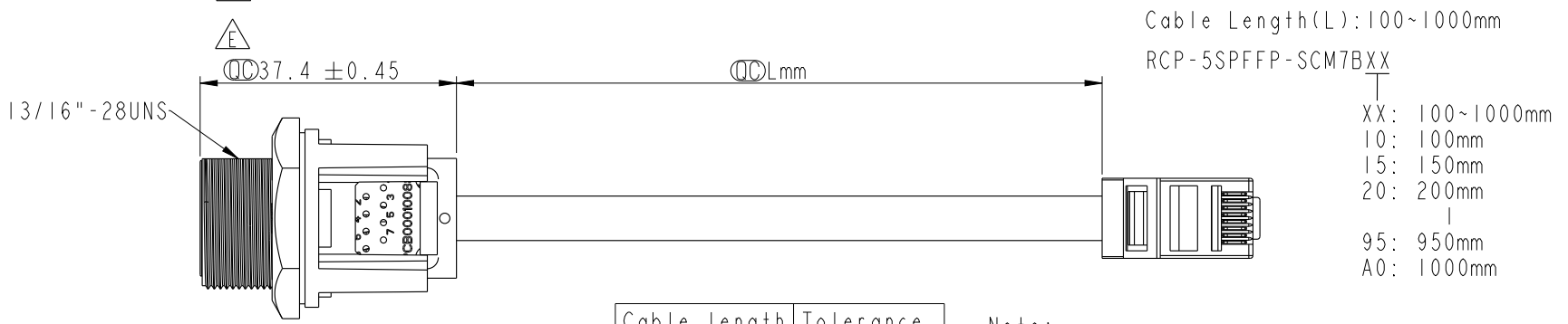
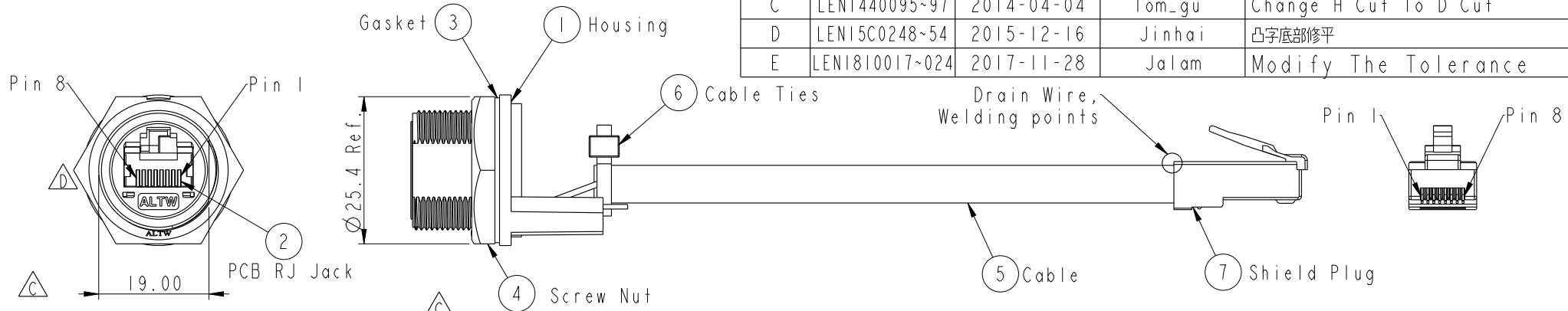


THIS DOCUMENT IS SUBJECT TO CHANGE WITHOUT NOTICE. IT IS CONFIDENTIAL AND A PROPERTY OF Amphenol LTW. DISCLOSURE TO THIRD PARTY HAS TO BE AUTHORIZED BY Amphenol LTW.

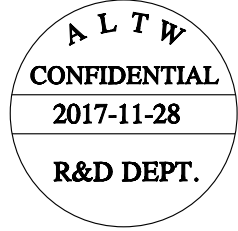
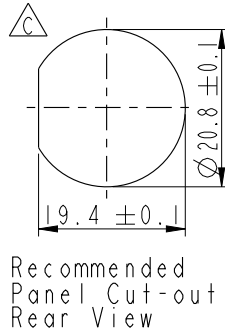
REV.	ECN NO.	DATE	SIGN	DESCRIPTION
C	LEN1440095~97	2014-04-04	Tom_gu	Change H Cut To D Cut
D	LEN15C0248~54	2015-12-16	Jinhai	凸字底部修平
E	LEN1810017~024	2017-11-28	Jalam	Modify The Tolerance



Cable length	Tolerance
0.0~100 mm	±10 mm
101~300 mm	±15 mm
301~1000 mm	±20 mm

- Note:
- \*  $\varnothing$  Important Dimension
  - \* Waterproof Rate : IP67 Mated
  - \* Housing : Nylon+GF,UL 94V-0,BLACK
  - \* Screw Nut : Nylon+GF,BLACK
  - \* Gasket : Silicone,UL 94V-0,Gray.
  - \* PCB: FR-4
  - \* Jack : PBT Polyester UL 94V-0
  - \* Use without Waterproof cap or Dust cap  
For Panel Thickness Max: 4.2mm
  - \* Use with Waterproof cap or Dust cap  
For Panel Thickness Max: 3.0mm
  - \* Screw torsion value range: 8~12kgf-cm

Shield	Drain Wire	接地線	Shield	
8	Brown	棕	8	Twist
7	White/Brown	白/棕	7	
6	Green	綠	6	Twist Twist
5	White/Blue	白/藍	5	
4	Blue	藍	4	Twist
3	White/Green	白/綠	3	
2	Orange	橘	2	Twist
1	White/Orange	白/橘	1	
Jack	Wire Color		Plug	
Pin Out				



UNIT:mm		TITLE	RJ45,C SIZE,MATED WATERPROOF		
TOLERANCE	.X ±0.25	SCALE	1:1	SIZE	A4
.XX ±0.1	.XXX ±0.05	REV.	E	WC-REV.	B.5
ANGLES	±1°	SHEET 1 OF 1			
		①: Inspection item			

**Amphenol LTW**  
安費諾亮泰企業股份有限公司

ITEM NO	RCP-5SPFFP-SCM7BXX	DRAWN BY	Jalam	DATE	2017-11-28
DWG NO	RCP-5SPFFP-SCM7BXX	CHECKED BY	Feng_Li	DATE	2017-11-28
CUSTOMER	ALTW	APPROVED BY	Jerry	DATE	2017-11-28