

| SIGN | DATE | DESCRIPTION | APPROVER |
|------|------|-------------|----------|
| | | | |
| | | | |
| | | | |

THIS IS CAD DRAWING, DO NOT REVISE MANUALLY!!!

SPECIFICATIONS

VOLTAGE & CURRENT: 300 V, 20A
 WITHSTANDING VOLTAGE: AC 2000 V/Min
 INSULATION RESISTANCE: 1000 MΩ OR MORE AT DC 500 V
 TEMPERATURE RANGE: -40 °C ~+105 °C
 SCREW TORQUE VALUE: 8.8 Lb-In.
 WIRE RANGE: 22 - 12 AWG
 1) MOLDED PARTS: THERMOPLASTIC, UL 94 V-0 BLACK
 2) TERMINAL: BRASS, 0.8t, Tin PLATED
 3) TERMINAL SCREWS: STEEL, Ni PLATED, M3

APPROVAL: 

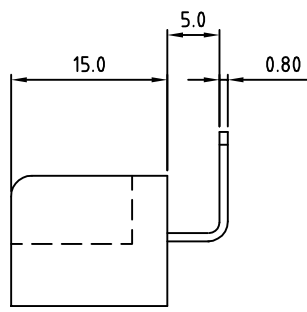
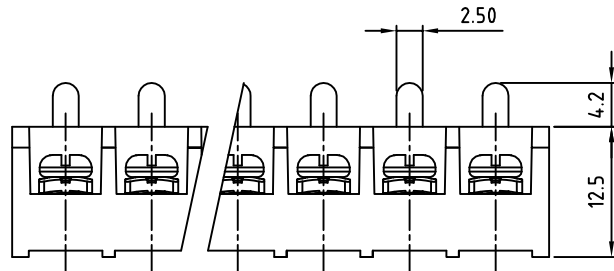
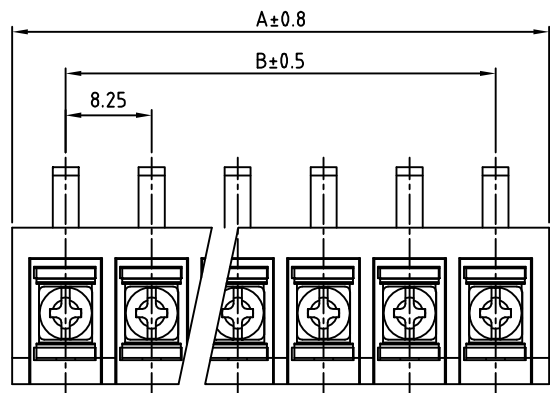
RoHS Compliant

PART NUMBER:

OSTYK335XX030

NO. OF POLES

- 02: 2 POLES
- 03: 3 POLES
- 04: 4 POLES
- ⋮
- 30: 30 POLES



| POLE | 1 | 2 | 3 | 4 | 5 | 6 | 7 | 8 | 9 | 10 | 11 | 12 | 13 | 14 | 15 | 16 |
|------|--------|--------|--------|--------|--------|--------|--------|--------|--------|--------|--------|--------|--------|--------|--------|--------|
| A | | 18.50 | 26.75 | 35.00 | 43.25 | 51.50 | 59.75 | 68.00 | 76.25 | 84.50 | 92.75 | 101.00 | 109.25 | 117.50 | 125.75 | 134.00 |
| B | | 8.25 | 16.50 | 24.75 | 33.00 | 41.25 | 49.50 | 57.75 | 66.00 | 74.25 | 82.50 | 90.75 | 99.00 | 107.25 | 115.50 | 123.75 |
| POLE | 17 | 18 | 19 | 20 | 21 | 22 | 23 | 24 | 25 | 26 | 27 | 28 | 29 | 30 | | |
| A | 142.25 | 150.50 | 158.75 | 167.00 | 175.25 | 183.50 | 191.75 | 200.00 | 208.25 | 216.50 | 224.75 | 233.00 | 241.25 | 249.50 | | |
| B | 132.00 | 140.25 | 148.50 | 156.75 | 165.00 | 173.25 | 181.50 | 189.75 | 198.00 | 206.25 | 214.50 | 222.75 | 231.00 | 239.25 | | |

THESE DRAWINGS AND SPECIFICATIONS ARE THE PROPERTY OF ON-SHORE TECHNOLOGY, INC. AND SHALL NOT BE REPRODUCED, COPIED OR USED IN ANY MANNER WITHOUT THE PRIOR WRITTEN CONSENT OF ON-SHORE TECHNOLOGY, INC.



| | | | | | |
|-----------------------|----------------------|-------------------|-------------------|--------------|---|
| TITLE | | OSTYK-335 Series | | | |
| PART NO. | OSTYK335XX030 | DWG NO. | OSTYK335XX030.DWG | | |
| APPROVED | CHECKED | DESIGNED | DRAWN | CUST NO. | Tolerance |
| Shi Jun 2007.07.18 | Seamus 2007.07.18 | LUCY 2007.7.18 | LUCY 2007.7.18 | | X. ±0.50 X.X ±0.30 X.XX ±0.10 X° ±1° |
| | | | | UNIT: mm | |
| | | | | SCALE: NONE | |
| | | | | SHEET: 01/01 | REV.: B |