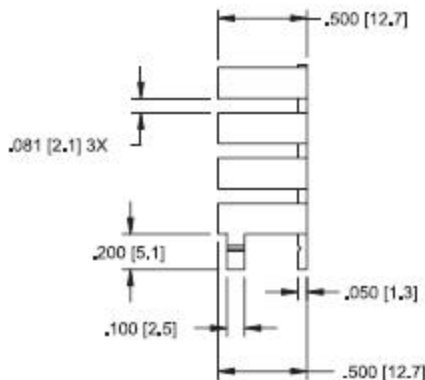
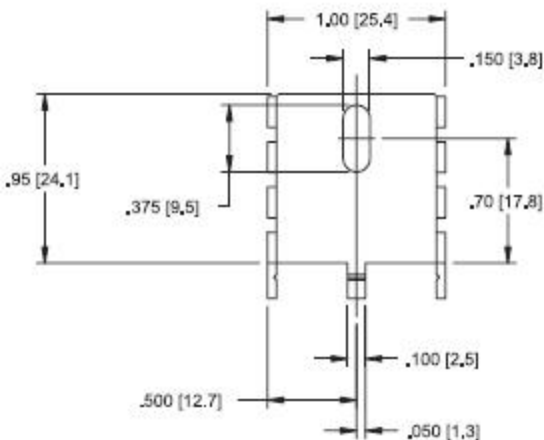


wakefield-vette

| Standard P/N | Height Above PC Board in. (mm) | Maximum Footprint in. (mm) | Thermal Performance at Typical Load | |
|--------------|--------------------------------|----------------------------|-------------------------------------|-------------------|
| | | | Natural Convection | Forced Convection |
| 286DBE | .95 (24.1) | 1.00 (25.4) x .50 (12.7) | 65°C rise @ 4W | 9.0°C/W @ 200LFM |

MECHANICAL DIMENSIONS



NATURAL AND FORCED CONVECTION CHARACTERISTICS

