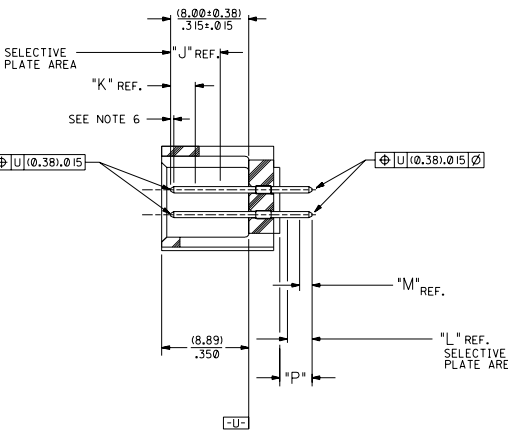
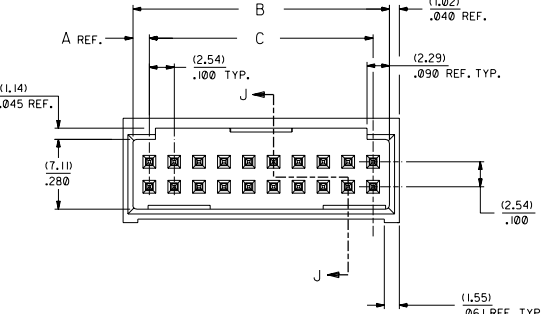
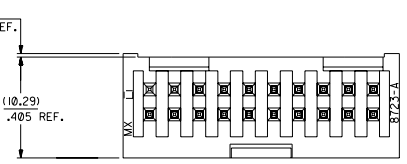
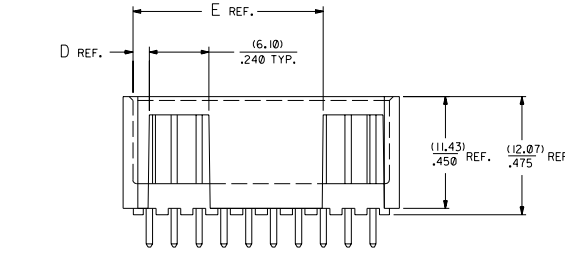


RECOMMENDED P.C. BOARD HOLE LAYOUT



SECTION J-J



- NOTES:**
- 1- 20 CIRCUIT SIZE SHOWN FOR ILLUSTRATION PURPOSES.
 - 2- PIN PUSHOUT FORCE: (17.79 N)/4 LBS.
 - 3- PINS MUST MEET SOLDERABILITY SPEC. MIL-STD-202 METHOD 208B.
 - 4- WINDOW NOT AVAILABLE ON 6 AND 8 CIRCUIT SIZE.
 - 5- FOR CHARTED DIMENSIONS AND ASSEMBLY NO.S NOT SHOWN ON THIS SHEET - SEE SHEET 2.
 - 6- ROW TO ROW PIN HEIGHT VARIATION MUST NOT EXCEED (0.13)/.005 IN.
 - 7- PRODUCT CONFORMS TO PS-8723.

CKT.	8723				
	DIM. 'A'	DIM. 'B'	DIM. 'C'	DIM. 'D'	DIM. 'E'
06	(1.68) .066	(8.43) .332	(5.08) .200	(1.68) .066	
08	(1.68) .066	(10.97) .432	(7.62) .300	(1.68) .066	
10	(1.68) .066	(13.51) .532	(10.16) .400	(4.22) .166	
12	(1.68) .066	(16.05) .632	(12.70) .500	(4.22) .166	
14	(1.68) .066	(18.59) .732	(15.24) .600	(6.76) .266	
16	(1.68) .066	(21.13) .832	(17.78) .700	(6.76) .266	
18	(1.68) .066	(23.67) .932	(20.32) .800	(9.30) .366	
20	(1.68) .066	(26.21) 1.032	(22.86) .900	(1.68) .066	(19.46) .766
22	(1.68) .066	(28.75) 1.132	(25.40) 1.000	(1.68) .066	(22.00) .866
24	(1.68) .066	(31.29) 1.232	(27.94) 1.100	(1.68) .066	(24.54) .966
26	(1.68) .066	(33.83) 1.332	(30.48) 1.200	(1.68) .066	(27.08) 1.066
28	(1.68) .066	(36.37) 1.432	(33.02) 1.300	(1.68) .066	(29.62) 1.166
30	(1.68) .066	(38.91) 1.532	(35.56) 1.400	(1.68) .066	(32.16) 1.266
32	(1.68) .066	(41.45) 1.632	(38.10) 1.500	(1.68) .066	(34.70) 1.366
34	(1.68) .066	(43.99) 1.732	(40.64) 1.600	(1.68) .066	(37.24) 1.466
36	(1.68) .066	(46.53) 1.832	(43.18) 1.700	(1.68) .066	(39.78) 1.566
38	(1.68) .066	(49.07) 1.932	(45.72) 1.800	(1.68) .066	(42.32) 1.666
40	(1.68) .066	(51.61) 2.032	(48.26) 1.900	(1.68) .066	(44.86) 1.766
42	(1.68) .066	(54.15) 2.132	(50.80) 2.000	(1.68) .066	(47.40) 1.866
44	(1.68) .066	(56.69) 2.232	(53.34) 2.100	(1.68) .066	(49.94) 1.966
46	(1.68) .066	(59.23) 2.332	(55.88) 2.200	(1.68) .066	(52.48) 2.066
48	(1.68) .066	(61.77) 2.432	(58.42) 2.300	(1.68) .066	(55.02) 2.166
50	(1.68) .066	(64.31) 2.532	(60.96) 2.400	(1.68) .066	(57.56) 2.266
52	(1.68) .066	(66.85) 2.632	(63.50) 2.500	(1.68) .066	(60.10) 2.366
54	(1.68) .066	(69.39) 2.732	(66.04) 2.600	(1.68) .066	(62.64) 2.466
56	(1.68) .066	(71.93) 2.832	(68.58) 2.700	(1.68) .066	(65.18) 2.566
58	(1.68) .066	(74.47) 2.932	(71.12) 2.800	(1.68) .066	(67.72) 2.666
60	(1.68) .066	(77.01) 3.032	(73.66) 2.900	(1.68) .066	(70.26) 2.766
62	(1.68) .066	(79.55) 3.132	(76.20) 3.000	(1.68) .066	(72.80) 2.866
64	(1.68) .066	(82.09) 3.232	(78.74) 3.100	(1.68) .066	(75.34) 2.966
66	(1.68) .066	(84.63) 3.332	(81.28) 3.200	(1.68) .066	(77.88) 3.066
68	(1.68) .066	(87.17) 3.432	(83.82) 3.300	(1.68) .066	(80.42) 3.166
70	(1.68) .066	(89.71) 3.532	(86.36) 3.400	(1.68) .066	(82.96) 3.266
72	(1.68) .066	(92.25) 3.632	(88.90) 3.500	(1.68) .066	(85.50) 3.366

MATERIAL:
SHROUDED WAFER: GLASS FILLED POLYESTER, 94V-0; COLOR: BLACK.
PINS: PHOSPHOR BRONZE,
SEE SHEET 2 FOR FINISHES.

ASSEMBLY STYLE "A" AND "B"

7	U	CHD WINDOW NOTES	PER ECR NO U30316	05-04-93	B.S.
6	T	ADD WDG LATCH NOTE	PER ECR NO U30316	05-04-93	B.S.
5	R2	ADD WDG LATCH NOTE	PER ECR NO U30316	05-04-93	B.S.
4	T	CHANGED MATERIAL	PER ECR NO U30316	05-04-93	B.S.
3	R2	REVISED A REDRAWN	PER ECR NO U21073	05-29-92	B.S.
2	T	ADD WDG LATCH NOTE	PER ECR NO U30316	05-04-93	B.S.
1	U	ADD WDG LATCH NOTE	PER ECR NO U30316	05-04-93	B.S.

DIMENSIONS SHOWN METRIC INCH
 UNLESS OTHERWISE SPECIFIED
 1 P.L. IN. ± .005
 2 P.L. IN. ± .01 ± .013
 1 P.L. IN. ± .025
 DIMENSIONS APPLICABLE MUST BEADY WITH DIMENSIONS
 DIM. RB DIM. D. DIM. D. DIM. D. DIM. D. DIM. D.
 DIM. RB DIM. D. DIM. D. DIM. D. DIM. D. DIM. D.
 DIM. RB DIM. D. DIM. D. DIM. D. DIM. D. DIM. D.

MFG. SH. REV. LTR. REVISIONS
 SALES ASSEMBLY
 WAFER - STRAIGHT MT. FULLY SHROUDED
 .100 GRID - FOR USE W/ .025 SQ. PINS
 WITH .066 END WALLS
 MOLEX INCORPORATED
 DATE 12/92/07/17
 SEE CHART SDA-8723-*****
 FILE NO. 58723A11
 SCALE 4:1

