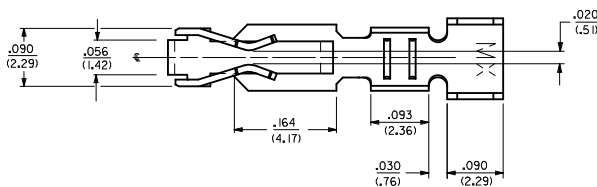
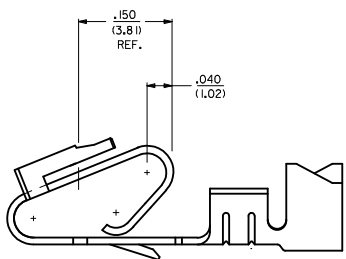


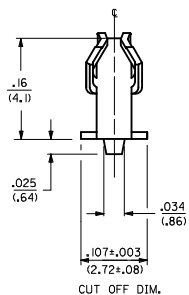
ALTERNATE GEOMETRY
SEE NOTE 10



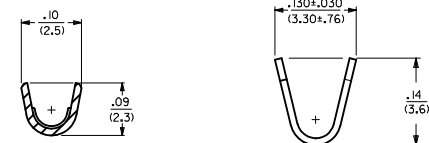
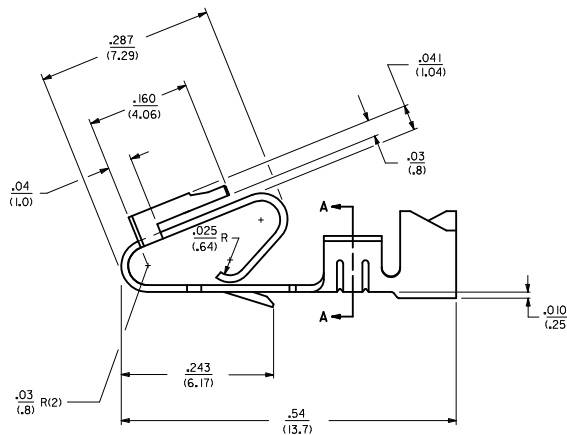
- NOTES:
 1. MATERIAL: SEE LEGEND
 2. FINISH:
 909 - OVERALL HOT TIN DIP: .000100/(0.00254) MIN.
 154 - OVERALL TIN: .000100/(0.00254) MIN. OVER .000050/(0.00127) MIN. NICKEL.
 555 - SELECT HARD GOLD: .000015/(0.00038) MIN. OVERALL NICKEL: .000030/(0.00076) MIN.
 558 - SELECT HARD GOLD: .000030/(0.00076) MIN. OVERALL NICKEL: .000050/(0.00127) MIN.
 OVERALL HARD GOLD FLASH: .000002/(0.00005) MIN.
 561 - SELECT HARD GOLD: .000030/(0.00076) MIN. OVERALL NICKEL: .000050/(0.00127) MIN.
 3. PRODUCT SPECIFICATION: PS-40-02
 4. PACKAGING SPECIFICATION: CHAIN FORM: SEE PK-6838-001
 LOOSE FORM: SEE PK-2759-001
 5. TERMINAL FOR USE IN HOUSING SERIES 6442 AND 41695.
 6. SEE 7258 SERIES FOR THIS PART WITH CRIMP FOR 22-26 AWG. WIRE.
 7. CRIMP FOR 18 TO 20 GA. WIRE WITH MAX. INSULATION DIA. OF .100(2.79).
 STRIP LENGTH OF .125/100 / (3.18/2.54)
 8. DIMENSIONS GIVEN ACROSS CENTERLINES ARE SYMMETRICAL ABOUT THOSE CENTERLINES WITHIN HALF THE TOTAL TOLERANCE.
 9. THIS PART CONFORMS TO CLASS B REQUIREMENTS OF COSMETIC SPECIFICATION PS-45499-002.
 10. ALTERNATE GEOMETRY PRESENT ON SOME PART NUMBERS. SEE SHEET 2.



SELECTIVE PLATING LOCATION



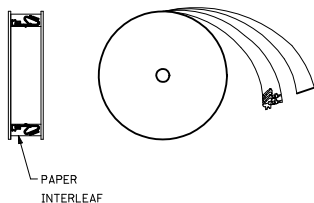
CUT OFF DIM.



SECTION A-A

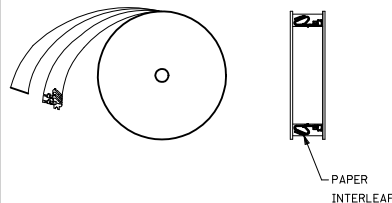
- LEGEND: 6838- ()
- WINDING
 - A= PER DETAIL A
 - BLANK= PER DETAIL B
 - FORM
 - BLANK= CHAIN
 - L= LOOSE
 - PLATING
 - SEE NOTE 2
- MATERIAL:
 (.271/.0106 THK
 BLANK=BRASS
 A=PHOS BRONZE

WINDING DETAIL 'A'



PAPER INTERLEAF

WINDING DETAIL 'B'



PAPER INTERLEAF

102 TO 154 PLTIG. IEC NO. UCF2012-1821 DRAWN BY: DRW/MK/STROH 2012/01/04 CHECKED BY: CHY/DK/KIPPER 2012/01/05 APPROVED BY: APPR/FJ/SMITH 2012/02/02 AR	QUALITY SYMBOLS	GENERAL TOLERANCES (UNLESS SPECIFIED)	DIMENSION STYLE	SCALE	DESIGN UNITS	THIRD ANGLE PROJECTION	
	∇=0 ∇=0 ∇=0	mm INCH 4 PLACES ± --- ± --- 3 PLACES ± --- ± .010 2 PLACES ± 0.25 ± .015 1 PLACE ± 0.36 ± --- ANGULAR ±1/2°	IN/MM DRAWN BY: GUZIK DATE: 11/15/89 CHECKED BY: PATEL DATE: 11/15/89 APPROVED BY: LENZ DATE: 11/15/89	---	---	INCH	MOLEX INCORPORATED SD-6838
	DRAFT WHERE APPLICABLE MUST REMAIN WITHIN DIMENSIONS	MATERIAL NO. SEE CHART SIZE D	DOCUMENT NO. SD-6838 1 OF 2	TRIFURCON TERMINAL CRIMP TYPE, .156 CENTERS 18 TO 20 AWG WIRE			
	THIS DRAWING CONTAINS INFORMATION THAT IS PROPRIETARY TO MOLEX INCORPORATED AND SHOULD NOT BE USED WITHOUT WRITTEN PERMISSION						

20 19 18 17 16 15 14 13 12 11 10 9 8 7 6 5 4 3 2 1

6838-(*)**

PART NO.	ENG. NO.	
08-50-0187	6838-(P909)	SEE NOTE 1
08-50-0189	6838-(P909)L	SEE NOTE 1
08-50-0275	6838-(P909)-A	

6838-A(*)**

PART NO.	ENG. NO.	
08-58-0187	6838-A(P558)	
08-58-0189	6838-A(P558)L	
08-52-0112	6838-A(P909)	SEE NOTE 1
08-52-0113	6838-A(P909)L	SEE NOTE 1
08-50-0024	6838-A(154)	
08-50-0251	6838-A(154)L	
08-58-0105	6838-A(P555)	
08-58-0106	6838-A(P555)L	
08-58-0110	6838-A(P56 I)	SEE NOTE 1
08-58-0111	6838-A(P56 I)L	SEE NOTE 1
08-58-0118	6838-A(56 I)	
08-58-0119	6838-A(56 I)L	

NOTES:

1. PART MANUFACTURED WITH ALTERNATE GEOMETRY. SEE SHEET 1.

SEE SHEET 1 IEC NO: UCF2012-1821 DRAWN BY: DRW:MMSTROH 2012/01/04 CHECKED BY: CHY:KHK/PPER 2012/01/05 APPR:FSM/TH 2012/02/02	QUALITY SYMBOLS	GENERAL TOLERANCES (UNLESS SPECIFIED)	DIMENSION STYLE	SCALE	DESIGN UNITS	THIRD ANGLE PROJECTION
	▽=0	4 PLACES ± mm ± INCH	IN/MM	---	INCH	☉
	▽=0	3 PLACES ± mm ± INCH				
	▽=0	2 PLACES ± mm ± INCH				
		1 PLACE ± mm ± INCH				
		ANGULAR ±1/2°				
		DRAFT WHERE APPLICABLE MUST REMAIN WITHIN DIMENSIONS				
			DRAWN BY DATE	CHECKED BY DATE	TITLE	
			GUZIK 11/15/89	PATEL 11/15/89	TRIFURCON TERMINAL CRIMP TYPE, .156 CENTERS 18 TO 20 AWG WIRE	
			APPROVED BY DATE	MATERIAL NO.		
			LENZ 11/15/89	SEE CHART		
				DOCUMENT NO.		
				SD-6838		
				SHEET NO.		
				2 OF 2		
			THIS DRAWING CONTAINS INFORMATION THAT IS PROPRIETARY TO MOLEX INCORPORATED AND SHOULD NOT BE USED WITHOUT WRITTEN PERMISSION			

19 18 17 16 15 14 13 12 11 10 9 8 7 6 5 4 3 2 1