

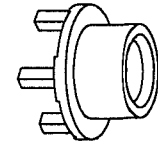
NOTES:

1. MATERIAL AND FINISH (PLATING THICKNESS IN MICRO-INCHES):  
 BODY - PHOSPHOR BRONZE, GOLD PLATING  
 CONTACT - BERYLLIUM COPPER, GOLD PLATING  
 INSULATOR - PEEK, NATURAL
  2. ELECTRICAL:  
 A. IMPEDANCE: 50 OHM  
 B. DIELECTRIC WITHSTANDING VOLTAGE: 500 VRMS, MIN.
  3. MECHANICAL:  
 A. DURABILITY: 500 CYCLES MIN.  
 B. TEMPERATURE RANGE: -65°C TO +165°C
  4. PACKAGING:  
 A. PACKAGE CONNECTOR AS PER ROUTING INSTRUCTIONS.  
 B. MARK BAG OR TAG "SMP-MSLD-PCT-3 YYWW"  
 C. PACKAGING MUST BE PREVENTIVE OF ANY DAMAGES DURING SHIPPING AND HANDLING
5. 2 X PRE-TIN SQ. LEGS AND (Ø0.28) CONTACT POST WITH 63/37 Sn/Pb SOLDER, ACHIEVING APPROX. UNIFORM THICKNESS BUILD UP. A SOLDER-FREE REGION EXTENDING NO MORE THAN 0.76 FROM PWB MATING SURFACE IS PERMISSIBLE.

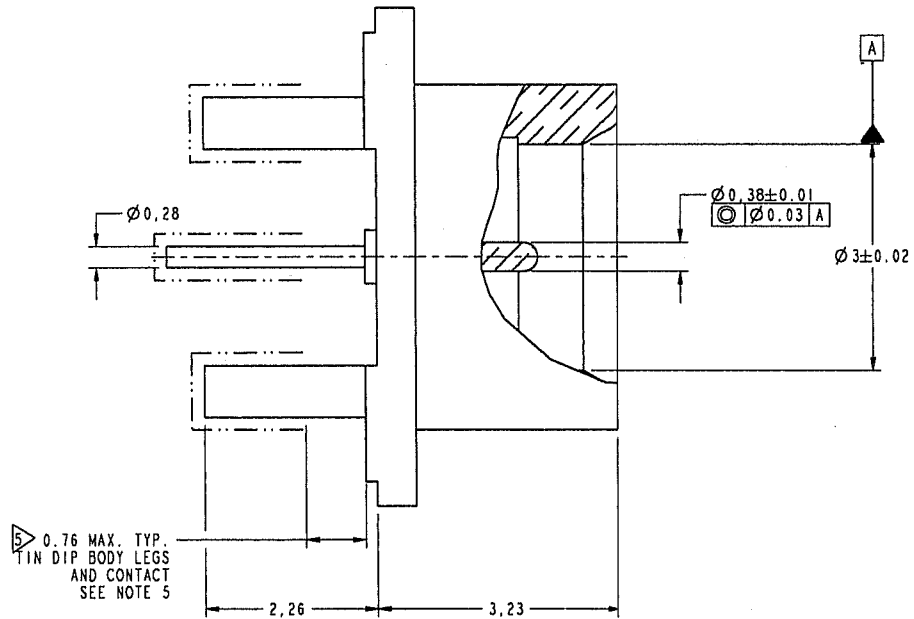
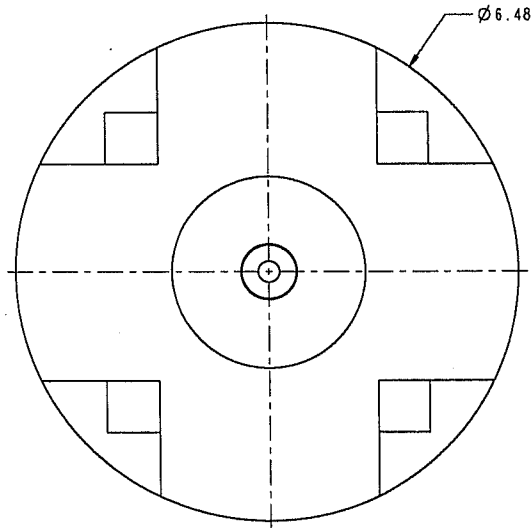
THIRD ANGLE PROJ.

REVISIONS

REV	DESCRIPTION	DATE	ECO	APPR
A	RELEASE TO MFG	22-Nov-07		JC



SCALE 4.000



**CUSTOMER OUTLINE DRAWING**

ALL OTHER SHEETS ARE FOR INTERNAL USE ONLY

UNLESS OTHERWISE SPECIFIED, DIMENSIONS ARE IN METRIC AND TOLERANCES ARE:  
 0.5 - 6mm ±0.1mm    6 - 30mm ±0.2mm    30 - 120mm ±0.3mm    ANGLES ±1°

NOTICE - These drawings, specifications, or other data (1) are, and remain the property of Amphenol corp. (2) must be returned upon request; and (3) are confidential and not to be disclosed to any person other than those to whom they are given by Amphenol Corp. The furnishing of these drawings, specifications, or other data by Amphenol Corp., or to any other person to anyone for any purpose is not to be regarded by implication or otherwise in any manner licensing, granting rights to permitting such holder or any other person to manufacture, use or sell any product, process or design, patented or otherwise, that may in any way be related to or disclosed by said drawings, specifications, or other data.

MATERIAL	DRAWN <i>Jeky</i>	DATE 22-Nov-07	TITLE SMP TYPE LIMITED DETENT PCB THRU HOLES			Amphenol RF Danbury CT USA, Taiwan, Taiwan, Shenzhen, China www.amphenolrf.com	
	ENGINEER <i>Gissy</i>	DATE 22-Nov-07					
REFERENCE EAR #1955 AND 615X-2227-300	APPROVED <i>[Signature]</i>	DATE 22-Nov-07	SCALE: 15.0:1.0 SHEET 2 OF 2			DRAWING NO. SMP-MSLD-PCT-3	
CONFIGURATION LEVEL: Release	CAD FILE I:\SMP\SMP-MSLD-PCT-3	DWG SIZE B	CODE 10 74868	REV A	ITEM NO. SMP-MSLD-PCT-3		
FINISH				PART NO. SMP-MSLD-PCT-3			