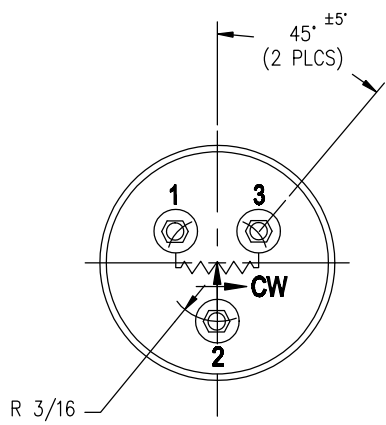
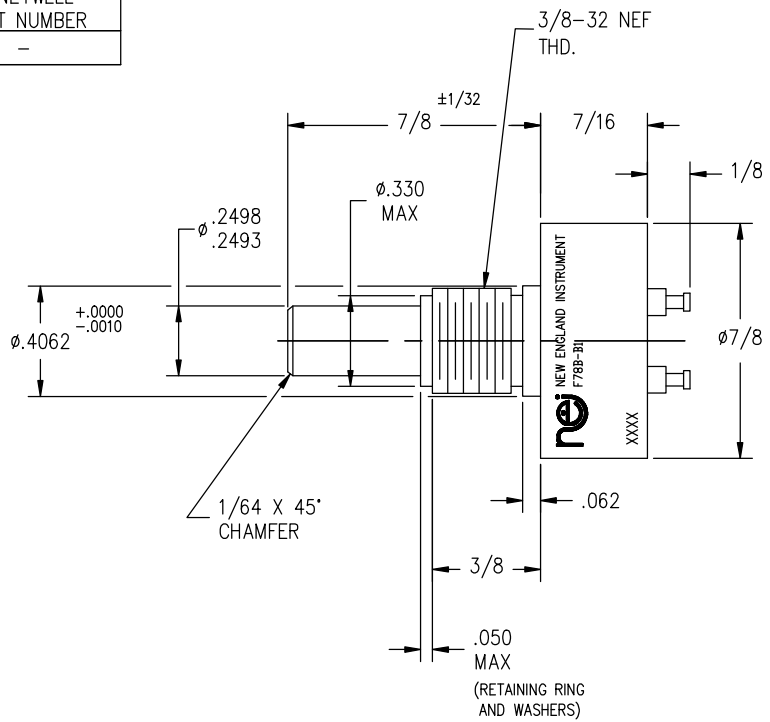


HONEYWELL PART NUMBER
-

REV	DOCUMENT	CHANGED BY	CHECK
A	0084792	BNR	13DEC11



SPECIFICATIONS

ELECTRICAL PARAMETERS

Resistance TABLE 1 ±10%
 Independent Linearity A=±1.0% B=±0.5% C=±0.25%
 Theoretical Electrical Angle 340°
 Output Smoothness A=0.5% B=0.25% C=0.15%
 per MIL-R-39023
 Dielectric Withstanding Voltage 750 VRMS
 Insulation Resistance 1000 Megohms Min. @ 500 VDC
 End Voltage 1% MAX.

MECHANICAL PARAMETERS

Mechanical Travel 360° CONTINUOUS
 Starting Torque 1.0 IN-OZ MAX
 (over Theo. Ele. Angle)
 End Play 0.005 MAX

XXXX = DATE CODE

RESISTANCE CODE	RESISTANCE
501	500
102	1000
202	2000
502	5000
103	10000
203	20000
503	50000
104	100000

DESIGN UNITS: INCH TOLERANCES UNLESS NOTED: FRACTIONS ± 1/64 NO PLACES X ± - ONE PLACE .X ± - TWO PLACE .XX ± - THREE PLACE .XXX ± .005 ANGLES X ± 2°	DRAWN	M.A.COTE	20AUG96	Honeywell				
	CHECK	R.THORNTON	27SEP96					
	THIS DRAWING COVERS A PROPRIETARY ITEM AND IS THE PROPERTY OF HONEYWELL. THIS DRAWING IS NOT TO BE COPIED OR USED WITHOUT THE PERMISSION OF HONEYWELL.				TITLE PRODUCT DEFINITION DRAWING TYPE NO F78B-B1			
	INTERPRET PER ASME Y14.5M-1994 OTHER HONEYWELL ENGINEERING STANDARDS MAY APPLY				SIZE	TYPE	CAGE CODE	DRAWING NAME
THIRD ANGLE PROJECTION 				B	E	08815	F78B-B1-00	A
AUTOCAD 2D				SCALE	NONE		SHEET	1 OF 1