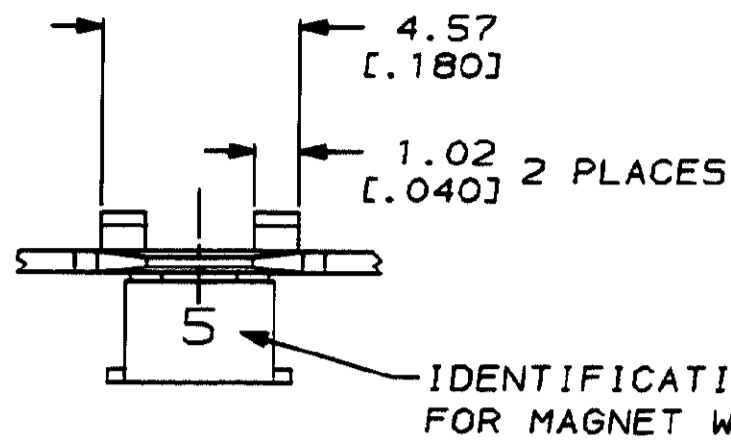
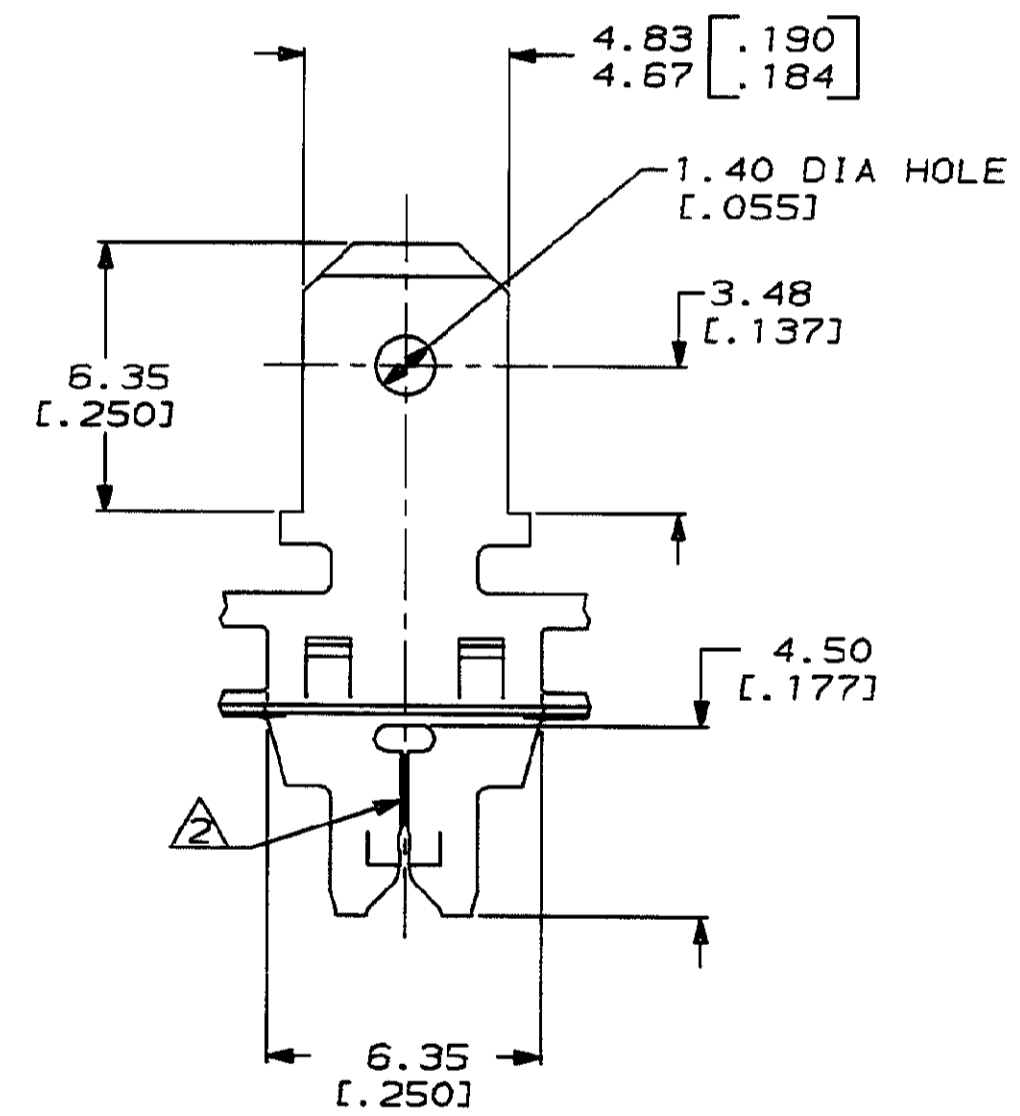
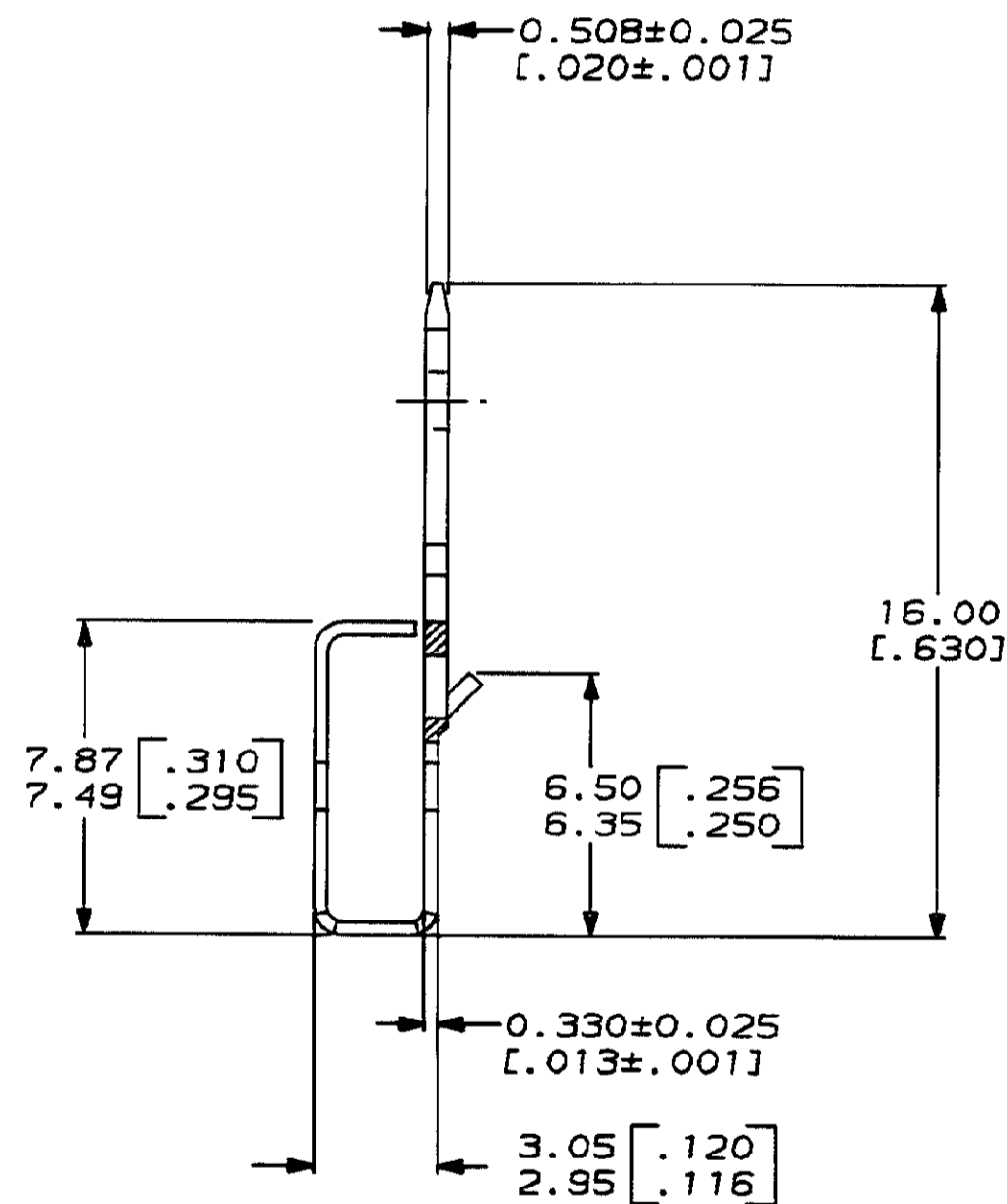
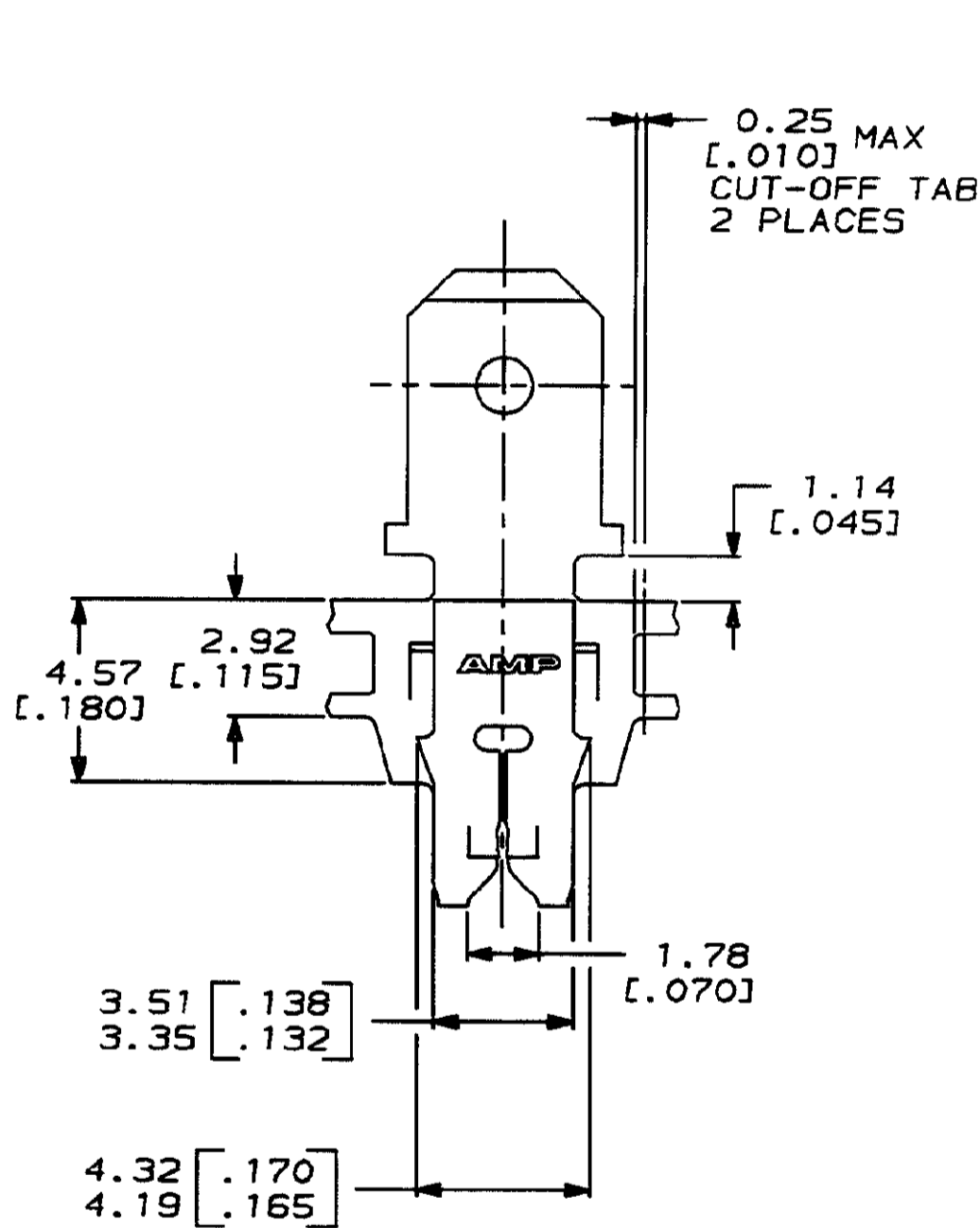


THIS DRAWING IS UNPUBLISHED. RELEASED FOR PUBLICATION .19
 © COPYRIGHT 19 BY AMP INCORPORATED. ALL INTERNATIONAL RIGHTS RESERVED.

LOC	DIST	ZONE	LTR	REVISIONS	DATE	APPD
AF	50		A	REL TO PRODUCTION 0710-0037-94	04/APR/94	MF/NN



1 CONTINUOUS STRIP ON REELS WITH TERMINALS LOCATED ON 8.38±0.08 [.330±.003] CENTERS.
 ⚠ SLOTTED TERMINALS EITHER A SINGLE OR DOUBLE MAGNET WIRES OF THE SAME TYPE AND SIZE.
 COPPER RANGE: 0.23-0.32mm [#31-#28] AWG.



63760

63760-1
 PART NO

DO NOT SCALE PRINT. UNLESS SPECIFIED DIMENSIONS IN mm [INCHES] TOLERANCES ON: 2 PLC DEC ± 0.25 [.010] 3 PLC DEC ± - ANGLES ± -	DR 04/DEC/93 MICHAEL S. FEHER CHK 06/DEC/93 PHILLIP M. FORTNEY APPD 07/DEC/93 NELSON E. NEFF APPD 07/DEC/93 TERRY L. SHUTTER	NAME TAB, 4.75 [.187] FASTON™ MAG-MATE™
MATERIAL 4M PRE-MILLED BRASS	PRODUCT SPEC 108-2012	SIZE C
FINISH 0.002032 [.000080] MIN TIN PER MIL-T-10727	APPLICATION SPEC 114-2094	CAGE CODE 00779
	WEIGHT -	DRAWING NO C=63760
		SCALE 6:1
		SHEET 1 OF 1

THIS DRAWING IS A CONTROLLED DOCUMENT FOR AMP INCORPORATED. IT IS SUBJECT TO CHANGE AND THE CONTROLLING ENGINEERING ORGANIZATION SHOULD BE CONTACTED FOR THE LATEST REVISION.