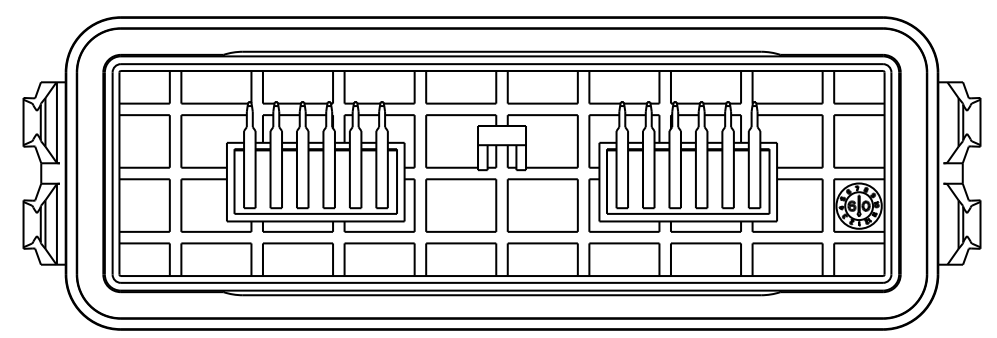
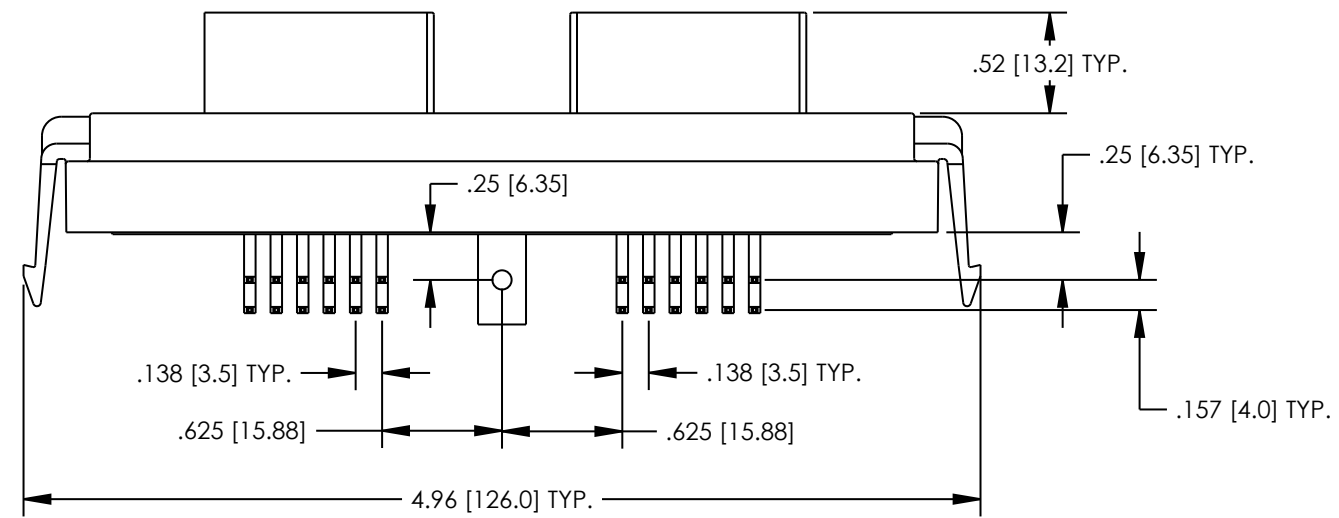
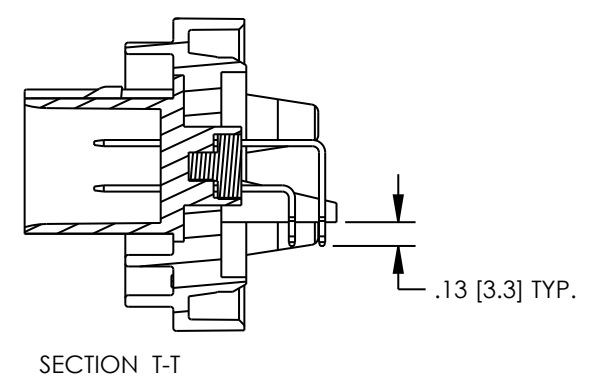
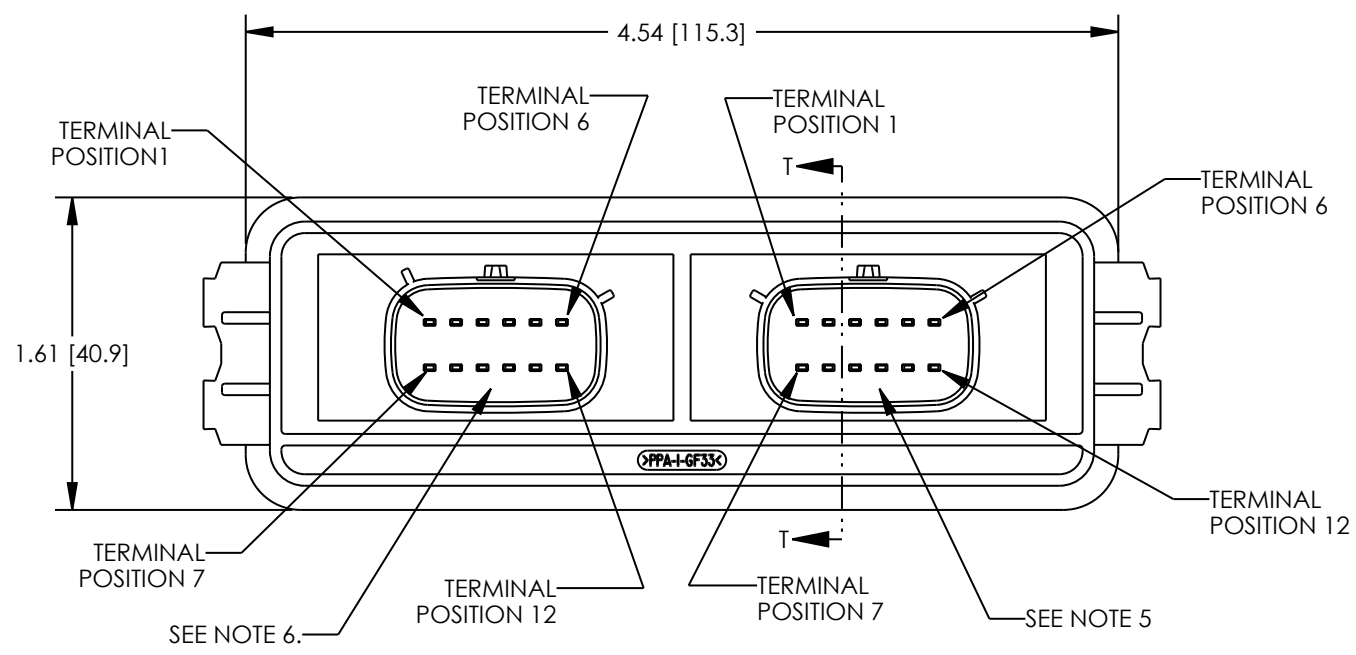


| DRAWING REVISIONS<br>(RELEASE DATE ON FILE) |                 |     |               |
|---|-----------------|-----|---------------|
| REV   | DOCUMENT        | APP | APPROVAL DATE |
| A   | INITIAL RELEASE | KR  | 7/28/14       |

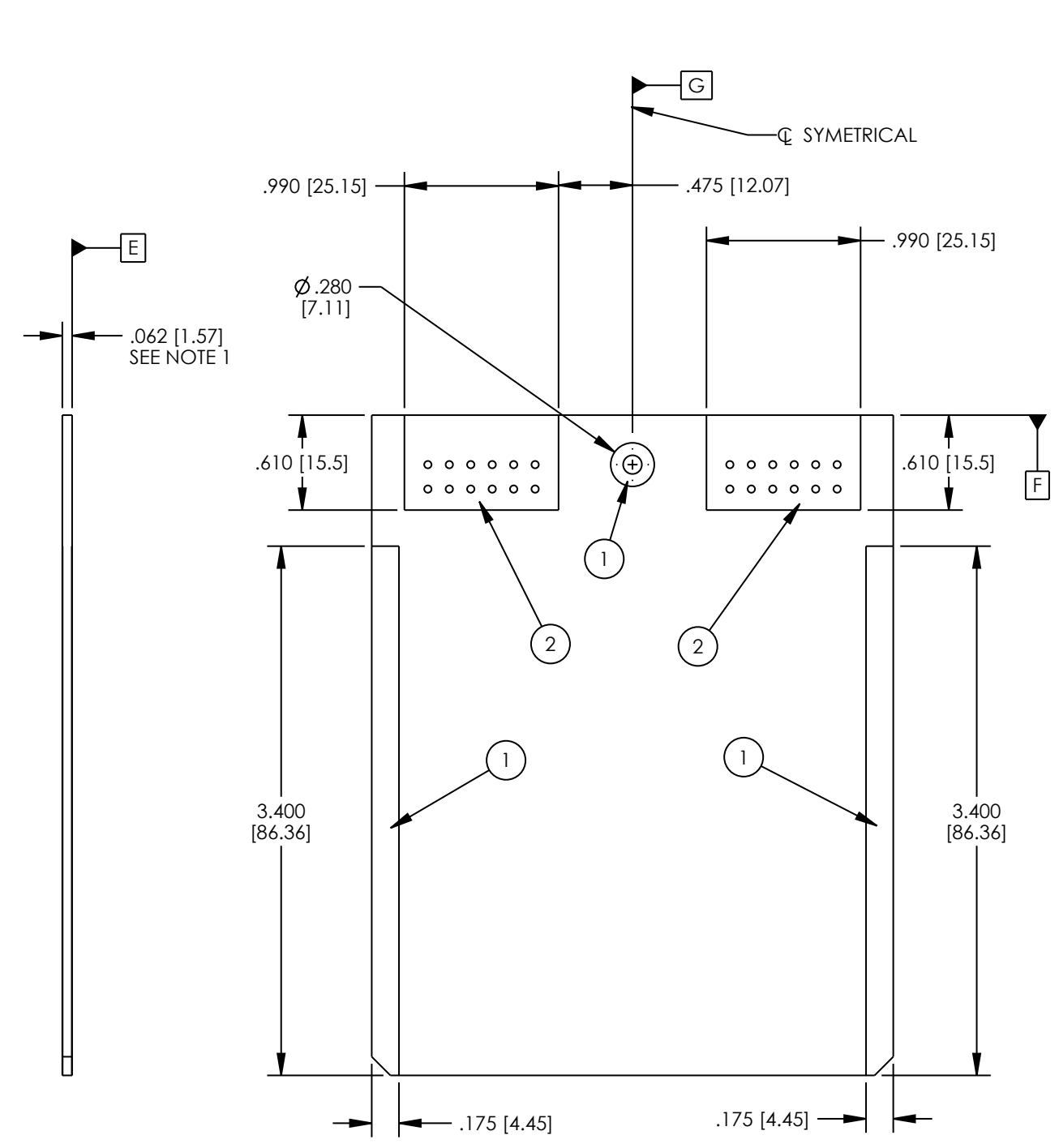
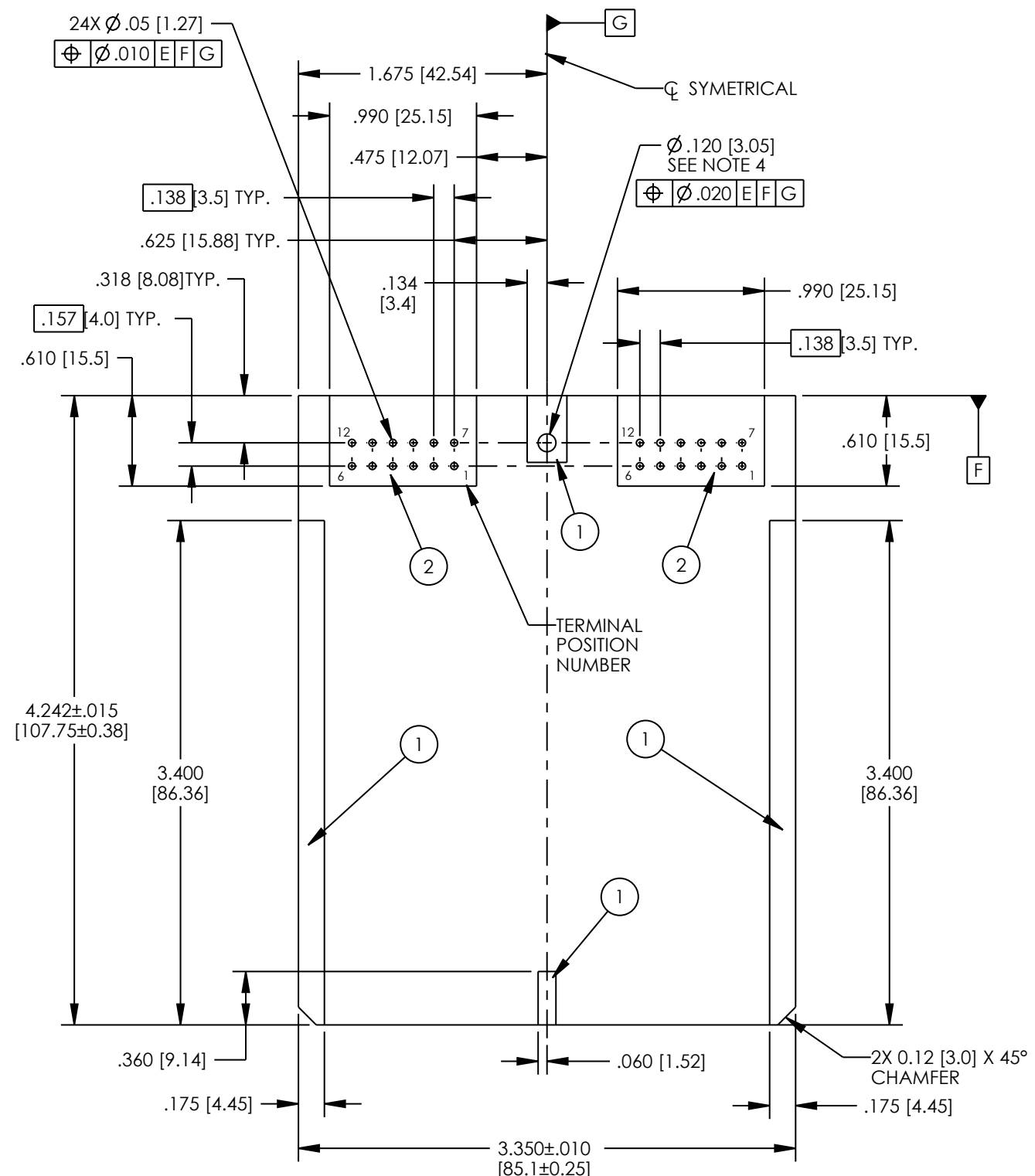


- NOTES:
1. DIMENSIONS ARE IN INCHES EXCEPT DIMENSIONS INSIDE [XX] ARE IN mm. ALL DIMENSIONS ARE FOR REFERENCE ONLY.
  2. MATERIALS:  
HEADER INSULATOR: 30% GLASS FILLED POLYMER, COLOR BLACK.  
TERMINAL BLADES: 1.5mm BRASS WITH TIN OVER NICKEL PLATING.
  3. HEADERS ARE REFLOW OR WAVE SOLDERING PROCESS ROHS COMPLIANT.
  4. SEE SHEET 2 FOR PCB DETAILS.
  5. RIGHT SIDE MATES WITH MOLEX FEMALE CONNECTOR PART NUMBER 33472-1201 (COLOR BLACK).
  6. LEFT SIDE MATES WITH MOLEX FEMALE CONNECTOR PART NUMBER 33472-1202 (COLOR GRAY).

|  |  |                                  |                              |   |
|--|--|----------------------------------|------------------------------|---|
| UNITS: ENGLISH INCHES  |  | PRO/E                            | MODELED BY:<br>K. ROSBOROUGH |   |
| DO NOT SCALE DRAWING   |  | DESIGN ENGINEER<br>K. ROSBOROUGH | DATE<br>07/11/14             | TITLE<br>MODICE ME-MX<br>24 POSITION ASSEMBLY |
| UNLESS OTHERWISE SPECIFIED:<br>ALL DIMENSIONS ARE IN INCHES  |  | MATERIAL<br>NOTED                |                              | CONTROL SPEC NUMBER                           |
| FILLET/RADII<br>.02 MAX.   | TOLERANCES<br>.X ± .1<br>.XX ± .01<br>.XXX ± .005<br>ANGULAR ± .5° | MATERIAL SPEC NUMBER             |                              | FINISH  |
| CONFIDENTIAL<br>THIS DOCUMENT IS THE PROPERTY OF CINCH.<br>NEITHER THIS DOCUMENT NOR ANY OF<br>THE INFORMATION CONTAINED IN IT MAY<br>BE DUPLICATED OR DISCLOSED WITHOUT<br>PRIOR WRITTEN CONSENT OF CINCH.<br>©COPYRIGHT 2012 CINCH |  | APPROVALS<br>ON FILE             |                              | PROJECT NUMBER<br>A15123                      |
| CAD FILE NUMBER<br>5810124011S   | DRAWING NUMBER<br>581 01 24 011 S                                  |                                  | SCALE<br>1:1                 |   |
| CAGE IDENT NO.<br>71785  | SIZE<br>B  | SHEET 1 OF 2                     |                              |   |

# PCB TOP SIDE

# PCB BOTTOM SIDE



**PCB NOTES:**

1. SUGGESTED PCB THICKNESS .062 [1.57].
2. AREAS INDICATED BY (1) ARE COMPONENT AND TRACE KEEP OUT AREAS.
3. AREAS INDICATED BY (2) ARE COMPONENT KEEP OUT AREAS.
4. SUGGESTED SCREW TO SECURE PCB TO HEADER: #4 THREAD CUTTING SCREW (TYPE 23 OR SIMILAR) TORQUED TO 2-3 IN-LBS [0.23-0.34 N-m].

|  |  |  |  |                                      |  |
|--|--|--|--|--------------------------------------|--|
| UNITS: ENGLISH INCHES  |  | <b>CINCH</b>   |  | 1700 FINLEY RD<br>LOMBARD, IL. 60148 |  |
| DO NOT SCALE DRAWING   |  | TITLE: MODICE ME-MX<br>24 POSITION ASSEMBLY                        |  |                                      |  |
| UNLESS OTHERWISE SPECIFIED:<br>ALL DIMENSIONS ARE IN INCHES  |  | PRO/E DRAWING  |  |                                      |  |
| Fillet/Radii<br>.02 MAX.   |  | TOLERANCES<br>.X ± .1<br>.XX ± .01<br>.XXX ± .005<br>ANGULAR ± .5° |  | CAD FILE NUMBER: 5810124011S         |  |
| CONFIDENTIAL<br>THIS DOCUMENT IS THE PROPERTY OF CINCH.<br>NEITHER THIS DOCUMENT NOR ANY OF<br>THE INFORMATION CONTAINED IN IT MAY<br>BE DUPLICATED OR DISCLOSED WITHOUT<br>PRIOR WRITTEN CONSENT OF CINCH.<br>©COPYRIGHT 2012 CINCH |  | DRAWING NUMBER: 581 01 24 011S                                     |  | REV: A                               |  |
| CAGE IDENT NO.: 71785  |  | SCALE: 1:1   |  | SHEET 2 OF 2                         |  |