

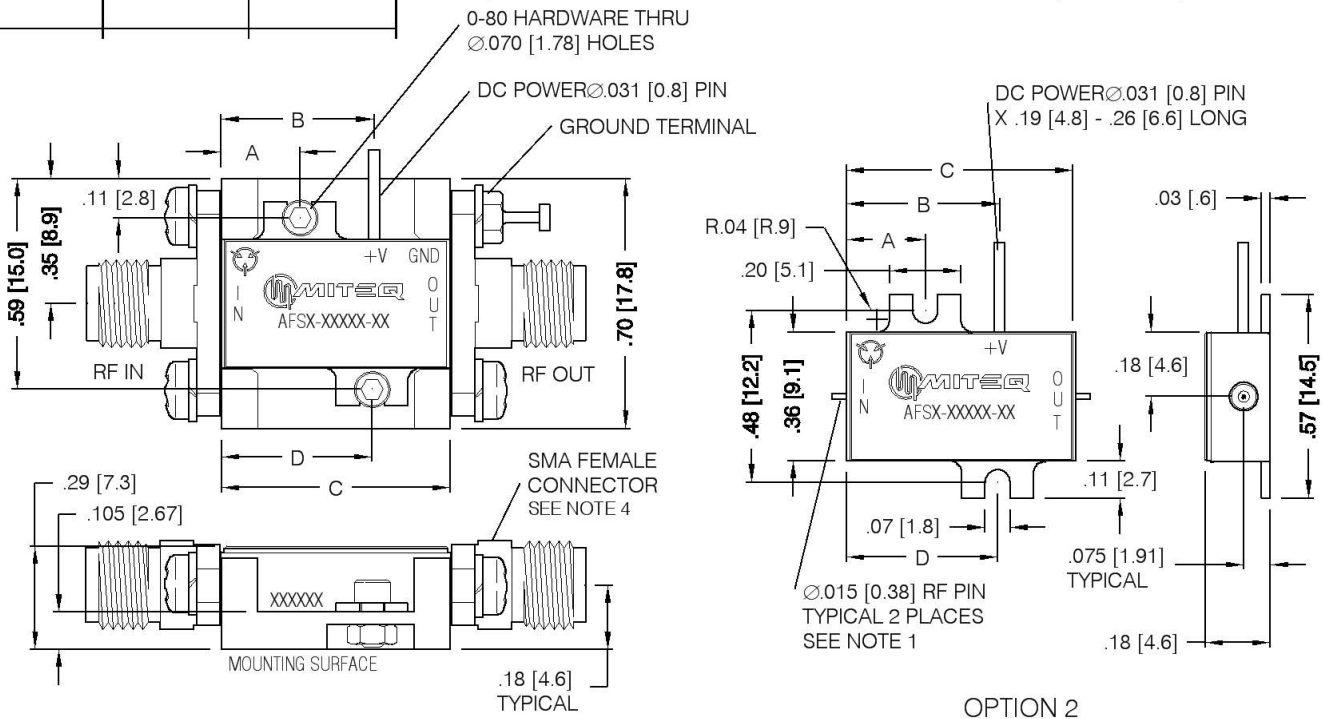
Current Revision

As of 12/27/2011 1:27:16 PM

DWALATA



| DASH NO. | APPLICATION | | REVISIONS | | | |
|----------|-------------|---------|-----------|-----------------------|----------|------------------|
| | NEXT ASSY | USED ON | LTR | DESCRIPTION | DATE | APPROVED |
| | | | N | Incorporate ECN 20596 | 09/14/11 | <i>R.Scherer</i> |



OPTION 1
AMPLIFIER MAY BE READILY USED AS IS, BY REMOVING EXISTING 0-80 HARDWARE AND SUBSTITUTING WITH LONGER 0-80 SCREWS FOR CUSTOMER MOUNTING

OPTION 2
"DROP-IN" AMPLIFIER BY REMOVING "SMA" CONNECTORS AND MOUNTING HARDWARE AS SHOWN

NOTES

1. RF PIN LENGTH FROM BODY TO BE 0.080 [2.03] NOMINAL, 0.050 [1.27] MIN, 0.100 [2.54] MAX
2. DIMENSIONS SHOWN IN BRACKETS ARE IN MILLIMETERS
3. MARKING MAY VARY
4. STANDARD CONNECTOR CONFIGURATION SHOWN, FOR ALTERNATE GENDER OPTION ADD SUFFIX FM, MF, OR MM AT THE END OF DASH NUMBER
EXAMPLE: 113384-4MF (AFS DASH 4 WITH MALE INPUT AND FEMALE OUTPUT)

| DASH | DIM A | DIM B | DIM C | DIM D |
|------|-----------|------------|-------------|------------|
| 2 | .16 [4.1] | .28 [7.1] | .43 [10.9] | .27 [6.9] |
| 3 | .16 [4.1] | .32 [8.1] | .53 [13.5] | .38 [9.7] |
| 4 | .22 [5.6] | .43 [10.9] | .64 [16.3] | .42 [10.7] |
| 5 | .22 [5.6] | .53 [13.5] | .75 [19.1] | .53 [13.5] |
| 6 | .22 [5.6] | .64 [16.3] | .86 [21.8] | .64 [16.3] |
| 7 | .22 [5.6] | .75 [19.1] | .97 [24.6] | .75 [19.1] |
| 8 | .22 [5.6] | .86 [21.8] | 1.07 [27.2] | .86 [21.8] |

| | | | | | |
|--|-------------------------------|----------|---|-----------------|--------------|
| UNLESS OTHERWISE SPECIFIED DIMENSIONS ARE IN INCHES TOLERANCES ON DECIMAL .X ±0.1 [2.5] DECIMAL .XX ±0.01 [0.25] DECIMAL .XXX ±0.005 [0.13] ANGLES X° ±30' | NAME | DATE | 100 Davids Drive, Hauppauge, New York 11788 | | |
| | DWN <i>D. Schmitz</i> | 07/19/88 | | | |
| | DFT DGN <i>R.Scherer</i> | 12/12/11 | AFS SERIES AMPLIFIER OUTLINE | | |
| | PROJ ENGR <i>J. Buonaiuto</i> | 12/12/11 | | | |
| ESD SENSITIVE COMPONENT | MFG ENGR | | SIZE | CODE IDENT. NO. | REV |
| | Q.C. | | A | 33592 | N |
| | CUST | | SCALE 2:1 | PROJECT | SHEET 1 OF 1 |