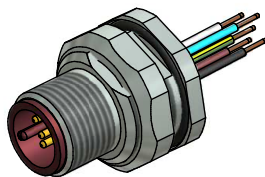


A

Contact assignment:

- 1 ■ brown
- 2 ■ white
- 3 ■ blue
- 4 ■ black
- 5 ■ green-yellow



Technical specification:

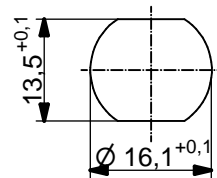
Rated voltage: IEC 61076-2-101	4pos 5pos 250 V 60 V
Current rating: IEC 61076-2-101	4 A at 40°C
Insulation resistance: IEC 60512	>=100 MΩ
Pollution degree: IEC 60664-1	3/2
Degree of protection: IEC 60529	IP 67, in mated condition
Temperature range: IEC 60664-1	+100°C - 30.000h +125°C - 8.000h +150°C - 2.000h
Mating cycles: IEC 60512-9a	>=100

Materials:

Contact:	CuZn
Contact plating:	Nickel, gold plated
Contact carrier:	PBT GF, UL 94
Sealing:	FPM
Counternut:	CuZn, nickel plated
Socket housing:	CuZn, nickel plated
Grouting:	Polyurethane-resin, UL 94

Installation specification:

recommended torque:	1-1,2 Nm
Conec installation tool:	Torque wrench: 36-000200 Insert across flats 19: 36-000250



Minimum wall thickness 1,5mm,
alternativ panel cut-out d=16,1

Part no:	Description:	Pos	Length L:	Wire:
43-01131	SAL - HT - 12 - FSH4 - 0,5	4	0,5m	Copolymer, UL AWG 24
43-xxxxx	SAL - HT - 12 - FSH... - ...	4	x	
43-01132	SAL - HT - 12 - FSH5 - 0,5	5	0,5m	
43-xxxxx	SAL - HT - 12 - FSH5 - ...	5	x	

DO NOT ALTER CAD DRAWING BY HAND

Directive 2002/95/EC RoHS compliant

Index: b 30.08.10 fro Ä3696
specification of wires changed, datasheet revised

tolerance of cable: L ≤ 0,5m: L + 20mm
L > 0,5m: L + 4%

THIS DRAWING MAY NOT BE COPIED OR REPRODUCED IN ANY WAY, AND MAY NOT BE PASSED ON TO A THIRD PARTY WITHOUT WRITTEN PERMISSION.
OWNERSHIP AND COPYRIGHT OF CONEC GmbH

	dim. in mm	
	date	name
drawn	01.03.07	Fromm
appd.	01.03.07	Mankopf



title:
Male socket M12x1 with wire, backmounting, HT

dwg no:
43K1A278

part no: