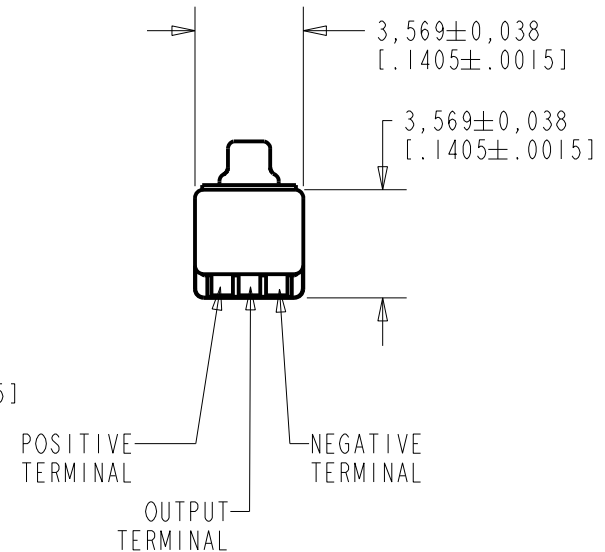
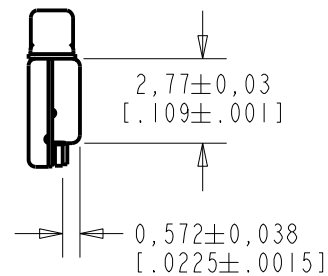
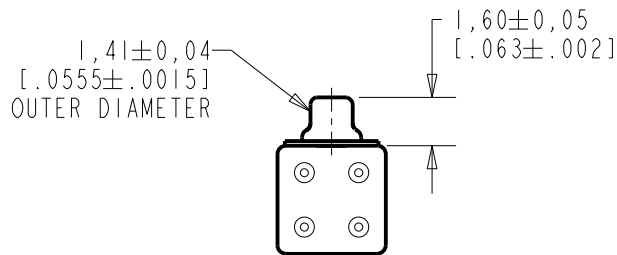
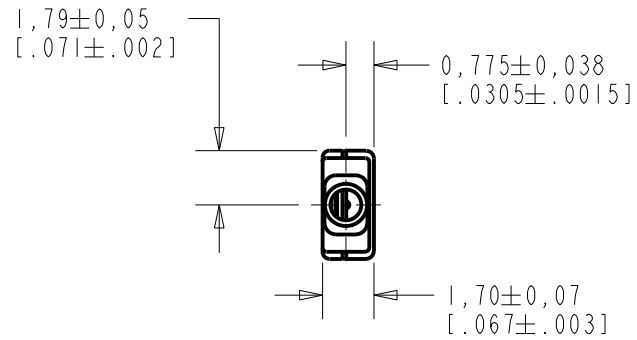


TM-24547-C36
SHT 1.1

NOTES:

- INCREASED PRESSURE AT SOUND INLET CAUSES A POSITIVE GOING VOLTAGE TO APPEAR AT THE OUTPUT TERMINAL, RELATIVE TO THE NEGATIVE TERMINAL.



NOMINAL WEIGHT
.08 GRAMS

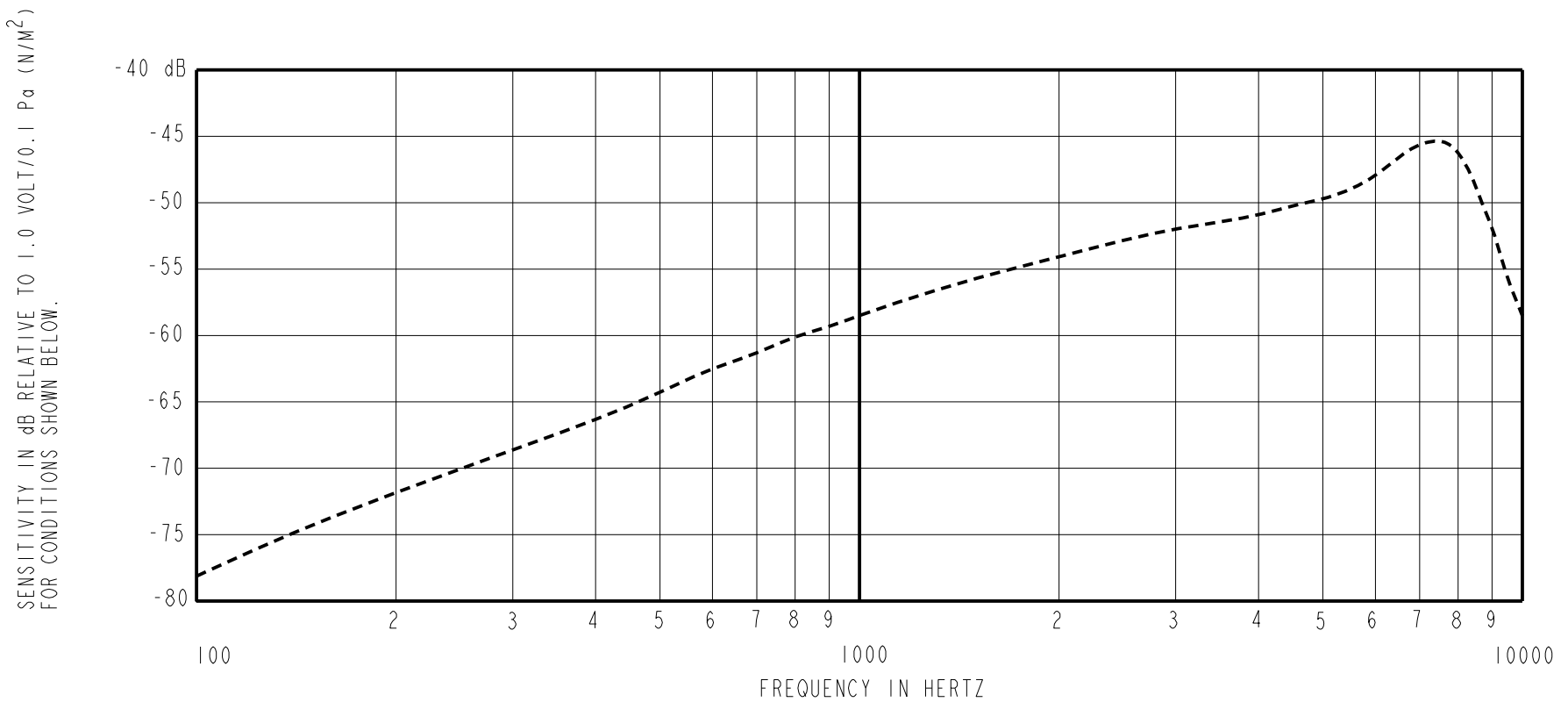
DIMENSIONS IN MILLIMETERS [INCHES]

Revision	C.O. #	Implementation Date	RELEASE LEVEL	REVISION
E	MI0104041	5-4-11	Active	E
D	MI0102914	6-5-09		

SCALE: 4:1		DR. BY: MMM	DATE: 1-6-06
DO NOT SCALE DRAWING			
TITLE: MICROPHONE		APP. BY: GJP	
		DATE: 1-9-06	
		DATE: 1-9-06	
		DATE: 1-9-06	
		DATE: 1-9-06	

KNOWLES ELECTRONICS
ITASCA, ILLINOIS U.S.A.

TITLE: **MICROPHONE** **TM-24547-C36**
OUTLINE DRAWING **SHT 1.1**



FREQUENCY	SENSITIVITY			DEVICE CONFORMITY	
	MIN.	NOM.	MAX.	RANGE OF DEVIATION FROM 1KHz	
300	---	-68.5	---	-11.5	-8.5
1000	-62.5	-58.5	-54.5	0.0	0.0
≈7300	---	-45.0	---	+8.0	+18.0

- NOTES:
1. CASE CONNECTED TO NEGATIVE TERMINAL.
 2. MICROPHONE TO BE FUNCTIONAL WITH 1.6 VDC SUPPLY.
 3. TYPICAL SENSITIVITY TO HUMIDITY AT 1000Hz IS 0.06 dB/%RH
 4. SENSITIVITY AND NOISE VALUES INDICATED ON THIS SPECIFICATION ARE VALID AT 50% HUMIDITY.

PORT LOCATION	DC SUPPLY	AMPLIFIER CURRENT DRAIN	SENSITIVITY CHANGE ON REDUCING SUPPLY TO 0.9VDC	"A" WEIGHTED NOISE (RE 1.0 VOLT)	OUTPUT IMPEDANCE OHMS		
					MIN.	NOM.	MAX.
12S	1.3V	50 □A MAX.	3 dB MAX.	-98.5 dB MAX.	2800	4400	6800

Revision	C.O. #	Implementation Date	RELEASE LEVEL	REVISION
E	M10104041	5-4-11	Active	E
D	M10102914	6-5-09		
WHEN TEST LIMITS ARE USED TO ESTABLISH INCOMING INSPECTION ACCEPTANCE/REJECTION CRITERIA, CORRELATION OF TEST EQUIPMENT WITH KNOWLES IS ALSO REQUIRED FOR ELIMINATION OF EQUIPMENT AND TEST METHOD VARIATION			DR. BY	DATE
TITLE: MICROPHONE PERFORMANCE SPECIFICATION			MMM	1-6-06
			TM-24547-C36 SHT 2.1	
			CK. BY	DATE
			GJP	1-9-06
			APP. BY	DATE
			GJP	1-9-06

KNOWLES ELECTRONICS
ITASCA, ILLINOIS U.S.A.