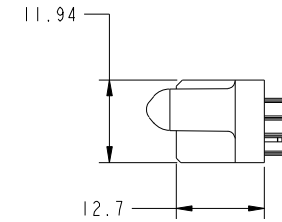
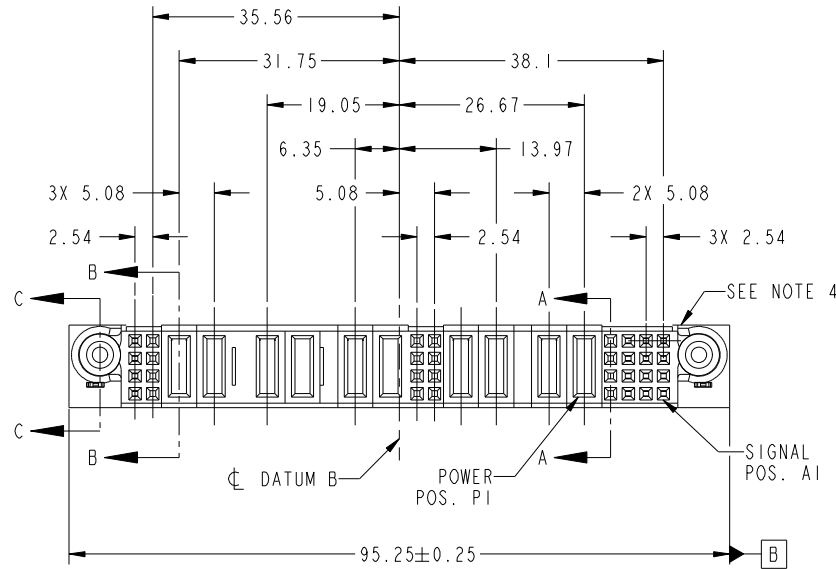


Tous droits strictement reserves. Reproduction ou communication a des tiers interdite sous quelque forme que ce soit sans autorisation écrite du propriétaire. Propriete de c FCI. Droits de reproduction FCI.



All rights strictly reserved. Reproduction or issue to third parties in any form whatever is not permitted without written authority from the proprietor. Property of FCI. Copyright FCI.

PRODUCT NO.	ROWS	1   2																3								4																	
		E2	8	7	P10	P9	P8	P7	P6	P5	6	5	P4	P3	P2	P1	4	3	2	1	E1	SIG								POWER								SIG					
51940-301-- NOTE: 3	D C B A	E X X		E X X		P A		X		P D		X		P D		X		X X X		X X X		P D		X		P A		X		X E E E E		X E E E E		X E E E E		X E E E E							



CODE	DIM "M" MATING LENGTH	CONTACT TYPE
E	[N/A]	SIGNAL
PA	[1.07]	POWER
PD	[2.34]	POWER
HA	[N/A]	HOLD-DOWN
X	OMITTED	OMITTED

mat'l code 0				tolerances unless otherwise specified				CUSTOMER		FCI	
ltr	ecn no.	dr	date	linear	0.X ±0.3		COPY		www.fciconnect.com		
A	DG09-0188	JW	06/04/09	angles	0.XX ±0.13		projection		title 16S + 4P + 8S + 6P + 8S		
					0.XXX ±0.051		MIM		VERTICAL SOLDER RECEPTACLE		
				dr	0° ±2°		scale		product family PwrBlade code 213		
				enr	JULIA WANG 06/04/09		1:1		size dwg no 51940-301 sheet 1 of 4		
				chr	JEROME CHEN 06/11/09						
				appd	GARY HSIEH 06/04/09						
					JOSEPH HSIA 06/04/09						
sheet index	revision sheet	A 1	A 2	A 3	A 4					cage code 22526	

Pro/E

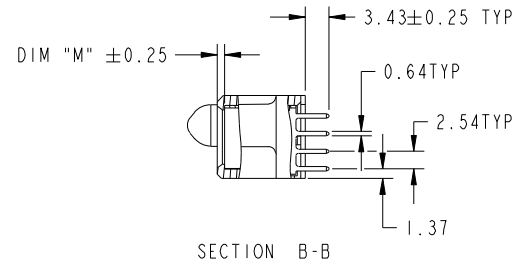
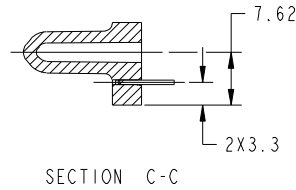
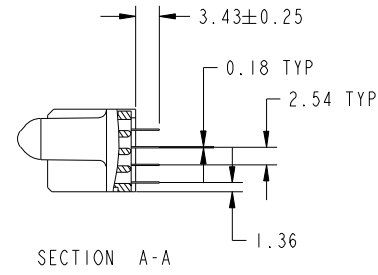
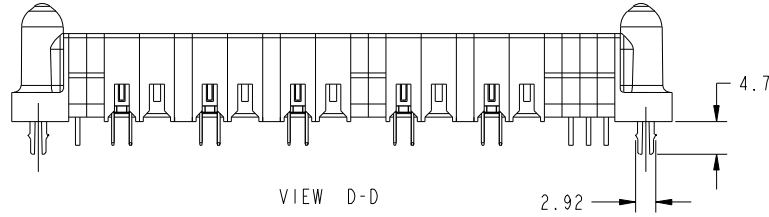
cage code 22526

Tous droits strictement reserves. Reproduction ou communication a des tiers interdite sous quelque forme que ce soit sans autorisation écrite du propriétaire. Propriete de c FCI. Droits de reproduction FCI.



All rights strictly reserved. Reproduction or issue to third parties in any form whatever is not permitted without written authority from the proprietor. Property of FCI. Copyright FCI.

PRODUCT NUMBER  
51940-301\_\_  
NOTE: 3



mat'l code				0	tolerances unless otherwise specified		CUSTOMER		
ltr	ecn no.	dr	date	linear	0.X ±0.3		COPY	www.fciconnect.com	
A					0.XX ±0.13		projection	title 16S + 4P + 8S + 6P + 8S VERTICAL SOLDER RECEPTACLE	
					0.XXX ±0.051			product family PwrBlade code 213	
				angles	0° ±2°		MIM 	size	sheet
				dr	JULIA WANG	06/04/09		A	2 of 4
				enr	JEROME CHEN	06/11/09		scale	
				chr	GARY HSIEH	06/04/09		1:1	
				appd	JOSEPH HSIA	06/04/09			
sheet index	revision sheet								

cage code 22526

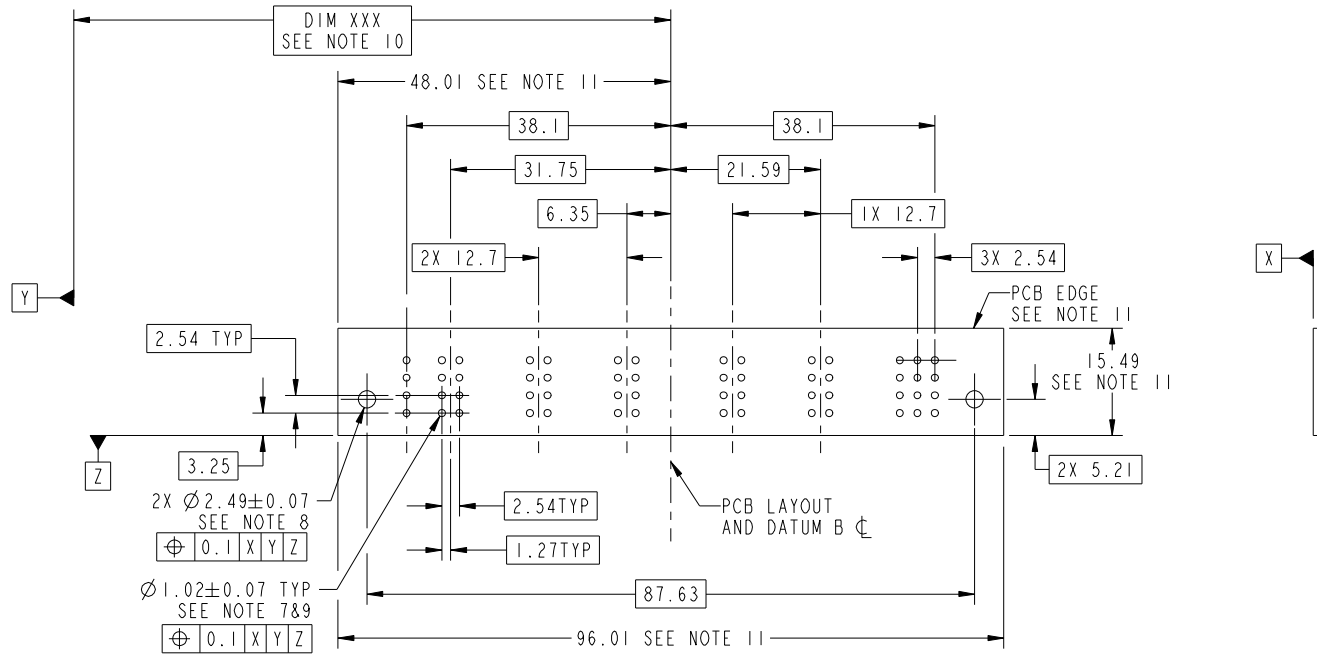
Pro/E

Tous droits strictement reserves. Reproduction ou communication a des tiers interdite sous quelque forme que ce soit sans autorisation écrite du propriétaire. Propriete de c FCI. Droits de reproduction FCI.



All rights strictly reserved. Reproduction or issue to third parties in any form whatever is not permitted without written authority from the proprietor. Property of FCI. Copyright FCI.

PRODUCT NUMBER  
51940-301\_\_  
NOTE: 3



RECOMMENDED PCB LAYOUT

mat'l code				0	tolerances unless otherwise specified		CUSTOMER		 www.fciconnect.com	
ltr	ecn no.	dr	date	linear	0.X ± 0.3		COPY		 title 16S + 4P + 8S + 6P + 8S VERTICAL SOLDER RECEPTACLE	product family PwrBlade code 213 size dwg no 51940-301 sheet 3 of 4
A					0.XX ± 0.13		 scale 1:1			
					angles	0.XXX ± 0.051				
				dr	JULIA WANG	06/04/09				
				enr	JEROME CHEN	06/11/09				
				chr	GARY HSIEH	06/04/09				
				appd	JOSEPH HSIA	06/04/09				
sheet index	revision sheet									

Pro/E

cage code 22526

Tous droits strictement reserves. Reproduction ou communication a des tiers interdite sous quelque forme que ce soit sans autorisation écrite du propriétaire. Propriete de c FCI. Droits de reproduction FCI.



All rights strictly reserved. Reproduction or issue to third parties in any form whatever is not permitted without written authority from the proprietor. Property of FCI. Copyright FCI.

PRODUCT NUMBER  
51940-301\_\_  
NOTE: 3

NOTES:

1. DIMENSIONS AND TOLERANCES ARE IN ACCORDANCE WITH ASME Y14.5M, 1994 UNLESS OTHERWISE SPECIFIED.

CONNECTOR NOTES:

- 2. HOUSING MATERIAL: UL 94 V-0 GLASS FILLED  
HIGH-TEMP THERMOPLASTIC  
POWER CONTACT MATERIAL: COPPER ALLOY  
SIGNAL PIN MATERIAL: COPPER ALLOY
- 3. PLATING:  
SEE ITEM 5 & 6 IN PRINT 10064183 FOR PLATING SPEC. OF 51940-301; 51940-301LF RESPECTIVELY.
- 4. MANUFACTURER'S NAME, P/N, AND DATE CODE TO APPEAR ON THIS SURFACE.
- 5. PRODUCT SPECIFICATION GS-12-149.  
APPLICATION SPECIFICATION BUS-20-067.
- 6. PACKAGED IN TRAYS.

PCB NOTES:

- 7. ALL HOLE DIAMETERS ARE FINISHED HOLE SIZE.
- 8. MOUNTING HOLES, WHERE APPLICABLE, ARE UNPLATED.
- 9.  $\varnothing 1.151 \pm 0.025$  DRILLED HOLES PLATED WITH  
0.008 MIN SnPb OR Sn OVER 0.03  
TO 0.08 Cu PLATING TO ACHIEVE  
 $\varnothing 1.02 \pm .07$  HOLE.
- 10. "DIM XXX" TO BE DETERMINED BY THE CUSTOMER.
- 11. CONNECTOR KEEP-OUT ZONE.

mat'l code		0		tolerances unless otherwise specified		CUSTOMER		FCI		www.fciconnect.com	
ltr	ecr no.	dr	date	linear	0.X ± 0.3	COPY		projection	title 16S + 4P + 8S + 6P + 8S VERTICAL SOLDER RECEPTACLE		
A					0.XX ± 0.13	MIM					
				angles	0.XXX ± 0.051	scale					
					0° ± 2°	1:1		product family PwrBlade		code	213
				dr	JULIA WANG 06/04/09	size		dwg no		sheet	
				enr	JEROME CHEN 06/11/09	A		51940-301		4 of 4	
				chr	GARY HSIEH 06/04/09						
				appd	JOSEPH HSIA 06/04/09						
sheet index	revision sheet										

cage code 22526

Pro/E