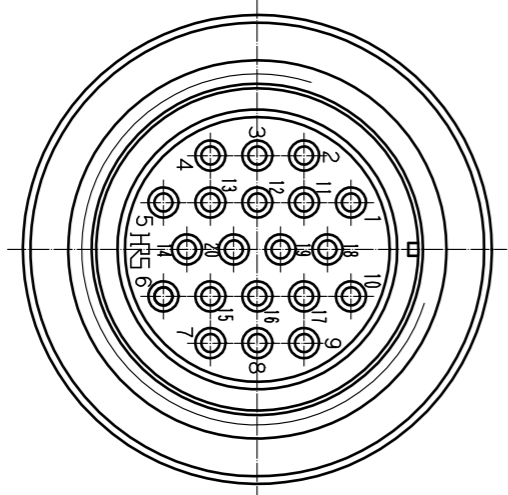
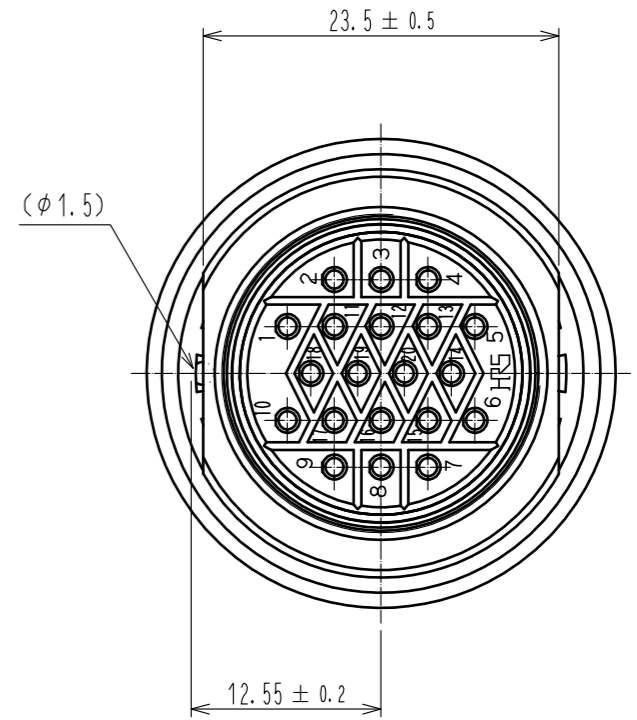
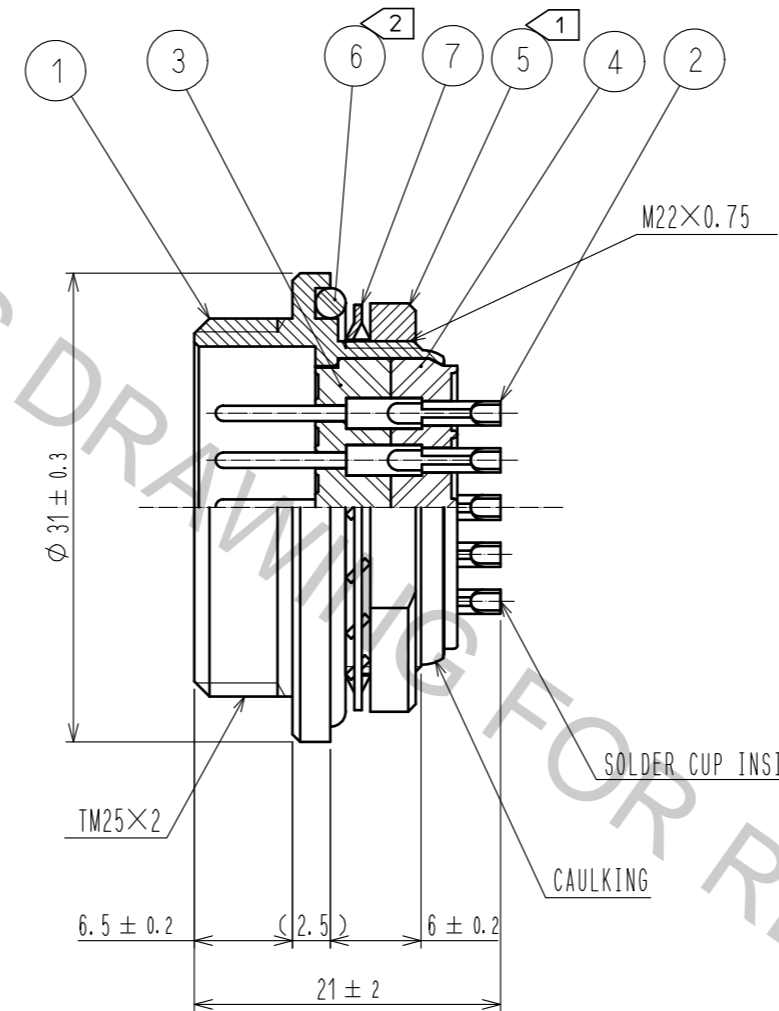
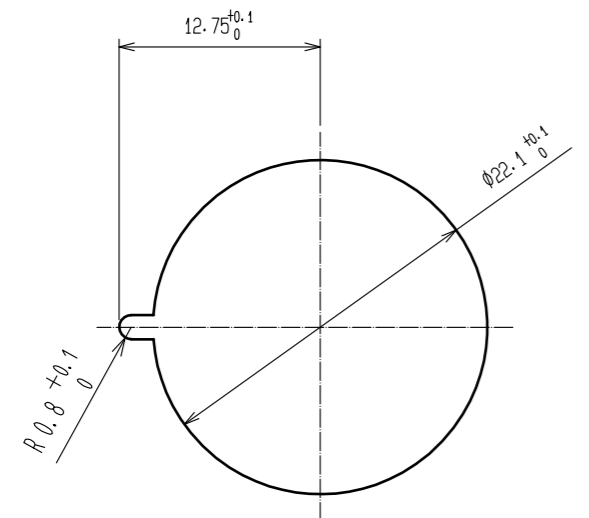


Aug.1.2018 Copyright 2018 HIROSE ELECTRIC CO., LTD. All Rights Reserved.
 In case that the application demands a high level of reliability, such as automotive,
 please contact a company representative for further information.



PANEL CUTOUT
 (PANEL THICKNESS 2 MAX.)



- NOTES
- ① THE RECOMMENDED TIGHTENING TORQUE OF REF.NO. ⑤ SHALL BE 4N · m. LOCTITE 243, HENKEL JAPAN OR EQUIVALENT IS RECOMMENDED TO PREVENT REF. NO. ⑤ FROM LOOSENING.
 - ② WHEN MOUNTED ON CHASSIS, BE CAREFUL THAT REFERENCE NO. ⑥ IS FITTED INTO THE INDICATES GROOVE ANY BITING.

4	DIALLYL PHTHALATE	(BLACK) UL94V-0			
3	DIALLYL PHTHALATE	(BLACK) UL94V-0	7	PHOSPHOR BRONZE	NICKEL PLATING
2	BRASS	SILVER PLATING 4 μm min.	6	CHLOROPRENE RUBBER	(BLACK)
1	BRASS	NICKEL PLATING	5	BRASS	NICKEL PLATING
NO.	MATERIAL	FINISH . REMARKS	NO.	MATERIAL	FINISH . REMARKS

UNITS mm		SCALE 2 : 1	COUNT 	DESCRIPTION OF REVISIONS	DESIGNED	CHECKED	DATE
HRS HIROSE ELECTRIC CO., LTD.		APPROVED : HY. KOBAYASHI	18.02.22	DRAWING NO.	EDC-003646-31-00		
		CHECKED : HY. KOBAYASHI	18.02.22	PART NO.	RM21WTR-20P(31)		
		DESIGNED : HY. KISHI	18.02.22	CODE NO.	CL109-1446-0-31		
		DRAWN : MK. INOUE	18.02.08				