

CODE	DIM "M" MATING LENGTH	CONTACT TYPE
PX	[N/A]	POWER
HA	[N/A]	HOLD-DOWN

spec ref	See Notes			dr	Hong-Tu, Zhang	2011/08/09	projection 	MM ←→	size	A4	scale	1:1
tolerance std	TOLERANCES UNLESS OTHERWISE SPECIFIED			eng	Guang, Shi	2011/09/21			ecn no	-		
See Notes				chr	-	-			rel level	Released		
surface	linear	0.X	±0.50	FCI	title	4ACP	product family	PwrBlade	dwg no	51812-003	rev	A
		0.XX	±0.25									
		0.XXX	±0.10									
	angular	0°	±2°	www.fci.com	cat. no.	-	Product - Customer Drw		sheet 1 of 4			

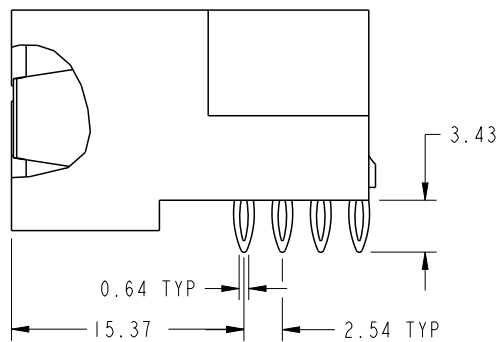
PrdrE File - REV C - 2009-06-09



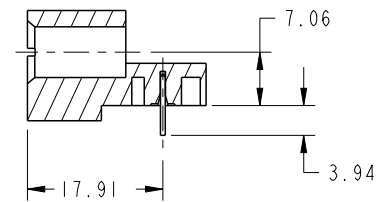
Copyright FCI.

PRODUCT NUMBER

51812-003:--



BROKEN-OUT SECTION B-B  
SCALE 2:1

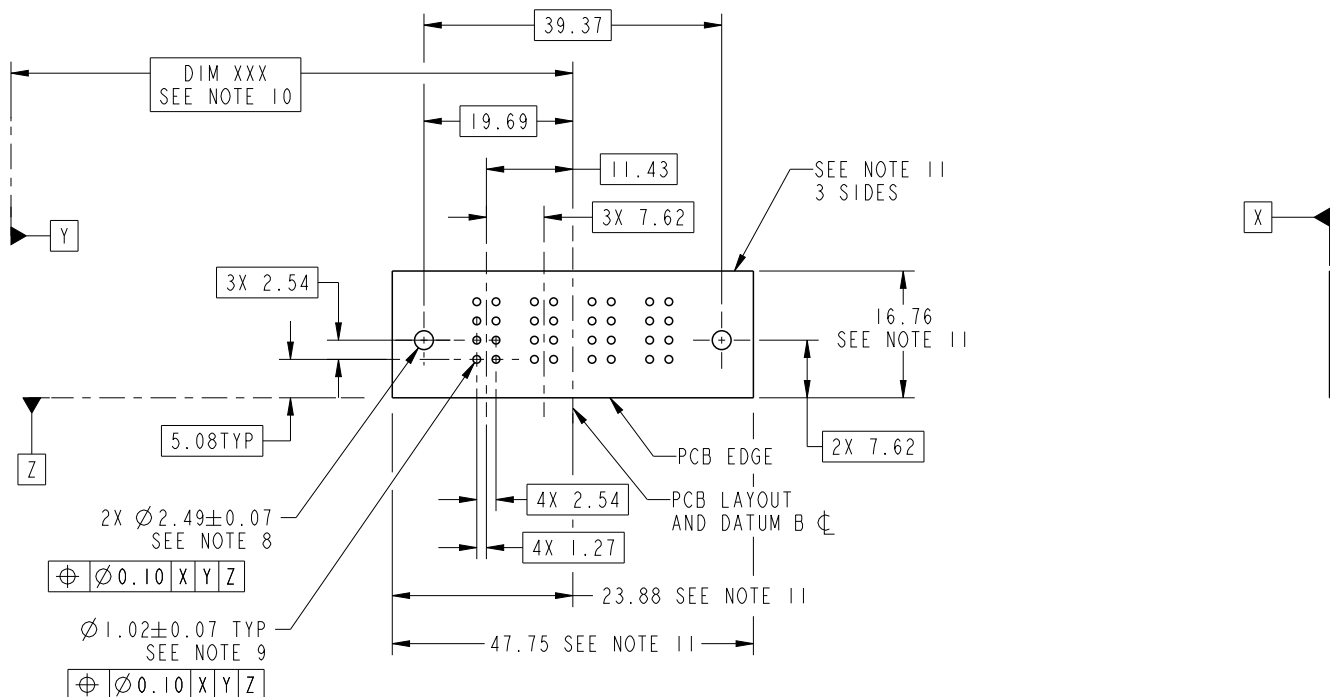


SECTION C-C

dr	Hong-Tu, Zhang	2011/08/09	projection 	MM ←————→	size	A4	scale	1:1			
eng	Guang, Shi	2011/09/21			ecm no	-					
chr	-	-			product family	PwrBlade	rel level	Released			
appr	Pei-Ming Zheng	2011/09/21			title	4ACP		dwg no	51812-003	rev	A
www.fci.com					cat. no.	-	Product - Customer Drw			sheet 2 of 4	

PRODUCT NUMBER

51812-003:--



RECOMMENDED PCB LAYOUT

dr	Hong-Tu, Zhang	2011/08/09	projection 	MM 	size	A4	scale	1:1	
eng	Guang, Shi	2011/09/21			ecn no	-			
chr	-	-			rel level	Released			
appr	Pei-Ming Zheng	2011/09/21	product family	PwrBlade					
		title	4ACP RIGHT ANGLE PF HEADER		dwg no	51812-003		rev	A
www.fci.com		cat. no.	-		Product - Customer Drw			sheet 3 of 4	

PRODUCT NUMBER

51812-003:--

NOTES:

1. DIMENSIONS AND TOLERANCES ARE IN ACCORDANCE WITH ASME Y14.5M, 1994 UNLESS OTHERWISE SPECIFIED.

CONNECTOR NOTES:

- 2. HOUSING MATERIAL: UL 94 V-0 GLASS FILLED HIGH-TEMP THERMOPLASTIC  
POWER CONTACT MATERIAL: COPPER ALLOY  
SIGNAL PIN MATERIAL: COPPER ALLOY
- 3. SEE ITEM 3 & 4 IN PRINT 10064183 FOR PLATING SPEC OF 51812-003 AND 51812-003LF RESPECTIVELY.
- 4. MANUFACTURER'S NAME, DATE CODE AND OPTIONAL P/N TO APPEAR ON THIS SURFACE. THE P/N CAN BE OMITTED IF THERE IS NOT ENOUGH SPACE ON THIS SURFACE.
- 5. PRODUCT SPECIFICATION GS-12-149.  
APPLICATION SPECIFICATION BUS-20-067.

6. PACKAGED IN TRAYS.

PCB NOTES:

- 7. ALL HOLE DIAMETERS ARE FINISHED HOLE SIZE.
- 8. MOUNTING HOLES, WHERE APPLICABLE, ARE UNPLATED.
- 9.  $\varnothing 1.151 \pm 0.025$  DRILLED HOLES PLATED WITH  
0.008 MIN SnPb OR Sn OVER 0.03  
TO 0.08 Cu PLATING TO ACHIEVE  
 $\varnothing 1.02 \pm 0.07$  HOLE.
- 10. "DIM XXX" TO BE DETERMINED BY THE CUSTOMER.
- 11. CONNECTOR KEEP-OUT ZONE.
- 12. FOR PRESS-FIT CONNECTORS USE FCI CAM TOOL 430140-XXX TO APPLY CONNECTOR TO PCB.

dr	Hong-Tu, Zhang	2011/08/09	projection 	MM 	size	A4	scale	1:1	
eng	Guang, Shi	2011/09/21			ecn no	-			
chr	-	-							
appr	Pei-Ming Zheng	2011/09/21	product family	PwrBlade	rel level	Released			
	title	4ACP RIGHT ANGLE PF HEADER			dwg no	51812-003		rev	A
www.fci.com	cat. no.	-	Product - Customer Drw			sheet 4 of 4			