

PART NO.	HRS NO.	CONTACTS	A	B	C	D	E
DF14A-2P-1.25H(56)	CL538-0033-3-56	2	7.45	1.25	2.95	3.65	8.05
DF14A-3P-1.25H(56)	CL538-0034-6-56	3	8.70	2.50	4.20	4.90	9.30
DF14A-4P-1.25H(56)	CL538-0035-9-56	4	9.95	3.75	5.45	6.15	10.55
DF14A-5P-1.25H(56)	CL538-0036-1-56	5	11.20	5.00	6.70	7.40	11.80
DF14A-6P-1.25H(56)	CL538-0037-4-56	6	12.45	6.25	7.95	8.65	13.05
DF14A-7P-1.25H(56)	CL538-0038-7-56	7	13.70	7.50	9.20	9.90	14.30
DF14A-8P-1.25H(56)	CL538-0039-0-56	8	14.95	8.75	10.45	11.15	15.55
DF14A-9P-1.25H(56)	CL538-0040-9-56	9	16.20	10.00	11.70	12.40	16.80
DF14A-10P-1.25H(56)	CL538-0041-1-56	10	17.45	11.25	12.95	13.65	18.05
DF14A-15P-1.25H(56)	CL538-0114-3-56	15	23.70	17.50	19.20	19.90	24.30
DF14A-20P-1.25H(56)	CL538-0119-7-56	20	29.95	23.75	25.45	26.15	30.55
DF14A-25P-1.25H(56)	CL538-0124-7-56	25	36.20	30.00	31.70	32.40	36.80
DF14A-30P-1.25H(56)	CL538-0045-2-56	30	42.45	36.25	37.95	38.65	43.05

NOTE 1. LEAD CO-PLANALITY INCLUDE REINFORCED METAL FITTINGS SHALL BE 0.1 MAX.
 2. WHEN THIS CONNECTOR MATES WITH DF14-*S-1.25C, THE MATTING LENGTH IS 7.3mm.
 3. FOR CONNECTORS, 2 OR 3 CONTACTS, SIMPLIFIED LOCK HOLE SHALL BE SET AT THE CENTER OF HOUSING.

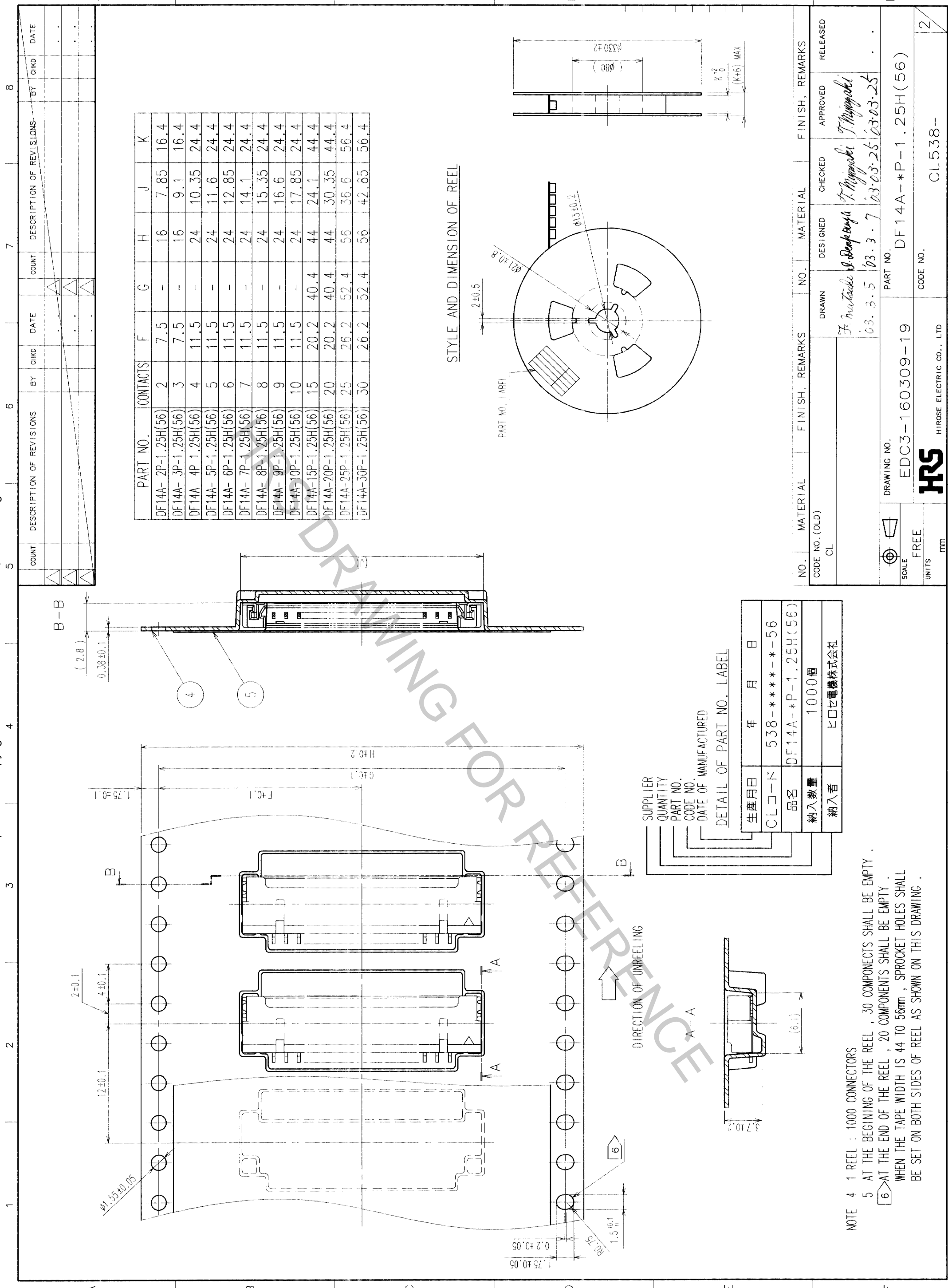
NO.	MATERIAL	FINISH, REMARKS	NO.	MATERIAL	FINISH, REMARKS
2	BRASS	CONTACT AREA: GOLD PLATED 0.1µm min LEAD AREA: TIN-COPPER PLATED 1µm min	5	POLYESTER	CLEAR(COVER TAPE)
1	POLYAMIDE	UNDER PLATING: NICKEL PLATED 1µm min BEIGE, UL94V-0	4	A-PET	CLEAR (EMBOSSED CARRIER TAPE)
			3	PHOSPHOR BRONZE	TIN-COPPER PLATED 1µm min UNDER PLATING: NICKEL PLATED 0.5µm min

CODE NO. (OLD)	CL	DRAWN	DESIGNED	CHECKED	APPROVED	RELEASED
		F. Mitsuoka	I. Doronaga	T. Miyazaki	T. Miyazaki	
		03.3.5	03.3.17	03.03.25	03.03.25	

DRAWING NO.	PART NO.
EDC3-160309-19	DF14A-*P-1.25H(56)

SCALE	UNITS	CODE NO.
5 : 1	mm	CL538-

TO



PART NO.	CONTACTS	F	G	H	J	K
DF14A-2P-1.25H(56)	2	7.5	-	16	7.85	16.4
DF14A-3P-1.25H(56)	3	7.5	-	16	9.1	16.4
DF14A-4P-1.25H(56)	4	11.5	-	24	10.35	24.4
DF14A-5P-1.25H(56)	5	11.5	-	24	11.6	24.4
DF14A-6P-1.25H(56)	6	11.5	-	24	12.85	24.4
DF14A-7P-1.25H(56)	7	11.5	-	24	14.1	24.4
DF14A-8P-1.25H(56)	8	11.5	-	24	15.35	24.4
DF14A-9P-1.25H(56)	9	11.5	-	24	16.6	24.4
DF14A-10P-1.25H(56)	10	11.5	-	24	17.85	24.4
DF14A-15P-1.25H(56)	15	20.2	40.4	44	24.1	44.4
DF14A-20P-1.25H(56)	20	20.2	40.4	44	30.35	44.4
DF14A-25P-1.25H(56)	25	26.2	52.4	56	36.6	56.4
DF14A-30P-1.25H(56)	30	26.2	52.4	56	42.85	56.4

STYLE AND DIMENSION OF REEL

NO.	MATERIAL	FINISH, REMARKS	NO.	MATERIAL	FINISH, REMARKS
CL					

生産月日	年	月	日
538-***-**-56			

CLコード	品名	納入数量	納入者
DF14A-P-1.25H(56)	1000個	ヒロセ電機株式会社	

NOTE 4 1 REEL : 1000 CONNECTORS
 5 AT THE BEGINNING OF THE REEL, 30 COMPONENTS SHALL BE EMPTY.
 6 AT THE END OF THE REEL, 20 COMPONENTS SHALL BE EMPTY.
 WHEN THE TAPE WIDTH IS 44 TO 56mm, SPROCKET HOLES SHALL BE SET ON BOTH SIDES OF REEL AS SHOWN ON THIS DRAWING.

NO.	MATERIAL	FINISH, REMARKS	NO.	MATERIAL	FINISH, REMARKS
CL					

CODE NO. (OLD)	CL	DRAWN	DESIGNED	CHECKED	APPROVED	RELEASED

DRAWING NO.	PART NO.
EDC3-160309-19	DF14A-P-1.25H(56)

SCALE	UNITS	CODE NO.
FREE	mm	CL538-