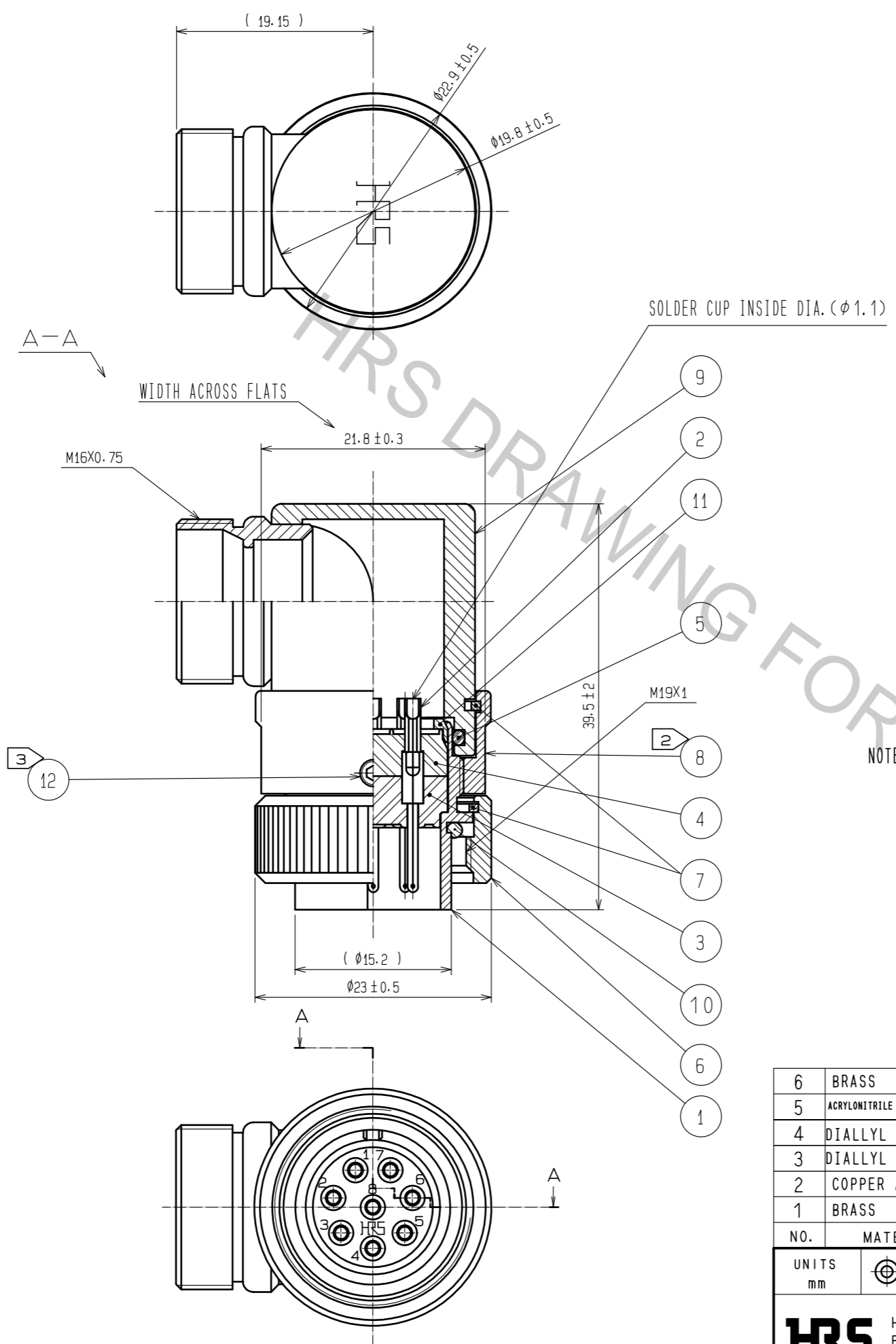


Aug.1.2018 Copyright 2018 HIROSE ELECTRIC CO., LTD. All Rights Reserved.  
 In case that the application demands a high level of reliability, such as automotive,  
 please contact a company representative for further information.



- NOTES
- ① ONE EXAMPLE OF THE ROTATION OF REF. NO. ⑧, ⑨ TO REF. NO. ① IS SHOWN.
  - ② THE RECOMMENDED CLAMP TORQUE, REF. NO. ⑧ : 3 TO 4 N · m.  
 LOCTITE 243, HENKEL JAPAN OR EQUIVALENT IS RECOMMENDED TO PREVENT REF. NO. ⑧ FOR LOOSENING.
  - ③ ACROSS FLATS HEXAGON HEAD OF REF. NO. ⑫ : 1.27  
 THE RECOMMENDED CLAMP TORQUE, REF. NO. ⑫ : 0.2 TO 0.3 N · m.  
 LOCTITE 243, HENKEL JAPAN OR EQUIVALENT IS RECOMMENDED TO PREVENT REF. NO. ⑫ FOR LOOSENING.
  - △4 THIS PRODUCTS TO BE USED WITH CABLE CLAMP, JR13WCC-※(32).  
 ※ DESIGNATE DIAMETER(mm) OF APPLICABLE CABLE.  
 THE CABLE PULL AND TWISTING STRENGTH AND OTHER CHARACTERISTICS MAY DIFFER.  
 DEPENDING ON THE CABLE STRUCTURE.  
 PLEASE CONFIRM BEFORE THE USE.

NO.	MATERIAL	FINISH . REMARKS	NO.	MATERIAL	FINISH . REMARKS
6	BRASS	NICKEL PLATING	12	STAINLESS STEEL	JISB1177 HEX SOKET SET SCREW M2.6×0.45×2
5	ACRYLONITRILE BUTADIENE RUBBER	(GRAY)	11	POLYACETAL	(WHITE)
4	DIALLYL PHTHALATE	(BLACK) UL94V-0	10	ACRYLONITRILE BUTADIENE RUBBER	(GRAY)
3	DIALLYL PHTHALATE	(BLACK) UL94V-0	9	BRASS	NICKEL PLATING
2	COPPER ALLOY	SILVER PLATING 2μm min. △	8	BRASS	NICKEL PLATING
1	BRASS	NICKEL PLATING	7	PHOSPHOR BRONZE	NICKEL PLATING

UNITS	SCALE	COUNT	DESCRIPTION OF REVISIONS	DESIGNED	CHECKED	DATE
mm	2 : 1	△ 2	DIS-C-00002212	HY. KISHI	HY. KOBAYASHI	18. 04. 17

APPROVED	CHECKED	DESIGNED	DRAWN	DRAWING NO.	PART NO.	CODE NO.
HY. KOBAYASHI	HY. KOBAYASHI	HY. KISHI	MK. INOUE	EDC-114570-31-00	RM15WTLP-8P(31)	CL109-1887-6-31
18. 02. 22	18. 02. 22	18. 02. 22	18. 02. 08			