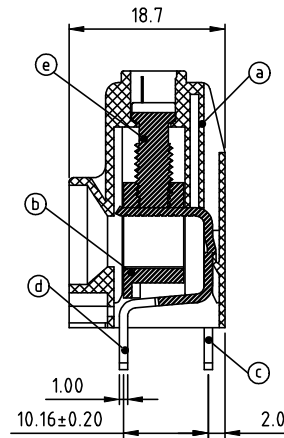
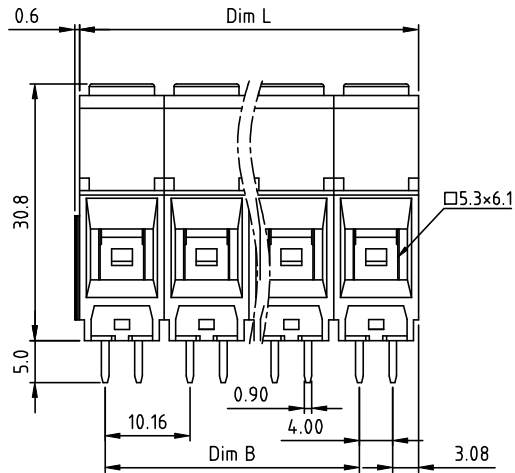
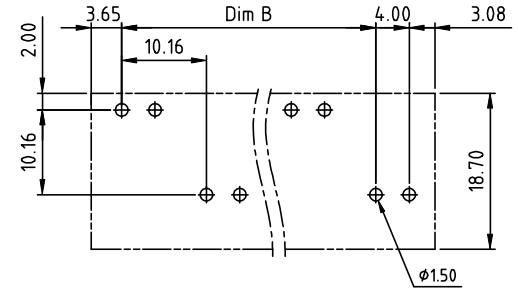
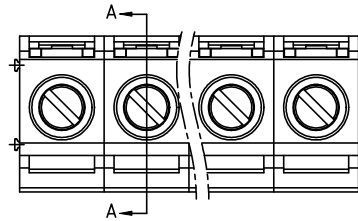




PRODUCT NUMBER	PITCH
KPxx21x000J0G	10.16 mm



RECOMMENDED P.C.B LAYOUT TOP VIEW

Material:

- ItemⒶ Terminal housing : Thermoplastic (UL 94V-0)
- ItemⒷ Clamp : Brass , Ni plated
- ItemⒸ Solder pin (Back single row) : Copper , Tin plated
- ItemⒹ Solder pin (Front single row) : Copper , Tin plated
- ItemⒺ Terminal screw: Steel Zinc plating"-slot type

Electrical cULs

- Voltage rating : 600V
- Current rating : 65A
- Wire range :
- Solid wire (AWG) : 6-20
- Stranded wire (AWG) : 6-20
- Torque (LB-In.) : 12.2
- Screw : M4.5
- Wire strip length : 10~11mm
- Withstanding voltage : 2.2KV
- Operating temperature : -40°C+115°C
- Soldering temperature : 260°C+5°C/5 Sec
- Safety Approval: cULs

A

A

N = Number of poles
 Dim L=Nx10.16
 Dim B=(N-1)x10.16

Poles	Tolerance
2P/4P	±0.20
6P/8P	±0.30
10P/12P	±0.40

PART NO.: KP xx 2 1 x 0 00J0 G

End Stackable
 No. of poles
 02 2 poles
 04 4 poles

 12 12 poles

Body Color
 0 Black (RAL9005)
 2 Red (RAL3001/D)
 3 Orange(RAL2011/P)
 4 Yellow(RAL1018/A)
 5 Green(RAL6018/T)
 6 Blue (RAL5015/A)
 8 Grey(RAL7035/D)
 9 White(RAL1102)
 C Green(RAL6018/U)

RoHS compliant
 (lead<4%)
 In copper Alloy

mat'l. code				surface ASME Y14.5		tolerance ASME Y14.5		projection		product family	
ltr ecn no dr date				tolerances unless otherwise specified		angles		MM		TERMINAL BLOCK	
				X±1		X.±0.5		scale		title	
				X.X±0.3		X.XX±0.1		RISING CLAMP,100D WIRE INLET,DOUBLE INTERLACE TAIL,EVEN POLES		TERMINAL BLOCK	
				dr EVIN ZHONG 041414		enr EVIN ZHONG 041414		FCI		sheet 1 of 2 size	
				chr HANKE FENG 041414		appd SHI JUN 041414		scale		KPxx21x000J0G A4	
				sheet		revision		type		CUSTOMER Drawing	
index				sheet		A					
				1							

B

B



Copyright FCI.



FCIconnect.com



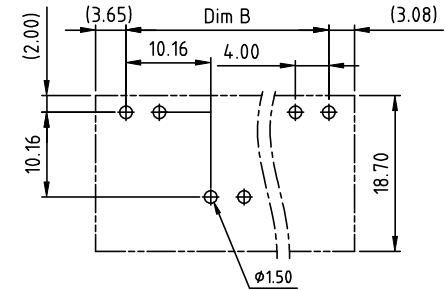
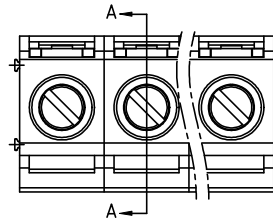
1

2

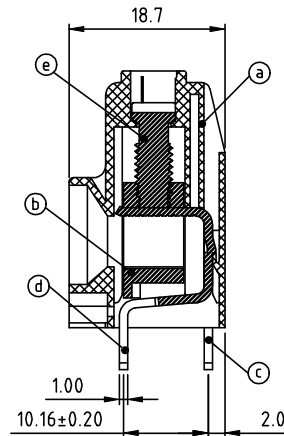
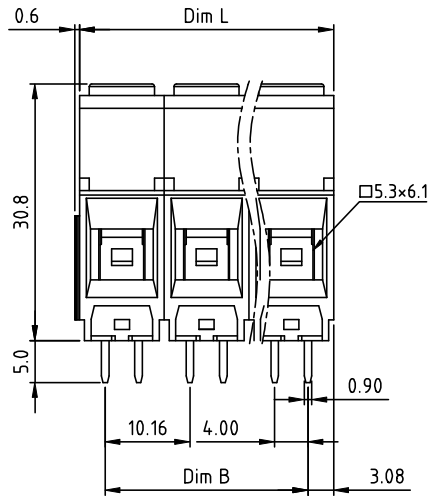
3

4

PRODUCT NUMBER	PITCH
KPxx21x000J0G	10.16 mm



RECOMMENDED P.C.B LAYOUT
TOP VIEW



SECTION A-A

Material:

- Item ① Terminal housing : Thermoplastic (UL 94V-0)
- Item ② Clamp : Brass , Ni plated
- Item ③ Solder pin (Back single row) : Copper , Tin plated
- Item ④ Solder pin (Front single row) : Copper , Tin plated
- Item ⑤ Terminal screw: Steel Zinc plating"-slot type

Electrical cULs

- Voltage rating : 600V
- Current rating : 65A
- Wire range :
- Solid wire (AWG) : 6-20
- Stranded wire (AWG) : 6-20
- Torque (LB-In.) : 12.2
- Screw : M4.5
- Wire strip length : 10 ~ 11mm
- Withstanding voltage : 2.2KV
- Operating temperature : -40°C+115°C
- Soldering temperature : 260°C+5°C/5 Sec
- Safety Approval: US

A

A

N = Number of poles
 Dim L=Nx10.16
 Dim B=(N-1)x10.16

Poles	Tolerance
3P	±0.20
5P/7P	±0.30
9P/11P	±0.40

PART NO.: KP xx 2 1 x 0 00J0 G

End Stackable
 No. of poles
 03 3 poles
 05 5 poles

 11 11 poles

Body Color
 0 Black (RAL9005)
 2 Red (RAL3001/D)
 3 Orange(RAL2011/P)
 4 Yellow(RAL1018/A)
 5 Green(RAL6018/T)
 6 Blue (RAL5015/A)
 8 Grey(RAL7035/D)
 9 White(RAL1102)
 C Green(RAL6018/U)

RoHS compliant
 (lead<4%)
 In copper Alloy

mat'l. code		surface ASME Y14.5	tolerance ASME Y14.5	projection 	product family TERMINAL BLOCK
ltr	ecn no	dr	date	title TERMINAL BLOCK	
tolerances unless otherwise specified				MM	RISING CLAMP,180D WIRE INLET,DOUBLE INTERLACE TAIL,0DD POLES
angles	X.±0.5		scale		
flat	X.X±0.3		dwg no		
X'±1'	X.XX±0.1		sheet 2 of 2 size		
dr	EVIN ZHONG	041414	KPxx21x000J0G		
enr	EVIN ZHONG	041414	A4		
chr	HANKE FENG	041414	type		
appd	SHI JUN	041414	CUSTOMER Drawing		
sheet index	revision sheet	A	2		

B

B