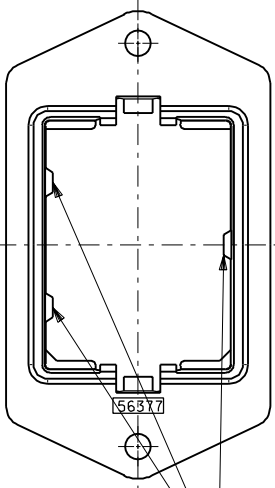
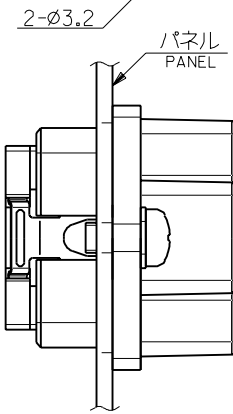
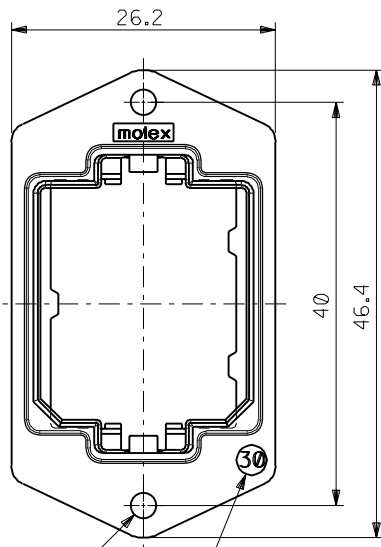
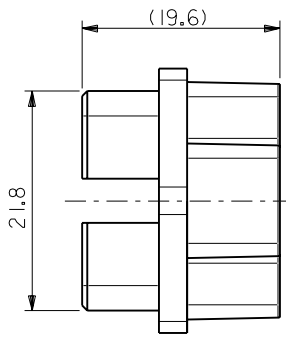
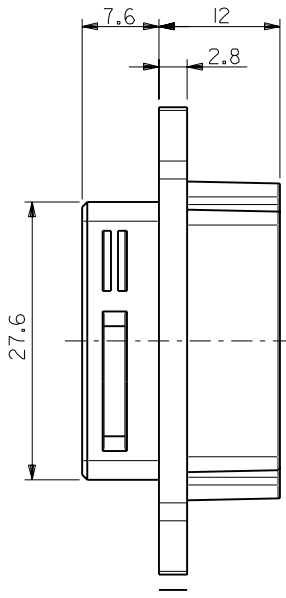


DWG. NO.  
SD-56377-006

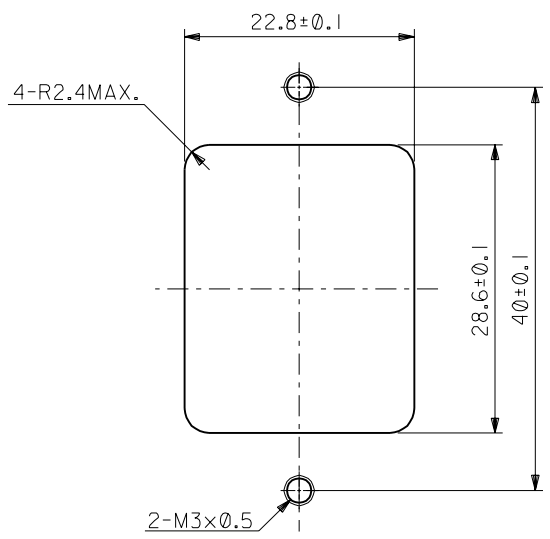


ハウジング挿入方向キー  
POLARIZATIONS KEY FOR HOUSING



パネル前面取り付け  
FRONT MOUNT TYPE

SIZE IDENTIFICATION



推奨パネル切り取り寸法 (前面取り付け)  
RECOMMENDED PANEL OPENING (FRONT MOUNTING)

注記  
NOTES

- 材質  
MATERIAL  
亜鉛合金、ニッケルメッキ  
ZINC ALLOY, NI PLATING
- 適用ハウジングアッセンブリ : 51233-301\* (PIN HS'G ASS'Y)  
51238-301\* (SOCKET HS'G ASS'Y)  
APPLICABLE HOUSING ASS'Y : 51233-301\* (PIN HS'G ASS'Y)  
51238-301\* (SOCKET HS'G ASS'Y)
- 推奨ねじ締め付けトルク : 5~6 kgf・cm  
RECOMMENDED SCREW TIGHTENING TORQUE : 5~6 kgf・cm

56377-3000 56377-\*\*\*\*

MATERIAL.NO MODEL.NO

DIMENSIONS:  mm  INCH  mm ONLY SHT REV  
REVISION ON CAD ONLY

TITLE: COMPACT ROBOT CONN. (CRC) RECEPTACLE SHELL

MOLEX MOLEX INCORPORATED

MATERIAL NO. DRAWING NO. SHEET NO.  
SEE CHART SD-56377-006 1 OF 1

THIS DRAWING CONTAINS INFORMATION THAT IS PROPRIETARY TO MOLEX INCORPORATED AND SHOULD NOT BE USED WITHOUT WRITTEN PERMISSION. SIZE B

DO NOT SCALE DRAWING

EC NO. DRWN: CHK: APPR:	EC NO. DRWN: CHK: APPR:	EC NO. DRWN: CHK: APPR:	REVISED 01/10/17 EC NO. J2002-0932 DRWN: S.AKIYAMA CHK: J.MIYAZAWA APPR: YO.IITO	RELEASED 01/02/09 EC NO. JD2001-1040 DRWN: S.AKIYAMA CHK: J.MIYAZAWA APPR: H.IKESUGI	MATERIAL 材料	注記参照 SEE NOTES	GENERAL TOLERANCES: (UNLESS SPECIFIED) 一般公差	SCALE 2-1	DESIGN UNITS <input checked="" type="checkbox"/> mm <input type="checkbox"/> INCH	THIRD ANGLE PROJECTION
					FINISH 仕上げ	#	10 UNDER 未満	±0.2	DRAWN BY & DATE S. Akiyama 1/01/25	TITLE:
					WIRE RANGE 適用線径範囲	#	10 OVER 30 UNDER 以上 未満	±0.25	CHECKED BY & DATE J. Miyazawa / Y. Ito	
					INS. RANGE 被覆外径	#	30 OVER 以上	±0.3	APPROVED BY & DATE S. Akiyama	
					REV		ANGLE 角度	±3°	CAD FILE NAME 56377006.S01	