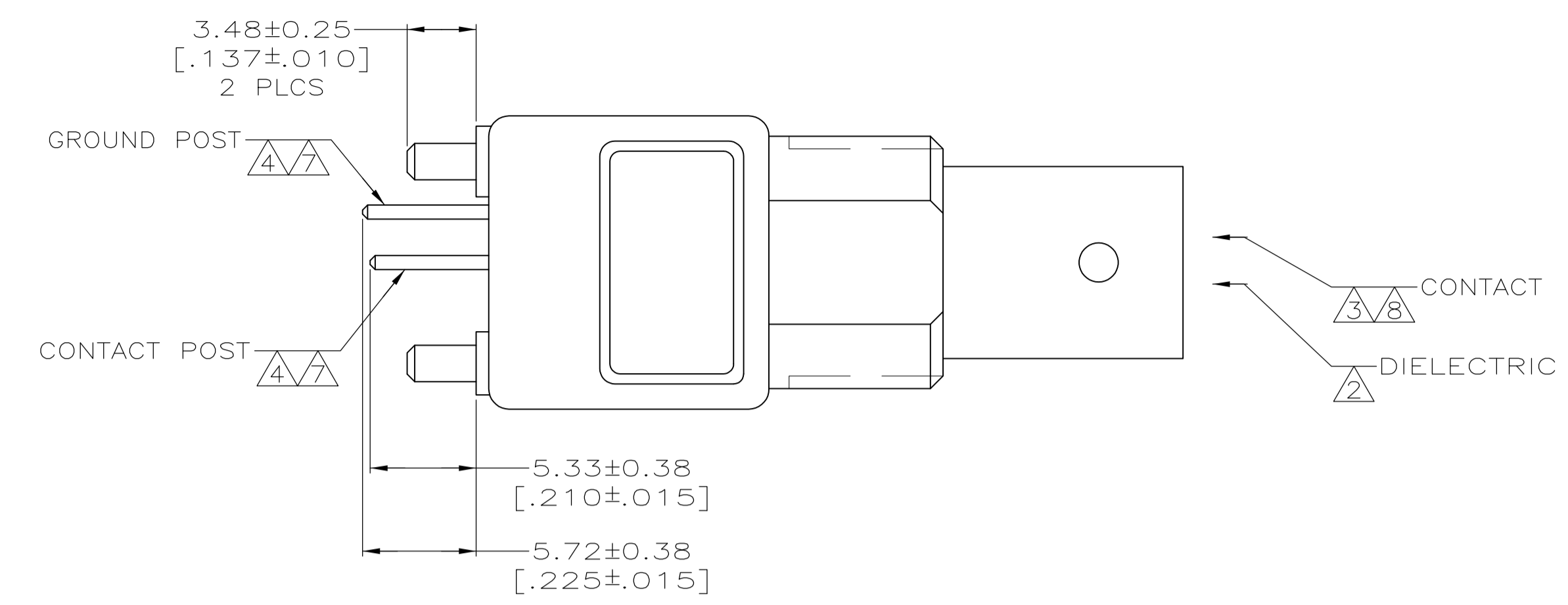
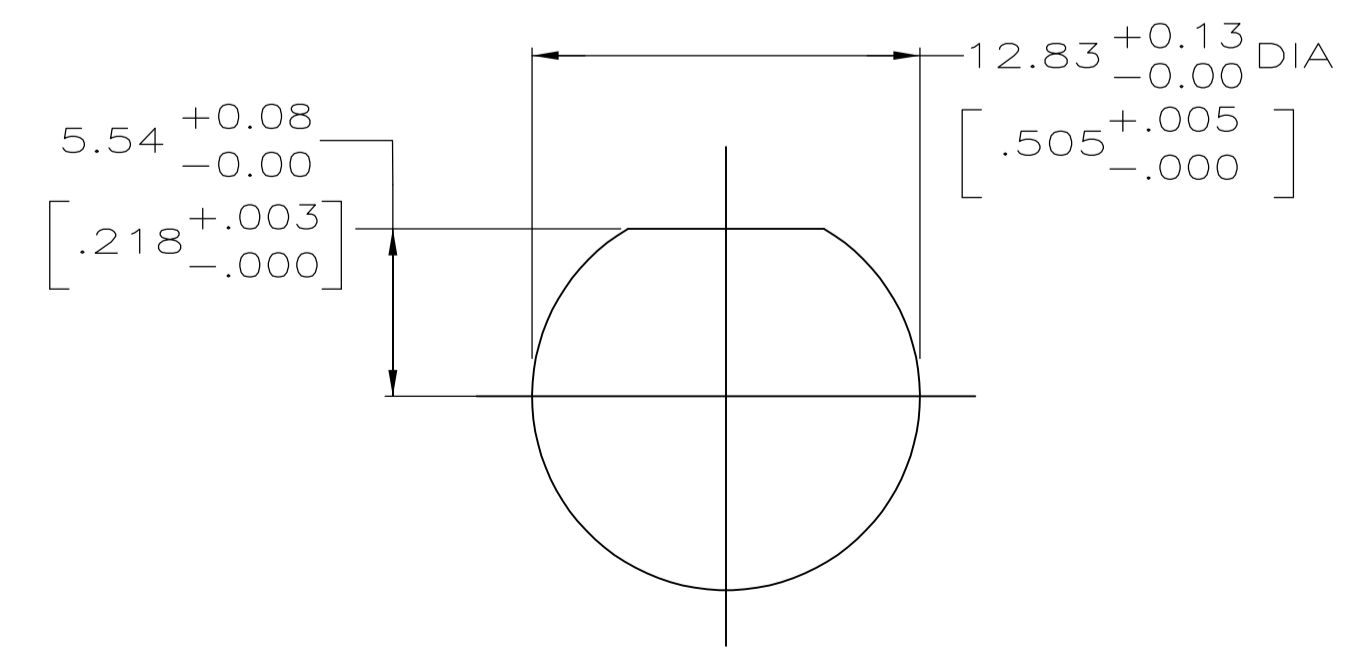
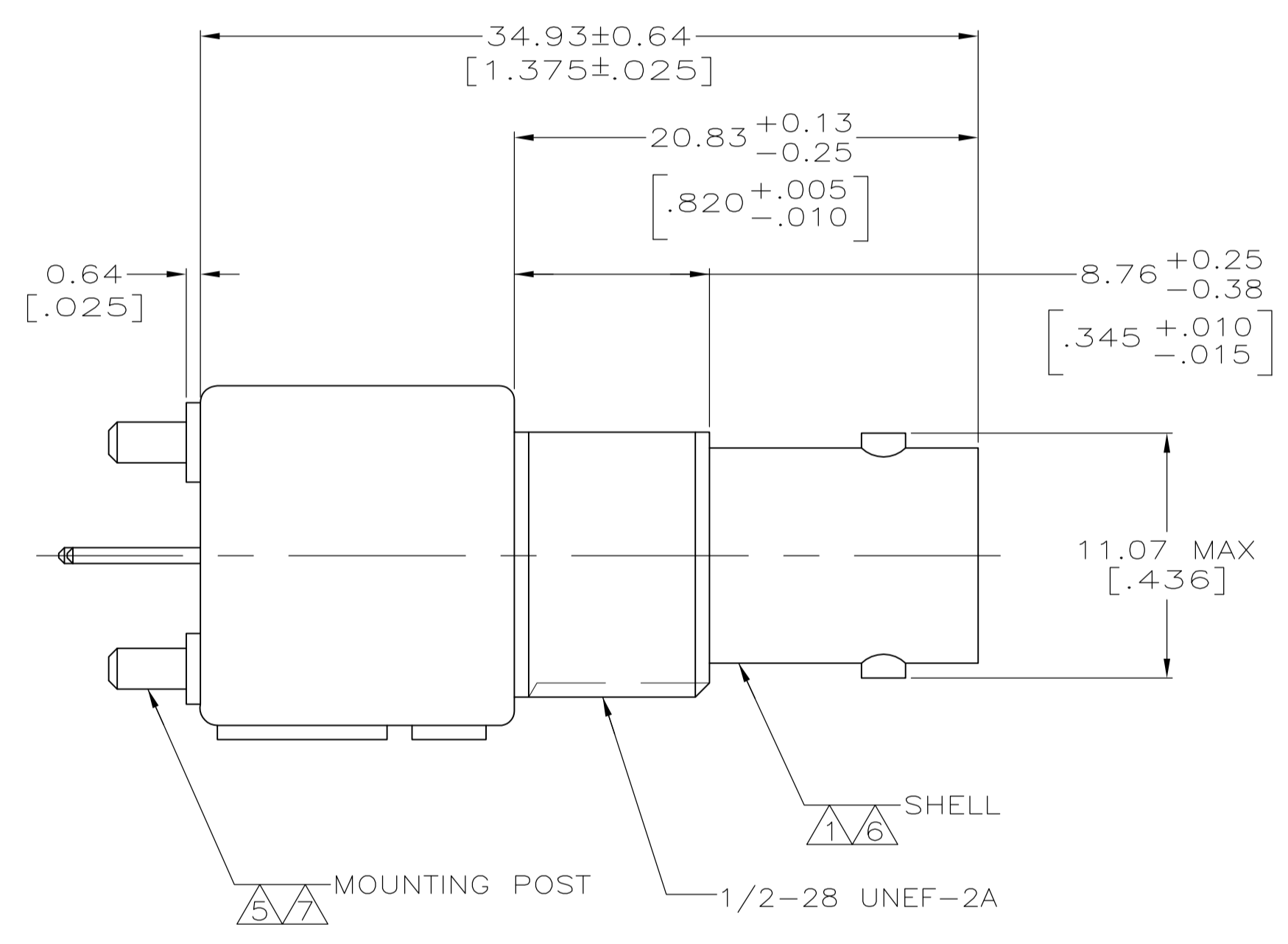
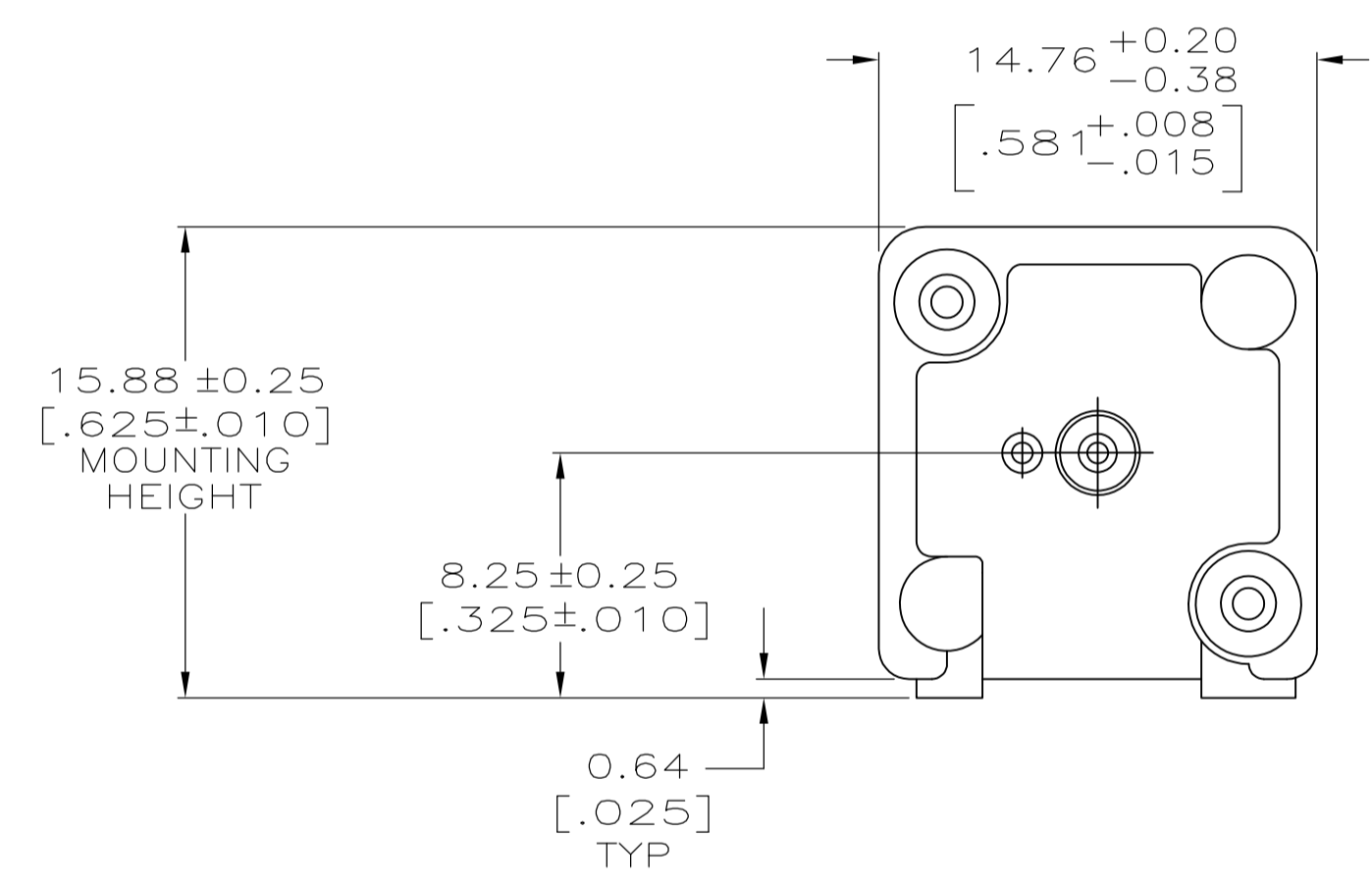


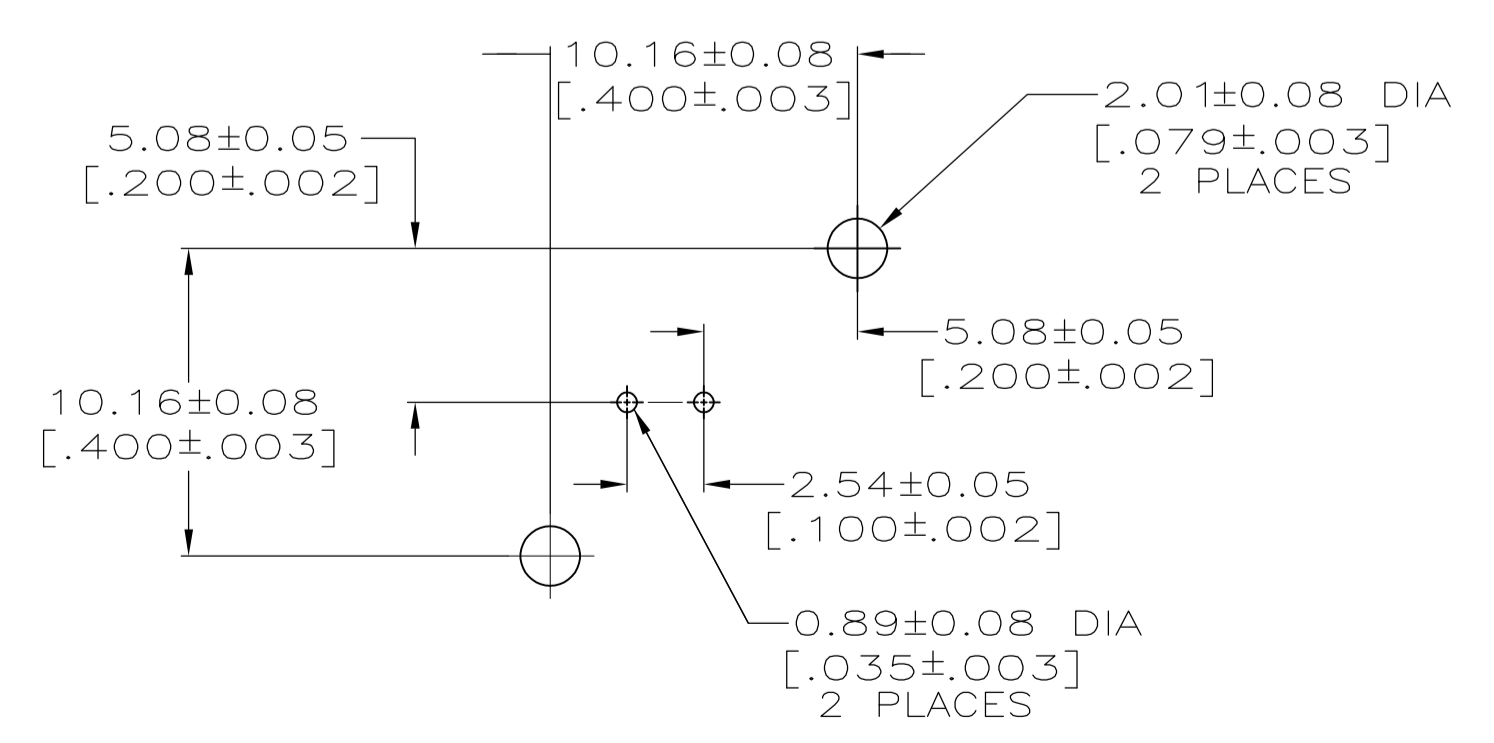
LOC	DIST	REVISIONS			
P	LTR	DESCRIPTION	DATE	DN	APVD
AJ	16	A1	REVISED PER ECO-11-005030	11MAR11	RK HMR



- 1 ZINC PER QQ-Z-363.
- 2 POLYMETHYLPENTENE, GENERAL PURPOSE.
- 3 BERYLLIUM COPPER PER QQ-C-530.
- 4 BRASS PER ASTM-B-453.
- 5 BRASS PER ASTM-B-16.
- 6 NICKEL PLATE PER QQ-N-290, 3.81 μm [.000150] MINIMUM THICK.
- 7 TIN PLATE PER ASTM-B-545, 3.81 μm [.000150] MINIMUM THICK.
- 8 GOLD PLATE PER MIL-G-45204, 0.76 μm [.000030] MINIMUM THICK.
- 9. SEE INSTRUCTION SHEET 408-2769.



RECOMMENDED PANEL CUTOUT



PCB CONFIGURATION

5222132-1  
PART NUMBER

THIS DRAWING IS A CONTROLLED DOCUMENT.		DN J. ALCORTA - 21APR2005	TE Connectivity	
DIMENSIONS: mm (INCHES)		CHK J. HAVENER - 21APR2005	NAME	
TOLERANCES UNLESS OTHERWISE SPECIFIED:		APVD J. LIPPERT - 21APR2005	PRODUCT SPEC	
0 PLC ± -		APPLICATION SPEC		
1 PLC ± -		SIZE		
2 PLC ± 0.20 [.008]		CAGE CODE		
3 PLC ± -		DRAWING NO		
4 PLC ± -		RESTRICTED TO		
ANGLES ± -		WEIGHT		
MATERIAL SEE NOTES 1-5		FINISH SEE NOTES 6-8		
CUSTOMER DRAWING		SCALE 4:1 SHEET 1 OF 1 REV A1		