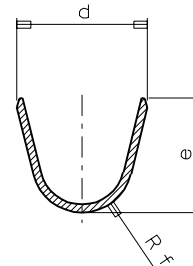
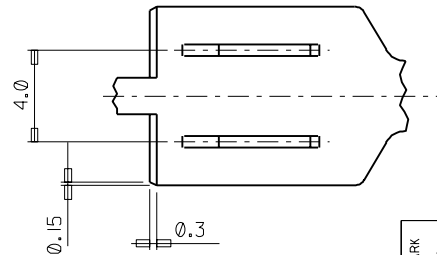
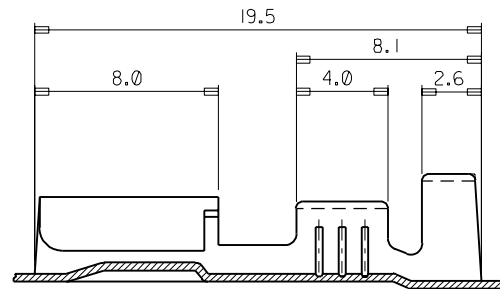


SECTION A-A



SECTION B-B



PART NO.	a	b	Rc	d	e	Rf	WIRE RANGE (mmSQ)	Q'TY/REEL	FINISH	REMARK (OPTION)
35427-9700									UNPLATED	---
-9702	S	2.8	2.8	0.9	3.8	3.8	0.3 ± 0.5	5000	PLATED	---
-9710									UNPLATED	MARK "H"
35427-9800									UNPLATED	---
-9802	M	3.0	3.5	1.2	5.0	5.0	0.85 ± 1.25	5000	PLATED	---
-9810									UNPLATED	MARK "H"
35427-9900									UNPLATED	---
-9902	L	5.2	4.6	2.0	6.3	6.3	2.0 ± 3.0	4000	PLATED	---
-9910									UNPLATED	MARK "H"

NOTES

1. MATERIAL : BRASS (C2600), THICK = 0.35mm

2. TENSION (35427-970*,980*,990*)

- INSERTION FORCE(INITIAL) : 1.0 ± 1.5 Kgf

- WITHDRAWAL FORCE(6 TIMES) : 0.6Kgf MIN.

△ TENSION (35427-971*,981*,991*) "H" MARK

- INSERTION FORCE(INITIAL) : 1.5 ± 2.0 Kgf

- WITHDRAWAL FORCE(6 TIMES) : 0.8Kgf MIN.

REV	DESCRIPTION	QUALITY SYMBOLS	GENERAL TOLERANCES: (UNLESS SPECIFIED)		SCALE 5:1	DESIGN UNITS <input checked="" type="checkbox"/> mm <input type="checkbox"/> INCH	THIRD ANGLE PROJECTION	DIMENSIONS:			SHT	REV
			mm	INCH				<input type="checkbox"/> mm <input type="checkbox"/> INCH	<input checked="" type="checkbox"/> mm <input type="checkbox"/> ONLY	REVISE ON CAD ONLY		
	ADDED TENSION & MARK EC NO. KOR2000-0068 DRWN: B.C.YOON 00/10/25 CHK: B.K.CHOI 00/10/25 APPR: C.W.LEE 00/10/25	MAJOR △ = 0 CRITICAL ▽ = 0	4 PLACES	±0.	±.	DRAWN BY & DATE J.K.OH 96/10/11	TITLE: POWERMATE FEMALE TERMINAL (S,M,L)					
		3 PLACES	±0.	±.	CHECKED BY & DATE B.K.CHOI 96/10/11							
			2 PLACES	±0	±.	APPROVED BY & DATE C.W.LEE 96/10/11	MATERIAL NO. 35427-9***	DRAWING NO. SD-35427-002	SHEET NO. 1 OF 1	SIZE B		
			1 PLACE	±0.3	±.	CAD FILENAME sd35427.dgn	THIS DRAWING CONTAINS INFORMATION THAT IS PROPRIETARY TO MOLEX INCORPORATED AND SHOULD NOT BE USED WITHOUT WRITTEN PERMISSION.					
			ANGULAR: ± 3 °			DRAFT WHERE APPLICABLE MUST REMAIN WITHIN DIMENSIONS						