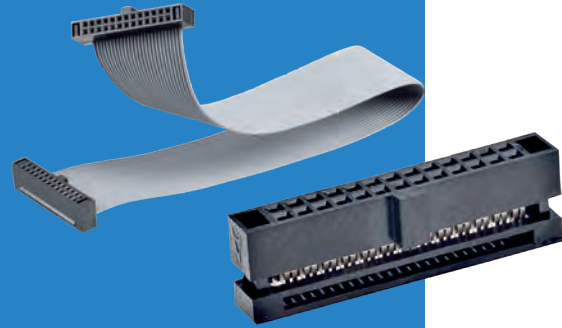


Archer Connectors – M50 IDC

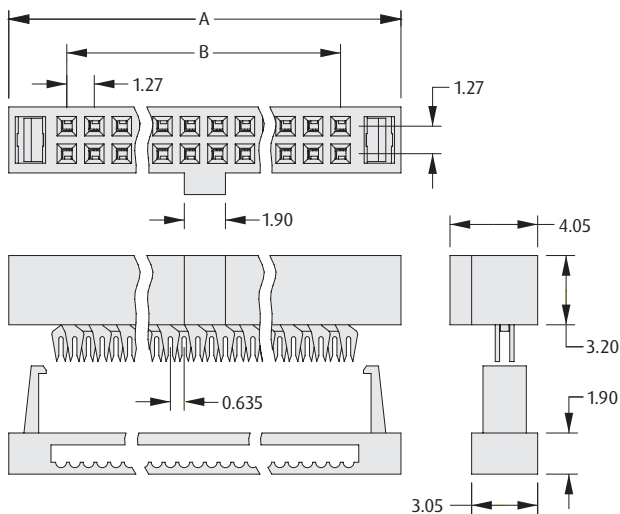
Female Cable Connector & Cable Assembly

- ❖ Suitable for use with male vertical latching connectors shown on the following page.
- ❖ IDC connection for fast termination of multiple contacts.
- ❖ Polarised to prevent mis-mating.
- ❖ Secure cable retention with positive latching to header.
- ❖ Standard cable assembly lengths from stock.
- ❖ Instruction sheet for Hand Tool is available at www.harwin.com/instructions.



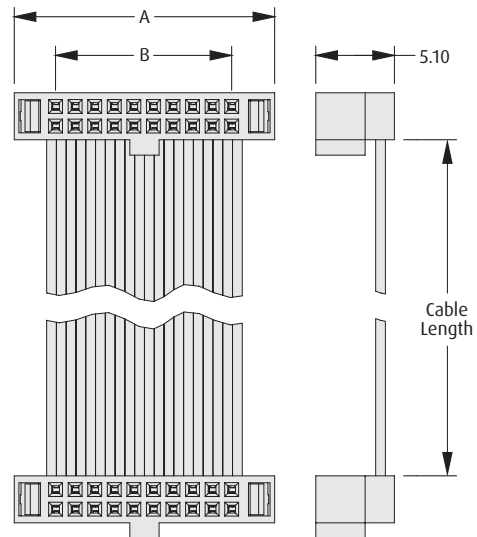
1.27mm (.050") PITCH

FEMALE IDC



FEMALE-TO-FEMALE CABLE

- ❖ Uses 0.635mm pitch 30 AWG Ribbon cable to UL2678.
- ❖ Constructed with Contact 1 attached to Contact 1, Contact 2 to Contact 2, etc.



HAND TOOL



ORDER CODE
Z50-020

CALCULATION

A	$B + 5.47$
B	$1.27 \times (\text{No. of contacts per row} - 1)$

HOW TO ORDER

M50 - XXX XX 42

SERIES CODE

TYPE

330	Female IDC Connector
910	150mm Cable Assembly
911	300mm Cable Assembly

FINISH

42	Gold + Tin
-----------	------------

NO. OF CONTACTS PER ROW

05, 10, 13, 17, 20, 25	All
06, 07, 08	M50-330 only

All dimensions in mm.