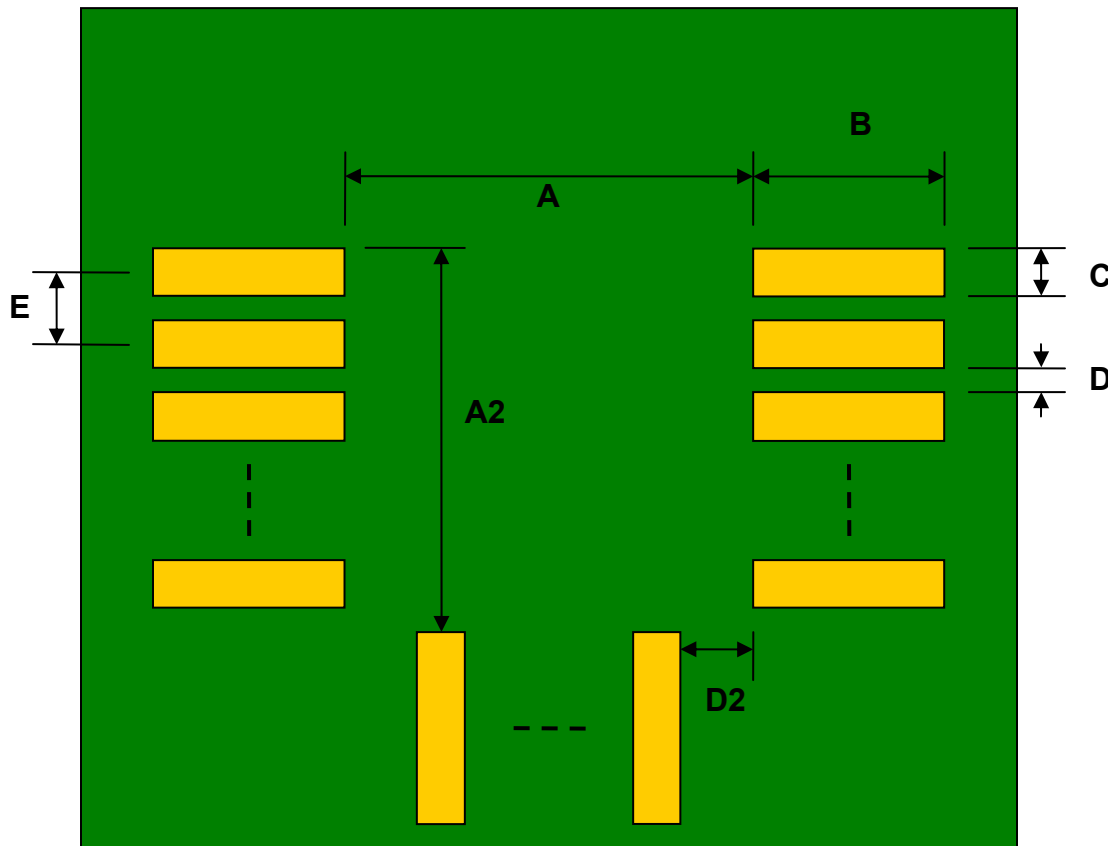


## RN4020 to DIP-24 SMT Adapter (1.2 mm pitch, 19.5 x 11.5 mm body)

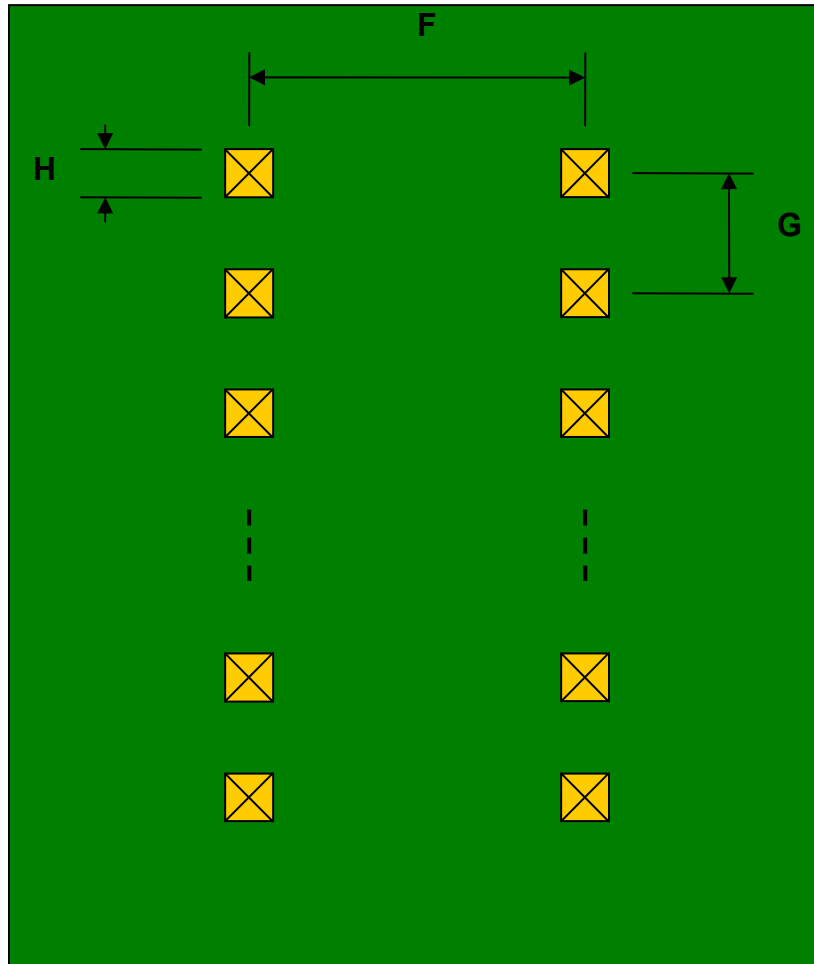
REF.	DIMENSIONS					
	mm			inches		
	MIN.	TYP.	MAX.	MIN.	TYP.	MAX.
A		9.50				
A2		10.30				
B		1.50				
C		0.80				
D		0.40				
D2		1.35				
E		1.20				
F					0.600	
G					0.100	
H					0.025	

Top View (SMT Footprint)



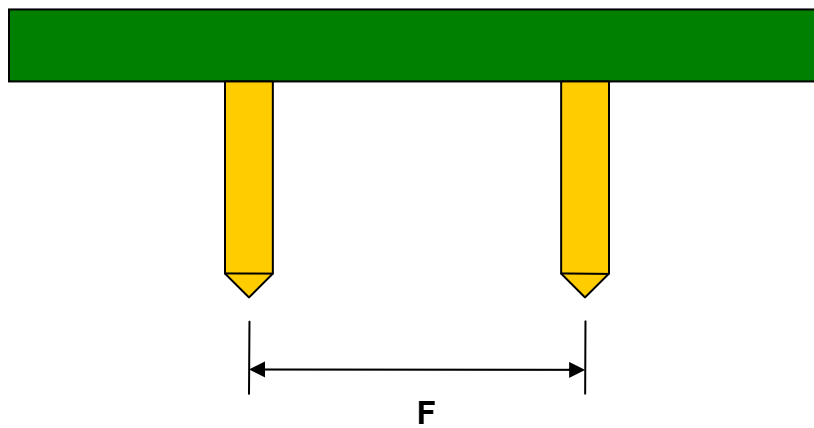
(Representative drawing only - not to scale)

### Bottom View (DIP Pins)



(Representative drawing only - not to scale)

### Side View (DIP Pins)



(Representative drawing only - not to scale)